

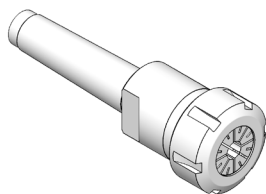
# INDICE DELL'ATTACCO CONO MORSE - DIN 228

INDEX OF DIN 228 - MORSE TAPER SHANK

## PORTAPINZA ER

**DIN 6499**

ER-DIN 6499 COLLET CHUCKS



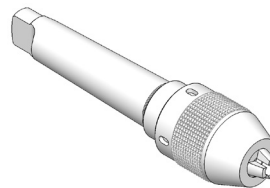
Programma completo da pag.

**50**

## AUTOSERRANTI

**INTEGRALI**

MONOLITHIC DRILL CHUCKS



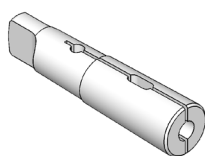
Programma completo a pag.

**54**

## PINZE CONO MORSE

**DIN 6329 E DIN 6328**

MORSE TAPER COLLETS  
DIN 6329 AND DIN 6328



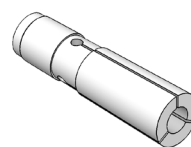
Programma completo a pag.

**55**

## PINZE CONO MORSE

**CON FILETTO**

THREADED  
MORSE TAPER COLLETS

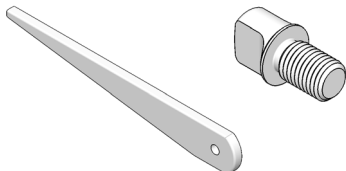


Programma completo a pag.

**55**

## CACCIACONI E TENONI

CONE EJECTORS AND TONQUES

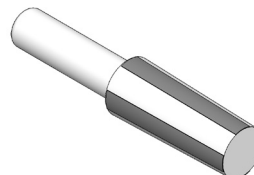


Programma completo da pag.

**54**

## TAMPONI PULITORI

MORSE TAPER CLEANERS



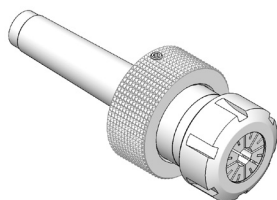
Programma completo a pag.

**63**

## PORTA ALESATORI

**OSCILLANTI**

FLOATING REAMER HOLDERS

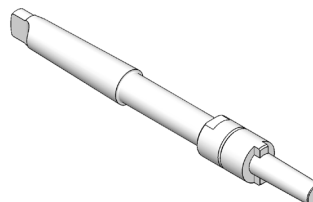


Programma completo a pag.

**56**

## PORTA ALESATORI A MANICOTTO CON ESTRATTORE

SHELL REAMER HOLDERS  
WITH EJECTOR

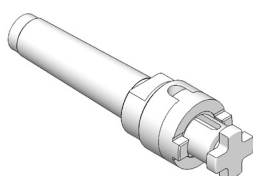


Programma completo a pag.

**56**

## PORTAFRESE COMBINATI

DIN 6358 SHELL END  
MILL HOLDERS

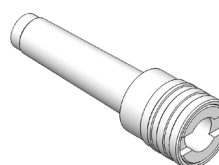


Programma completo a pag.

**57**

## MASCHIATORI A CAMBIO RAPIDO

QUICK CHANGE TAP HOLDERS



Programma completo da pag.

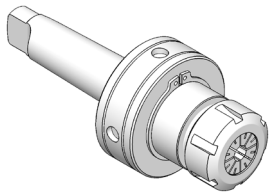
**58**

# INDICE DELL'ATTACCO CONO MORSE - DIN 228

INDEX OF DIN 228 - MORSE TAPER SHANK

## PROGRAMMA tipo "FAMUP RAG"

"FAMUP RAG" type PROGRAM

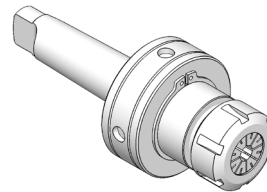


Programma  
completo  
a pag.

**60**

## PROGRAMMA tipo "BIMAK"

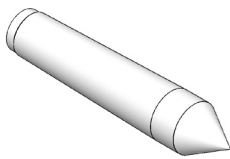
"BIMAK" type PROGRAM



Programma  
completo  
a pag.

**61**

## CONTROPUNTE FISSE FIXED TAILSTOCKS

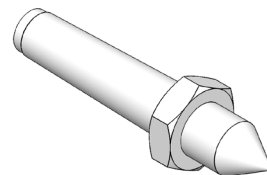


Programma  
completo  
a pag.

**62**

## CONTROPUNTE FISSE CON ESTRATTORE

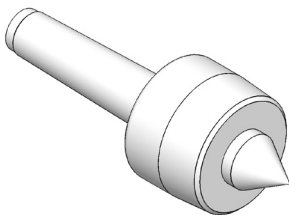
FIXED TAILSTOCKS WITH EXTRACTOR



Programma  
completo  
a pag.

**63**

## CONTROPUNTE ROTANTI ROTARY TAILSTOCKS

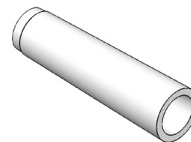


Programma  
completo  
a pag.

**64**

## RIDUZIONI A CONO MORSE PASSANTI

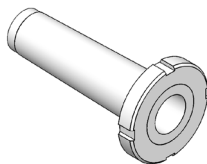
PASSER-BY MORSE TAPER ADAPTERS



Programma  
completo  
a pag.

**65**

## RIDUZIONI A CONO MORSE PASSANTI CON ESTRATTORE PASSER-BY MORSE TAPER ADAPTERS WITH EXTRACTOR

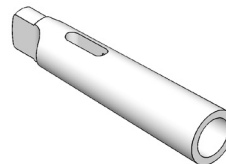


Programma  
completo  
a pag.

**65**

## RIDUZIONI A CONO MORSE DIN 2185

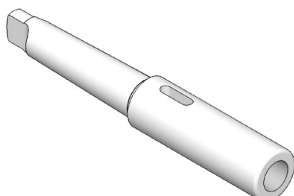
DIN 2185 MORSE TAPER ADAPTERS



Programma  
completo  
a pag.

**66**

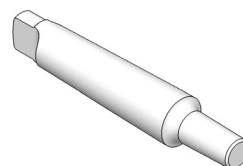
## RIDUZIONI A CONO MORSE PROLUNGATE DIN 2187 EXTENDED DIN 2185 MORSE TAPER ADAPTERS



Programma  
completo  
da pag.

**66**

## RIDUZIONI CONO MORSE PER DIN 238 MORSE TAPER ADAPTERS TO DIN 238

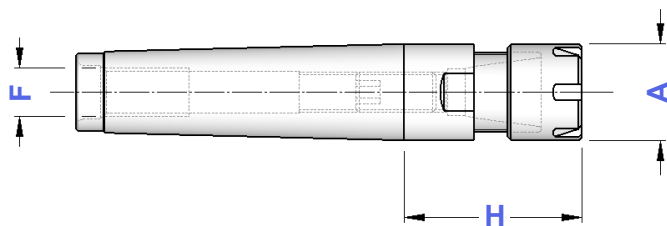






Programma  
completo  
a pag.

**67**

**DIN  
228-A****PORTAPINZE ER - GHIERA MINI  
CON FILETTO**

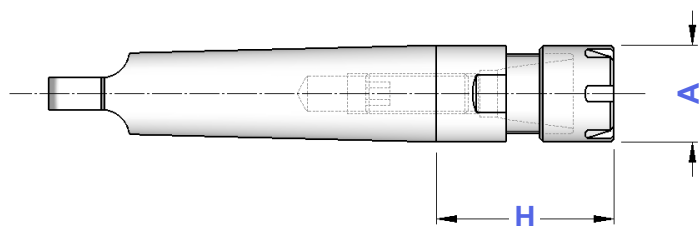
ER - DIN 6499 COLLET CHUCKS WITH THREAD - MINI NUT







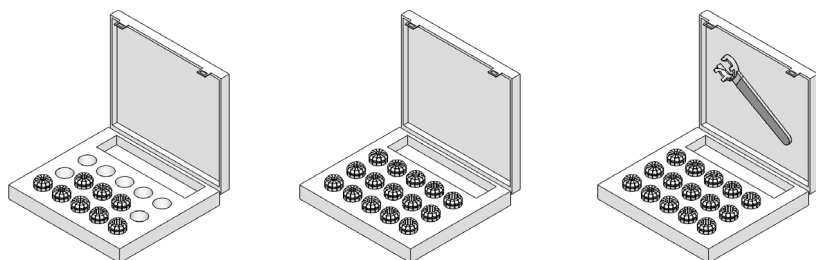
TIPO	Art.	H	A	F	CAPACITA'				
CM 1 A - ER 11 GM	<b>3509</b>	25	16	M 6	1 ÷ 7	0181	0432	5718	5573
CM 1 A - ER 16 GM	<b>3510</b>	40	22	M 6	1 ÷ 10	0181	1229	5719	0364
CM 2 A - ER 16 GM	<b>3511</b>	42	22	M10	1 ÷ 10	0186	1229	5719	0364
CM 2 A - ER 20 GM	<b>3512</b>	50	28	M10	1 ÷ 13	0186	1230	5720	0787
CM 2 A - ER 25 GM	<b>3513</b>	54	35	M10	1 ÷ 16	0186	1231	5721	0996
CM 3 A - ER 16 GM	<b>3516</b>	43	22	M12	1 ÷ 10	0186	1229	5719	0364
CM 3 A - ER 20 GM	<b>3517</b>	47	28	M12	1 ÷ 13	0188	1230	5720	0787
CM 3 A - ER 25 GM	<b>3518</b>	58	35	M12	1 ÷ 16	0188	1231	5721	0996

**DIN  
228-B****PORTAPINZE ER - GHIERA MINI  
CON TENONE**

ER - DIN 6499 COLLET CHUCKS WITH TONQUE - MINI NUT



TIPO	Art.	H	A	CAPACITA'				
CM 1 - ER 11 GM	<b>8613</b>	25	16	1 ÷ 7	0181	0432	5718	5573
CM 1 - ER 16 GM	<b>8614</b>	40	22	1 ÷ 10	0181	1229	5719	0364
CM 2 - ER 16 GM	<b>8615</b>	42	22	1 ÷ 10	0186	1229	5719	0364
CM 2 - ER 20 GM	<b>8616</b>	50	28	1 ÷ 13	0186	1230	5720	0787
CM 2 - ER 25 GM	<b>8617</b>	54	35	1 ÷ 16	0186	1231	5721	0996
CM 3 - ER 16 GM	<b>8618</b>	43	22	1 ÷ 10	0186	1229	5719	0364
CM 3 - ER 20 GM	<b>8619</b>	47	28	1 ÷ 13	0188	1230	5720	0787
CM 3 - ER 25 GM	<b>8620</b>	58	35	1 ÷ 16	0188	1231	5721	0996

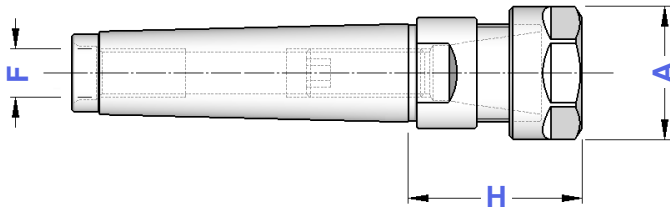






Con le composizioni che trovate da pagina 9 a pagina 19 del Catalogo Generale, è possibile realizzare la cassetta KIT di vostro interesse

With sets you find on General Catalogue from page 9 to page 19 it becomes easy to realize KIT cases that meet your needs.

**DIN  
228-A**

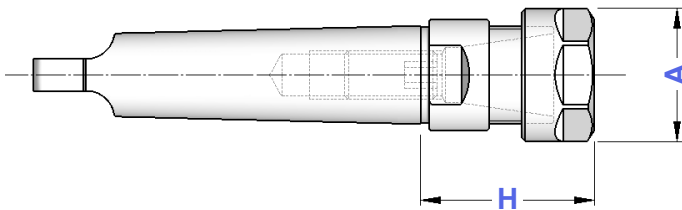
**PORTAPINZE ER - GHIERA ESAGONALE  
CON FILETTO**  
ER - DIN 6499 COLLET CHUCKS WITH THREAD - HEXAGONAL NUT







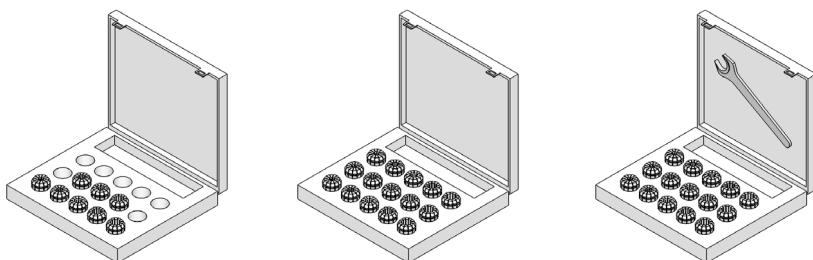
TIPO	Art.	H	A	F	CAPACITA'				
CM 1 A - ER16 GE	<b>8621</b>	40	28	M 6	1 ÷ 10	0181	1214	2906	0364
CM 2 A - ER16 GE	<b>8622</b>	42	28	M10	1 ÷ 10	0186	1214	2906	0364
CM 2 A - ER20 GE	<b>8623</b>	50	34	M10	1 ÷ 13	0186	1215	2907	0787

**DIN  
228-B**

**PORTAPINZE ER - GHIERA ESAGONALE  
CON TENONE**  
ER - DIN 6499 COLLET CHUCKS WITH TONQUE - HEXAGONAL NUT



TIPO	Art.	H	A	CAPACITA'				
CM 1 - ER 16 GE	<b>8624</b>	40	28	1 ÷ 10	0181	1214	2906	0364
CM 2 - ER 16 GE	<b>8625</b>	42	28	1 ÷ 10	0186	1214	2906	0364
CM 2 - ER 20 GE	<b>8626</b>	50	34	1 ÷ 13	0186	1215	2907	0787



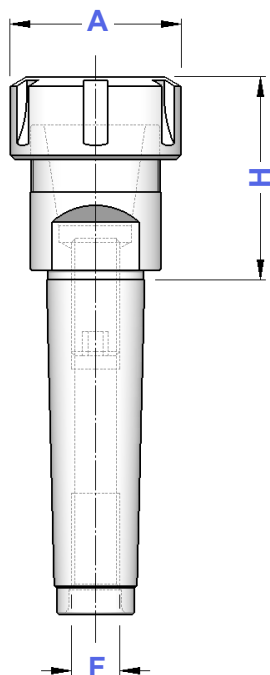
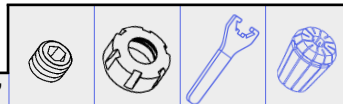
Con le composizioni che trovate da pagina 9 a pagina 19 del Catalogo Generale, è possibile realizzare la cassetta KIT di vostro interesse

With sets you find on General Catalogue from page 9 to page 19 it becomes easy to realize KIT cases that meet your needs.

# DIN 228-A

## PORTAPINZE ER - GHIERA STANDARD CON FILETTO

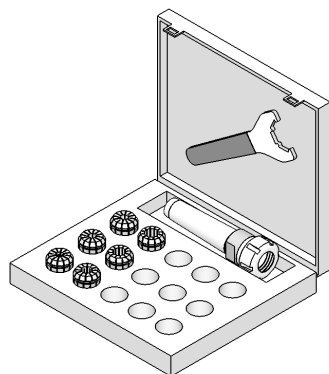
ER - DIN 6499 COLLET CHUCKS WITH THREAD - STANDARD NUT



TIPO	Art.	H	A	F	CAPACITA'				
CM 1 A - ER 16	<b>2915</b>	40	32	M 6	1 ÷ 10	0181	4993	3698	0364
CM 2 A - ER 16	<b>2916</b>	42	32	M10	1 ÷ 10	0186	4993	3698	0364
CM 2 A - ER 20	<b>2917</b>	50	35	M10	1 ÷ 13	0186	4994	3699	0787
CM 2 A - ER 25	<b>2918</b>	54	42	M10	1 ÷ 16	0186	4995	3669	0996
CM 2 A - ER 32	<b>3310</b>	59	50	M10	2 ÷ 20	0186	4996	3670	0988
CM 3 A - ER 25	<b>2919</b>	53	42	M12	1 ÷ 16	0188	4995	3669	0996
CM 3 A - ER 32	<b>2920</b>	70	50	M12	2 ÷ 20	0188	4996	3670	0988
CM 3 A - ER 40	<b>2921</b>	80	63	M12	3 ÷ 30	0188	4997	3671	0821
CM 4 A - ER 32	<b>2922</b>	60	50	M16	2 ÷ 20	0190	4996	3670	0988
CM 4 A - ER 40	<b>2923</b>	81	63	M16	3 ÷ 30	0190	4997	3671	0821
CM 4 A - ER 50	<b>2924</b>	96	78	M16	6 ÷ 34	0190	4998	3668	4055
CM 5 A - ER 32	<b>2902</b>	50	50	M20	2 ÷ 20	0191	4996	3670	0988
CM 5 A - ER 40	<b>2925</b>	81	63	M20	3 ÷ 30	0195	4997	3671	0821
CM 5 A - ER 50	<b>2926</b>	91	78	M20	6 ÷ 34	0195	4998	3668	4055

### CASSETTE CON SERIE RIDOTTA DI PINZE ER, MANDRINO E CHIAVE

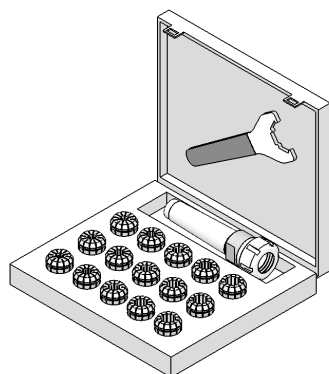
EQUIPMENT BOXES WITH REDUCED SET OF ER COLLETS



TIPO	Art.				
KIT Rid CM 2 A - ER 25	<b>7524</b>	2918	3695	3669	0996: ø 4-6-8-10-12-16
KIT Rid CM 2 A - ER 32	<b>7525</b>	3310	3695	3670	0988: ø 4-6-8-10-12-16-20
KIT Rid CM 3 A - ER 25	<b>7526</b>	2919	3695	3669	0996: ø 4-6-8-10-12-16
KIT Rid CM 3 A - ER 32	<b>7527</b>	2920	3695	3670	0988: ø 4-6-8-10-12-16-20
KIT Rid CM 3 A - ER 40	<b>7528</b>	2921	3695	3671	0821: ø 4-6-8-10-12-16-20-25
KIT Rid CM 4 A - ER 32	<b>7529</b>	2922	3695	3670	0988: ø 4-6-8-10-12-16-20
KIT Rid CM 4 A - ER 40	<b>7530</b>	2923	3695	3671	0821: ø 4-6-8-10-12-16-20-25

### CASSETTE CON SERIE COMPLETA DI PINZE ER, MANDRINO E CHIAVE

EQUIPMENT BOXES WITH COMPLETE SET OF ER COLLETS

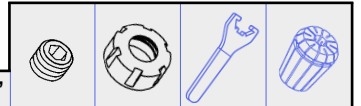
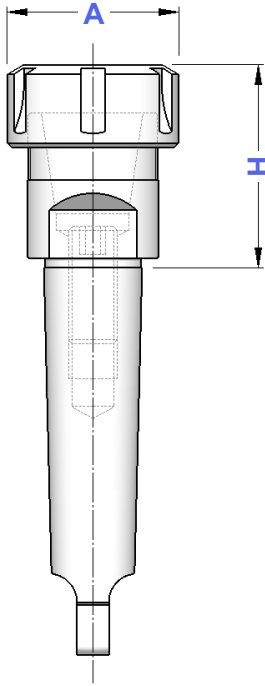


TIPO	Art.				
KIT CM 2 A - ER 25	<b>7508</b>	2918	3695	3669	0996: Ø 2 ÷ 16 (15 Pinze)
KIT CM 2 A - ER 32	<b>7509</b>	3310	3695	3670	0988: Ø 3 ÷ 20 (18 Pinze)
KIT CM 3 A - ER 25	<b>7510</b>	2919	3695	3669	0996: Ø 2 ÷ 16 (15 Pinze)
KIT CM 3 A - ER 32	<b>7511</b>	2920	3695	3670	0988: Ø 3 ÷ 20 (18 Pinze)
KIT CM 3 A - ER 40	<b>7512</b>	2921	3695	3671	0821: Ø 4 ÷ 26 (23 Pinze)
KIT CM 4 A - ER 32	<b>7513</b>	2922	3695	3670	0988: Ø 3 ÷ 20 (18 Pinze)
KIT CM 4 A - ER 40	<b>7514</b>	2923	3695	3671	0821: Ø 4 ÷ 26 (23 Pinze)

**DIN  
228-B**

**PORTAPINZE ER - GHIERA STANDARD  
CON TENONE**

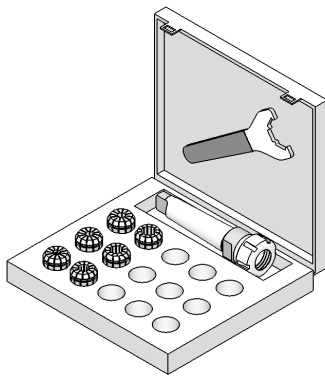
ER - DIN 6499 COLLET CHUCKS WITH TONQUE - STANDARD NUT



TIPO	Art.	H	A	CAPACITA'				
CM 1 - ER 16	<b>8627</b>	40	32	1 ÷ 10	0181	4993	3698	0364
CM 2 - ER 16	<b>8628</b>	42	32	1 ÷ 10	0186	4993	3698	0364
CM 2 - ER 20	<b>8629</b>	50	35	1 ÷ 13	0186	4994	3699	0787
CM 2 - ER 25	<b>8630</b>	54	42	1 ÷ 16	0186	4995	3669	0996
CM 2 - ER 32	<b>8631</b>	59	50	2 ÷ 20	0186	4996	3670	0988
CM 3 - ER 25	<b>8632</b>	53	42	1 ÷ 16	0188	4995	3669	0996
CM 3 - ER 32	<b>8633</b>	70	50	2 ÷ 20	0188	4996	3670	0988
CM 3 - ER 40	<b>8634</b>	80	63	3 ÷ 30	0188	4997	3671	0821
CM 4 - ER 32	<b>8635</b>	60	50	2 ÷ 20	0190	4996	3670	0988
CM 4 - ER 40	<b>8636</b>	81	63	3 ÷ 30	0190	4997	3671	0821
CM 4 - ER 50	<b>8637</b>	96	78	6 ÷ 34	0190	4998	3668	4055
CM 5 - ER 32	<b>8638</b>	50	50	2 ÷ 20	0191	4996	3670	0988
CM 5 - ER 40	<b>8639</b>	81	63	3 ÷ 30	0195	4997	3671	0821
CM 5 - ER 50	<b>8640</b>	91	78	6 ÷ 34	0195	4998	3668	4055

**CASSETTE CON SERIE RIDOTTA  
DI PINZE ER, MANDRINO E CHIAVE**

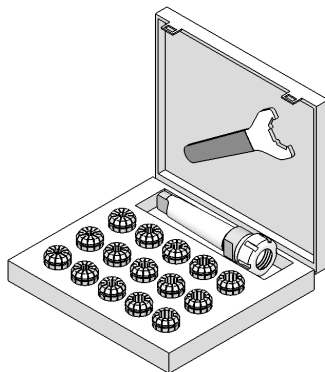
EQUIPMENT BOXES WITH REDUCED SET OF ER COLLETS



TIPO	Art.				
KIT Rid CM 2 - ER 25	<b>7727</b>	8630	3695	3669	0996: Ø 4-6-8-10-12-16
KIT Rid CM 2 - ER 32	<b>7728</b>	8631	3695	3670	0988: Ø 4-6-8-10-12-16-20
KIT Rid CM 3 - ER 25	<b>7729</b>	8632	3695	3669	0996: Ø 4-6-8-10-12-16
KIT Rid CM 3 - ER 32	<b>7730</b>	8633	3695	3670	0988: Ø 4-6-8-10-12-16-20
KIT Rid CM 3 - ER 40	<b>7731</b>	8634	3695	3671	0821: Ø 4-6-8-10-12-16-20-25
KIT Rid CM 4 - ER 32	<b>7732</b>	8635	3695	3670	0988: Ø 4-6-8-10-12-16-20
KIT Rid CM 4 - ER 40	<b>7733</b>	8636	3695	3671	0821: Ø 4-6-8-10-12-16-20-25

**CASSETTE CON SERIE COMPLETA  
DI PINZE ER, MANDRINO E CHIAVE**

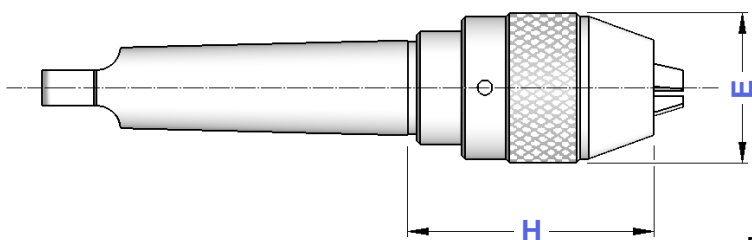
EQUIPMENT BOXES WITH COMPLETE SET OF ER COLLETS



TIPO	Art.				
KIT CM 2 - ER 25	<b>7734</b>	8630	3695	3669	0996: Ø 2 ÷ 16 (15 Pinze)
KIT CM 2 - ER 32	<b>7735</b>	8631	3695	3670	0988: Ø 3 ÷ 20 (18 Pinze)
KIT CM 3 - ER 25	<b>7736</b>	8632	3695	3669	0996: Ø 2 ÷ 16 (15 Pinze)
KIT CM 3 - ER 32	<b>7737</b>	8633	3695	3670	0988: Ø 3 ÷ 20 (18 Pinze)
KIT CM 3 - ER 40	<b>7738</b>	8634	3695	3671	0821: Ø 4 ÷ 26 (23 Pinze)
KIT CM 4 - ER 32	<b>7739</b>	8635	3695	3670	0988: Ø 3 ÷ 20 (18 Pinze)
KIT CM 4 - ER 40	<b>7740</b>	8636	3695	3671	0821: Ø 4 ÷ 26 (23 Pinze)

**DIN  
228-B**

**MANDRINI AUTOSERRANTI INTEGRALI - ROTAZIONE DESTRA**  
MONOLITHIC DRILL CHUCKS - RIGHT SPIN



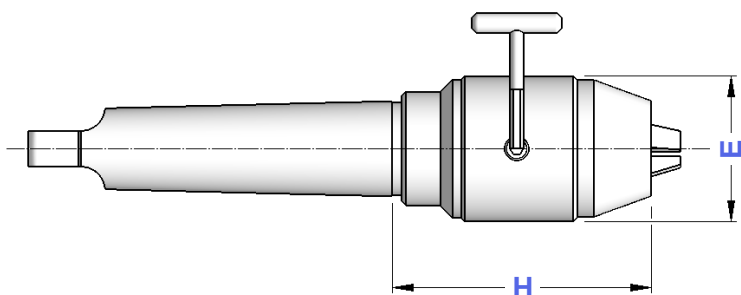
Precisione di rotazione: 0,05 mm  
Runout accuracy: 0,05 mm

TIPO	Art.	CAPACITA'	E	H	
CM 2 - DC 13	<b>8646</b>	1 ÷ 13	50	86	2370
CM 3 - DC 13	<b>8647</b>	1 ÷ 13	50	86	2370
CM 3 - DC 16	<b>8648</b>	3 ÷ 16	57	90	2371
CM 4 - DC 13	<b>8649</b>	1 ÷ 13	50	87	2370
CM 4 - DC 16	<b>8650</b>	3 ÷ 16	57	91	2371



**DIN  
228-B**

**MANDRINI AUTOSERRANTI INTEGRALI - ROTAZIONE DESTRA E SINISTRA**  
MONOLITHIC DRILL CHUCKS - RIGHT & LEFT SPIN



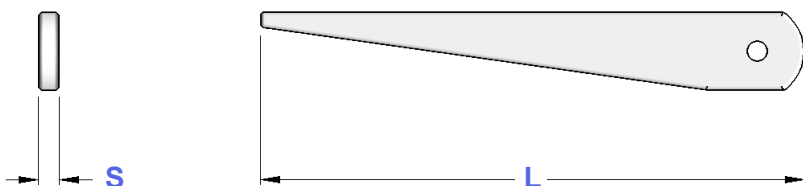
Precisione di rotazione: 0,05 mm  
Runout accuracy: 0,05 mm

TIPO	Art.	CAPACITA'	E	H	
CM 2 - DCU 13	<b>8651</b>	1 ÷ 13	50	87	2372
CM 3 - DCU 13	<b>8652</b>	1 ÷ 13	50	87	2372
CM 3 - DCU 16	<b>8653</b>	3 ÷ 16	50	92	
CM 4 - DCU 13	<b>8654</b>	1 ÷ 13	50	88	2372
CM 4 - DCU 16	<b>8655</b>	3 ÷ 16	50	94	

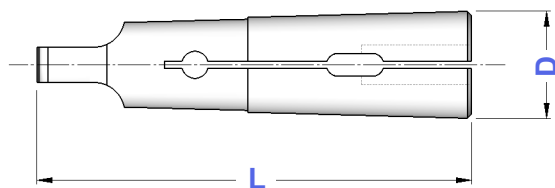


**DIN  
317**

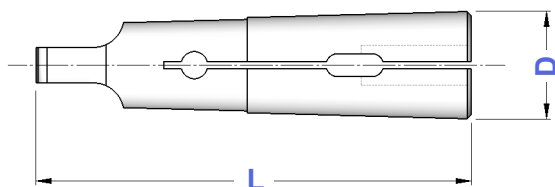
**CACCIACONI**  
CONE EJECTORS



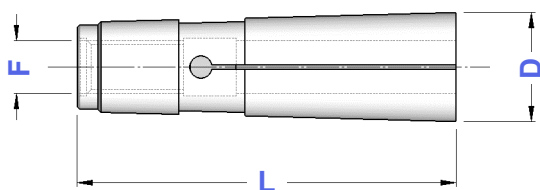
TIPO	Art.	L	S
BC.CM 0	<b>5235</b>	90	2
BC.CM 1	<b>5236</b>	140	5
BC.CM 2			
BC.CM 3	<b>5237</b>	190	7
BC.CM 4	<b>5238</b>	225	10
BC.CM 5	<b>5239</b>	265	15
BC.CM 6			

**DIN  
6329****PINZE CONO MORSE PER PUNTE**  
*MT COLLETS FOR TWIST DRILLS*

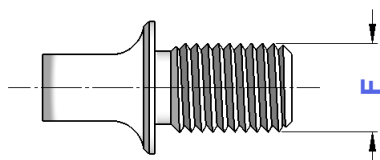
TIPO	Art.	CAPACITA'	D	L	Einheits
CM 0 - PUNTE	<b>5570 P</b>	1,5 ÷ 5,5	9,0	59,5	510E
CM 1 - PUNTE	<b>0640 P</b>	1,5 ÷ 10,0	12,2	65,5	511E
CM 2 - PUNTE	<b>0641 P</b>	3,0 ÷ 15,0	18,0	80,0	514E
CM 3 - PUNTE	<b>0642 P</b>	8,0 ÷ 20,0	24,0	99,0	545E
CM 4 - PUNTE	<b>0643 P</b>	12,0 ÷ 25,0	31,5	124,0	548E
CM 5 - PUNTE	<b>5571 P</b>	20,0 ÷ 36,0	44,5	156,2	599E

**DIN  
6328****PINZE CONO MORSE PER MASCHI**  
*MT COLLETS FOR MILLING CUTTERS*

TIPO	Art.	CAPACITA'	D	L	Einheits
CM 0 - MASCHI	<b>5570 M</b>	2,5 ÷ 4,5	9,0	59,5	500E
CM 1 - MASCHI	<b>0640 M</b>	2,5 ÷ 10,0	12,2	65,5	501E
CM 2 - MASCHI	<b>0641 M</b>	4,5 ÷ 14,0	18,0	80,0	504E
CM 3 - MASCHI	<b>0642 M</b>	8,0 ÷ 18,0	24,0	99,0	535E
CM 4 - MASCHI	<b>0643 M</b>	12,0 ÷ 25,0	31,5	124,0	538E
CM 5 - MASCHI	<b>5571 M</b>	18,0 ÷ 36,0	44,5	156,2	589E

**UNI  
4702****PINZE CONO MORSE CON FILETTO**  
*THREADED MT COLLETS*

TIPO	Art.	F	CAPACITA'	D	L	Einheits
CM 2	<b>0752</b>	M 10	1 ÷ 14	18,0	69,0	503E
CM 3	<b>0712</b>	M 12	3 ÷ 18	24,1	85,5	536E
CM 4	<b>0865</b>	M 16	4 ÷ 25	31,6	108,5	539E

**DIN 228  
A ⇔ B****TENONI**  
*TONQUES*

TIPO	Art.	F
T. CM 1 - M 6	<b>4079</b>	M 6
T. CM 2 - M 10	<b>4080</b>	M 10
T. CM 3 - M 12	<b>4081</b>	M 12
T. CM 4 - M 16	<b>4082</b>	M 16
T. CM 5 - M 20	<b>4083</b>	M 20



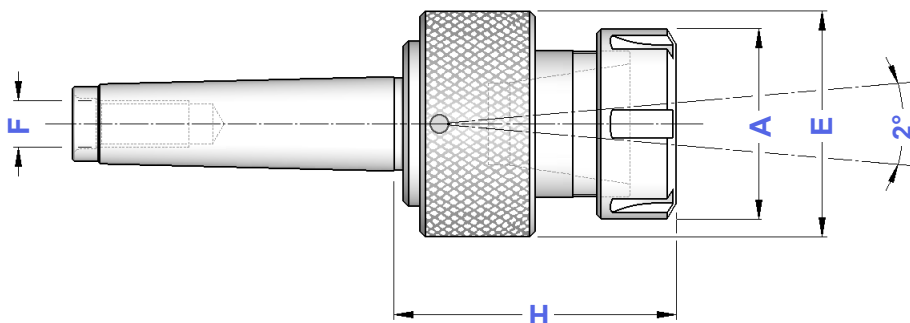
**DIN  
228-A**

**PORTA ALESATORI OSCILLANTI CON ATTACCO CM  
CON PINZA ER**

FLOATING REAMER HOLDERS WITH ER - DIN 6499 COLLET



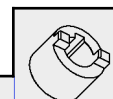
TIPO	Art.	A	E	H	F	CAPACITA'			
CM2 RM - ER 16	<b>3532</b>	32	40	55	M10	1 ÷ 10	4993	3698	0364
CM2 RM - ER 20	<b>3533</b>	35	40	60	M10	1 ÷ 13	4994	3699	0787
CM3 RM - ER 25	<b>3534</b>	42	61	63	M12	1 ÷ 16	4995	3669	0996
CM3 RM - ER 32	<b>3535</b>	50	61	75	M12	2 ÷ 20	4996	3670	0988



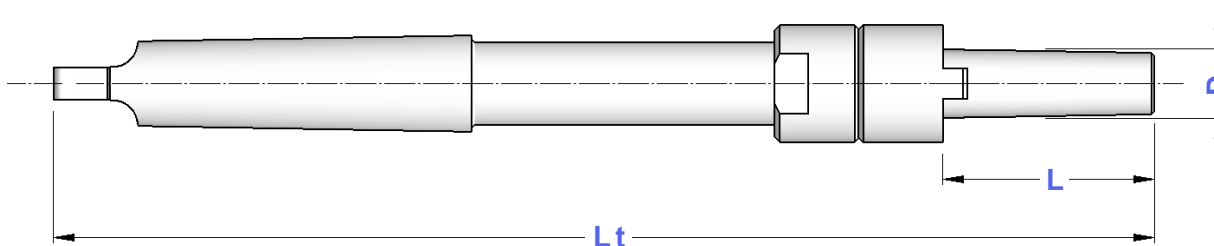
**DIN  
217**

**PORTA ALESATORI A MANICOTTO CON ATTACCO CM  
CON ESTRATTORE**

MT SHELL REAMER HOLDERS WITH EJECTOR



TIPO	Art.	D	L	Lt	
PA. CM 2 - D. 10	<b>1906</b>	10	40	220	0283
PA. CM 3 - D. 13	<b>1907</b>	13	45	250	0286
PA. CM 3 - D. 16	<b>1913</b>	16	50	261	0289
PA. CM 3 - D. 19	<b>1914</b>	19	56	270	0301
PA. CM 3 - D. 22	<b>1922</b>	22	63	278	0302
PA. CM 4 - D. 19	<b>1925</b>	19	56	298	0301
PA. CM 4 - D. 22	<b>1939</b>	22	63	312	0302
PA. CM 4 - D. 27	<b>1944</b>	27	71	325	0304
PA. CM 4 - D. 32	<b>1945</b>	32	80	345	0306
PA. CM 5 - D. 27	<b>1946</b>	27	71	359	0304
PA. CM 5 - D. 32	<b>1964</b>	32	80	376	0306
PA. CM 5 - D. 40	<b>1966</b>	40	90	396	0313
PA. CM 5 - D. 50	<b>1972</b>	50	100	416	0318



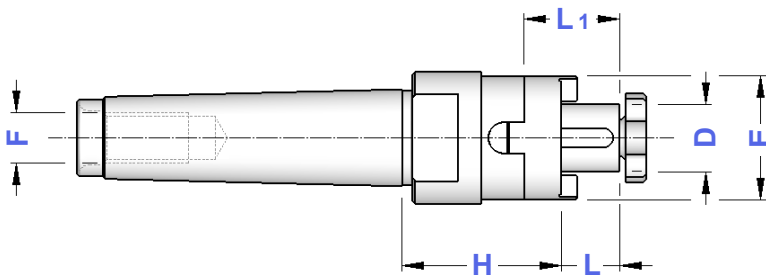
# DIN 228-A

## PORTAFRESE COMBINATI A CM CON FILETTO

MORSE TAPER SHANK WITH THREAD DIN 6358 SHELL END MILL HOLDERS



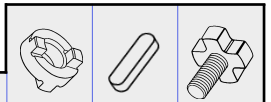
TIPO	Art.	D	H	L1	L	E	F			
CM 2 A - D. 16 C	<b>4420</b>	16	37	27	17	32	M10	4090	0115	4985
CM 2 A - D. 22 C	<b>4421</b>	22	42	31	19	40	M10	4091	0116	4986
CM 3 A - D. 16 C	<b>4292</b>	16	37	27	17	32	M12	4090	0115	4985
CM 3 A - D. 22 C	<b>4293</b>	22	42	31	19	40	M12	4091	0116	4986
CM 3 A - D. 27 C	<b>4294</b>	27	42	33	21	48	M12	4092	0122	4987
CM 3 A - D. 32 C	<b>4295</b>	32	63	38	24	58	M12	4093	0125	4988
CM 4 A - D. 16 C	<b>4296</b>	16	55	27	17	32	M16	4090	0115	4985
CM 4 A - D. 22 C	<b>4297</b>	22	55	31	19	40	M16	4091	0116	4986
CM 4 A - D. 27 C	<b>4298</b>	27	55	33	21	48	M16	4092	0122	4987
CM 4 A - D. 32 C	<b>4299</b>	32	55	38	24	58	M16	4093	0125	4988
CM 5 A - D. 22 C	<b>4422</b>	22	75	31	19	40	M20	4091	0116	4986
CM 5 A - D. 27 C	<b>4423</b>	27	75	33	21	48	M20	4092	0122	4987
CM 5 A - D. 32 C	<b>4424</b>	32	75	38	24	58	M20	4093	0125	4988
CM 5 A - D. 40 C	<b>4425</b>	40	75	41	27	70	M20	4094	0133	4989



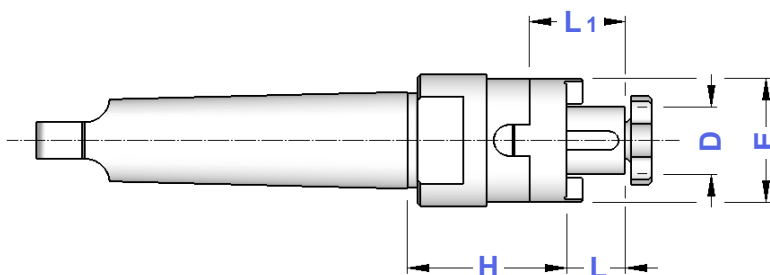
# DIN 228-B

## PORTAFRESE COMBINATI A CM CON TENONE

MORSE TAPER SHANK WITH TONQUE DIN 6358 SHELL END MILL HOLDERS



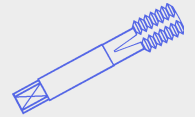
TIPO	Art.	D	H	L1	L	E			
CM 2 - D. 16 C	<b>8656</b>	16	37	27	17	32	4090	0115	4985
CM 2 - D. 22 C	<b>8657</b>	22	42	31	19	40	4091	0116	4986
CM 3 - D. 16 C	<b>8658</b>	16	37	27	17	32	4090	0115	4985
CM 3 - D. 22 C	<b>8659</b>	22	42	31	19	40	4091	0116	4986
CM 3 - D. 27 C	<b>8660</b>	27	42	33	21	48	4092	0122	4987
CM 3 - D. 32 C	<b>8661</b>	32	63	38	24	58	4093	0125	4988
CM 4 - D. 16 C	<b>8662</b>	16	55	27	17	32	4090	0115	4985
CM 4 - D. 22 C	<b>8663</b>	22	55	31	19	40	4091	0116	4986
CM 4 - D. 27 C	<b>8664</b>	27	55	33	21	48	4092	0122	4987
CM 4 - D. 32 C	<b>8665</b>	32	55	38	24	58	4093	0125	4988
CM 5 - D. 22 C	<b>8666</b>	22	75	31	19	40	4091	0116	4986
CM 5 - D. 27 C	<b>8667</b>	27	75	33	21	48	4092	0122	4987
CM 5 - D. 32 C	<b>8668</b>	32	75	38	24	58	4093	0125	4988
CM 5 - D. 40 C	<b>8669</b>	40	75	41	27	70	4094	0133	4989



# DIN 228-A

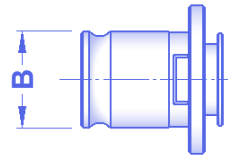
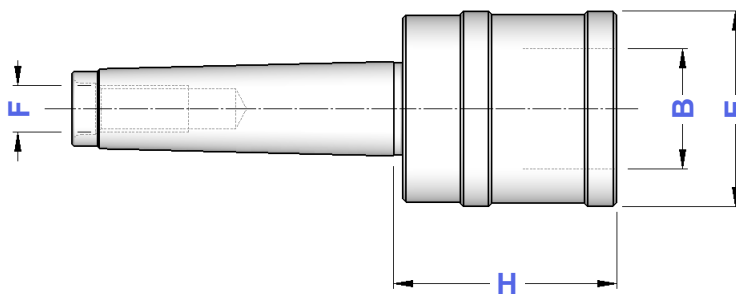
## MASCHIATORI CAMBIO RAPIDO A CM CON FILETTO SENZA COMPENSAZIONE

QUICK CHANGE TAP HOLDERS WITH THREAD WITHOUT COMPENSATION



TIPO	Art.	H	E	B	F	
CM 2 A FISSO - B. 1	<b>4696</b>	44	36	19	M10	M 3 ÷ M 12 (*M16)
CM 2 A FISSO - B. 2	<b>4697</b>	61	53	31	M10	M 6 ÷ M 20 (*M30)
CM 3 A FISSO - B. 1	<b>4698</b>	44	36	19	M12	M 3 ÷ M 12 (*M16)
CM 3 A FISSO - B. 2	<b>4699</b>	61	53	31	M12	M 6 ÷ M 20 (*M30)

\* Bussole con grani  
Adapters with screws



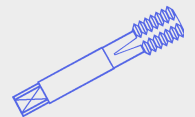
**Bussole a Maschiare**  
da pag. 172 a pag. 175  
del Catalogo Generale

Tap Adapters  
on General Catalogue  
from page 172 to page 175

# DIN 228-B

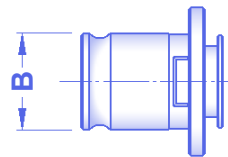
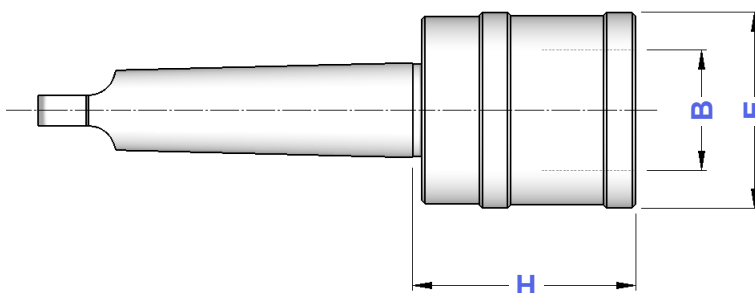
## MASCHIATORI CAMBIO RAPIDO A CM CON TENONE SENZA COMPENSAZIONE

QUICK CHANGE TAP HOLDERS WITH TONQUE WITHOUT COMPENSATION



TIPO	Art.	H	E	B	
CM 1 FISSO - B. 0	<b>4279</b>	39	26	13	M 1 ÷ M 10
CM 2 FISSO - B. 0	<b>4282</b>	40	26	13	M 1 ÷ M 10
CM 2 FISSO - B. 1	<b>4283</b>	45	36	19	M 3 ÷ M 12 (*M16)
CM 2 FISSO - B. 2	<b>4027</b>	61	50	31	M 6 ÷ M 20 (*M30)
CM 3 FISSO - B. 1	<b>4284</b>	45	36	19	M 3 ÷ M 12 (*M16)
CM 3 FISSO - B. 2	<b>4285</b>	61	50	31	M 6 ÷ M 20 (*M30)
CM 4 FISSO - B. 2	<b>4340</b>	61	50	31	M 6 ÷ M 20 (*M30)

\* Bussole con grani  
Adapters with screws

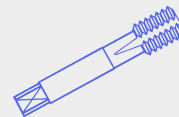


**Bussole a Maschiare**  
da pag. 172 a pag. 175  
del Catalogo Generale

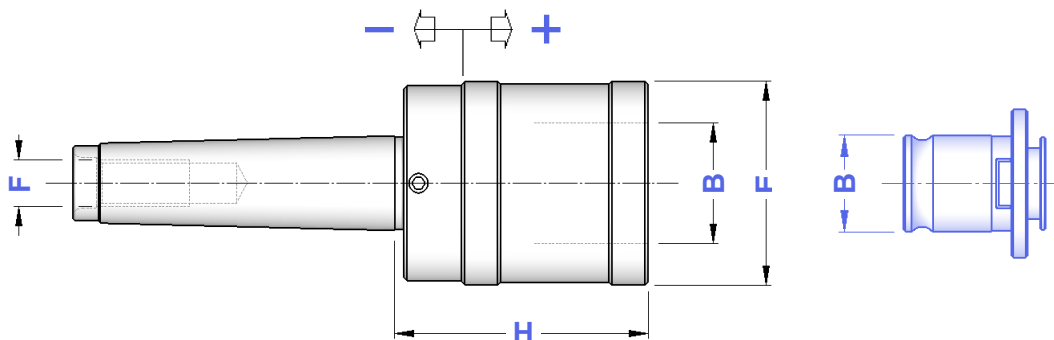
Tap Adapters  
on General Catalogue  
from page 172 to page 175

**DIN  
228-A****MASCHIATORI CAMBIO RAPIDO A CM CON FILETTO  
DOPPIA COMPENSAZIONE**

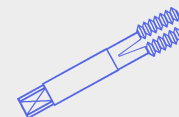
DOUBLE COMPENSATION QUICK CHANGE TAP HOLDERS WITH THREAD



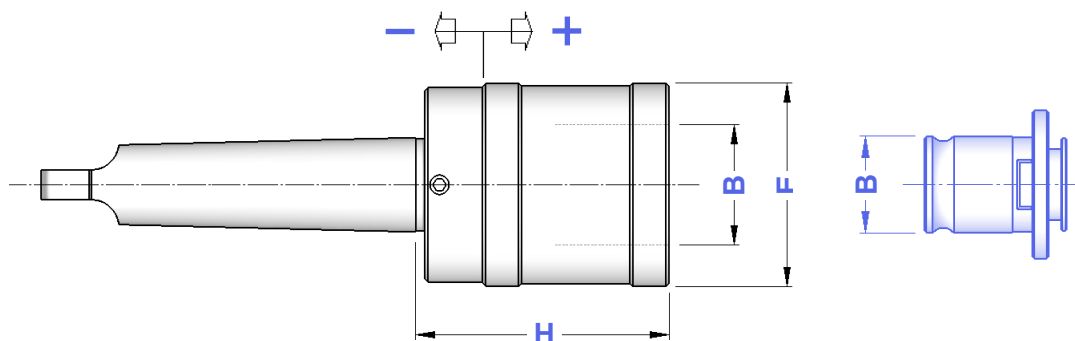
TIPO	Art.	H	E	B	F	COMPENSAZIONE	
CM 2 A - B. 0	<b>4287</b>	44	26	13	M10	- 6,5 + 6,5	M 1 ÷ M 10
CM 2 A - B. 1	<b>4286</b>	46	36	19	M10	- 7,5 + 7,5	M 3 ÷ M 12 (*M16)
CM 3 A - B. 1	<b>4288</b>	46	36	19	M12	- 7,5 + 7,5	M 3 ÷ M 12 (*M16)
CM 3 A - B. 2	<b>4289</b>	70	53	31	M12	- 12,5 + 12,5	M 6 ÷ M 20 (*M30)
CM 4 A - B. 2	<b>4290</b>	71	53	31	M16	- 12,5 + 12,5	M 6 ÷ M 20 (*M30)
CM 4 A - B. 3	<b>4291</b>	104	78	48	M16	- 20,0 + 20,0	M14 ÷ M 33 (*M48)
CM 5 A - B. 3	<b>4426</b>	104	78	48	M20	- 20,0 + 20,0	M14 ÷ M 33 (*M48)

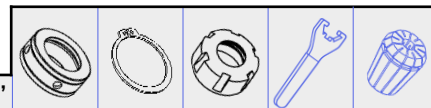
\* Bussole con grani  
Adapters with screws**Bussole a Maschiare  
da pag. 172 a pag. 175  
del Catalogo Generale**Tap Adapters  
on General Catalogue  
from page 172 to page 175I maschiatori sono fornibili anche con la sola compensazione a trazione ( SFILAMENTO)  
Tap holders are also available with traction compensation only (TENSION ONLY)**DIN  
228-B****MASCHIATORI CAMBIO RAPIDO A CM CON TENONE  
DOPPIA COMPENSAZIONE**

DOUBLE COMPENSATION QUICK CHANGE TAP HOLDERS WITH TONQUE

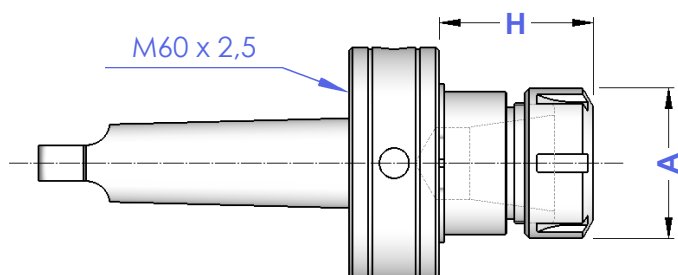


TIPO	Art.	H	E	B	COMPENSAZIONE	
CM 2 - B.0	<b>4278</b>	44	26	13	- 6,5 + 6,5	M 1 ÷ M 10
CM 2 - B.1	<b>3846</b>	46	36	19	- 7,5 + 7,5	M 3 ÷ M 12 (*M16)
CM 3 - B.1	<b>3847</b>	46	36	19	- 7,5 + 7,5	M 3 ÷ M 12 (*M16)
CM 3 - B.2	<b>3848</b>	69	53	31	- 12,5 + 12,5	M 6 ÷ M 20 (*M30)
CM 4 - B.2	<b>3849</b>	70	53	31	- 12,5 + 12,5	M 6 ÷ M 20 (*M30)
CM 4 - B.3	<b>3850</b>	104	78	48	- 20,0 + 20,0	M14 ÷ M 33 (*M48)
CM 5 - B.3	<b>4427</b>	104	78	48	- 20,0 + 20,0	M14 ÷ M 33 (*M48)

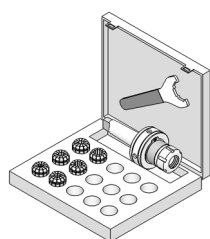
\* Bussole con grani  
Adapters with screws**Bussole a Maschiare  
da pag. 172 a pag. 175  
del Catalogo Generale**Tap Adapters  
on General Catalogue  
from page 172 to page 175I maschiatori sono fornibili anche con la sola compensazione a trazione ( SFILAMENTO)  
Tap holders are also available with traction compensation only (TENSION ONLY)

**RAG****PORTAPINZE ER - ATTACCO TIPO FAMUP RAG**  
FAMUP RAG TYPE SHANK ER - DIN 6499 COLLET CHUCKS

TIPO	Art.	H	A	CAPACITA'					
CM4 FAMUP RAG - ER 32	<b>4277</b>	52	50	2 ÷ 20	2420	0009	4996	3670	0988
CM4 FAMUP RAG - ER 40	<b>4280</b>	55	63	3 ÷ 30	2420	0077	4997	3671	0821

**CASSETTE CON SERIE RIDOTTA  
DI PINZE ER MANDRINO E CHIAVE**

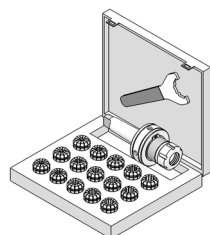
EQUIPMENT BOXES WITH REDUCED SET OF ER COLLETS



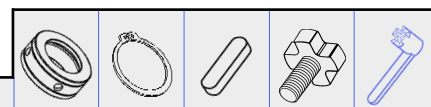
TIPO	Art.				
KIT Rid CM 4 RAG - ER 32	<b>7531</b>	4277	3695	3670	0988: ø 4 - 6 - 8 - 10 - 12 - 16 - 20
KIT Rid CM 4 RAG - ER 40	<b>7721</b>	4280	3695	3671	0821: ø 4 - 6 - 8 - 10 - 12 - 16 - 20 - 25

**CASSETTE CON SERIE COMPLETA  
DI PINZE ER MANDRINO E CHIAVE**

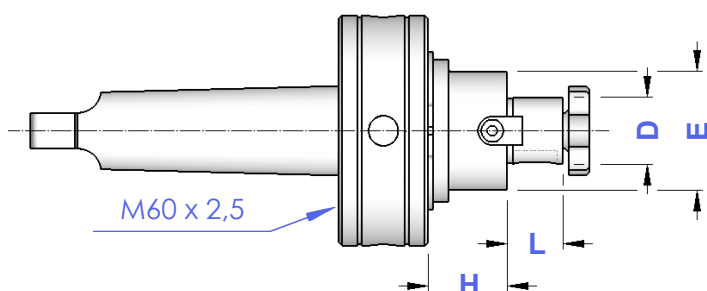
EQUIPMENT BOXES WITH COMPLETE SET OF ER COLLETS



TIPO	Art.				
KIT CM 4 RAG - ER 32	<b>7515</b>	4277	3695	3670	0988: Ø 3 ÷ 20 (18 Pinze)
KIT CM 4 RAG - ER 40	<b>7722</b>	4280	3695	3671	0821: Ø 4 ÷ 26 (23 Pinze)

**RAG****PORTAFRESE FISSO - ATTACCO TIPO FAMUP RAG**  
FAMUP RAG TYPE SHANK DIN 6357 FACE MILL HOLDERS

TIPO	Art.	D	H	L	E					
CM 4 RAG - D. 16 FISSO	<b>2414</b>	16	27	17	32	2420	0009	0041	4985	4562
CM 4 RAG - D. 22 FISSO	<b>2415</b>	22	27	19	40	2420	0009	0044	4986	4563
CM 4 RAG - D. 27 FISSO	<b>2416</b>	27	27	21	48	2420	0009	0045	4987	4564
CM 4 RAG - D. 32 FISSO	<b>2417</b>	32	27	24	58	2420	0077	0047	4988	4565

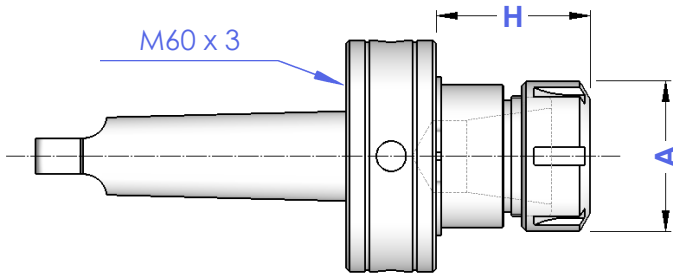


**BIMAK****PORTAPINZE ER - ATTACCO TIPO BIMAK**

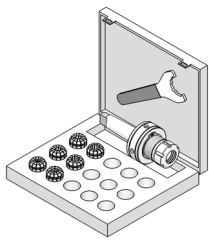
BIMAK TYPE SHANK ER - DIN 6499 COLLET CHUCKS



TIPO	Art.	H	A	CAPACITA'					
CM 4 BIMAK - ER 32	<b>4281</b>	52	50	2 ÷ 20	2423	0009	4996	3670	0988
CM 4 BIMAK - ER 40	<b>4354</b>	55	63	3 ÷ 30	2423	0077	4997	3671	0821

**CASSETTE CON SERIE RIDOTTA  
DI PINZE ER MANDRINO E CHIAVE**

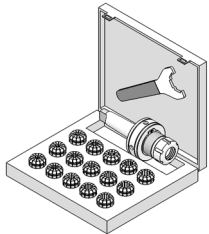
EQUIPMENT BOXES WITH REDUCED SET OF ER COLLETS



TIPO	Art.				
KIT Rid CM 4 BIMAK - ER 32	<b>7723</b>	4281	3695	3670	0988: $\varnothing$ 4-6-8-10-12-16-20
KIT Rid CM 4 BIMAK - ER 40	<b>7724</b>	4354	3695	3671	0821: $\varnothing$ 4-6-8-10-12-16-20-25

**CASSETTE CON SERIE COMPLETA  
DI PINZE ER MANDRINO E CHIAVE**

EQUIPMENT BOXES WITH COMPLETE SET OF ER COLLETS



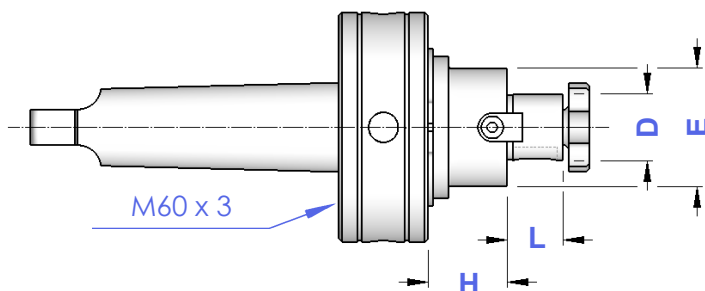
TIPO	Art.				
KIT CM 4 BIMAK - ER 32	<b>7725</b>	4281	3695	3670	0988: $\varnothing$ 3 ÷ 20 (18 Pinze)
KIT CM 4 BIMAK - ER 40	<b>7726</b>	4354	3695	3671	0821: $\varnothing$ 4 ÷ 26 (23 Pinze)

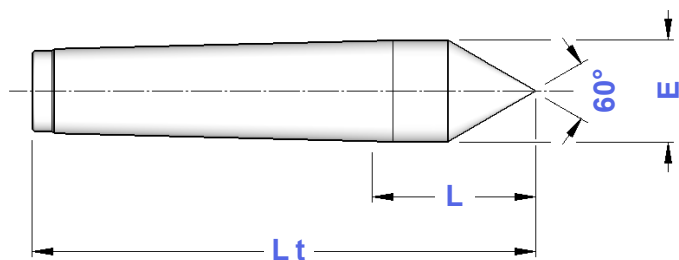
**BIMAK****PORTAFRESE FISSO - ATTACCO TIPO BIMAK**

BIMAK TYPE SHANK DIN 6357 FACE MILL HOLDERS

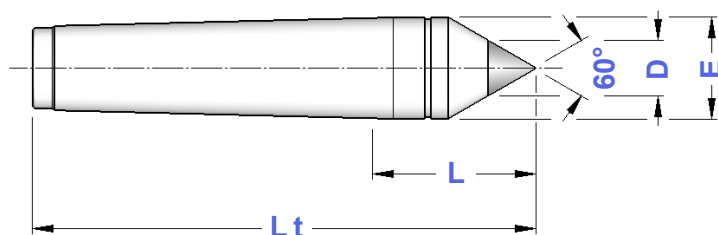


TIPO	Art.	D	H	L	E					
CM 4 BIMAK - D. 16 FISSO	<b>2260</b>	16	27	17	32	2423	0009	0041	4985	4562
CM 4 BIMAK - D. 22 FISSO	<b>2261</b>	22	27	19	40	2423	0009	0044	4986	4563
CM 4 BIMAK - D. 27 FISSO	<b>2262</b>	27	27	21	48	2423	0009	0045	4987	4564
CM 4 BIMAK - D. 32 FISSO	<b>2263</b>	32	27	24	58	2423	0077	0047	4988	4565

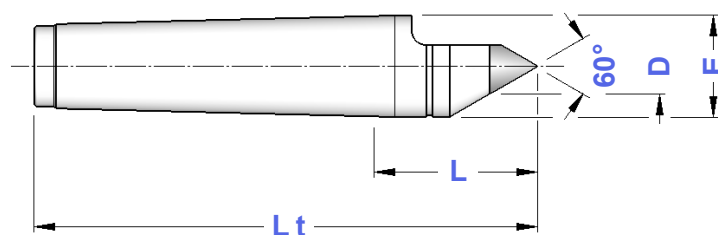


**DIN 806****CONTROPUNTE ATTACCO CM IN ACCIAIO**  
STEEL TYPE MORSE TAPER SHANK TAILSTOCKS**CP.A**

TIPO	Art.	E	L	Lt
CP. A - CM 1	<b>4335</b>	12,2	26,5	80
CP. A - CM 2	<b>4336</b>	18,0	36,0	100
CP. A - CM 3	<b>4337</b>	24,1	44,0	125
CP. A - CM 4	<b>4338</b>	31,6	57,5	160
CP. A - CM 5	<b>4339</b>	44,7	70,5	200
CP. A - CM 6	<b>8487</b>	63,8	88,0	270

**DIN 806****CONTROPUNTE ATTACCO CM CON METALLO DURO**  
MORSE TAPER SHANK TAILSTOCKS WITH SOLID CARBIDE**CP.W**

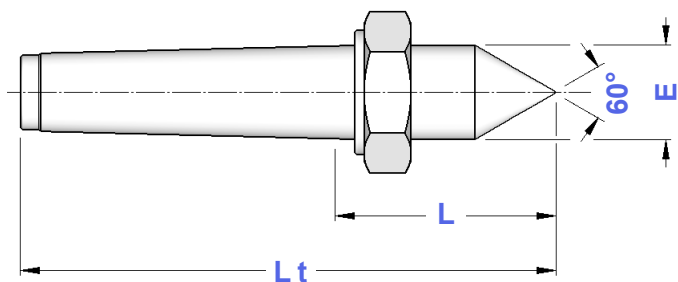
TIPO	Art.	D	E	L	Lt
CP. W - CM 1	<b>3957</b>	7	12,2	26,5	80
CP. W - CM 2	<b>4341</b>	7	18,0	36,0	100
CP. W - CM 3	<b>4342</b>	11	24,1	44,0	125
CP. W - CM 4	<b>4343</b>	14	31,6	57,5	160
CP. W - CM 5	<b>4344</b>	18	44,7	70,5	200
CP. W - CM 6	<b>8488</b>	18	63,8	88,0	270

**DIN 806****CONTROPUNTE PER RETTIFICA CON METALLO DURO**  
MT SHANK TAILSTOCKS WITH SOLID CARBIDE FOR GRINDING**CP.WR**

TIPO	Art.	D	E	L	Lt
CP. WR - CM 1	<b>3959</b>	7	12,2	26,5	80
CP. WR - CM 2	<b>4345</b>	7	18,0	36,0	100
CP. WR - CM 3	<b>4346</b>	11	24,1	44,0	125
CP. WR - CM 4	<b>4347</b>	14	31,6	57,5	160
CP. WR - CM 5	<b>4348</b>	18	44,7	70,5	200
CP. WR - CM 6	<b>8489</b>	18	63,8	88,0	270

**DIN 807**

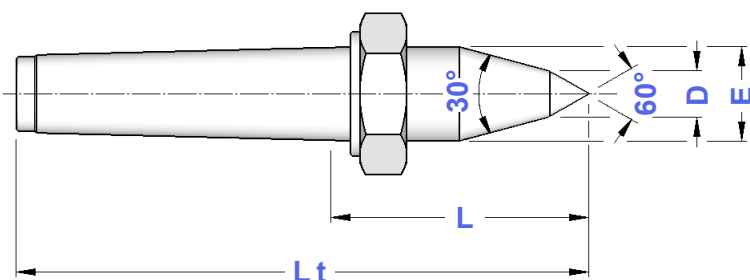
**CONTROPUNTE ATTACCO CM IN ACCIAIO  
CON ESTRATTORE**  
STEEL TAILSTOCKS WITH EXTRACTOR

**CP.E**

TIPO	Art.	E	L	Lt
CP. E - CM 1	<b>5380</b>	12,2	26,5	80
CP. E - CM 2	<b>5381</b>	18,0	36,0	100
CP. E - CM 3	<b>5382</b>	24,1	44,0	125
CP. E - CM 4	<b>5383</b>	31,6	57,5	160
CP. E - CM 5	<b>5384</b>	44,7	70,5	200
CP. E - CM 6	<b>8490</b>	63,8	88,0	270

**DIN 807**

**CONTROPUNTE ATTACCO CM IN ACCIAIO  
CON ESTRATTORE - TIPO COPY**  
STEEL TAILSTOCKS WITH EXTRACTOR - COPY TYPE

**CP.EL**

TIPO	Art.	D	E	L	Lt
CP. EL - CM 1	<b>8491</b>	5	12,2	26,5	80,0
CP. EL - CM 2	<b>5385</b>	10	18,0	54,0	118,0
CP. EL - CM 3	<b>5386</b>	10	24,1	67,0	148,0
CP. EL - CM 4	<b>5387</b>	14	31,6	84,0	186,5
CP. EL - CM 5	<b>5388</b>	16	44,7	112,5	242,0
CP. EL - CM 6	<b>8492</b>	20	63,8	148,0	330,0

**TP**

**TAMPONI PULITORI PER SEDE CONO MORSE**  
MORSE TAPER CLEANERS



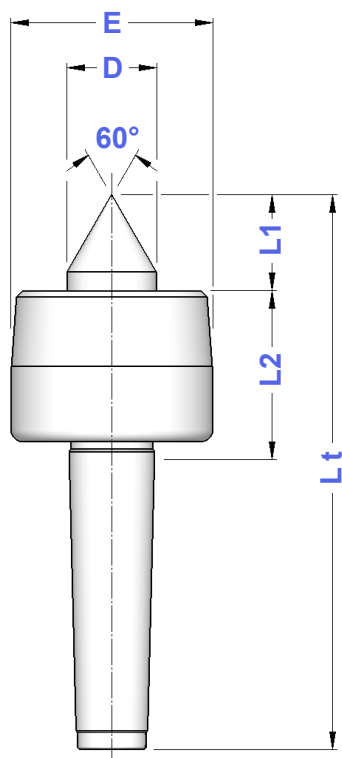
TIPO	Art.
TP - CM. 1	<b>4411</b>
TP - CM. 2	<b>4412</b>
TP - CM. 3	<b>4413</b>
TP - CM. 4	<b>4414</b>
TP - CM. 5	<b>4415</b>
TP - CM. 6	<b>5065</b>

La gamma completa di Tamponi Pulitori si trova a pagina 196 del Catalogo Generale  
Complete range of Taper Cleaners is on page 196 of General Catalogue



# CP.R

## CONTROPUNTE ROTANTI CON ATTACCO CM MORSE TAPER SHANK ROTARY TAILSTOCKS



### TIPO STANDARD

STANDARD TYPE

TIPO	Art.	E	D	L1	L2	Lt	Rpm Max	Kg. Max
CP. RS - CM 1	<b>4349</b>	36	15	17,0	43,5	114,0	7000	100
CP. RS - CM 2	<b>4350</b>	45	20	24,0	41,0	129,0	7000	200
CP. RS - CM 3	<b>4351</b>	60	25	31,0	48,5	160,5	5000	500
CP. RS - CM 4	<b>4352</b>	70	32	41,0	61,5	205,0	3800	800
CP. RS - CM 5	<b>4353</b>	90	40	50,5	78,5	258,5	3000	2000
CP. RS - CM 6	<b>8330</b>	105	50	57,5	94,5	334,0	2600	3500

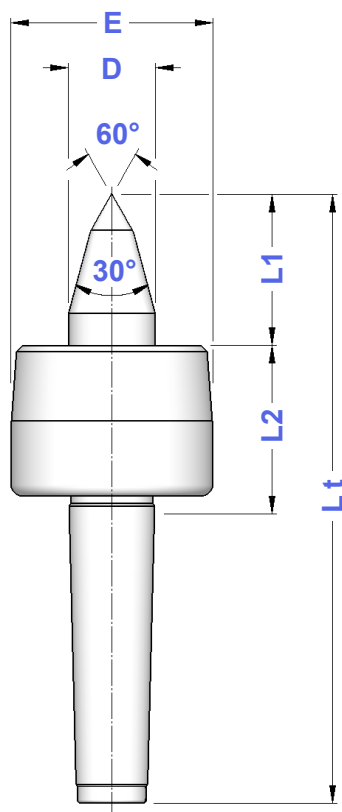
### TIPO A DOPPIA SFERA

DOUBLE SPHERES TYPE

TIPO	Art.	E	D	L1	L2	Lt	Rpm Max	Kg. Max
CP. RD - CM 2	<b>5311</b>	32	15	20	42	126,0	6000	200
CP. RD - CM 3	<b>5312</b>	34	15	20	43	144,0	6000	400
CP. RD - CM 4	<b>5313</b>	43	20	26	50	178,5	6000	800
CP. RD - CM 5	<b>5314</b>	58	30	39	66	234,5	4000	1200

# CP.RC

## CONTROPUNTE ROTANTI COPY CON ATTACCO CM MORSE TAPER SHANK COPY ROTARY TAILSTOCKS



### TIPO COPY STANDARD

STANDARD COPY TYPE

TIPO	Art.	E	D	L1	L2	Lt	Rpm Max	Kg. Max
CP. RCS - CM 1	<b>5391</b>	28	10	16	30,0	101,0	3800	80
CP. RCS - CM 2	<b>5392</b>	45	20	34	41,0	139,0	7000	140
CP. RCS - CM 3	<b>5393</b>	60	25	47	48,5	176,5	5000	400
CP. RCS - CM 4	<b>5394</b>	70	32	53	61,5	217,0	3800	500
CP. RCS - CM 5	<b>5395</b>	90	40	65	78,5	273,0	3000	1200
CP. RCS - CM 6	<b>8331</b>	105	50	78	94,5	354,5	2600	2500

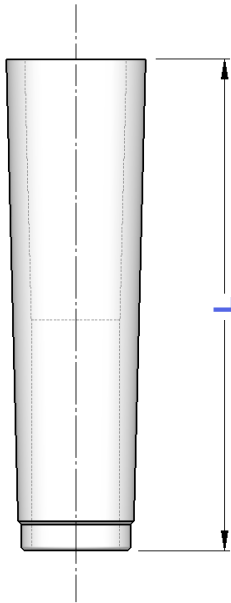
### TIPO COPY A DOPPIA SFERA

DOUBLE SPHERES COPY TYPE

TIPO	Art.	E	D	L1	L2	Lt	Rpm Max	Kg. Max
CP. RCD - CM 2	<b>5396</b>	32	15	29	42	135,0	6000	150
CP. RCD - CM 3	<b>5397</b>	34	15	30	43	154,0	6000	300
CP. RCD - CM 4	<b>5398</b>	43	20	36	50	188,5	6000	700
CP. RCD - CM 5	<b>5399</b>	58	30	46	70	245,5	4000	1000

# RCM.P

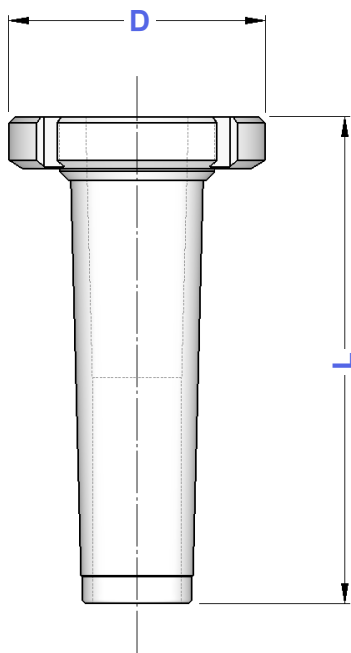
## RIDUZIONI A CM PASSANTI LOOP MORSE TAPER ADAPTERS



TIPO	Art.	Est.	Int.	L
RCM.P/2 - 1	<b>4097/2-1</b>	2	1	50
RCM.P/3 - 1	<b>4097/3-1</b>	3	1	55
RCM.P/3 - 2	<b>4097/3-2</b>	3	2	60
RCM.P/4 - 1	<b>4097/4-1</b>	4	1	65
RCM.P/4 - 2	<b>4097/4-2</b>	4	2	70
RCM.P/4 - 3	<b>4097/4-3</b>	4	3	70
RCM.P/5 - 2	<b>4097/5-2</b>	5	2	80
RCM.P/5 - 3	<b>4097/5-3</b>	5	3	80
RCM.P/5 - 4	<b>4097/5-4</b>	5	4	80
RCM.P/6 - 3	<b>4097/6-3</b>	6	3	110
RCM.P/6 - 4	<b>4097/6-4</b>	6	4	110
RCM.P/6 - 5	<b>4097/6-5</b>	6	5	110

# RCM.E

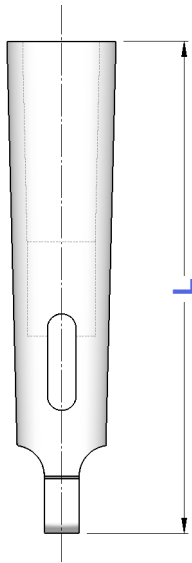
## RIDUZIONI A CM PASSANTI CON ESTRATTORE MORSE TAPER ADAPTERS WITH EXTRACTOR



TIPO	Art.	Est.	Int.	L	D
RCM.E/2 - 1	<b>4042/2-1</b>	2	1	84	38
RCM.E/3 - 1	<b>4042/3-1</b>	3	1	102	48
RCM.E/3 - 2	<b>4042/3-2</b>	3	2	102	48
RCM.E/4 - 1	<b>4042/4-1</b>	4	1	122	57
RCM.E/4 - 2	<b>4042/4-2</b>	4	2	122	57
RCM.E/4 - 3	<b>4042/4-3</b>	4	3	122	57
RCM.E/5 - 2	<b>4042/5-2</b>	5	2	153	72
RCM.E/5 - 3	<b>4042/5-3</b>	5	3	153	72
RCM.E/5 - 4	<b>4042/5-4</b>	5	4	153	72

**RIDUZIONI A CONO MORSE**  
MORSE TAPER ADAPTERS

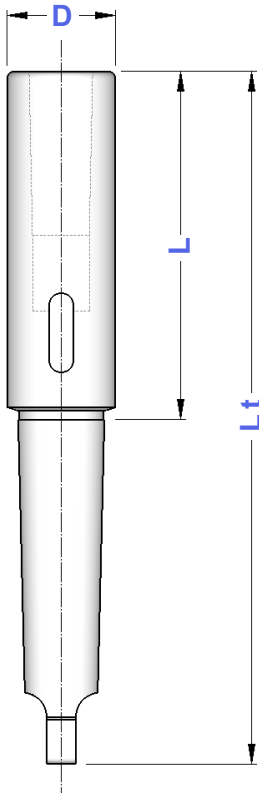
**DIN  
2185**



TIPO	Art.	Est.	Int.	L
RCM.C/1 -0	<b>4098/1-0</b>	1	0	80
RCM.C/2 -1	<b>4098/2-1</b>	2	1	92
RCM.C/3 -1	<b>4098/3-1</b>	3	1	99
RCM.C/3 -2	<b>4098/3-2</b>	3	2	112
RCM.C/4 -1	<b>4098/4-1</b>	4	1	124
RCM.C/4 -2	<b>4098/4-2</b>	4	2	124
RCM.C/4 -3	<b>4098/4-3</b>	4	3	140
RCM.C/5 -1	<b>4098/5-1</b>	5	1	156
RCM.C/5 -2	<b>4098/5-2</b>	5	2	156
RCM.C/5 -3	<b>4098/5-3</b>	5	3	156
RCM.C/5 -4	<b>4098/5-4</b>	5	4	171
RCM.C/6 -2	<b>4098/6-2</b>	6	2	218
RCM.C/6 -3	<b>4098/6-3</b>	6	3	218
RCM.C/6 -4	<b>4098/6-4</b>	6	4	218
RCM.C/6 -5	<b>4098/6-5</b>	6	5	218

**RIDUZIONI A CM PROLUNGATE**  
EXTENDED MORSE TAPER ADAPTERS

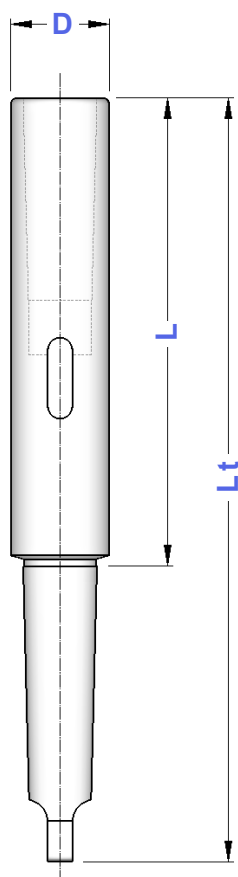
**DIN  
2187**



TIPO	Art.	Est.	Int.	L	Lt	D
RCM.L/1 -1	<b>4099/1-1</b>	1	1	83,0	145	20
RCM.L/1 -2	<b>4099/1-2</b>	1	2	98,0	160	30
RCM.L/2 -1	<b>4099/2-1</b>	2	1	85,0	160	20
RCM.L/2 -2	<b>4099/2-2</b>	2	2	100,0	175	30
RCM.L/2 -3	<b>4099/2-3</b>	2	3	121,0	196	36
RCM.L/3 -1	<b>4099/3-1</b>	3	1	81,0	175	20
RCM.L/3 -2	<b>4099/3-2</b>	3	2	100,0	194	30
RCM.L/3 -3	<b>4099/3-3</b>	3	3	121,0	215	36
RCM.L/3 -4	<b>4099/3-4</b>	3	4	146,0	240	48
RCM.L/4 -1	<b>4099/4-1</b>	4	1	82,5	200	20
RCM.L/4 -2	<b>4099/4-2</b>	4	2	97,5	215	30
RCM.L/4 -3	<b>4099/4-3</b>	4	3	122,5	240	36
RCM.L/4 -4	<b>4099/4-4</b>	4	4	147,5	265	48
RCM.L/4 -5	<b>4099/4-5</b>	4	5	182,5	300	63
RCM.L/5 -1	<b>4099/5-1</b>	5	1	82,5	232	20
RCM.L/5 -2	<b>4099/5-2</b>	5	2	97,5	247	30
RCM.L/5 -3	<b>4099/5-3</b>	5	3	118,5	268	36
RCM.L/5 -4	<b>4099/5-4</b>	5	4	150,5	300	48
RCM.L/5 -5	<b>4099/5-5</b>	5	5	185,5	335	63
RCM.L/5 -6	<b>4099/5-6</b>	5	6	247,0	396	82
RCM.L/6 -3	<b>4099/6-3</b>	6	3	120,0	330	36
RCM.L/6 -4	<b>4099/6-4</b>	6	4	145,0	335	48
RCM.L/6 -5	<b>4099/6-5</b>	6	5	180,0	390	63
RCM.L/6 -6	<b>4099/6-6</b>	6	6	241,0	451	82

## PROLUNGHE A CM EXTRALUNGHE

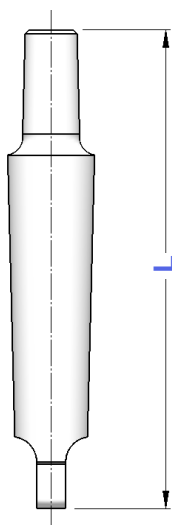
EXTRA-EXTENDED MORSE TAPER EXTENSIONS



TIPO	Art.	Est.	Int.	L	Lt	D
RXL 1 - 1/200	<b>8800</b>	1	1	138,0	200	20
RXL 1 - 1/250	<b>8801</b>	1	1	188,0	250	20
RXL 1 - 1/300	<b>8802</b>	1	1	238,0	300	20
RXL 1 - 1/350	<b>8803</b>	1	1	288,0	350	20
RXL 1 - 1/400	<b>8804</b>	1	1	338,0	400	20
RXL 1 - 1/450	<b>8805</b>	1	1	388,0	450	20
RXL 1 - 1/500	<b>8806</b>	1	1	438,0	500	20
RXL 2 - 2/200	<b>8807</b>	2	2	125,0	200	25
RXL 2 - 2/250	<b>8808</b>	2	2	175,0	250	25
RXL 2 - 2/300	<b>8809</b>	2	2	225,0	300	25
RXL 2 - 2/350	<b>8810</b>	2	2	275,0	350	25
RXL 2 - 2/400	<b>8811</b>	2	2	325,0	400	25
RXL 2 - 2/450	<b>8812</b>	2	2	375,0	450	25
RXL 2 - 2/500	<b>8813</b>	2	2	425,0	500	25
RXL 2 - 2/600	<b>8814</b>	2	2	525,0	600	25
RXL 3 - 3/250	<b>8815</b>	3	3	156,0	250	32
RXL 3 - 3/300	<b>8816</b>	3	3	206,0	300	32
RXL 3 - 3/350	<b>8817</b>	3	3	256,0	350	32
RXL 3 - 3/400	<b>8818</b>	3	3	306,0	400	32
RXL 3 - 3/450	<b>8819</b>	3	3	356,0	450	32
RXL 3 - 3/500	<b>8820</b>	3	3	406,0	500	32
RXL 3 - 3/600	<b>8821</b>	3	3	506,0	600	32
RXL 4 - 4/300	<b>8822</b>	4	4	182,5	300	40
RXL 4 - 4/350	<b>8823</b>	4	4	232,5	350	40
RXL 4 - 4/400	<b>8824</b>	4	4	282,5	400	40
RXL 4 - 4/450	<b>8825</b>	4	4	332,5	450	40
RXL 4 - 4/500	<b>8826</b>	4	4	382,5	500	40
RXL 4 - 4/600	<b>8827</b>	4	4	482,5	600	40

## RIDUZIONI CM PER DIN 238

MORSE TAPER ADAPTERS TO DIN 238



**DIN  
238**

TIPO	Art.	CM	"B"	L
RCM. B/1 - B10	<b>4096/1-B10</b>	1	10	83
RCM. B/1 - B12	<b>4096/1-B12</b>	1	12	89
RCM. B/1 - B16	<b>4096/1-B16</b>	1	16	99
RCM. B/1 - B18	<b>4096/1-B18</b>	1	18	99
RCM. B/2 - B10	<b>4096/2-B10</b>	2	10	105
RCM. B/2 - B12	<b>4096/2-B12</b>	2	12	106
RCM. B/2 - B16	<b>4096/2-B16</b>	2	16	112
RCM. B/2 - B18	<b>4096/2-B18</b>	2	18	119
RCM. B/2 - B22	<b>4096/2-B22</b>	2	22	130
RCM. B/3 - B12	<b>4096/3-B12</b>	3	12	125
RCM. B/3 - B16	<b>4096/3-B16</b>	3	16	134
RCM. B/3 - B18	<b>4096/3-B18</b>	3	18	140
RCM. B/3 - B22	<b>4096/3-B22</b>	3	22	147
RCM. B/4 - B12	<b>4096/4-B12</b>	4	12	152
RCM. B/4 - B16	<b>4096/4-B16</b>	4	16	156
RCM. B/4 - B18	<b>4096/4-B18</b>	4	18	164
RCM. B/4 - B22	<b>4096/4-B22</b>	4	22	176
RCM. B/4 - B24	<b>4096/4-B24</b>	4	24	186
RCM. B/5 - B16	<b>4096/5-B16</b>	5	16	190
RCM. B/5 - B18	<b>4096/5-B18</b>	5	18	204
RCM. B/5 - B22	<b>4096/5-B22</b>	5	22	213
RCM. B/5 - B24	<b>4096/5-B24</b>	5	24	221