

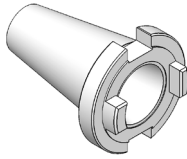
INDICE DELL' ATTACCO ISO - DIN 2080

INDEX OF NT - DIN 2080 SHANK

RIDUZIONI PASSANTI

DA ISO A ISO

THROUGH ISO TO ISO ADAPTERS



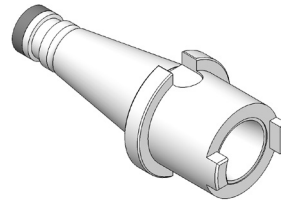
Programma completo a pag.

73

RIDUZIONI DA ISO

A ISO/TC/BT

ISO TO ISO/TC/BT ADAPTERS

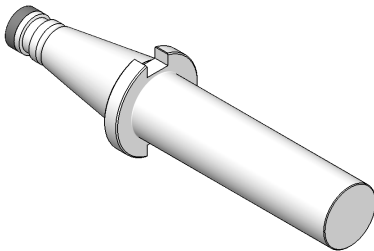


Programma completo a pag.

73

BARRE A STELO TENERO

BLANK BARS

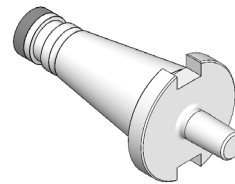


Programma completo a pag.

73

ATTACCHI PER MANDRINI PORTAPUNTA DIN 238

SHANKS FOR DRILL CHUCKS DIN 238 TYPE

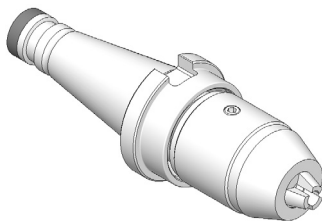


Programma completo a pag.

74

AUTOSERRANTI INTEGRALI

MONOLITHIC DRILL CHUCKS

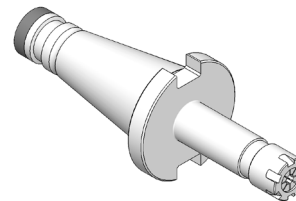


Programma completo a pag.

74

PORTAPINZA ER CON GHIERA MINI

ER-DIN 6499 COLLET CHUCKS
WITH MINI NUT

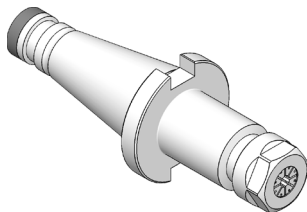


Programma completo a pag.

75

PORTAPINZA ER CON GHIERA ESAGONALE

ER-DIN 6499 COLLET CHUCKS
WITH HEXAGONAL NUT

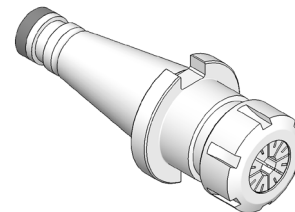


Programma completo a pag.

75

PORTAPINZA ER CON GHIERA STANDARD

ER-DIN 6499 COLLET CHUCKS
WITH STANDARD NUT

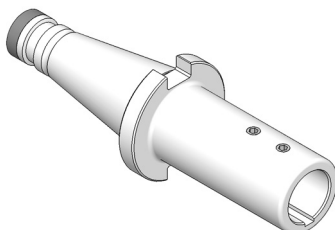


Programma completo da pag.

76

PORTA MANDRINI CON ATTACCO TRAPEZIO DIN 6327

AUTOMOTIVES SHANK HOLDERS
ACCORDING TO DIN 6327

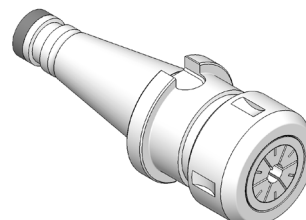


Programma completo a pag.

78

MANDRINI PER PINZE EOC DIN 6388

DIN 6388 COLLET CHUCKS



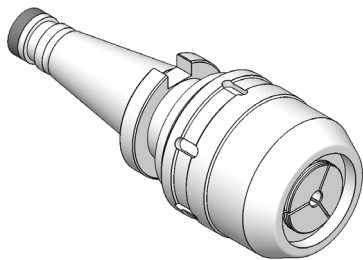
Programma completo a pag.

78

INDICE DELL' ATTACCO ISO - DIN 2080

INDEX OF NT - DIN 2080 SHANK

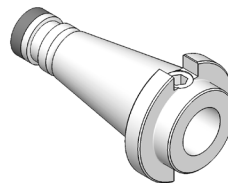
MANDRINI A FORTE SERRAGGIO HIGH GRIP CHUCKS



Programma completo a pag.

79

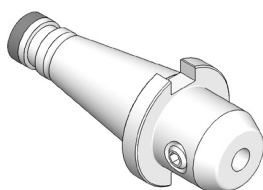
PORTAFRESE WELDON TIPO EXTRACORTO SHORT TYPE END MILL HOLDERS FOR DIN 1835-B SHANKS



Programma completo a pag.

80

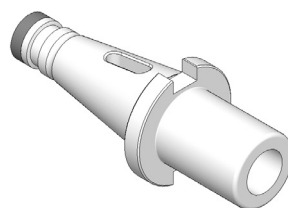
PORTAFRESE WELDON END MILL HOLDERS FOR DIN 1835-B SHANKS



Programma completo da pag.

80

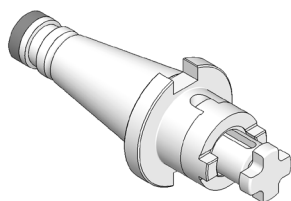
RIDUZIONI A CONO MORSE ADAPTERS TO MORSE TAPER



Programma completo da pag.

82

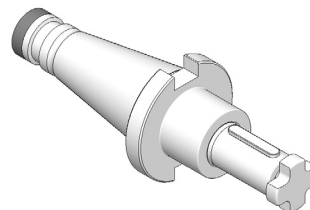
PORTAFRESE COMBINATI DIN 6358 SHELL END MILL HOLDERS



Programma completo a pag.

84

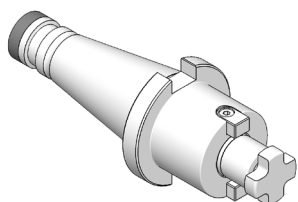
PORTAFRESE CON CHIAVETTA DI TRASCINAMENTO MILLING CUTTER HOLDERS WITH FEATHER KEY



Programma completo a pag.

84

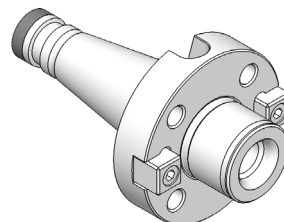
PORTAFRESE FISSI DIN 6357 FACE MILL HOLDERS



Programma completo a pag.

85

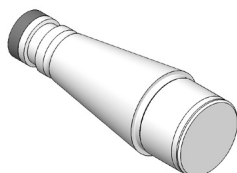
ATTACCHI PER FRESE AD INSERTI FACE MILL HOLDERS FOR FACE MILLING CUTTERS



Programma completo a pag.

86

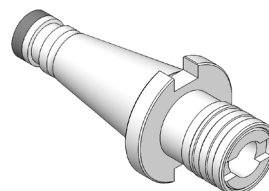
CENTRATORI PER FRESE AD INSERTI CENTERINGS FOR FACE MILLING CUTTERS



Programma completo a pag.

86

MASCHIATORI A CAMBIO RAPIDO QUICK CHANGE TAP HOLDERS

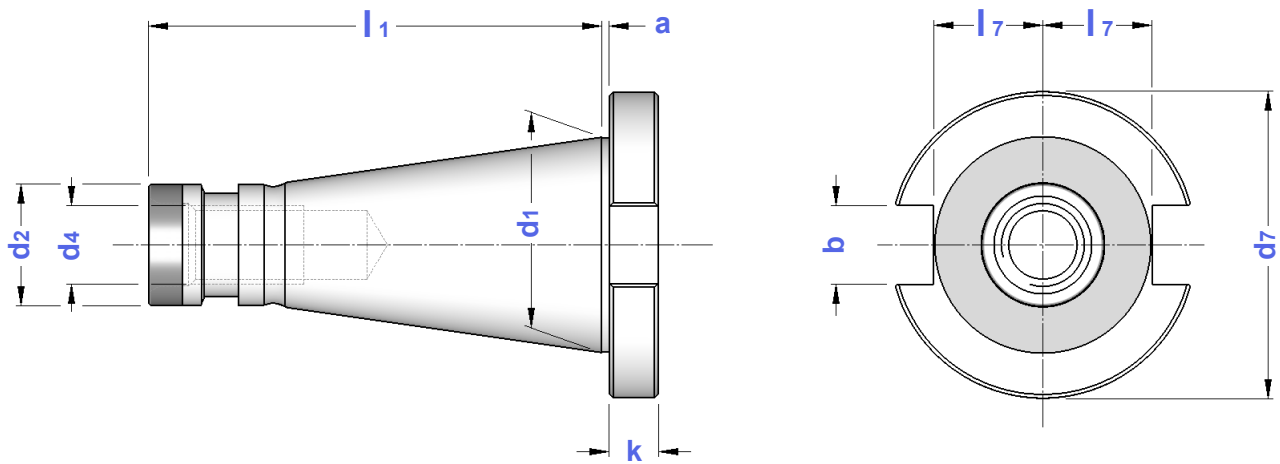


Programma completo a pag.

87

CARATTERISTICHE TECNICHE CONI ISO DIN 2080

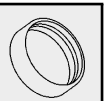
ISO DIN 2080 TAPERS STANDARD FEATURES



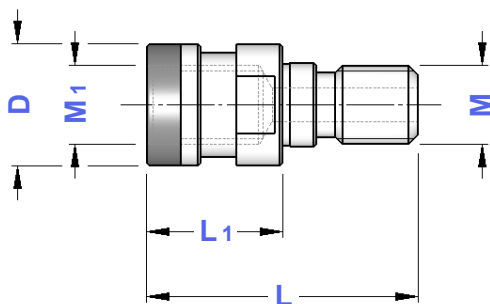
CONO	a	b	d1	d2	d4	d7	k	l1	l7	PRECISIONE
ISO 30 - DIN 2080	1,6	16,1	31,75	17,4	M 12	50,0	8	68,4	16,2	
ISO 40 - DIN 2080	1,6	16,1	44,45	25,3	M 16	63,0	10	93,4	22,5	
ISO 50 - DIN 2080	3,2	25,7	69,85	39,6	M 24	97,5	12	126,8	35,3	

CODOLI ADATTATORI - OTT SYSTEM

OTT SYSTEM - ADAPTER STUD BOLTS



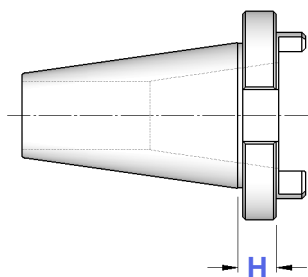
TIPO	Art.	M	M1	D	L1	
OTT M16/L 53 - TC 40	3487	M16	M16	25,3	25	7461
OTT M16/L 56 - BT 40	3466	M16	M16	25,3	28	7461
OTT M24/L 65 - CONO 50	0087	M24	M24	39,6	25	—



**DIN
2080**


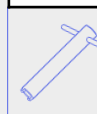
RIDUZIONI PASSANTI DA ISO A ISO
PASSER-BY ISO TO ISO ADAPTERS

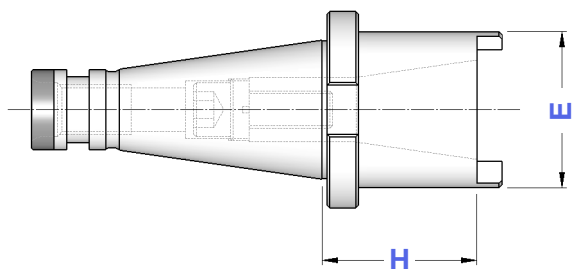
TIPO	Art.	H
ISO 40 - IP 30	8828	12
ISO 50 - IP 40	8829	16



**DIN
2080**

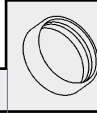
RIDUZIONI DA ISO A ISO/TC/BT
ISO TO ISO/TC/BT ADAPTERS

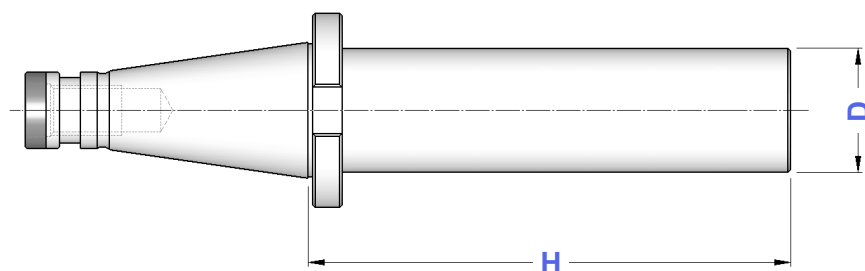
TIPO	Art.	H	E		DIN 2080	BT DIN 69871	
ISO 40 - ISO 30/TC 30/BT 30	4235	50	50	7423	7410	0177	4570
ISO 50 - ISO 40/TC 40/BT 40	4237	63	68	7424	7411	0179	4571
ISO 50 - ISO 50/TC 50/BT 50	8536	100	100	7426	7417	0254	4780

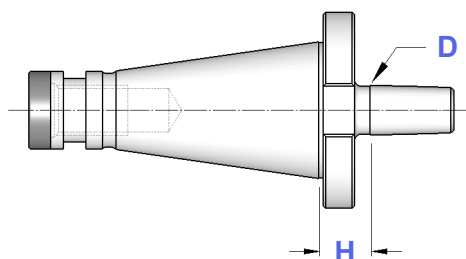


**DIN
2080**

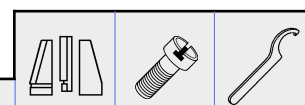
BARRE A STELO TENERO
BLANK BARS

TIPO	Art.	
ISO 40 - D. 40/H 160	4374	7461
ISO 40 - D. 50/H 250	4377	7461
ISO 40 - D. 63/H 160	4378	7461
ISO 40 - D. 63/H 250	4379	7461
ISO 50 - D. 50/H 300	4383	7462
ISO 50 - D. 63/H 300	4385	7462
ISO 50 - D. 80/H 300	4387	7462

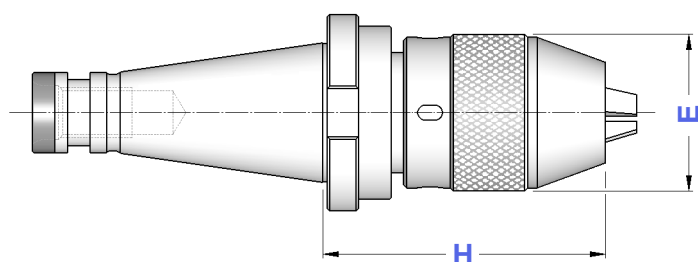


**DIN
2080****ATTACCHI PER MANDRINI PORTAPUNTA DIN 238**
SHANKS FOR DRILL CHUCKS DIN 238 TYPE

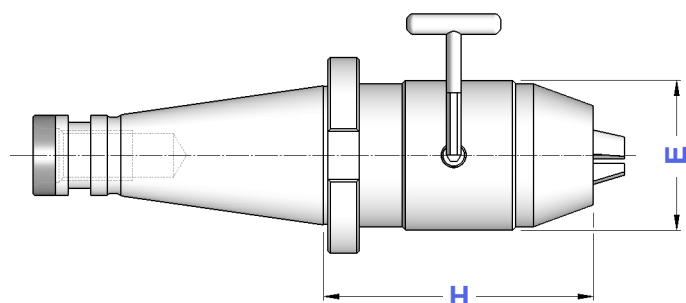
TIPO	Art.	D	H	
ISO 30 - B12	3858	12,065	15	—
ISO 30 - B16	3991	15,733	15	—
ISO 40 - B12	3859	12,065	17	7461
ISO 40 - B16	3860	15,733	17	7461
ISO 40 - B18	3861	17,780	17	7461
ISO 50 - B16	3992	15,733	20	7462
ISO 50 - B18	3993	17,780	20	7462

**DIN
2080****MANDRINI AUTOSERRANTI INTEGRALI**
ROTAZIONE DESTRA
MONOLITHIC DRILL CHUCKS - RIGHT SPIN

TIPO	Art.	CAPACITA'	E	H			
ISO 30 - DC 13	8578	1 ÷ 13	50	100	9016	9021	2370
ISO 40 - DC 13	4331	1 ÷ 13	50	95	9016	9021	2370
ISO 40 - DC 16	4332	3 ÷ 16	57	105	9017	9023	2371
ISO 50 - DC 13	4333	1 ÷ 13	50	80	9016	9021	2370
ISO 50 - DC 16	4334	3 ÷ 16	57	100	9017	9023	2371

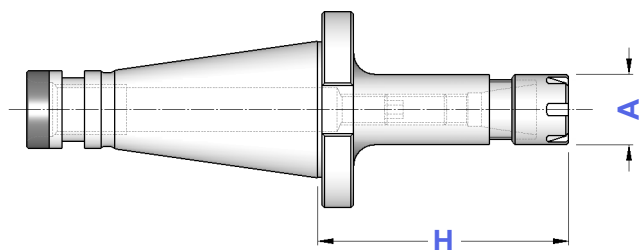
Precisione di rotazione: **0,05 mm**
Runout accuracy: **0,05 mm****DIN
2080****MANDRINI AUTOSERRANTI INTEGRALI**
ROTAZIONE DESTRA E SINISTRA
MONOLITHIC DRILL CHUCKS - RIGHT & LEFT SPIN

TIPO	Art.	CAPACITA'	E	H	
ISO 40 - DCU 13	8579	1 ÷ 13	50	90	2372
ISO 40 - DCU 16	8580	3 ÷ 16	57	100	
ISO 50 - DCU 13	8581	1 ÷ 13	50	87	2372
ISO 50 - DCU 16	8582	3 ÷ 16	57	100	

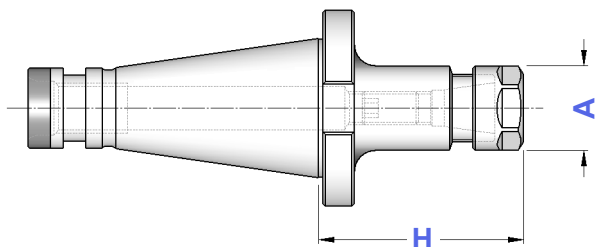
Precisione di rotazione: **0,05 mm**
Runout accuracy: **0,05 mm**

**DIN
2080****PORTAPINZE ER - GHIERA MINI**
ER - DIN 6499 COLLET CHUCKS WITH MINI NUT

TIPO	Art.	H	A	CAPACITA'				
ISO 30 - ER16 GM	2957	70	22	1 ÷ 10	0183	1229	5719	0364
ISO 40 - ER16 GM	2959	80	22	1 ÷ 10	0186	1229	5719	0364
ISO 40 - ER20 GM	2960	90	28	1 ÷ 13	0188	1230	5720	0787
ISO 40 - ER25 GM	2961	100	35	1 ÷ 16	0190	1231	5721	0996

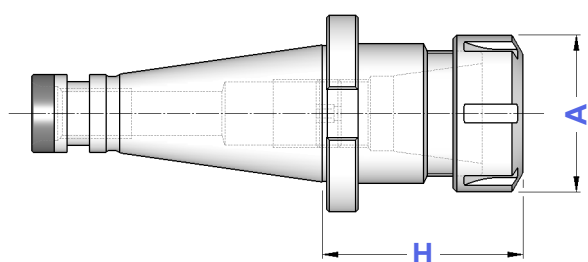
**DIN
2080****PORTAPINZE ER - GHIERA ESAGONALE**
ER - DIN 6499 COLLET CHUCKS WITH HEXAGONAL NUT

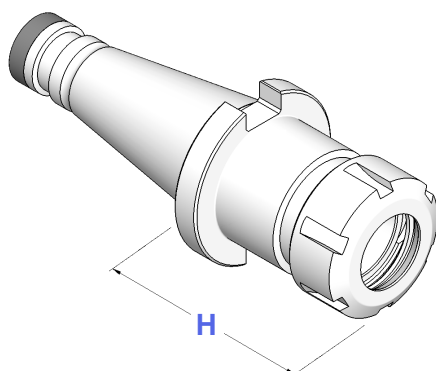
TIPO	Art.	A	CAPACITA'				
ISO 30 - ER16 GE/H 50	8332	28	1 ÷ 10	0183	1214	2906	0364
ISO 30 - ER20 GE/H 50	8333	34	1 ÷ 13	0183	1215	2907	0787
ISO 40 - ER16 GE/H 50	8334	28	1 ÷ 10	0186	1214	2906	0364
ISO 40 - ER16 GE/H100	8335						
ISO 40 - ER20 GE/H 50	8336	34	1 ÷ 13	0188	1215	2907	0787
ISO 40 - ER20 GE/H100	8337						



**DIN
2080****PORTAPINZE ER - GHIERA STANDARD**
ER - DIN 6499 COLLET CHUCKS WITH STANDARD NUT

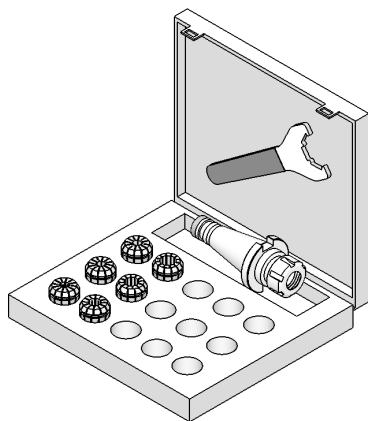
TIPO	Art.	A	CAPACITA'				
ISO 30 - ER 16/H 50	2944	32	1 ÷ 10	0183	4993	3698	0364
ISO 30 - ER 20/H 50	2945	35	1 ÷ 13	0183	4994	3699	0787
ISO 30 - ER 25/H 40	2927	42	1 ÷ 16	0190	4995	3669	0996
ISO 30 - ER 25/H 75	2946						
ISO 30 - ER 32/H 50	2928	50	2 ÷ 20	0191	4996	3670	0988
ISO 30 - ER 32/H 70	3986						
ISO 30 - ER 32/H 100	3988						
ISO 30 - ER 40/H 75	3543	63	3 ÷ 30	0191	4997	3671	0821
ISO 30 - ER 40/H 100	3990						
ISO 40 - ER 16/H 50	2949	32	1 ÷ 10	0186	4993	3698	0364
ISO 40 - ER 16/H 100	3941						
ISO 40 - ER 20/H 50	2950	35	1 ÷ 13	0188	4994	3699	0787
ISO 40 - ER 20/H 100	2796						
ISO 40 - ER 25/H 50	2941	42	1 ÷ 16	0190	4995	3669	0996
ISO 40 - ER 25/H 100	2685						
ISO 40 - ER 32/H 50	2929	50	2 ÷ 20	0191	4996	3670	0988
ISO 40 - ER 32/H 70	2951						
ISO 40 - ER 32/H 100	2464						
ISO 40 - ER 32/H 130	2827						
ISO 40 - ER 32/H 160	2952						
ISO 40 - ER 40/H 50	2930	63	3 ÷ 30	0195	4997	3671	0821
ISO 40 - ER 40/H 70	2462						
ISO 40 - ER 40/H 100	2992						
ISO 40 - ER 50/H 100	2953	78	6 ÷ 34	0195	4998	3668	4055
ISO 50 - ER 25/H 65	2830	42	1 ÷ 16	0190	4995	3669	0996
ISO 50 - ER 25/H 100	2831						
ISO 50 - ER 25/H 140	2885						
ISO 50 - ER 32/H 70	2954	50	2 ÷ 20	0191	4996	3670	0988
ISO 50 - ER 32/H 100	2955						
ISO 50 - ER 32/H 140	2832						
ISO 50 - ER 40/H 75	2931	63	3 ÷ 30	0195	4997	3671	0821
ISO 50 - ER 40/H 100	2458						
ISO 50 - ER 40/H 140	2833						
ISO 50 - ER 50/H 70	2932	78	6 ÷ 34	0195	4998	3668	4055

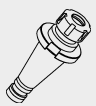



**Dove trovare questi Articoli
nel Catalogo Generale***Where to find those Items
on General Catalogue***Pinze ER - da pag. 8**
ER Collets - from page 8**Ghiere ER - da pag. 20**
ER Nuts - from page 20**Chiavi ER - pag. 25**
ER Wrenches - page 25



CASSETTE CON SERIE RIDOTTA DI PINZE ER, MANDRINO E CHIAVE

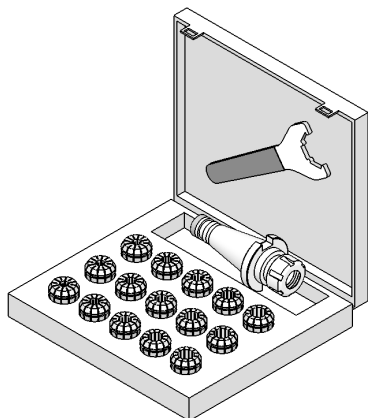
EQUIPMENT BOXES WITH REDUCED SET OF ER COLLETS

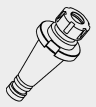





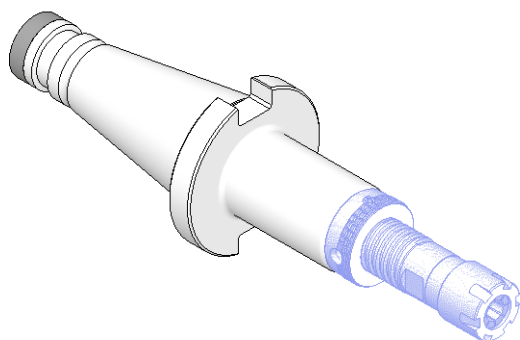
TIPO	Art.				
KIT Rid ISO 30/H 40 - ER 25	7516	2927	3695	3669	0996: $\varnothing 4-6-8-10-12-16$
KIT Rid ISO 30/H 50 - ER 32	7517	2928	3695	3670	0988: $\varnothing 4-6-8-10-12-16-20$
KIT Rid ISO 40/H 50 - ER 25	7518	2941	3695	3669	0996: $\varnothing 4-6-8-10-12-16$
KIT Rid ISO 40/H 50 - ER 32	7519	2929	3695	3670	0988: $\varnothing 4-6-8-10-12-16-20$
KIT Rid ISO 40/H 70 - ER 32	7520	2951	3695	3670	0988: $\varnothing 4-6-8-10-12-16-20$
KIT Rid ISO 40/H 50 - ER 40	7521	2930	3695	3671	0821: $\varnothing 4-6-8-10-12-16-20-25$
KIT Rid ISO 50/H 70 - ER 32	7522	2954	3695	3670	0988: $\varnothing 4-6-8-10-12-16-20$
KIT Rid ISO 50/H 75 - ER 40	7523	2931	3695	3671	0821: $\varnothing 4-6-8-10-12-16-20-25$

CASSETTE CON SERIE COMPLETA DI PINZE ER, MANDRINO E CHIAVE

EQUIPMENT BOXES WITH COMPLETE SET OF ER COLLETS



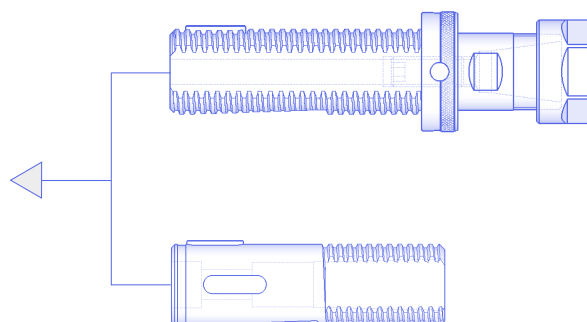
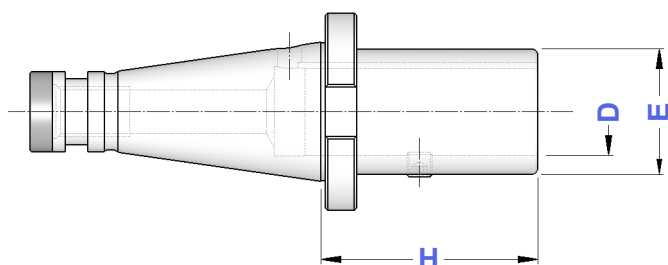
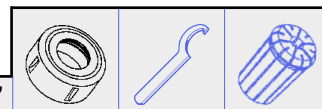
TIPO	Art.				
KIT ISO 30/H 40 - ER25	7500	2927	3695	3669	0996: $\varnothing 2 \div 16$ (15 Pinze)
KIT ISO 30/H 50 - ER32	7501	2928	3695	3670	0988: $\varnothing 3 \div 20$ (18 Pinze)
KIT ISO 40/H 50 - ER25	7502	2941	3695	3669	0996: $\varnothing 2 \div 16$ (15 Pinze)
KIT ISO 40/H 50 - ER32	7503	2929	3695	3670	0988: $\varnothing 3 \div 20$ (18 Pinze)
KIT ISO 40/H 70 - ER32	7504	2951	3695	3670	0988: $\varnothing 3 \div 20$ (18 Pinze)
KIT ISO 40/H 50 - ER40	7505	2930	3695	3671	0821: $\varnothing 4 \div 26$ (23 Pinze)
KIT ISO 50/H 70 - ER32	7506	2954	3695	3670	0988: $\varnothing 3 \div 20$ (18 Pinze)
KIT ISO 50/H 75 - ER40	7507	2931	3695	3671	0821: $\varnothing 4 \div 26$ (23 Pinze)

**DIN
2080****PORTA MANDRINI CON ATTACCO TRAPEZIO DIN 6327**
AUTOMOTIVES SHANK HOLDERS ACCORDING TO DIN 6327

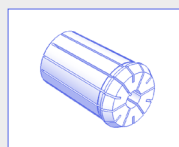
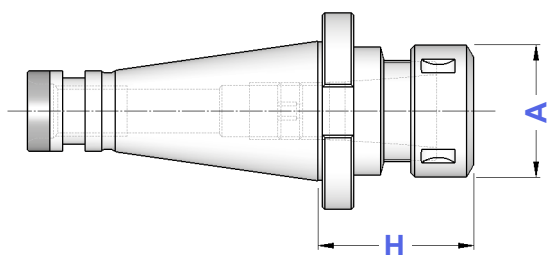
TIPO	Art.	D	H	E	
ISO 40 - TR 28	4230	28	100	40	0021
ISO 40 - TR 36	4231	36	120	50	0021
ISO 50 - TR 28	4232	28	100	40	0021
ISO 50 - TR 36	4233	36	100	50	0021

Potete trovare il programma DIN 6327
da pagina 46 a pagina 49 del Catalogo Generale

You can find DIN 6327 program on General
Catalogue from page 46 to page 49

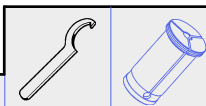
**DIN
2080****MANDRINI PER PINZE EOC DIN 6388**
DIN 6388 COLLET CHUCKS

TIPO	Art.	H	A	CAPACITA'			
ISO 40 - EOC 16	4170	55	43	2 ÷ 16	4067	2908	0768
ISO 40 - EOC 25	3966	70	60	2 ÷ 25	4068	2909	0769
ISO 40 - EOC 32	3967	80	72	3 ÷ 32	4069	2910	0770
ISO 50 - EOC 25	3968	70	60	2 ÷ 25	4068	2909	0769
ISO 50 - EOC 32	3969	80	72	3 ÷ 32	4069	2910	0770

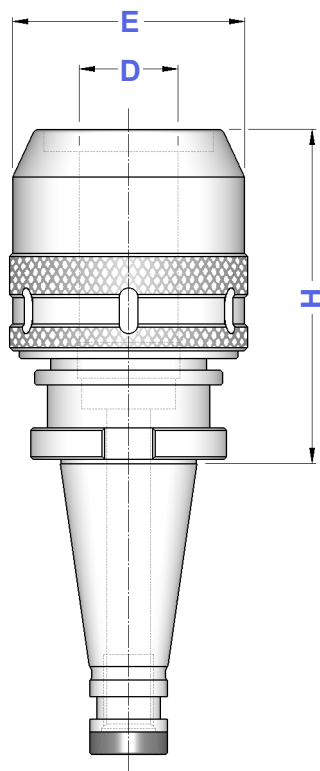


Pinze, ghiera e chiavi
EOC - DIN 6388
si trovano da pagina 28
del Catalogo Generale.

Collets, nuts and wrenches
EOC - DIN 6388 type
you can find on General
Catalogue from page 28

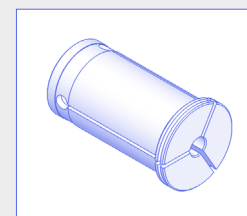
**DIN
2080****MANDRINI A FORTE SERRAGGIO**
HIGH GRIP CHUCKS

TIPO	Art.	H	D	CAPACITA'	E		
ISO 40 - PC 32	2903	78	32	3 ÷ 32	74,0	2910	0810
ISO 50 - PC 32	2904	85	32	3 ÷ 32	74,0	2910	0810



I Mandrini a Forte Serraggio vengono forniti completi dell'apposita chiave

High grip Chucks are supplied complete with suitable wrench


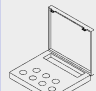

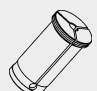


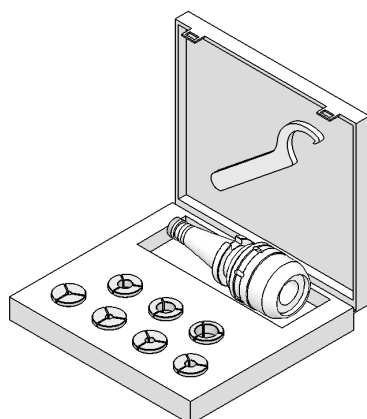
Pinze cilindriche di riduzione per Mandrini a Forte Serraggio Pag. 31 del Catalogo Generale

Reduction cylindrical collets for High Grip Chucks on General Catalogue page 31

**CASSETTE CON MANDRINO
CHIAVE E PINZE**

EQUIPMENT BOXES WITH COLLET CHUCK
WRENCH AND COLLETS

TIPO	Art.				
KIT ISO 40 - PC 32 / H 78	7541	2903	3695	2910	0810: ø 6 - 8 - 10 - 12 - 16 - 20 - 25
KIT ISO 50 - PC 32 / H 85	7542	2904	3695	2910	0810: ø 6 - 8 - 10 - 12 - 16 - 20 - 25

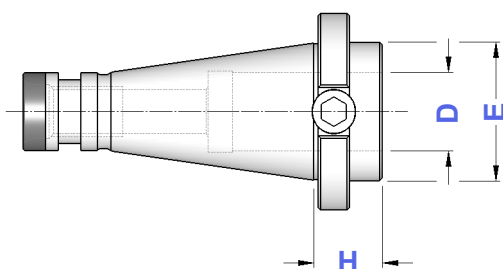


**DIN
2080**

PORTAFRESE WELDON TIPO EXTRACORTO
SHORT TYPE END MILL HOLDERS FOR DIN 1835-B SHANKS



TIPO	Art.	D	H	E	
ISO 40 - WE 16/H 22	3090	16	22	44	0068
ISO 40 - WE 20/H 22	3091	20	22	44	0070
ISO 40 - WE 25/H 22	3092	25	22	44	0073
ISO 40 - WE 32/H 40	3109	32	40	44	0074
ISO 50 - WE 16/H 20	3093	16	20	66	4974
ISO 50 - WE 20/H 20	3094	20	20	66	4975
ISO 50 - WE 25/H 20	3095	25	20	66	4975
ISO 50 - WE 32/H 20	3096	32	20	66	4975



**DIN
2080**

PORTAFRESE WELDON
END MILL HOLDERS FOR DIN 1835-B SHANKS



TIPO	Art.	D	H	E	Fig.	
ISO 30 - WE 6/H 40	4442	6	40	25	1	4970
ISO 30 - WE 8/H 40	4443	8	40	28	1	4971
ISO 30 - WE 10/H 40	4444	10	40	35	1	4972
ISO 30 - WE 12/H 40	4445	12	40	42	1	4973
ISO 30 - WE 16/H 50	4447	16	50	48	1	4974
ISO 30 - WE 20/H 63	4449	20	63	52	1	4975
ISO 30 - WE 25/H 75	4450	25	75	65	2	4976
ISO 40 - WE 6/H 50	3647	6	50	25	1	4970
ISO 40 - WE 8/H 50	3648	8	50	28	1	4971
ISO 40 - WE 10/H 50	3649	10	50	35	1	4972
ISO 40 - WE 12/H 50	3650	12	50	42	1	4973
ISO 40 - WE 14/H 50	3610	14	50	44	1	4973
ISO 40 - WE 16/H 63	3651	16	63	48	1	4974
ISO 40 - WE 18/H 63	3611	18	63	50	1	4974
ISO 40 - WE 20/H 63	3652	20	63	52	1	4975
ISO 40 - WE 25/H 90	3653	25	90	65	2	4976
ISO 40 - WE 32/H 90	3654	32	90	72	2	4977
ISO 40 - WE 40/H 90	3312	40	90	80	2	4977
ISO 50 - WE 6/H 50	3655	6	50	25	1	4970
ISO 50 - WE 8/H 50	3656	8	50	28	1	4971
ISO 50 - WE 10/H 63	3657	10	63	35	1	4972
ISO 50 - WE 12/H 63	3658	12	63	42	1	4973
ISO 50 - WE 14/H 63	3340	14	63	44	1	4973
ISO 50 - WE 16/H 63	3659	16	63	48	1	4974
ISO 50 - WE 18/H 63	3341	18	63	50	1	4974
ISO 50 - WE 20/H 63	3660	20	63	52	1	4975
ISO 50 - WE 25/H 80	3661	25	80	65	2	4976
ISO 50 - WE 32/H 85	3662	32	85	72	2	4977
ISO 50 - WE 40/H 95	3663	40	95	78	2	4977
ISO 50 - WE 50/H110	3664	50	110	97	2	4978

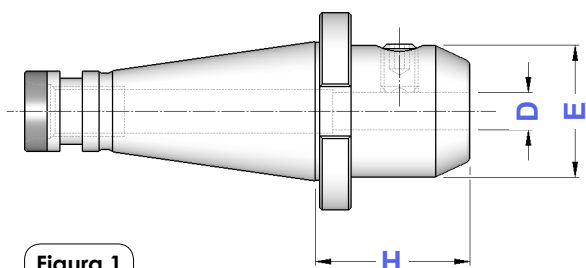


Figura 1

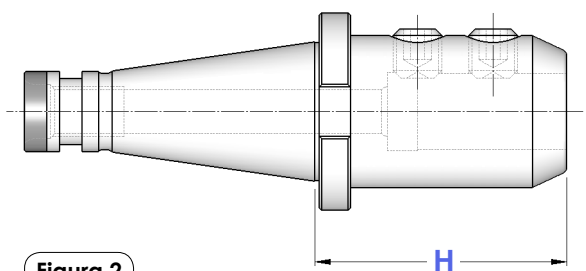


Figura 2



TIPO	Art.	D	H	E	Fig.	G1	G2
ISO 40 - WN 6/H 50	4458	6	50	25	1	0233	4970
ISO 40 - WN 8/H 50	4459	8	50	28	1	0235	4971
ISO 40 - WN 10/H 50	4460	10	50	35	1	0238	4972
ISO 40 - WN 12/H 50	4461	12	50	42	1	0240	4973
ISO 40 - WN 14/H 50	4462	14	50	44	1	0240	4973
ISO 40 - WN 16/H 63	4463	16	63	48	1	0245	4974
ISO 40 - WN 18/H 63	4464	18	63	50	1	0245	4974
ISO 40 - WN 20/H 63	4465	20	63	52	1	0245	4975
ISO 40 - WN 25/H 90	4466	25	90	65	2	0212	4976
ISO 40 - WN 32/H 90	4467	32	90	72	2	0212	4977
ISO 50 - WN 6/H 50	4468	6	50	25	1	0233	4970
ISO 50 - WN 8/H 50	4469	8	50	28	1	0235	4971
ISO 50 - WN 10/H 63	4470	10	63	35	1	0238	4972
ISO 50 - WN 12/H 63	4471	12	63	42	1	0240	4973
ISO 50 - WN 14/H 63	4472	14	63	44	1	0240	4973
ISO 50 - WN 16/H 63	4473	16	63	48	1	0245	4974
ISO 50 - WN 18/H 63	4474	18	63	50	1	0245	4974
ISO 50 - WN 20/H 63	4475	20	63	52	1	0245	4975
ISO 50 - WN 25/H 80	4476	25	80	65	2	0247	4976
ISO 50 - WN 32/H 85	4477	32	85	72	2	0247	4977
ISO 50 - WN 40/H 95	4478	40	95	78	2	0247	4977

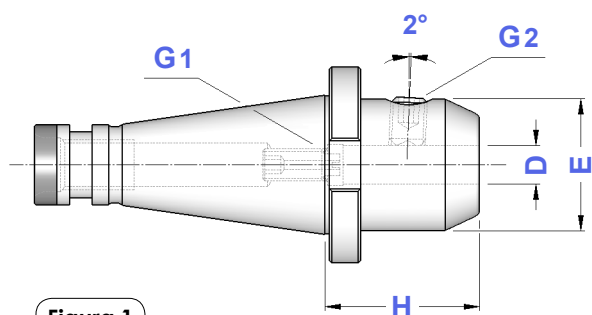


Figura 1

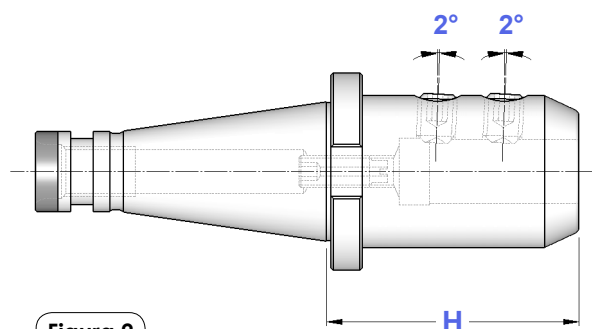
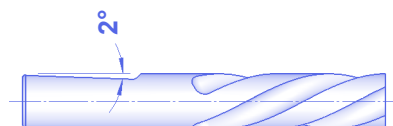
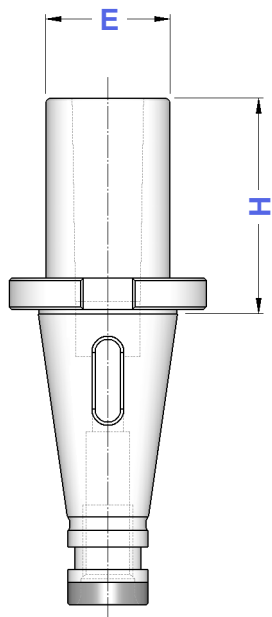
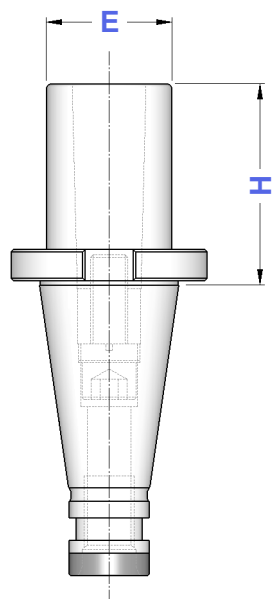
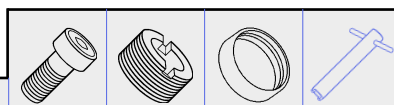


Figura 2



**DIN
2080****RIDUZIONI A CONO MORSE PER PUNTE**
MORSE TAPER ADAPTERS FOR TWIST DRILLS DIN 228 FORM B SHANK

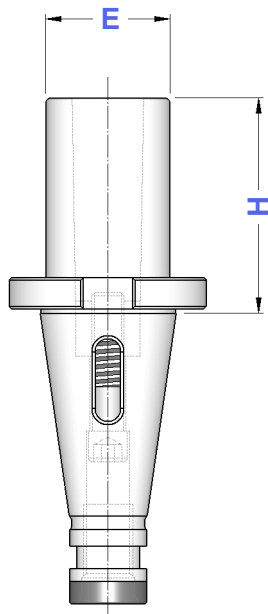
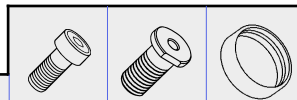
TIPO	Art.	CM	H	E	
ISO 30 - CM 1 PUNTE	8517	1	50	25	—
ISO 30 - CM 2 PUNTE	3873	2	50	32	—
ISO 30 - CM 3 PUNTE	3874	3	70	40	—
ISO 40 - CM 1 PUNTE	8518	1	50	25	7461
ISO 40 - CM 2 PUNTE	8520	2	50	32	7461
ISO 40 - CM 3 PUNTE	3614	3	65	40	7461
ISO 40 - CM 4 PUNTE	3615	4	95	48	7461
ISO 50 - CM 1 PUNTE	8523	1	45	25	7462
ISO 50 - CM 2 PUNTE	8525	2	60	32	7462
ISO 50 - CM 3 PUNTE	8527	3	65	40	7462
ISO 50 - CM 4 PUNTE	3619	4	65	48	7462
ISO 50 - CM 5 PUNTE	3620	5	105	63	7462




**DIN
2080****RIDUZIONI A CONO MORSE PER FRESE**
MT ADAPTERS FOR MILLING CUTTERS DIN 228 FORM A SHANK

TIPO	Art.	CM	H	E				
ISO 30 - CM 2 FRESE	3876	2	50	32	7448	7422	—	4569
ISO 30 - CM 3 FRESE	3877	3	80	40	7402	7423	—	4570
ISO 40 - CM 2 FRESE	3622	2	50	32	7448	7422	7461	4569
ISO 40 - CM 3 FRESE	3623	3	65	40	7403	7423	7461	4570
ISO 40 - CM 4 FRESE	3624	4	95	48	7404	7424	7461	4571
ISO 50 - CM 2 FRESE	3626	2	60	32	7448	7422	7462	4569
ISO 50 - CM 3 FRESE	3627	3	65	40	7403	7423	7462	4570
ISO 50 - CM 4 FRESE	3628	4	65	48	7407	7424	7462	4571
ISO 50 - CM 5 FRESE	3629	5	120	63	7408	7425	7462	4572

**DIN
2080****RIDUZIONI A CONO MORSE PUNTE + FRESE
COMBinate**

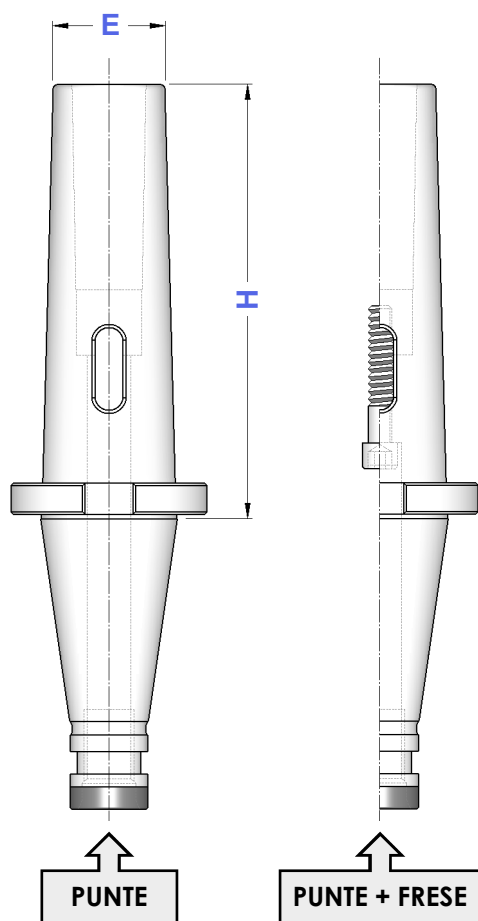
COMBI MORSE TAPER ADAPTERS: TWIST DRILLS + MILLING CUTTERS






TIPO	Art.	CM	H	E			
ISO 30 - CM 1 P+F	3872	1	50	25	7400	—	—
ISO 30 - CM 2 P+F	8531	2	50	32	7400	0276	—
ISO 40 - CM 1 P+F	3612	1	50	25	7400	—	7461
ISO 40 - CM 2 P+F	3613	2	50	32	7401	—	7461
ISO 40 - CM 3 P+F	8532	3	65	40	7400	0130	7461
ISO 50 - CM 1 P+F	3616	1	45	25	7400	—	7462
ISO 50 - CM 2 P+F	3617	2	60	32	7405	—	7462
ISO 50 - CM 3 P+F	3618	3	65	40	7406	—	7462
ISO 50 - CM 4 P+F	8533	4	65	48	7409	—	7462
ISO 50 - CM 5 P+F	8534	5	105	63	7406	0131	7462

**DIN
2080****RIDUZIONI A CONO MORSE PER PUNTE E PUNTE + FRESE
TIPO PROLUNGATO**

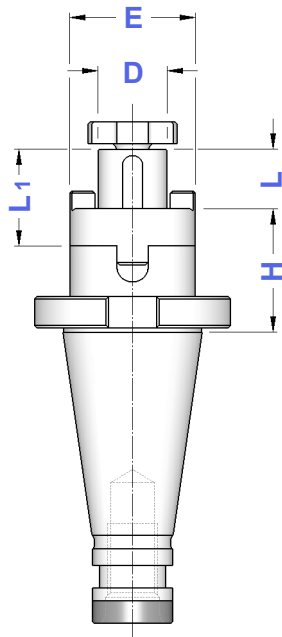
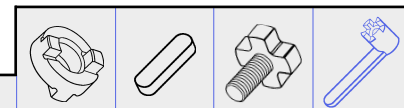
EXTENDED MORSE TAPER ADAPTERS: TWIST DRILLS + MILLING CUTTERS



TIPO	PUNTE + FRESE		CM	H	E			
	Art.	Art.						
ISO 40 - CM 1	8519	3544	1	115	18	7400	—	7461
ISO 40 - CM 2	8521	3545	2	125	25	7401	—	7461
ISO 40 - CM 3	8522	3546	3	140	33	7400	0130	7461
ISO 40 - CM 4	3548	—	4	150	40	—	—	7461
ISO 50 - CM 1	8524	3785	1	120	18	0035	—	7462
ISO 50 - CM 2	8526	3786	2	140	25	0038	—	7462
ISO 50 - CM 3	8528	3787	3	150	33	0040	—	7462
ISO 50 - CM 4	8529	3788	4	180	40	0042	—	7462
ISO 50 - CM 5	8530	3789	5	220	55	0055	0131	7462

DIN 2080

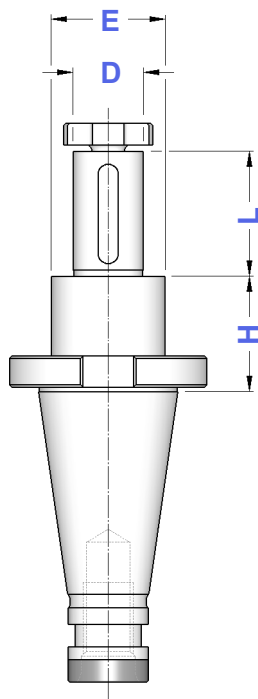
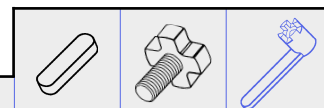
PORTAFRESE COMBINATI DIN 6358 SHELL END MILL HOLDERS



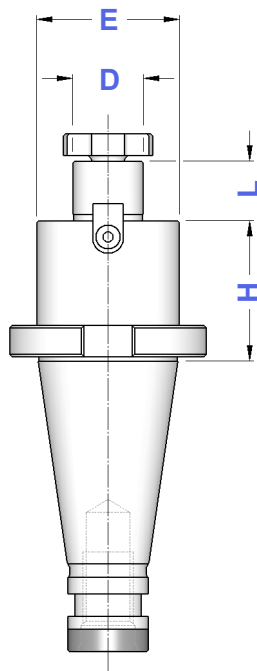
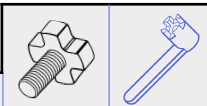
TIPO	Art.	D	L1	L	E				
ISO 30-D.16 C/H 35	3878	16	27	17	32	4090	0115	4985	4562
ISO 30-D.22 C/H 35	3879	22	31	19	40	4091	0116	4986	4563
ISO 30-D.27 C/H 35	3880	27	33	21	48	4092	0122	4987	4564
ISO 30-D.32 C/H 50	3881	32	38	24	58	4093	0125	4988	4565
ISO 40-D.16 C/H 52	3817	16	27	17	32	4090	0115	4985	4562
ISO 40-D.16 C/H 90	4189								
ISO 40-D.22 C/H 52	3818	22	31	19	40	4091	0116	4986	4563
ISO 40-D.22 C/H 90	4190								
ISO 40-D.27 C/H 52	3819	27	33	21	48	4092	0122	4987	4564
ISO 40-D.27 C/H 90	4191								
ISO 40-D.32 C/H 52	3820	32	38	24	58	4093	0125	4988	4565
ISO 40-D.32 C/H 100	4192								
ISO 40-D.40 C/H 52	3821	40	41	27	70	4094	0133	4989	4566
ISO 50-D.16 C/H 55	3822	16	27	17	32	4090	0115	4985	4562
ISO 50-D.16 C/H 100	4194								
ISO 50-D.22 C/H 55	3823	22	31	19	40	4091	0116	4986	4563
ISO 50-D.22 C/H 100	4195								
ISO 50-D.27 C/H 55	3824	27	33	21	48	4092	0122	4987	4564
ISO 50-D.27 C/H 100	4196								
ISO 50-D.32 C/H 55	3825	32	38	24	58	4093	0125	4988	4565
ISO 50-D.32 C/H 100	4197								
ISO 50-D.40 C/H 55	3826	40	41	27	70	4094	0133	4989	4566
ISO 50-D.40 C/H 100	4198								
ISO 50-D.50 C/H 55	3827	50	46	30	90	4095	0137	4990	4567

DIN 2080

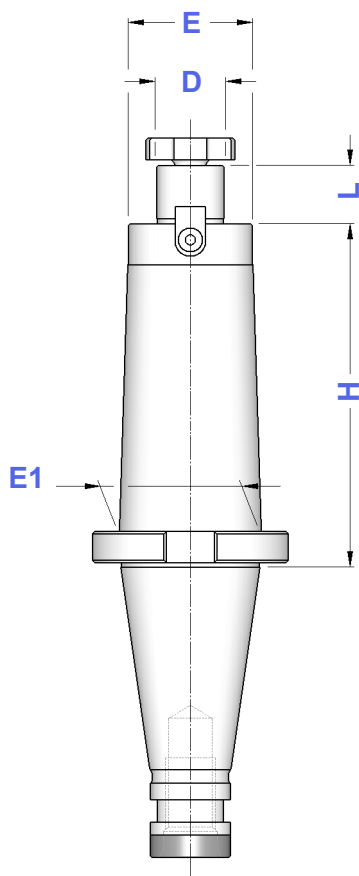
PORTAFRESE CON CHIAVETTA DI TRASCINAMENTO MILLING CUTTER HOLDERS WITH FEATHER KEY



TIPO	Art.	D	H	L	E			
ISO 30 - D.16 CHT	0134	16	35	30	28	0147	4985	4562
ISO 30 - D.22 CHT	0135	22	35	40	36	0148	4986	4563
ISO 30 - D.27 CHT	0136	27	35	60	43	0149	4987	4564
ISO 40 - D.16 CHT	4205	16	37	30	28	0147	4985	4562
ISO 40 - D.22 CHT	4207	22	37	40	36	0148	4986	4563
ISO 40 - D.27 CHT	4209	27	37	60	43	0149	4987	4564
ISO 40 - D.32 CHT	4211	32	37	60	48	0150	4988	4565
ISO 40 - D.40 CHT	4193	40	37	60	56	0151	4989	4566
ISO 50 - D.22 CHT	4216	22	40	40	36	0148	4986	4563
ISO 50 - D.27 CHT	4218	27	40	60	43	0149	4987	4564
ISO 50 - D.32 CHT	4220	32	40	60	48	0150	4988	4565
ISO 50 - D.40 CHT	4222	40	40	60	56	0151	4989	4566
ISO 50 - D.50 CHT	4214	50	40	60	70	0152	4990	4567



TIPO	Art.	D	L	E	E1		
ISO 30 - D.13 FISSO / H 35	5498	13	12	28	28	0482	—
ISO 30 - D.16 FISSO / H 35	4200	16	17	38	38	4985	4562
ISO 30 - D.22 FISSO / H 35	4201	22	19	48	48	4986	4563
ISO 30 - D.27 FISSO / H 35	4202	27	21	58	58	4987	4564
ISO 40 - D.13 FISSO / H 45	5499	13	12	28	28	0482	—
ISO 40 - D.16 FISSO / H 45	5500	16	17	38	38	4985	4562
ISO 40 - D.16 FISSO / H 120	5501			32	39		
ISO 40 - D.22 FISSO / H 45	5502	22	19	48	48	4986	4563
ISO 40 - D.22 FISSO / H 120	5503			40	49		
ISO 40 - D.27 FISSO / H 45	5504	27	21	58	58	4987	4564
ISO 40 - D.27 FISSO / H 120	5505			48	60		
ISO 40 - D.32 FISSO / H 50	5506	32	24	78	78	4988	4565
ISO 40 - D.32 FISSO / H 120	5507			58	62		
ISO 40 - D.40 FISSO / H 55	5508	40	27	88	88	4989	4566
ISO 50 - D.16 FISSO / H 45	5509	16	17	38	38	4985	4562
ISO 50 - D.16 FISSO / H 150	5510			32	39		
ISO 50 - D.22 FISSO / H 45	5511	22	19	48	48	4986	4563
ISO 50 - D.22 FISSO / H 150	5512			40	49		
ISO 50 - D.27 FISSO / H 45	5513	27	21	58	58	4987	4564
ISO 50 - D.27 FISSO / H 150	5514			48	75		
ISO 50 - D.32 FISSO / H 50	5515	32	24	78	78	4988	4565
ISO 50 - D.32 FISSO / H 150	5516			58	80		
ISO 50 - D.40 FISSO / H 50	5517	40	27	88	88	4989	4566
ISO 50 - D.40 FISSO / H 150	5518			70	90		



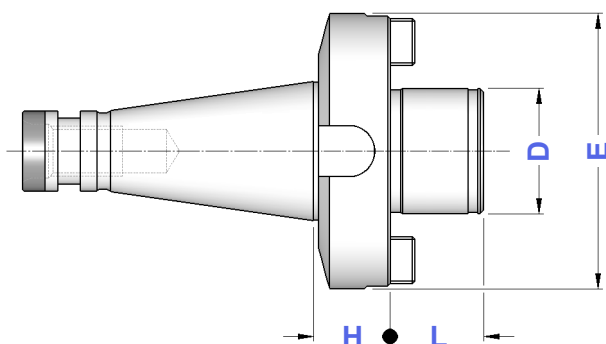
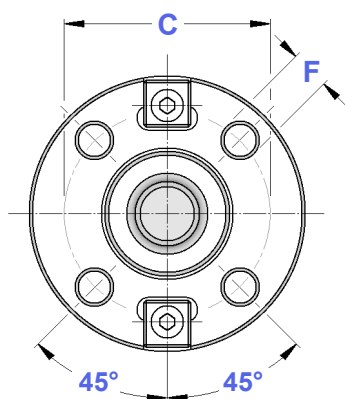
Dove trovare questi Articoli nel Catalogo Generale

Where to find those Items
on General Catalogue

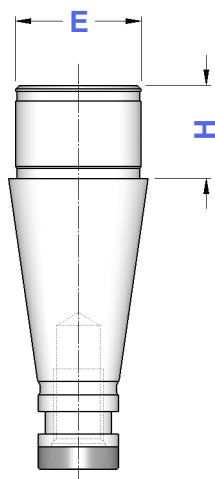
	Viti testa a croce - pag. 194 Cross head screws - page 194
	Chiavi per testa a croce - pag. 194 Wrenches for cross head - page 194
	Tasselli - pag. 195 Dowels - page 195
	Viti di bloccaggio tassello - pag. 198 Dowel screws - page 198

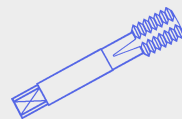
**DIN
2080****ATTACCHI PER FRESE AD INSERTI**
FACE MILL HOLDERS FOR FACE MILLING CUTTERS

TIPO	Art.	D	H	L	E	C	F	
ISO 40 - D. 40 FM	4223	40	20	30	89	66,7	M12	7461
ISO 40 - D. 60 FM	4225	60	30	40	129	101,6	M16	7461
ISO 50 - D. 40 FM	4226	40	30	30	89	66,7	M12	7462
ISO 50 - D. 60 FM	4228	60	30	40	129	101,6	M16	7462

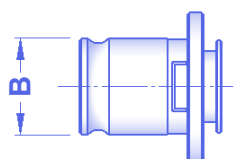
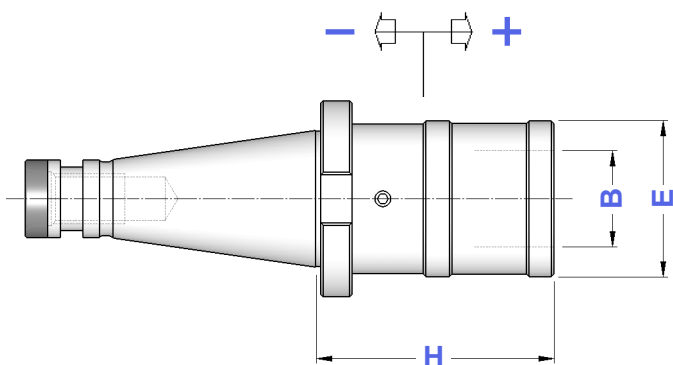
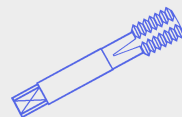
**DIN
2080****CENTRATORI PER FRESE AD INSERTI**
CENTERINGS FOR MILLING CUTTERS

TIPO	Art.	H	E	
ISO 40 - D. 40 CF	4012	29	40	7461
ISO 50 - D. 60 CF	4025	39	60	7462

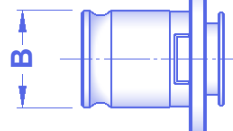
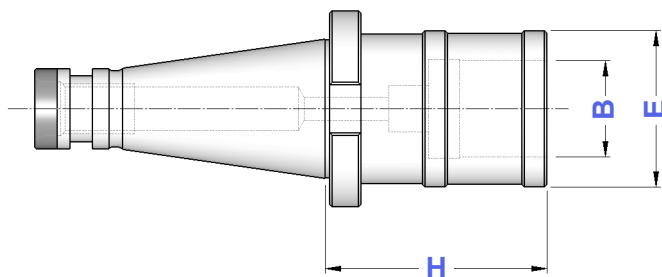


**DIN
2080****MASCHIATORI A CAMBIO RAPIDO CON
DOPPIA COMPENSAZIONE**
DOUBLE COMPENSATION QUICK CHANGE TAP HOLDERS

TIPO	Art.	H	E	B	COMPENSAZIONE	
ISO 30 - B. 1	3536	58	36	19	- 7,5 + 7,5	M 3 ÷ M 12 (*M16)
ISO 30 - B. 2	3537	85	53	31	- 15,0 + 15,0	M 6 ÷ M 20 (*M30)
ISO 40 - B. 1	3538	53	38	19	- 7,5 + 7,5	M 3 ÷ M 12 (*M16)
ISO 40 - B. 2	3539	77	55	31	- 15,0 + 15,0	M 6 ÷ M 20 (*M30)
ISO 40 - B. 3	3540	142	79	48	- 20,0 + 20,0	M 14 ÷ M 33 (*M48)
ISO 50 - B. 1	4199	57	38	19	- 9,0 + 9,0	M 3 ÷ M 12 (*M16)
ISO 50 - B. 2	3541	79	55	31	- 15,0 + 15,0	M 6 ÷ M 20 (*M30)
ISO 50 - B. 3	3542	125	79	48	- 20,0 + 20,0	M 14 ÷ M 33 (*M48)

* Bussole con grani
Adapters with screws**Bussole a Maschiare**
da pag. 172 a pag. 175
del Catalogo GeneraleTap Adapters
on General Catalogue
from page 172 to page 175**DIN
2080****MASCHIATORI A CAMBIO RAPIDO
SENZA COMPENSAZIONE**
QUICK CHANGE TAP HOLDERS WITHOUT COMPENSATION

TIPO	Art.	H	E	B	
ISO 30 - B. 1 FISSO	4941	59	33	19	M 3 ÷ M 12 (*M16)
ISO 30 - B. 2 FISSO	4942	84	50	31	M 6 ÷ M 20 (*M30)
ISO 40 - B. 1 FISSO	4943	52	33	19	M 3 ÷ M 12 (*M16)
ISO 40 - B. 2 FISSO	4944	74	50	31	M 6 ÷ M 20 (*M30)
ISO 50 - B. 1 FISSO	5108	55	33	19	M 3 ÷ M 12 (*M16)
ISO 50 - B. 2 FISSO	5109	78	50	31	M 6 ÷ M 20 (*M30)

* Bussole con grani
Adapters with screws**Bussole a Maschiare**
da pag. 172 a pag. 175
del Catalogo GeneraleTap Adapters
on General Catalogue
from page 172 to page 175**I maschiatori sono fornibili anche con la sola compensazione a trazione (SFILAMENTO)**
Tap holders are also available with traction compensation only (TENSION ONLY)