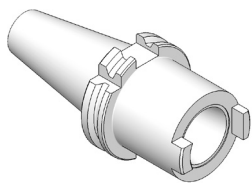


INDICE DELL' ATTACCO TC - DIN 69871

INDEX OF SK - DIN 69871 SHANK

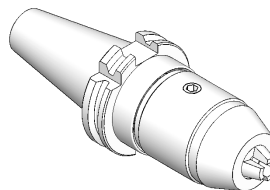
RIDUZIONI DA TC A ISO/TC/BT E HSK TC ADAPTERS TO ISO/TC/BT AND HSK



Programma
completo
a pag.

89

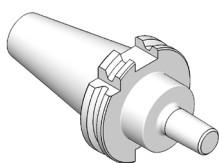
AUTOSERRANTI INTEGRALI MONOLITHIC DRILL CHUCKS



Programma
completo
a pag.

90

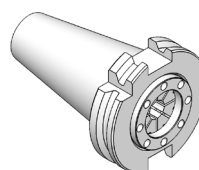
ATTACCHI PER MANDRINI PORTAPUNTA DIN 238 SHANKS FOR DRILL CHUCKS DIN 238 TYPE



Programma
completo
a pag.

91

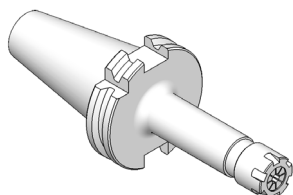
PORTAPINZA ER EXTRACORTI ER-DIN 6499 COLLET CHUCKS WITH INSIDE NUT



Programma
completo
a pag.

91

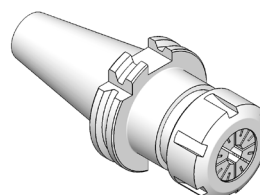
PORTAPINZA ER CON GHIERA MINI ER-DIN 6499 COLLET CHUCKS WITH MINI NUT



Programma
completo
a pag.

92

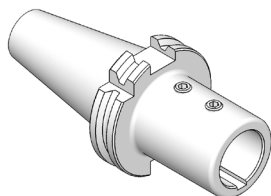
PORTAPINZA ER CON GHIERA STANDARD ER-DIN 6499 COLLET CHUCKS WITH STANDARD NUT



Programma
completo
da pag.

94

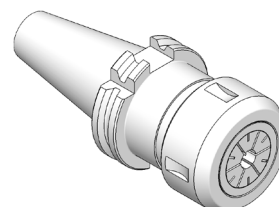
PORTA MANDRINI CON ATTACCO TRAPEZIO DIN 6327 AUTOMOTIVES SHANK HOLDERS ACCORDING TO DIN 6327



Programma
completo
a pag.

97

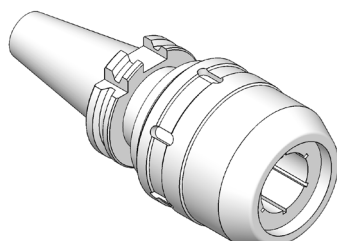
MANDRINI PER PINZE EOC DIN 6388 DIN 6388 COLLET CHUCKS



Programma
completo
a pag.

97

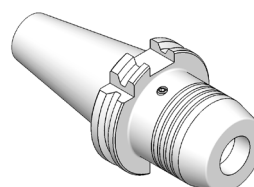
MANDRINI A FORTE SERRAGGIO HIGH GRIP CHUCKS



Programma
completo
a pag.

98

MANDRINI A SERRAGGIO IDRAULICO HYDRAULIC CHUCKS



Programma
completo
a pag.

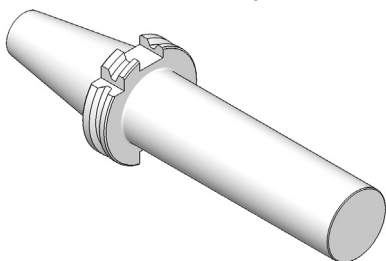
99

INDICE DELL' ATTACCO TC - DIN 69871

INDEX OF SK - DIN 69871 SHANK

BARRE A STELO TENERO

BLANK BARS

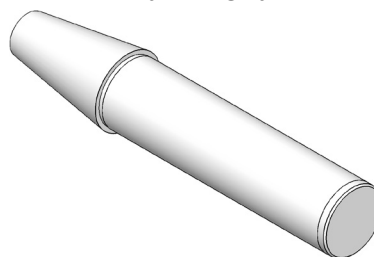


Programma completo a pag.

100

BARRE DI CONTROLLO

TEST ARBORS

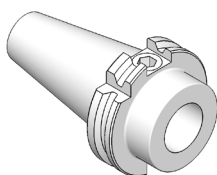


Programma completo a pag.

100

PORTAFRESE WELDON TIPO EXTRACORTO

SHORT TYPE END MILL HOLDERS
FOR DIN 1835-B SHANKS

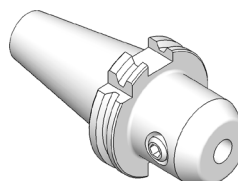


Programma completo a pag.

101

PORTAFRESE WELDON

END MILL HOLDERS
FOR DIN 1835-B SHANKS

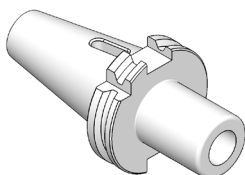


Programma completo da pag.

102

RIDUZIONI A CONO MORSE

ADAPTERS TO MORSE TAPER

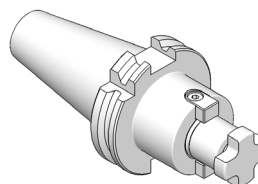


Programma completo da pag.

106

PORTAFRESE FISSI

DIN 6357
FACE MILL HOLDERS

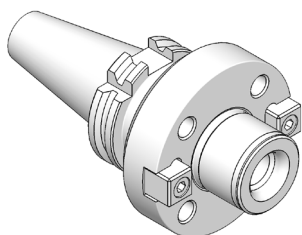


Programma completo da pag.

108

ATTACCHI PER FRESE AD INSERTI

FACE MILL HOLDERS FOR
FACE MILLING CUTTERS

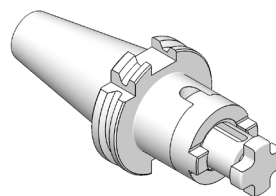


Programma completo a pag.

110

PORTAFRESE COMBINATI

DIN 6358 SHELL END
MILL HOLDERS

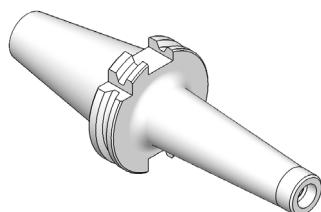


Programma completo a pag.

111

MANDRINI PER FRESE CON ATTACCO FILETTATO

CHUCKS FOR MILLING CUTTERS
WITH THREADED SHANK

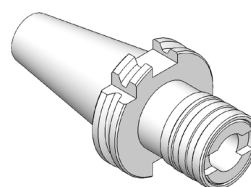


Programma completo a pag.

112

MASCHIATORI A CAMBIO RAPIDO

QUICK CHANGE TAP HOLDERS



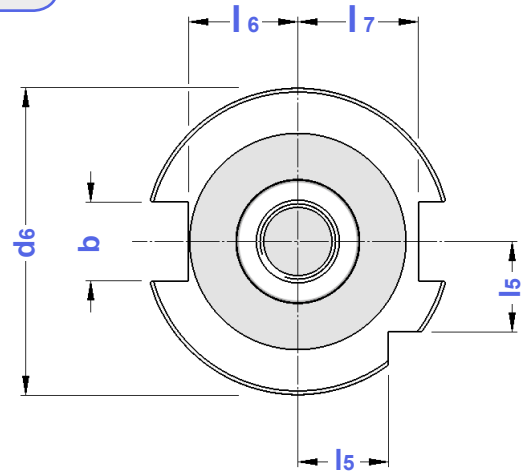
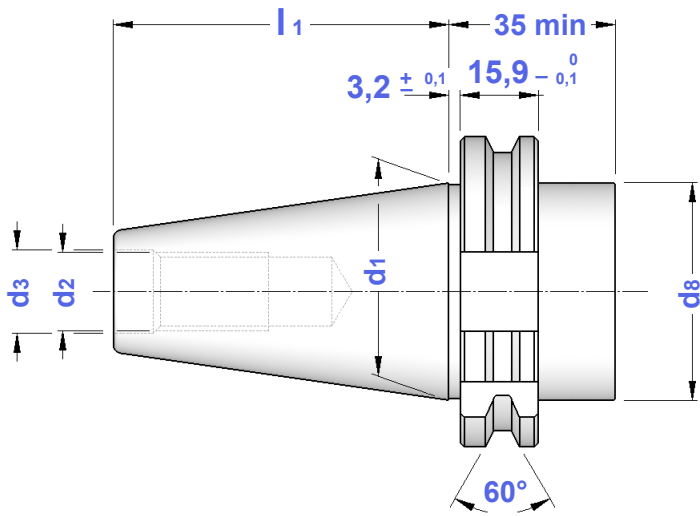
Programma completo a pag.

113

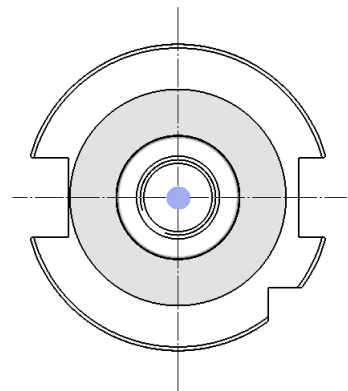
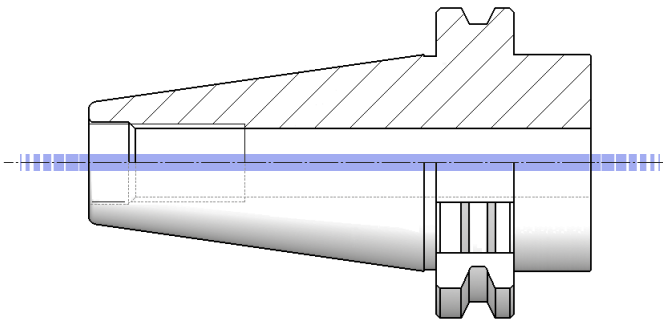
CARATTERISTICHE TECNICHE CONI DIN 69871

DIN 69871 TAPER STANDARD FEATURES

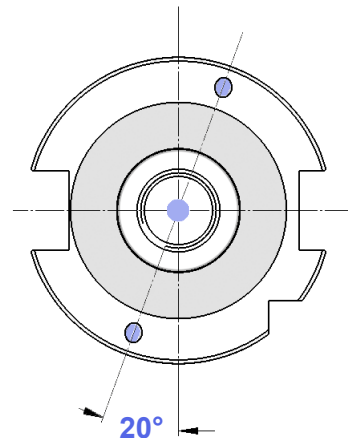
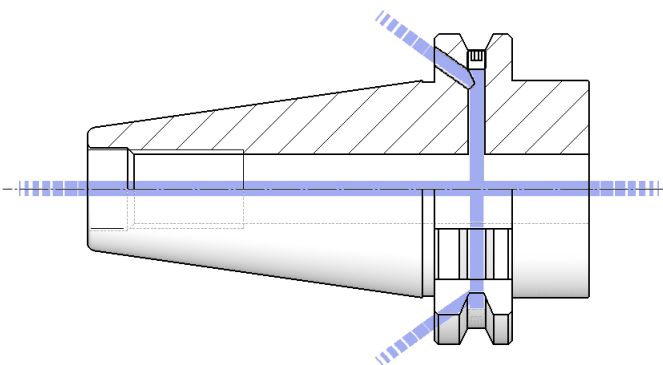
**FORMA
A**



**FORMA
AD**

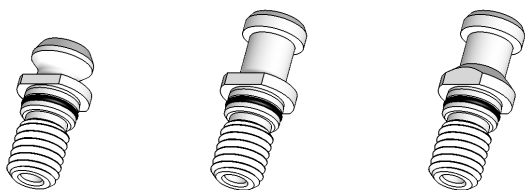


**FORMA
AD+B**



CONO	b	d1	d2	d3	d6	d8	l1	l5	l6	l7	PRECISIONE
TC30 - DIN 69871/A	16,1	31,75	M 12	13	50,00	45	47,80	15,0	16,4	19,0	
TC40 - DIN 69871/A	16,1	44,45	M 16	17	63,55	50	68,40	18,5	22,8	25,0	
TC45 - DIN 69871/A	19,3	57,15	M 20	21	82,55	63	82,70	24,0	29,1	31,3	
TC50 - DIN 69871/A	25,7	69,85	M 24	25	97,50	80	101,75	30,0	35,5	37,7	

CODOLI DI AGGANCIO PULL STUD BOLTS



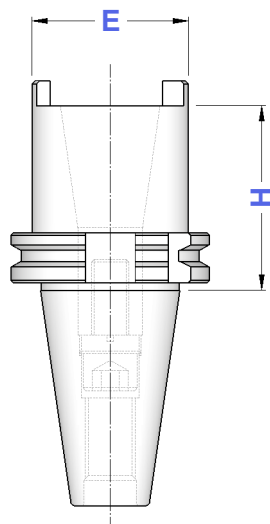
Codoli di aggancio da pag. 176 a pag. 185
del Catalogo Generale





*Pull stud bolts on General Catalogue
from page 176 to page 185*

DIN 69871

RIDUZIONI DA TC A ISO/TC/BT TC TO ISO/TC/BT ADAPTERS

FORMA A

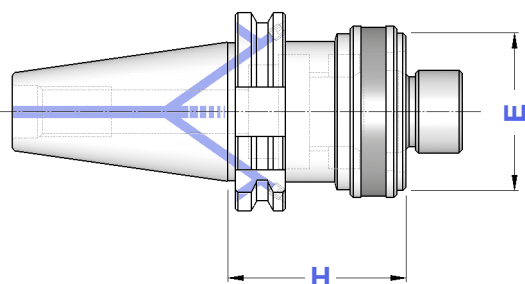


TIPO	FORMA A		E				
	Art.	H					
TC 40 - ISO 30/TC 30/BT 30	4203	60	50	7423	7410	0177	4570
TC 40 - ISO 40/TC 40/BT 40	8670	100	68	7424	7411	0179	4571
TC 50 - ISO 40/TC 40/BT 40	4257	70	68	7424	7411	0179	4571
TC 50 - ISO 50/TC 50/BT 50	8671	120	100	7426	7417	0254	4780

DIN 69871

RIDUZIONI DA TC AD HSK A+C TC TO HSK A+C ADAPTERS

FORMA B (AD+B)



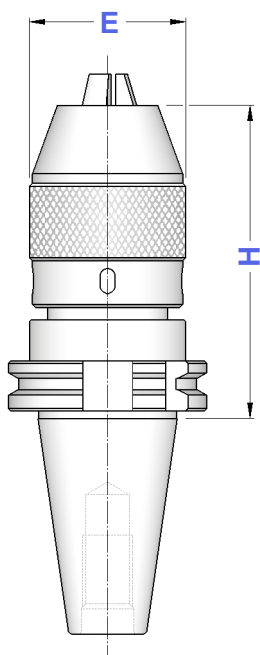
TIPO	FORMA B		
	Art.	H	E
TC 40 - HSK 50 A+C	8688	60	50
TC 40 - HSK 63 A+C	8689	80	63
TC 50 - HSK 63 A+C	8692	60	63

DIN 69871
**MANDRINI AUTOSERRANTI INTEGRALI
 ROTAZIONE DESTRA**

MONOLITHIC DRILL CHUCKS - RIGHT SPIN


FORMA A
 Balanced G 6,3
 12.000 rpm
FORMA A

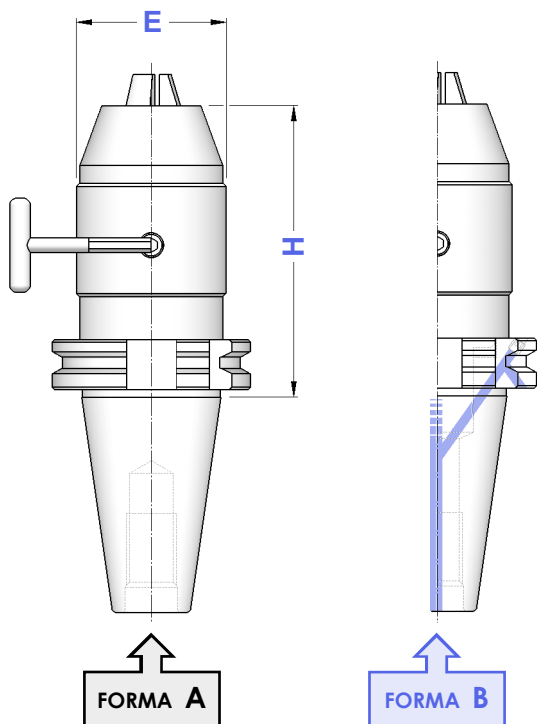
TIPO	Art.	CAPACITA'	E	H			
TC 30 - DC 13	8583	1 ÷ 13	50	110	9016	9021	2370
TC 40 - DC 13	4398	1 ÷ 13	50	100	9016	9021	2370
TC 40 - DC 16	4399	3 ÷ 16	57	115	9017	9023	2371
TC 50 - DC 13	4402	1 ÷ 13	50	100	9016	9021	2370
TC 50 - DC 16	4403	3 ÷ 16	57	105	9017	9023	2371


 Precisione di rotazione: 0,05 mm
 Runout accuracy: 0,05 mm
DIN 69871
**MANDRINI AUTOSERRANTI INTEGRALI
 ROTAZIONE DESTRA E SINISTRA**

MONOLITHIC DRILL CHUCKS - RIGHT & LEFT SPIN

FORMA A**FORMA B (AD+B)**
 Balanced G 6,3
 12.000 rpm
FORMA A **FORMA B**

TIPO	Art.	Art.	CAPACITA'	E	H	
TC 30 - DCU 13	8584	—	1 ÷ 13	50	120	2372
TC 40 - DCU 13	8585	8589	1 ÷ 13	50	90	2372
TC 40 - DCU 16	8586	8590	3 ÷ 16	50	95	
TC 50 - DCU 13	8587	8591	1 ÷ 13	50	90	2372
TC 50 - DCU 16	8588	8592	3 ÷ 16	50	95	


 Precisione di rotazione: 0,05 mm
 Runout accuracy: 0,05 mm

DIN 69871

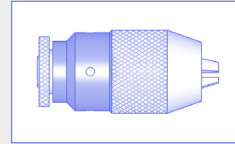
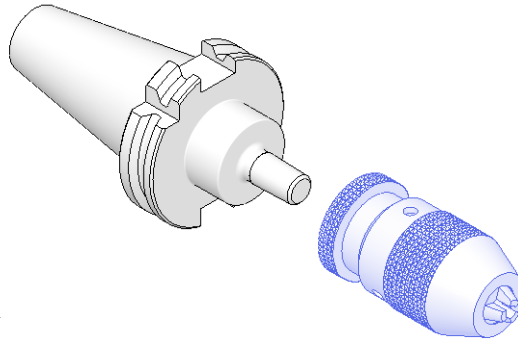
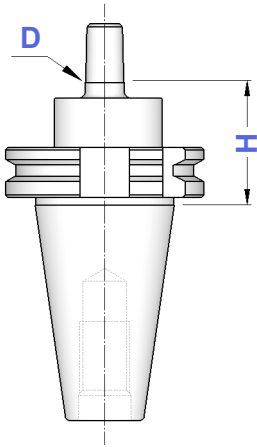
ATTACCHI PER MANDRINI PORTAPUNTA DIN 238 SHANKS FOR DRILL CHUCKS DIN 238 TYPE

FORMA A

Balanced G 6,3
8.000 rpm

FORMA A

TIPO	Art.	D	H
TC 30 - B 12	3867	12,065	40
TC 30 - B 16	3868	15,733	40
TC 40 - B 12	3869	12,065	40
TC 40 - B 16	3870	15,733	40
TC 40 - B 18	3871	17,780	40
TC 45 - B 16	3958	15,733	40
TC 50 - B 16	3998	15,733	40
TC 50 - B 18	3999	17,780	40



I Mandrini Autoserranti
si trovano a pagina 69
del Catalogo Generale

Keyless Drill Chucks
you can find on
General Catalogue page 69

DIN 69871

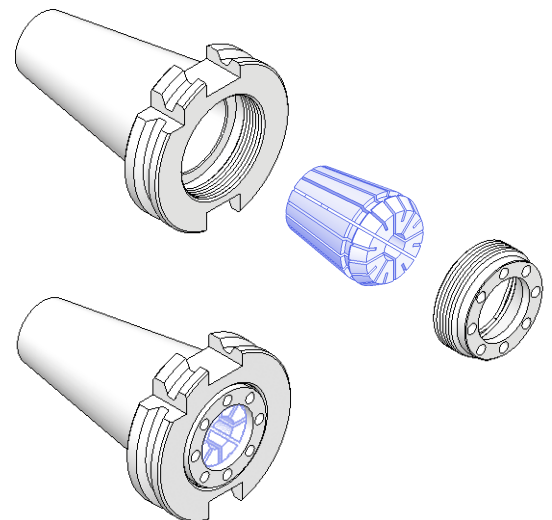
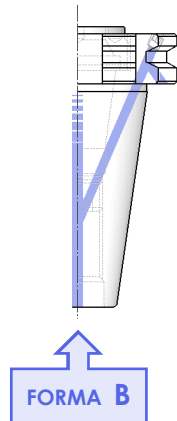
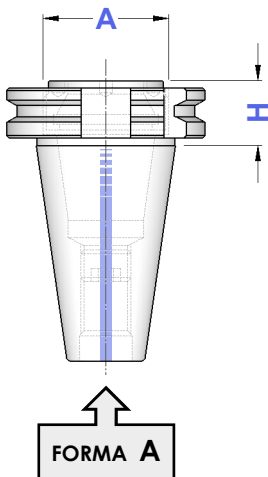
PORTAPINZA ER EXTRACORTI ER - DIN 6499 COLLET CHUCKS WITH INSIDE NUT

FORMA A (AD)

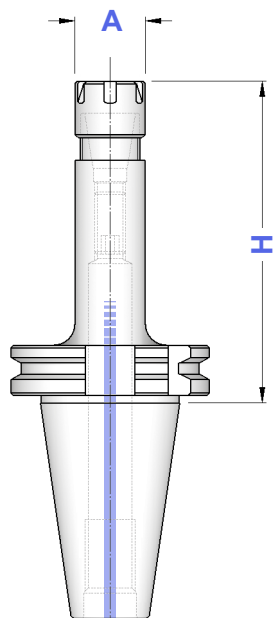
FORMA B (AD+B)

Balanced G 6,3
12.000 rpm

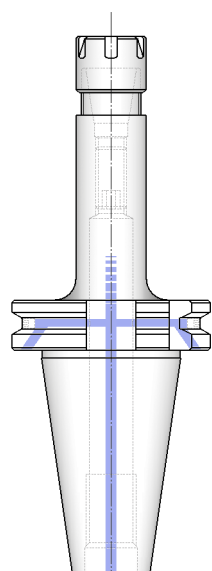
TIPO	FORMA A	FORMA B	H	A	CAPACITA'				
	Art.	Art.							
TC 40 - ER25 GA	8038	8039	21	M 32 x1,5	1 ÷ 16	0073	2870	3172	0996
TC 40 - ER32 GA	3370	—	21	M 40 x1,5	2 ÷ 20	0073	2871	3173	0988
TC 50 - ER32 GA	3371	8040	21	M 40 x1,5	2 ÷ 20	0191	2871	3173	0988



Balanced	G 6,3
≤ H100	12.000 rpm
> H100	8.000 rpm



FORMA A



FORMA B

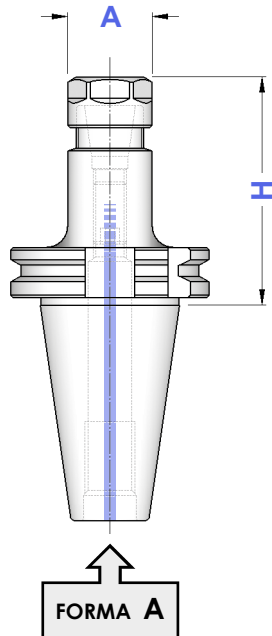
TIPO	FORMA A	FORMA B	A	CAPACITA'				
	Art.	Art.						
TC 30 - ER 11 GM / H 80	4072	---	16	1 ÷ 7	0181	0432	5718	5573
TC 30 - ER 16 GM / H 80	3001	---	22	1 ÷ 10	0183	1229	5719	0364
TC 30 - ER 16 GM / H120	3432	---						
TC 40 - ER 11 GM / H 70	4073	4720	16	1 ÷ 7	0181	0432	5718	5573
TC 40 - ER 11 GM / H100	4020	4721						
TC 40 - ER 11 GM / H130	4057	4722						
TC 40 - ER 11 GM / H160	3416	4723						
TC 40 - ER 11 GM / H200								
TC 40 - ER 16 GM / H 70	3417	4724	22	1 ÷ 10	0186	1229	5719	0364
TC 40 - ER 16 GM / H100	4074	4748						
TC 40 - ER 16 GM / H130	3433	4749						
TC 40 - ER 16 GM / H160	4014	4021						
TC 40 - ER 16 GM / H200	3418	4026						
TC 40 - ER 20 GM / H 70	3005	4000	28	1 ÷ 13	0188	1230	5720	0787
TC 40 - ER 20 GM / H100	4015	4022						
TC 40 - ER 20 GM / H130	3434	4750						
TC 40 - ER 20 GM / H160	4016	4691						
TC 40 - ER 20 GM / H200	4017	4729						
TC 40 - ER 25 GM / H 70	3007	4001	35	1 ÷ 16	0190	1231	5721	0996
TC 40 - ER 25 GM / H100	4075	4751						
TC 40 - ER 25 GM / H130	3435	4730						
TC 40 - ER 25 GM / H160	3436	4752						
TC 40 - ER 25 GM / H200	3437	4753						
TC 50 - ER 16 GM / H100	3008	4046	22	1 ÷ 10	0186	1229	5719	0364
TC 50 - ER 16 GM / H130	3440	4756						
TC 50 - ER 16 GM / H160	4018	4693						
TC 50 - ER 16 GM / H200	4019	4757						
TC 50 - ER 20 GM / H100	3010	4047	28	1 ÷ 13	0188	1230	5720	0787
TC 50 - ER 20 GM / H130	3441	4758						
TC 50 - ER 20 GM / H160	3419	4760						
TC 50 - ER 20 GM / H200	3012	4070						
TC 50 - ER 25 GM / H100	3016	4071	35	1 ÷ 16	0190	1231	5721	0996
TC 50 - ER 25 GM / H130	3024	4483						
TC 50 - ER 25 GM / H160	3420	4759						
TC 50 - ER 25 GM / H200	3025	4484						

Dove trovare questi Articoli nel Catalogo Generale

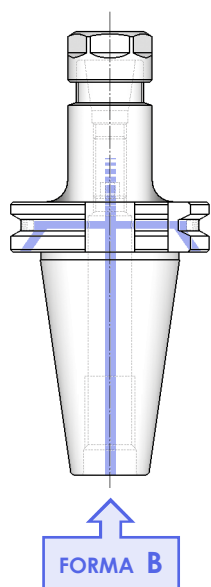
Where to find those Items on General Catalogue

	Pinze ER - da pag. 8 ER Collets - from page 8
	Ghiere ER - pag. 20 ER Nuts - page 20
	Chiavi ER - pag. 25 ER Wrenches - page 25
	Grani di preasettaggio da pag. 197 Presetting screws from page 197

Balanced	G 6,3
≤ H100	12.000 rpm
> H100	8.000 rpm



TIPO	FORMA A	FORMA B	A	CAPACITA'				
	Art.	Art.						
TC 30 - ER 16 GE / H 55 TC 30 - ER 16 GE / H 100	8048 8049	---	28	1 ÷ 10	0183	1214	2906	0364
TC 30 - ER 20 GE / H 55 TC 30 - ER 20 GE / H 100	8050 8051	---	34	1 ÷ 13	0183	1215	2907	0787
TC 40 - ER 11 GE / H 70 TC 40 - ER 11 GE / H 100 TC 40 - ER 11 GE / H 130 TC 40 - ER 11 GE / H 160	3336 3337 3338 3339	4725 4726 4727 4728	19	1 ÷ 7	0181	1157	2905	5573
TC 40 - ER 16 GE / H 70 TC 40 - ER 16 GE / H 100 TC 40 - ER 16 GE / H 130 TC 40 - ER 16 GE / H 160 TC 40 - ER 16 GE / H 200	8052 8053 8054 8055 8056	8068 8069 8070 8071 8072	28	1 ÷ 10	0186	1214	2906	0364
TC 40 - ER 20 GE / H 70 TC 40 - ER 20 GE / H 100 TC 40 - ER 20 GE / H 130 TC 40 - ER 20 GE / H 160 TC 40 - ER 20 GE / H 200	8057 8058 8059 8060 8061	8073 8074 8075 8076 8077	34	1 ÷ 13	0188	1215	2907	0787
TC 50 - ER 16 GE / H 100 TC 50 - ER 16 GE / H 160 TC 50 - ER 16 GE / H 200	8062 8063 8064	8078 8079 8080	28	1 ÷ 10	0186	1214	2906	0364
TC 50 - ER 20 GE / H 100 TC 50 - ER 20 GE / H 160 TC 50 - ER 20 GE / H 200	8065 8066 8067	8081 8082 8083	34	1 ÷ 13	0188	1215	2907	0787

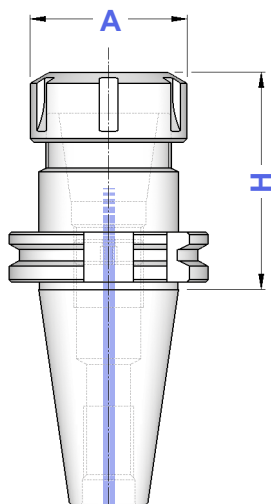


Dove trovare questi Articoli nel Catalogo Generale

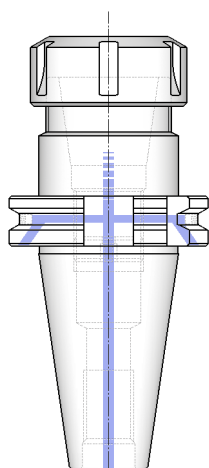
Where to find those Items on General Catalogue

	Pinze ER - da pag. 8 ER Collets - from page 8
	Ghiere ER - pag. 20 ER Nuts - page 20
	Chiavi ER - pag. 25 ER Wrenches - page 25
	Grani di presettaggio da pag. 197 Presetting screws from page 197

Balanced	G 6,3
≤ H100	12.000 rpm
> H100	8.000 rpm







FORMA A



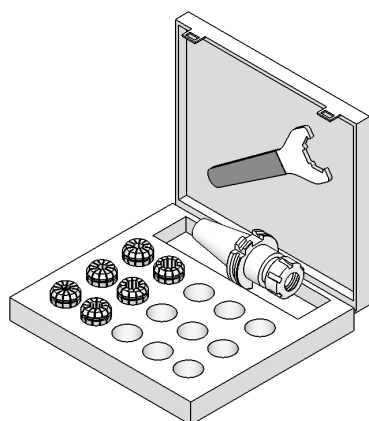
FORMA B

TIPO	FORMA A	FORMA B	A	CAPACITA'				
	Art.	Art.						
TC 30 - ER 16/H 55 TC 30 - ER 16/H 100	3442 3373	---	32	1 ÷ 10	0183	4993	3698	0364
TC 30 - ER 20/H 55 TC 30 - ER 20/H 100	0138 3374	---	35	1 ÷ 13	0183	4994	3699	0787
TC 30 - ER 25/H 55 TC 30 - ER 25/H 100	3342 3375	---	42	1 ÷ 16	0190	4995	3669	0996
TC 30 - ER 32/H 60 TC 30 - ER 32/H 100	3343 3376	---	50	2 ÷ 20	0190	4996	3670	0988
TC 40 - ER 16/H 70 TC 40 - ER 16/H 100 TC 40 - ER 16/H 130 TC 40 - ER 16/H 160 TC 40 - ER 16/H 200	3443 3444 3098 3445 3446	4700 4701 4754 4702 4755	32	1 ÷ 10	0186	4993	3698	0364
TC 40 - ER 20/H 70 TC 40 - ER 20/H 100 TC 40 - ER 20/H 130 TC 40 - ER 20/H 160 TC 40 - ER 20/H 200	3344 0140 3099 3100 3104	4703 4704 4830 4705 4831	35	1 ÷ 13	0188	4994	3699	0787
TC 40 - ER 25/H 70 TC 40 - ER 25/H 100 TC 40 - ER 25/H 130 TC 40 - ER 25/H 160 TC 40 - ER 25/H 200	3345 0141 0142 0146 3105	4706 4707 4708 4709 4832	42	1 ÷ 16	0190	4995	3669	0996
TC 40 - ER 32/H 70 TC 40 - ER 32/H 100 TC 40 - ER 32/H 130 TC 40 - ER 32/H 160 TC 40 - ER 32/H 200	3346 3347 3101 3348 3102	4710 4711 4712 4713 4076	50	2 ÷ 20	0191	4996	3670	0988
TC 40 - ER 40/H 70 TC 40 - ER 40/H 100 TC 40 - ER 40/H 130 TC 40 - ER 40/H 160 TC 40 - ER 40/H 200	3349 3350 3351 0153 3103	4714 4715 4716 4717 4718	63	3 ÷ 30	0195	4997	3671	0821
TC 40 - ER 50/H 85	0154	4719	78	6 ÷ 34	0191	4998	3668	4055
TC 45 - ER 32/H 70 TC 45 - ER 32/H 100 TC 45 - ER 32/H 130 TC 45 - ER 32/H 160 TC 45 - ER 32/H 200	3353 3106 3354 0184 3107	---	50	2 ÷ 20	0191	4996	3670	0988
TC 45 - ER 40/H 80	3355	---	63	3 ÷ 30	0195	4997	3671	0821
TC 50 - ER 16/H 100 TC 50 - ER 16/H 160 TC 50 - ER 16/H 200	3451 3452 3453	4731 4732 4806	32	1 ÷ 10	0186	4993	3698	0364
TC 50 - ER 20/H 100 TC 50 - ER 20/H 160 TC 50 - ER 20/H 200	3110 3111 3112	4733 4734 4807	35	1 ÷ 13	0188	4994	3699	0787
TC 50 - ER 25/H 70 TC 50 - ER 25/H 100 TC 50 - ER 25/H 160 TC 50 - ER 25/H 200	3360 0193 0199 3372	4735 4736 4737 4808	42	1 ÷ 16	0190	4995	3669	0996

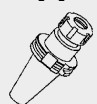
segue ➡

TIPO	FORMA		A	CAPACITA'				
	Art. A	Art. B						
TC 50 - ER 32/H 70	3900	4738	50	2 ÷ 20	0191	4996	3670	0988
TC 50 - ER 32/H 100	3361	4739						
TC 50 - ER 32/H 130	3362	4740						
TC 50 - ER 32/H 160	3363	4741						
TC 50 - ER 32/H 200	3364	4742						
TC 50 - ER 32/H 250	3382	4809						
TC 50 - ER 40/H 80	3901	4743	63	3 ÷ 30	0195	4997	3671	0821
TC 50 - ER 40/H 100	3365	4744						
TC 50 - ER 40/H 130	3366	4745						
TC 50 - ER 40/H 160	3367	4746						
TC 50 - ER 40/H 200	3368	4747						
TC 50 - ER 50/H 100	3369	4810						
TC 50 - ER 50/H 160	8044	8045						

**CASSETTE CON SERIE RIDOTTA
DI PINZE ER, MANDRINO FORMA A E CHIAVE**
EQUIPMENT BOXES WITH REDUCED SET OF ER COLLETS

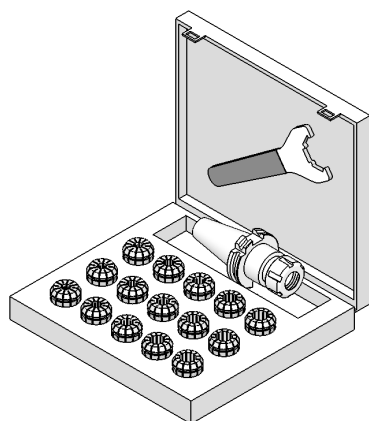


**FORMA
A**

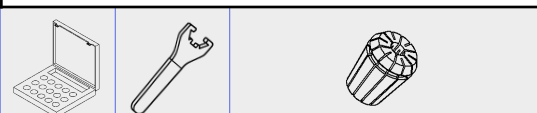
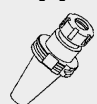


TIPO	Art.	A	3695	3669	0996: Ø 4-6-8-10-12-16
KIT Rid TC 30/H 55 - ER 25	7770	3342	3695	3669	0996: Ø 4-6-8-10-12-16
KIT Rid TC 30/H 60 - ER 32	7771	3343	3695	3670	0988: Ø 4-6-8-10-12-16-20
KIT Rid TC 40/H 70 - ER 25	7772	3345	3695	3669	0996: Ø 4-6-8-10-12-16
KIT Rid TC 40/H 70 - ER 32	7773	3346	3695	3670	0988: Ø 4-6-8-10-12-16-20
KIT Rid TC 40/H 70 - ER 40	7774	3349	3695	3671	0821: Ø 4-6-8-10-12-16-20-25
KIT Rid TC 50/H 70 - ER 32	7775	3900	3695	3670	0988: Ø 4-6-8-10-12-16-20
KIT Rid TC 50/H 80 - ER 40	7776	3901	3695	3671	0821: Ø 4-6-8-10-12-16-20-25

**CASSETTE CON SERIE COMPLETA
DI PINZE ER, MANDRINO FORMA A E CHIAVE**
EQUIPMENT BOXES WITH COMPLETE SET OF ER COLLETS



**FORMA
A**



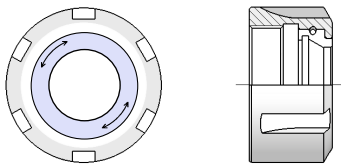
TIPO	Art.	A	3695	3669	0996: Ø 2 ÷ 16 (15 Pinze)
KIT TC 30/H 55 - ER25	7777	3342	3695	3669	0996: Ø 2 ÷ 16 (15 Pinze)
KIT TC 30/H 60 - ER32	7778	3343	3695	3670	0988: Ø 3 ÷ 20 (18 Pinze)
KIT TC 40/H 70 - ER25	7779	3345	3695	3669	0996: Ø 2 ÷ 16 (15 Pinze)
KIT TC 40/H 70 - ER32	7780	3346	3695	3670	0988: Ø 3 ÷ 20 (18 Pinze)
KIT TC 40/H 70 - ER40	7781	3349	3695	3671	0821: Ø 4 ÷ 26 (23 Pinze)
KIT TC 50/H 70 - ER32	7782	3900	3695	3670	0988: Ø 3 ÷ 20 (18 Pinze)
KIT TC 50/H 80 - ER40	7783	3901	3695	3671	0821: Ø 4 ÷ 26 (23 Pinze)

Balanced	G 6,3
≤ H100	12.000 rpm
> H100	8.000 rpm

GHIERA con RALLA GIREVOLE

CARATTERISTICHE E VANTAGGI

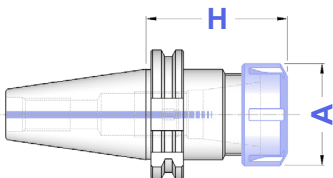
- Aumenta sensibilmente la forza di serraggio della pinza.
- Evita la torsione della pinza riducendone l'attrito con la sua sede e conseguentemente ne preserva la precisione.
- E' intercambiabile con le normali ghiera standard ed esagonali.



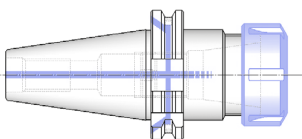
ROTARY RING NUT

CHARACTERISTICS AND ADVANTAGES

- Collet clamping force is sensitively increased.
- Avoids collet torsion reducing friction with its seat and consequently preserves its accuracy.
- Is interchangeable with standard and hexagonal nuts.



FORMA A
CON GHIERA GC



FORMA B
CON GHIERA GC

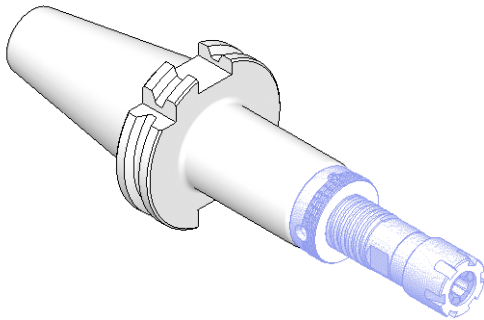
TIPO	FORMA A	FORMA B	A	CAPACITA'				
	Art.	Art.						
TC 30 - ER 16 GC/H 55	8120	---	32	1 ÷ 10	0183	4954	3698	0364
TC 30 - ER 16 GC/H 100	8121	---						
TC 30 - ER 20 GC/H 55	8122	---	35	1 ÷ 13	0183	4955	3699	0787
TC 30 - ER 20 GC/H 100	8123	---						
TC 30 - ER 25 GC/H 55	8124	---	42	1 ÷ 16	0190	3697	3669	0996
TC 30 - ER 25 GC/H 100	8125	---						
TC 30 - ER 32 GC/H 60	8126	---	50	2 ÷ 20	0190	2911	3670	0988
TC 30 - ER 32 GC/H 100	8127	---						
TC 40 - ER 16 GC/H 70	8128	8177	32	1 ÷ 10	0186	4954	3698	0364
TC 40 - ER 16 GC/H 100	8129	8178						
TC 40 - ER 16 GC/H 130	8130	8179						
TC 40 - ER 16 GC/H 160	8131	8180						
TC 40 - ER 16 GC/H 200	8132	8181						
TC 40 - ER 20 GC/H 70	8133	8182						
TC 40 - ER 20 GC/H 100	8134	8183	35	1 ÷ 13	0188	4955	3699	0787
TC 40 - ER 20 GC/H 130	8135	8184						
TC 40 - ER 20 GC/H 160	8136	8185						
TC 40 - ER 20 GC/H 200	8137	8186						
TC 40 - ER 25 GC/H 70	8138	8187						
TC 40 - ER 25 GC/H 100	8139	8188						
TC 40 - ER 25 GC/H 130	8140	8189	42	1 ÷ 16	0190	3697	3669	0996
TC 40 - ER 25 GC/H 160	8141	8190						
TC 40 - ER 25 GC/H 200	8142	8191						
TC 40 - ER 32 GC/H 70	8143	8192						
TC 40 - ER 32 GC/H 100	8144	8193						
TC 40 - ER 32 GC/H 130	8145	8194						
TC 40 - ER 32 GC/H 160	8146	8195	50	2 ÷ 20	0191	2911	3670	0988
TC 40 - ER 32 GC/H 200	8147	8196						
TC 40 - ER 40 GC/H 70	8148	8197						
TC 40 - ER 40 GC/H 100	8149	8198						
TC 40 - ER 40 GC/H 130	8150	8199						
TC 40 - ER 40 GC/H 160	8151	8200						
TC 40 - ER 40 GC/H 200	8152	8201	63	3 ÷ 30	0195	2912	3671	0821
TC 50 - ER 16 GC/H 100	8154	8203						
TC 50 - ER 16 GC/H 160	8155	8204						
TC 50 - ER 16 GC/H 200	8156	8205						
TC 50 - ER 20 GC/H 100	8157	8206						
TC 50 - ER 20 GC/H 160	8158	8207						
TC 50 - ER 20 GC/H 200	8159	8208	42	1 ÷ 16	0190	3697	3669	0996
TC 50 - ER 25 GC/H 70	8160	8209						
TC 50 - ER 25 GC/H 100	8161	8210						
TC 50 - ER 25 GC/H 160	8162	8211						
TC 50 - ER 25 GC/H 200	8163	8212						
TC 50 - ER 32 GC/H 70	8164	8213						
TC 50 - ER 32 GC/H 100	8165	8214	50	2 ÷ 20	0191	2911	3670	0988
TC 50 - ER 32 GC/H 130	8166	8215						
TC 50 - ER 32 GC/H 160	8167	8216						
TC 50 - ER 32 GC/H 200	8168	8217						
TC 50 - ER 32 GC/H 250	8169	8218						
TC 50 - ER 40 GC/H 80	8170	8219						
TC 50 - ER 40 GC/H 100	8171	8220	63	3 ÷ 30	0195	2912	3671	0821
TC 50 - ER 40 GC/H 130	8172	8221						
TC 50 - ER 40 GC/H 160	8173	8222						
TC 50 - ER 40 GC/H 200	8174	8223						

DIN 69871


PORTA MANDRINI CON ATTACCO TRAPEZIO DIN 6327 AUTOMOTIVE SHANKS HOLDERS ACCORDING TO DIN 6327

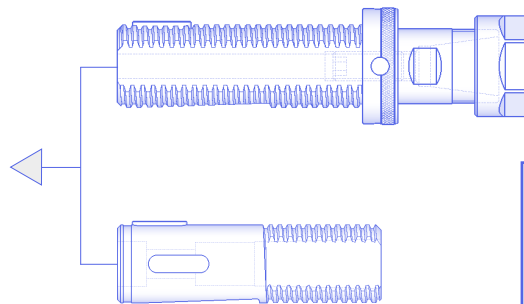
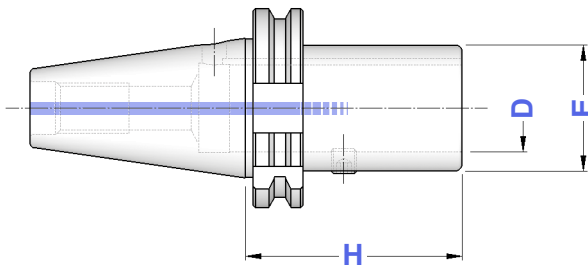
FORMA A (AD)

Balanced G 6,3
8.000 rpm



FORMA A

TIPO	Art.	D	H	E	
TC 40 - TR 20	3945	20	70	32	0020
TC 40 - TR 28	3946	28	70	40	0021
TC 40 - TR 36	3947	36	120	50	0021
TC 45 - TR 20	3948	20	70	32	0020
TC 45 - TR 28	3949	28	70	40	0021
TC 45 - TR 36	3950	36	100	50	0021
TC 50 - TR 28	3951	28	100	40	0021
TC 50 - TR 36	3952	36	100	50	0021
TC 50 - TR 48	3953	48	105	67	0060



Trovate il programma
DIN 6327 da pag. 46
del Catalogo Generale

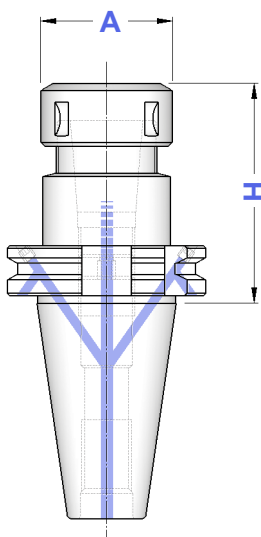
You will find DIN 6327
program on General
Catalogue from page 46

DIN 69871




MANDRINI PER PINZE EOC DIN 6388 DIN 6388 COLLET CHUCKS

FORMA B (AD+B)

Balanced G 6,3
≤ H100 12.000 rpm
> H100 8.000 rpm



FORMA B

TIPO	Art.	A	CAPACITA'			
TC 40 - EOC 16/H 70	8693	43	2 ÷ 16	4067	2883	0768
TC 40 - EOC 16/H 100	8694					
TC 40 - EOC 16/H 130	8695					
TC 40 - EOC 25/H 70	8696	60	2 ÷ 25	4068	2909	0769
TC 40 - EOC 25/H 100	8697					
TC 40 - EOC 25/H 130	8698					
TC 40 - EOC 32/H 80	8699	72	3 ÷ 32	4069	2910	0770
TC 50 - EOC 16/H 70	8700	43	2 ÷ 16	4067	2883	0768
TC 50 - EOC 16/H 100	8701					
TC 50 - EOC 25/H 70	8702	60	2 ÷ 25	4068	2909	0769
TC 50 - EOC 25/H 100	8703					
TC 50 - EOC 25/H 130	8704					
TC 50 - EOC 32/H 80	8705	72	3 ÷ 32	4069	2910	0770
TC 50 - EOC 32/H 130	8706					



Pinze, ghieri e chiavi
EOC - DIN 6388 si trovano
da pagina 28 del Catalogo Generale.

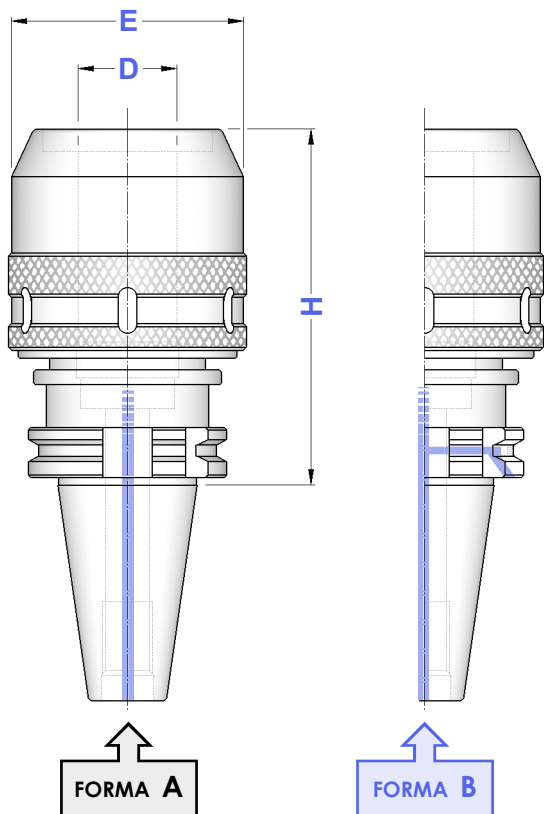
Collets, nuts and wrenches
EOC - DIN 6388 type you can find
on General Catalogue from page 28

DIN 69871**MANDRINI A FORTE SERRAGGIO**
HIGH GRIP CHUCKS**FORMA A (AD)****FORMA B (AD+B)**

Balanced G 6,3

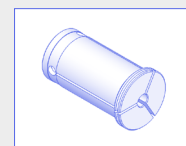
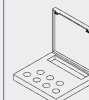
12.000 rpm

TIPO	FORMA A	FORMA B	D	E		
	Art.	Art.				
TC 40 - PC 20/H 80	5110	5222	20	54	2900	0809
TC 40 - PC 20/H 105	3241	—				
TC 40 - PC 32/H 90	5111	5223	32	74	2910	0810
TC 40 - PC 32/H 105	3242	—				
TC 40 - PC 32/H 135	5103	—				
TC 50 - PC 20/H 80	5112	5225	20	54	2900	0809
TC 50 - PC 20/H 105	3243	—				
TC 50 - PC 32/H 90	5113	5226	32	74	2910	0810
TC 50 - PC 32/H 105	3244	—				
TC 50 - PC 32/H 135	5106	—				

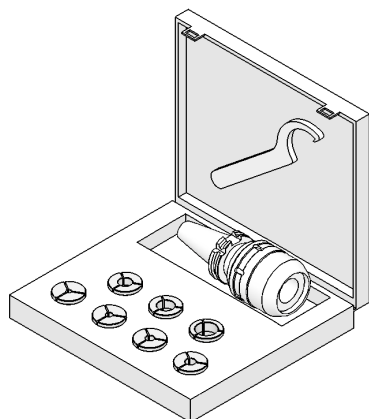


**Pinze cilindriche di riduzione
per Mandrini a Forte Serraggio
Pag. 31 del Catalogo Generale**

*Reduction cylindrical collets
for High Grip Chucks on
General Catalogue page 31*

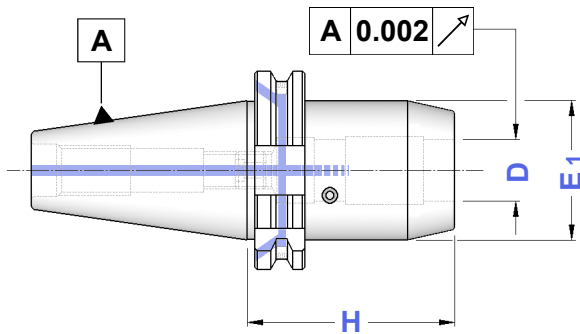
**CASSETTE CON MANDRINO
CHIAVE E PINZE**EQUIPMENT BOXES WITH COLLET CHUCK
WRENCH AND COLLETS**FORMA A**

TIPO	Art.	5110	3241	3695	2900	0809	0810
KIT TC 40 - PC 20 / H 80	7543	5110	3241	3695	2900	0809	0810
KIT TC 40 - PC 20 / H 105	7704	5111	3242	3695	2910	0809	0810
KIT TC 40 - PC 32 / H 90	7544	5112	3243	3695	2900	0809	0810
KIT TC 40 - PC 32 / H 105	7707	5113	3244	3695	2910	0809	0810
KIT TC 50 - PC 20 / H 80	7545	5110	3241	3695	2900	0809	0810
KIT TC 50 - PC 20 / H 105	7708	5111	3242	3695	2910	0809	0810
KIT TC 50 - PC 32 / H 90	7546	5112	3243	3695	2900	0809	0810
KIT TC 50 - PC 32 / H 105	7711	5113	3244	3695	2910	0809	0810



DIN 69871**MANDRINI A SERRAGGIO IDRAULICO
TIPO CORTO**

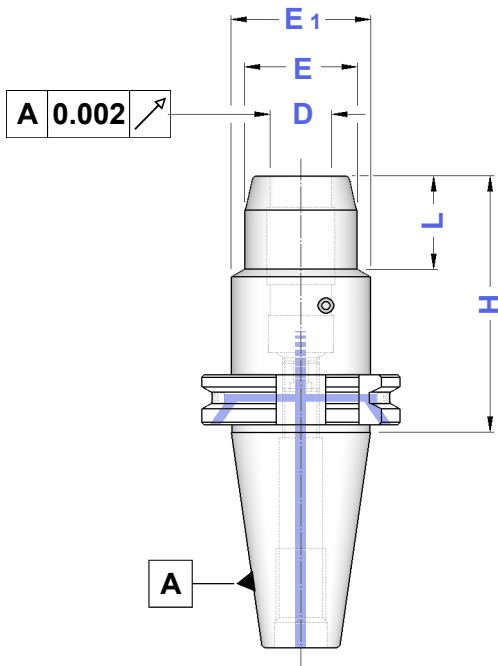
SHORT TYPE HYDRAULIC CHUCKS

FORMA B (AD+B)Balanced G 2,5
20.000 rpm**FORMA
B**

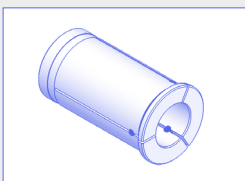
TIPO	Art.	D	H	E1	
TC 40 - HYDRO 20	5150	20	64	49,5	0521
TC 50 - HYDRO 32	5160	32	81	72,0	0522

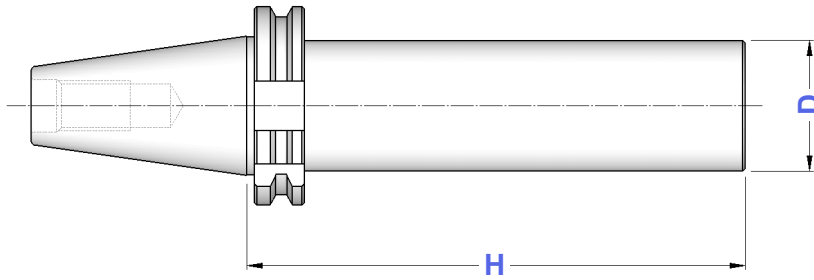
DIN 69871**MANDRINI A SERRAGGIO IDRAULICO
TIPO ALLEGGERITO**

RELIEVED TYPE HYDRAULIC CHUCKS

FORMA B (AD+B)Balanced G 2,5
20.000 rpm**FORMA
B**

TIPO	Art.	D	H	E	E1	L
TC 40 - HYDRO 6/H 80	5151	6	80	26	49,5	29,5
TC 40 - HYDRO 8/H 80	5152	8	80	28	49,5	30,0
TC 40 - HYDRO 10/H 80	5153	10	80	30	49,5	35,0
TC 40 - HYDRO 12/H 80	5154	12	80	32	49,5	40,0
TC 40 - HYDRO 16/H 80	5155	16	80	38	49,5	45,0
TC 40 - HYDRO 20/H 80	5156	20	80	42	49,5	47,0
TC 40 - HYDRO 25/H 80	5157	25	80	55	63,0	28,0
TC 40 - HYDRO 32/H 80	5158	32	80	63	70,0	25,5
TC 50 - HYDRO 6/H 80	8995	6	80	26	49,5	29,5
TC 50 - HYDRO 8/H 80	8996	8	80	28	49,5	30,0
TC 50 - HYDRO 10/H 80	8997	10	80	30	49,5	35,0
TC 50 - HYDRO 12/H 80	8998	12	80	32	49,5	40,0
TC 50 - HYDRO 16/H 80	8999	16	80	38	49,5	45,0
TC 50 - HYDRO 20/H 80	5161	20	80	42	49,5	42,0
TC 50 - HYDRO 25/H 100	5021	25	100	55	63,0	48,0
TC 50 - HYDRO 32/H 100	5162	32	100	63	70,0	61,0

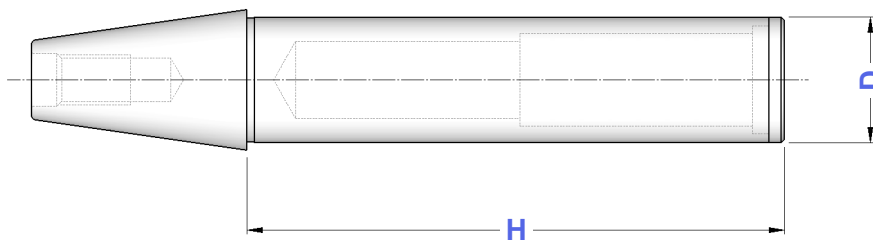
**Pinze cilindriche a tenuta stagna
per Mandrini Idraulici a pag. 31
del Catalogo Generale**Watertight cylindrical collets
for Hydraulic Chucks on
General Catalogue page 31**Applicazioni:** consente il bloccaggio ad alta precisione di utensili a gambo cilindrico DIN 1835 Forma A e B, con tolleranza di gambo h 6 e rugosità Ra < 0,3 micron**Attenzione :** non azionare il sistema idraulico se l'utensile non è inserito nel mandrino**Applications :** allows high precision locking of DIN 1835 shank tools Form A and B, with shank tolerance h 6 and surface roughness Ra < 0,3 micron.**Warning :** do not start Hydraulic System without any tool fit inside

DIN 69871**BARRE A STELO TENERO**
BLANK BARS**FORMA A****FORMA A**

TIPO	Art.	H	D
TC 40 - D. 40	4355	160	40
TC 40 - D. 50	4356	200	50
TC 40 - D. 63	4357	250	63
TC 50 - D. 40	4362	160	40
TC 50 - D. 50	4363	250	50
TC 50 - D. 63	4364	250	63
TC 50 - D. 80	4365	300	80

BARRE DI CONTROLLO
TEST ARBORS

TIPO	Art.	H	D
CONO 40 - D. 40 SC	2225	300	40
CONO 50 - D. 50 SC	2229	350	50

**Tolleranze della barra**

- Rettilineità = 0,003
- Rotondità in rotazione = 0,003
- Cilindricità = 0,003

Bars tolerance

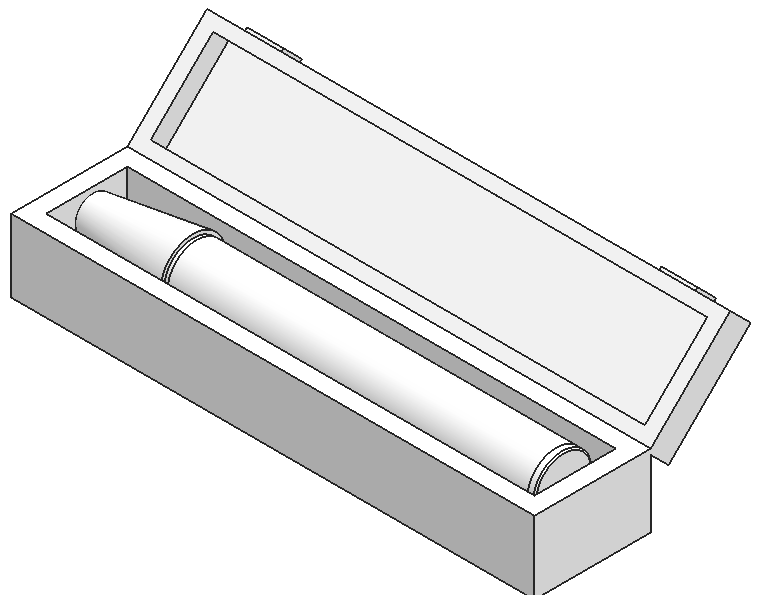
- Straightnes = 0,003
- Runout accuracy = 0,003
- Cylindricity = 0,003

Dati costruttivi

- Costruite in acciaio da cementazione certificato
- Cementate con profondità 0,4 - 0,5 mm
- Temprate, rinvenute, brunite
- Durezza HRC 58 ± 2, resistenza 800-1000 N/mm²
- Finitura di rettifica esterna
- Collaudate 100% con strumenti di misura certificati

Constructive Features

- Manufactured with casehardening steel
- Casehardened with depth 0,4 - 0,5 mm
- Hardened, tempered, black oxidized
- Hardnes HRC 58 ± 2, strenght 800-1000 N/mm²
- External grinding finish
- Tested 100% with certified measuring instruments



Balanced G 6,3
12.000 rpm

TIPO	FORMA	FORMA	D	H	E	Fig.	G1	G2
	A	B						
	Art.	Art.						
TC 40 - WE 12/H 35	3079	8341	12	35	44	1	4973	—
TC 40 - WE 14/H 35	8338	8342	14	35	44	1	0390	—
TC 40 - WE 16/H 35	3080	2231	16	35	44	1	0068	—
TC 40 - WE 18/H 35	8339	8343	18	35	44	1	0261	—
TC 40 - WE 20/H 35	3081	2242	20	35	44	1	0070	—
TC 40 - WE 25/H 35	3082	2243	25	35	44	1	0076	—
TC 40 - WE 25/H 60	3015	4641		60	49	2	0076	0076
TC 40 - WE 32/H 40	3083	4642	32	40	44	1	0074	—
TC 40 - WE 32/H 70	4640	4643		70	72	2	0082	4977
TC 45 - WE 25/H 35	3085	—	25	35	57	1	0075	—
TC 50 - WE 16/H 35	3086	2234	16	35	70	1	4974	—
TC 50 - WE 18/H 35	8340	8344	18	35	70	1	4974	—
TC 50 - WE 20/H 35	3087	2237	20	35	70	1	4975	—
TC 50 - WE 25/H 35	3088	2251	25	35	70	1	4976	—
TC 50 - WE 32/H 35	3089	2252	32	35	70	1	4977	—
TC 50 - WE 40/H 35	3136	8345	40	35	70	1	0259	—

WELDON EXTRACORTO

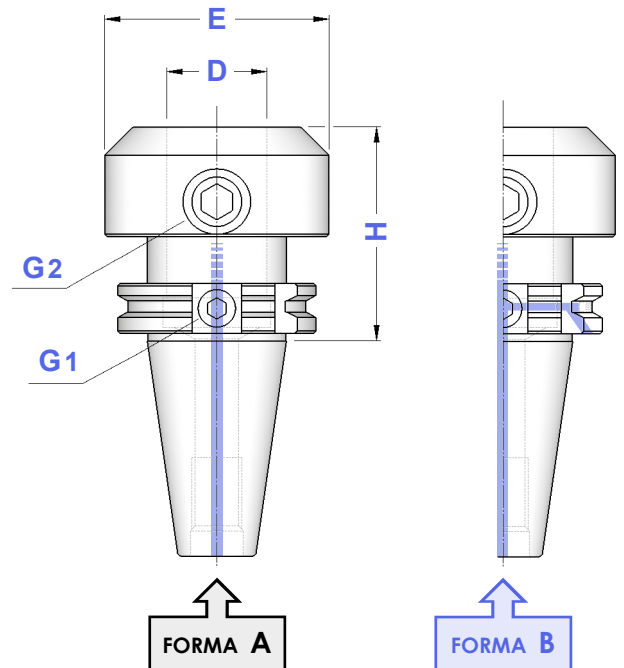
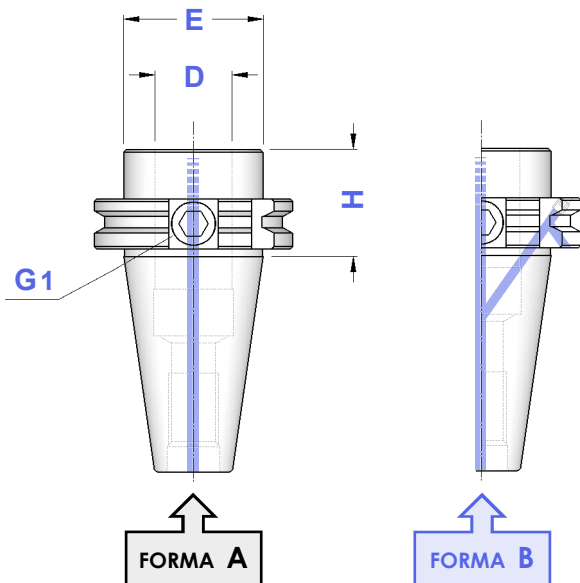
SHORT TYPE END MILL

Figura 1

WELDON EXTRACORTO

SHORT TYPE END MILL

Figura 2



Balanced	G 6,3
≤ H100	12.000 rpm
> H100	8.000 rpm

Figura 1

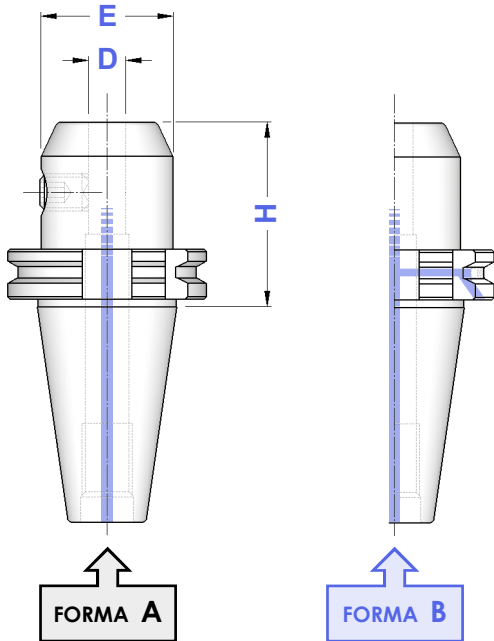
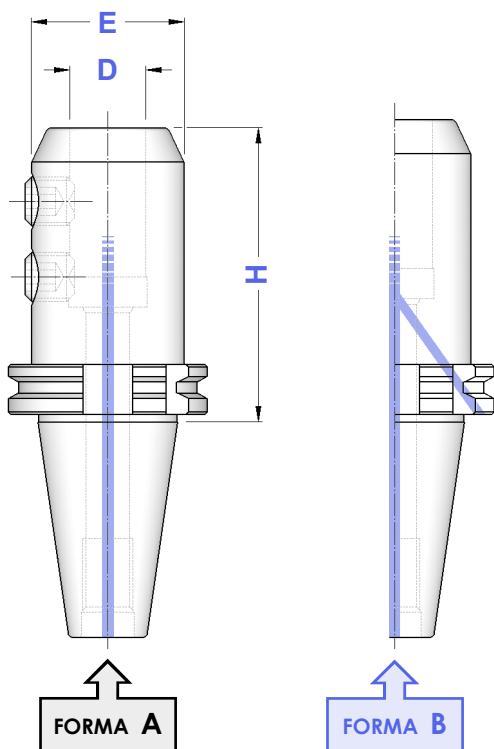
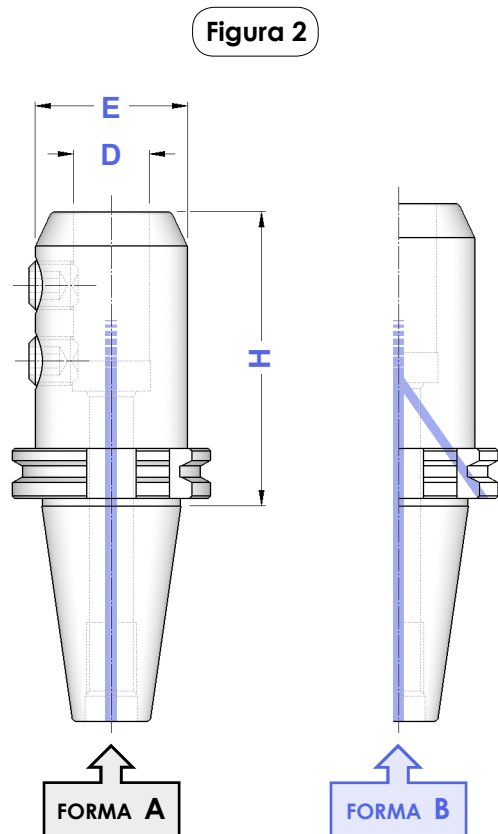
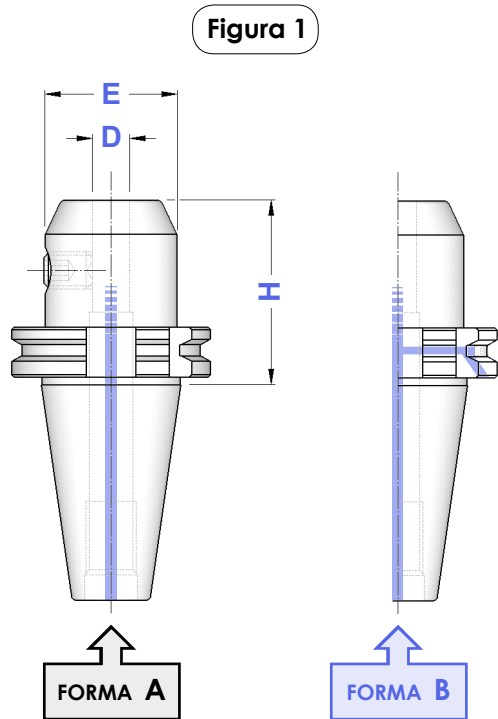


Figura 2



TIPO	FORMA		D	H	E	Fig.	Fig.
	A	B					
TC 30 - WE 6/H 45	3707	—	6	45	25	1	4970
TC 30 - WE 8/H 45	3708	—	8	45	28	1	4971
TC 30 - WE 10/H 50	3709	—	10	50	35	1	4972
TC 30 - WE 12/H 50	3710	—	12	50	42	1	4973
TC 30 - WE 16/H 70	3711	—	16	70	48	1	4974
TC 30 - WE 20/H 70	3712	—	20	70	52	1	4975
TC 40 - WE 6/H 50	3714	4761	6	50	25	1	4970
TC 40 - WE 6/H100	5001	5028		100			
TC 40 - WE 6/H130	5400	5416		130			
TC 40 - WE 6/H160	5519	5551		160			
TC 40 - WE 6/H200	4029	4144		200			
TC 40 - WE 8/H 50	3715	4762	8	50	28	1	4971
TC 40 - WE 8/H100	5002	5029		100			
TC 40 - WE 8/H130	5401	5417		130			
TC 40 - WE 8/H160	5520	5552		160			
TC 40 - WE 8/H200	4030	4146		200			
TC 40 - WE 10/H 50	3716	4763	10	50	35	1	4972
TC 40 - WE 10/H100	5003	5030		100			
TC 40 - WE 10/H130	5402	5418		130			
TC 40 - WE 10/H160	5521	5553		160			
TC 40 - WE 10/H200	4031	4148		200			
TC 40 - WE 12/H 50	3717	4764	12	50	42	1	4973
TC 40 - WE 12/H100	5004	5031		100			
TC 40 - WE 12/H130	5403	5419		130			
TC 40 - WE 12/H160	5524	5554		160			
TC 40 - WE 12/H200	4032	4150		200			
TC 40 - WE 14/H 50	3594	4765	14	50	44	1	4973
TC 40 - WE 14/H100	5005	5032		100			
TC 40 - WE 14/H130	4033	4155		130			
TC 40 - WE 14/H160	4034	4157		160			
TC 40 - WE 14/H200	4035	4158		200			
TC 40 - WE 16/H 63	3718	4766	16	63	48	1	4974
TC 40 - WE 16/H100	5006	5033		100			
TC 40 - WE 16/H130	5404	5420		130			
TC 40 - WE 16/H160	5007	5035		160			
TC 40 - WE 16/H200	4036	4159		200			
TC 40 - WE 18/H 63	3595	4767	18	63	50	1	4974
TC 40 - WE 18/H100	5008	5036		100			
TC 40 - WE 18/H130	4037	4160		130			
TC 40 - WE 18/H160	4038	4162		160			
TC 40 - WE 18/H200	4039	4163		200			
TC 40 - WE 20/H 63	3719	4768	20	63	52	1	4975
TC 40 - WE 20/H100	5010	5038		100			
TC 40 - WE 20/H130	5011	5039		130			
TC 40 - WE 20/H160	5012	5040		160			
TC 40 - WE 20/H200	4043	4164		200			
TC 40 - WE 25/H100	3720	4769	25	100	65	2	4976
TC 40 - WE 25/H130	5013	5041		130			
TC 40 - WE 25/H160	5014	5042		160			
TC 40 - WE 25/H200	4044	4166		200			
TC 40 - WE 32/H100	3721	4770	32	100	72	2	4977
TC 40 - WE 32/H130	5015	5043		130			
TC 40 - WE 32/H160	5016	5044		160			
TC 40 - WE 32/H200	4045	4168		200			
TC 40 - WE 40/H115	4457	4771	40	115	80	2	4977

segue ➡

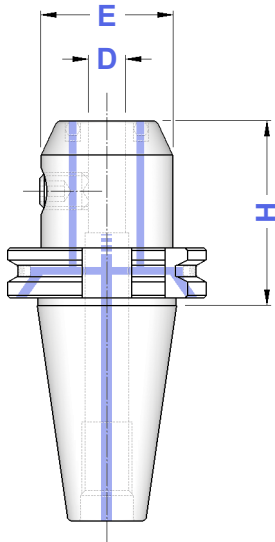


TIPO	FORMA	FORMA	D	H	E	Fig.	Fig.
	A	B					
	Art.	Art.					
TC 45 - WE 6/H 63	3722	---	6	63	25	1	4970
TC 45 - WE 8/H 63	3723	---	8	63	28	1	4971
TC 45 - WE 10/H 63	3724	---	10	63	35	1	4972
TC 45 - WE 12/H 63	3725	---	12	63	42	1	4973
TC 45 - WE 16/H 63	3726	---	16	63	48	1	4974
TC 45 - WE 20/H 63	3727	---	20	63	52	1	4975
TC 45 - WE 25/H100	3728	---	25	100	65	2	4976
TC 45 - WE 32/H100	3729	---	32	100	72	2	4977
TC 45 - WE 40/H100	4515	---	40	100	80	2	4977
TC 50 - WE 6/H 63	3730	4783	6	63	25	1	4970
TC 50 - WE 6/H100	5017	5045		100			
TC 50 - WE 6/H130	5405	5426		130			
TC 50 - WE 6/H160	5525	5555		160			
TC 50 - WE 6/H200	4123	4173		200			
TC 50 - WE 8/H 63	3731	4784	8	63	28	1	4971
TC 50 - WE 8/H100	5018	5046		100			
TC 50 - WE 8/H130	5406	5427		130			
TC 50 - WE 8/H160	5526	5556		160			
TC 50 - WE 8/H200	4125	4175		200			
TC 50 - WE 10/H 63	3732	4785	10	63	35	1	4972
TC 50 - WE 10/H100	5019	5047		100			
TC 50 - WE 10/H130	5407	5428		130			
TC 50 - WE 10/H160	5527	5558		160			
TC 50 - WE 10/H200	4128	4177		200			
TC 50 - WE 12/H 63	3733	4786	12	63	42	1	4973
TC 50 - WE 12/H100	5528	5559		100			
TC 50 - WE 12/H130	5408	5429		130			
TC 50 - WE 12/H160	5020	5048		160			
TC 50 - WE 12/H200	4129	4179		200			
TC 50 - WE 14/H 63	4516	4787	14	63	44	1	4973
TC 50 - WE 14/H100	5529	5560		100			
TC 50 - WE 14/H130	4130	4182		130			
TC 50 - WE 14/H160	4132	4183		160			
TC 50 - WE 14/H200	4134	4204		200			
TC 50 - WE 16/H 63	3734	4788	16	63	48	1	4974
TC 50 - WE 16/H100	5534	5561		100			
TC 50 - WE 16/H130	5409	5430		130			
TC 50 - WE 16/H160	5022	5050		160			
TC 50 - WE 16/H200	4136	4206		200			
TC 50 - WE 18/H 63	4517	4789	18	63	50	1	4974
TC 50 - WE 18/H100	5535	5562		100			
TC 50 - WE 18/H130	4137	4213		130			
TC 50 - WE 18/H160	4138	4215		160			
TC 50 - WE 18/H200	4139	4236		200			
TC 50 - WE 20/H 63	3735	4790	20	63	52	1	4975
TC 50 - WE 20/H100	5536	5563		100			
TC 50 - WE 20/H130	5410	5431		130			
TC 50 - WE 20/H160	5024	5052		160			
TC 50 - WE 20/H200	4140	4242		200			
TC 50 - WE 25/H 80	3736	4791	25	80	65	2	4976
TC 50 - WE 25/H100	5413	5051		100			
TC 50 - WE 25/H130	5414	5432		130			
TC 50 - WE 25/H160	5025	5054		160			
TC 50 - WE 25/H200	4141	4244		200			
TC 50 - WE 32/H100	3737	4792	32	100	72	2	4977
TC 50 - WE 32/H130	5415	5433		130			
TC 50 - WE 32/H160	5026	5055		160			
TC 50 - WE 32/H200	4142	4245		200			
TC 50 - WE 40/H120	3738	4793	40	120	80	2	4977
TC 50 - WE 40/H160	5027	5056		160			
TC 50 - WE 50/H120	3739	4247	50	120	97	2	4978

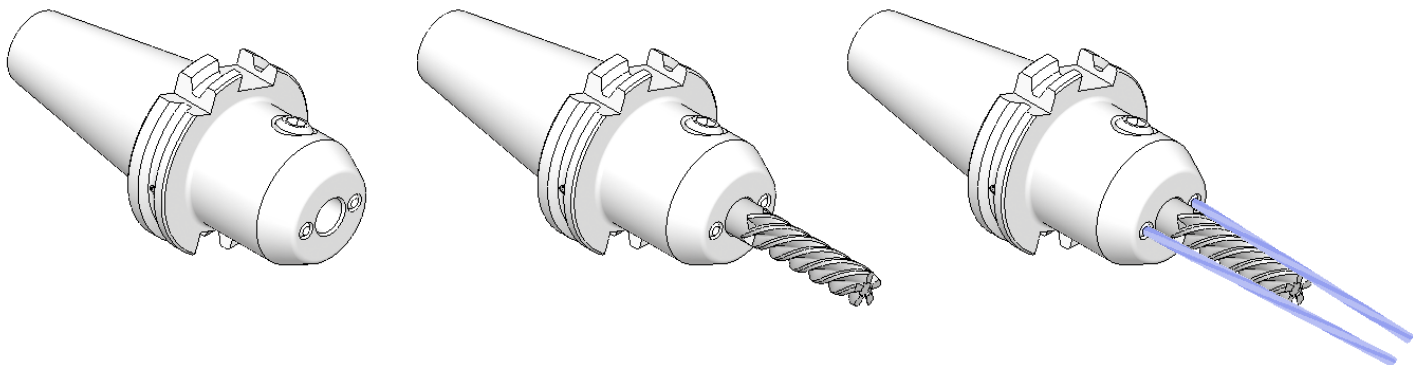
DIN 69871**PORTAFRESE WELDON CON SFERE DI LUBRIFICAZIONE**
TOOLHOLDERS FOR DIN 1835-B SHANKS WITH FRONT COOLANT**FORMA B (AD+B)**

Balanced G 6,3

12.000 rpm

**FORMA B**

TIPO	Art.	D	H	E	
TC 40 - WEC 6/H 50	7850	6	50	25	4970
TC 40 - WEC 8/H 50	7851	8	50	28	4971
TC 40 - WEC 10/H 50	7852	10	50	35	4972
TC 40 - WEC 12/H 50	7853	12	50	42	4973
TC 40 - WEC 14/H 50	7854	14	50	44	4973
TC 40 - WEC 16/H 63	7855	16	63	48	4974
TC 40 - WEC 18/H 63	7856	18	63	50	4974
TC 40 - WEC 20/H 63	7857	20	63	52	4975
TC 40 - WEC 25/H 100	7858	25	100	65	4976
TC 40 - WEC 32/H 100	7859	32	100	72	4977
TC 40 - WEC 40/H 115	7860	40	115	80	4977
TC 50 - WEC 6/H 63	7861	6	63	25	4970
TC 50 - WEC 8/H 63	7862	8	63	28	4971
TC 50 - WEC 10/H 63	7863	10	63	35	4972
TC 50 - WEC 12/H 63	7864	12	63	42	4973
TC 50 - WEC 14/H 63	7865	14	63	44	4973
TC 50 - WEC 16/H 63	7866	16	63	48	4974
TC 50 - WEC 18/H 63	7867	18	63	50	4974
TC 50 - WEC 20/H 63	7868	20	63	52	4975
TC 50 - WEC 25/H 80	7869	25	80	65	4976
TC 50 - WEC 32/H 100	7870	32	100	72	4977
TC 50 - WEC 40/H 120	7871	40	120	80	4977

**Dove trovare questi Articoli nel Catalogo Generale***Where to find those Items on General Catalogue***Ugelli a sfera - pag. 263***Sphere coolant nozzles - page 263***Prolunghe per ugelli - pag. 263***Extensions for coolant nozzles - page 263*

Balanced G 6,3
12.000 rpm

Figura 1

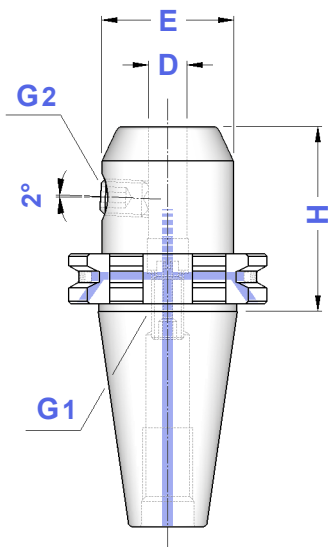
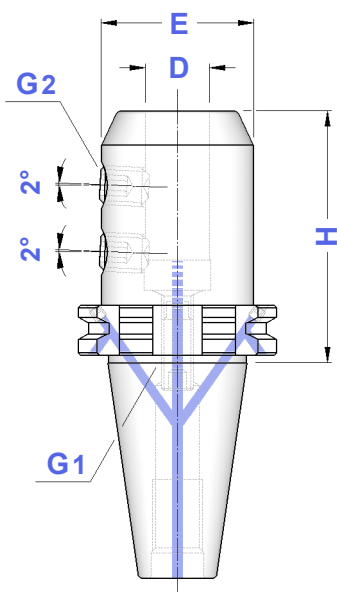


Figura 2



FORMA
B



TIPO	Art.	D	H	E	Fig.	G1	G2
TC 40 - WN 6 / H 50	4795	6	50	25	1	0233	4970
TC 40 - WN 8 / H 50	4796	8	50	28	1	0235	4971
TC 40 - WN10 / H 50	4797	10	50	35	1	0238	4972
TC 40 - WN12 / H 50	4798	12	50	42	1	0240	4973
TC 40 - WN14 / H 50	4799	14	50	44	1	0240	4973
TC 40 - WN16 / H 63	4800	16	63	48	1	0245	4974
TC 40 - WN18 / H 63	4801	18	63	50	1	0245	4974
TC 40 - WN20 / H 63	4802	20	63	52	1	0245	4975
TC 40 - WN25 / H 100	4803	25	100	65	2	0212	4976
TC 40 - WN32 / H 100	4804	32	100	72	2	0212	4977
TC 40 - WN40 / H 115	4805	40	115	80	2	0212	4977
TC 50 - WN 6 / H 63	4815	6	63	25	1	0233	4970
TC 50 - WN 8 / H 63	4816	8	63	28	1	0235	4971
TC 50 - WN10 / H 63	4817	10	63	35	1	0238	4972
TC 50 - WN12 / H 63	4818	12	63	42	1	0240	4973
TC 50 - WN14 / H 63	4819	14	63	44	1	0240	4973
TC 50 - WN16 / H 63	4820	16	63	48	1	0245	4974
TC 50 - WN18 / H 63	4821	18	63	50	1	0245	4974
TC 50 - WN20 / H 63	4822	20	63	52	1	0245	4975
TC 50 - WN25 / H 80	4823	25	80	65	2	0247	4976
TC 50 - WN32 / H 100	4824	32	100	72	2	0247	4977
TC 50 - WN40 / H 120	4825	40	120	80	2	0247	4977

**Dove trovare questi Articoli
nel Catalogo Generale**

*Where to find those Items
on General Catalogue*



Grani di bloccaggio - pag. 197
Locking screws - page 197



Grani di bloccaggio - pag. 199
Locking screws - page 199

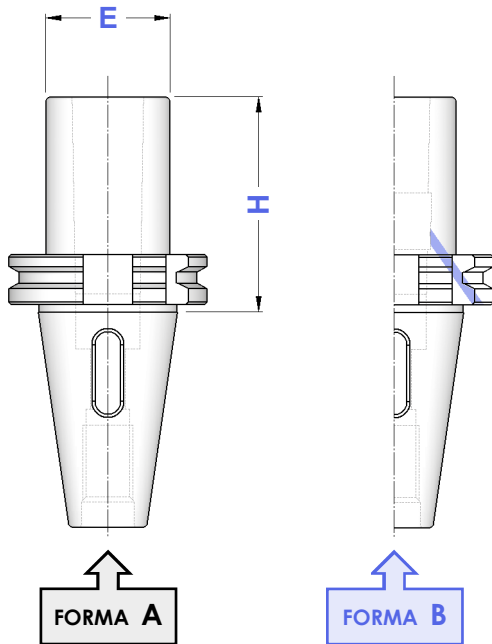
DIN 69871

RIDUZIONI A CONO MORSE PER PUNTE MORSE TAPER ADAPTERS FOR TWIST DRILLS DIN 228 FORM B SHANK

FORMA A

FORMA B

Balanced G 6,3
8.000 rpm



TIPO	FORMA A	FORMA B	CM	H	E
	Art.	Art.			
TC 30 - CM 1 PUNTE	3600	—	1	55	25
TC 30 - CM 2 PUNTE	3631	—	2	65	32
TC 30 - CM 3 PUNTE	3632	—	3	90	40
TC 40 - CM 1 PUNTE	3601	4826	1	50	25
TC 40 - CM 2 PUNTE	3602	4827	2	60	32
TC 40 - CM 3 PUNTE	3635	4828	3	70	40
TC 40 - CM 4 PUNTE	3636	4829	4	95	48
TC 50 - CM 1 PUNTE	3603	—	1	45	25
TC 50 - CM 2 PUNTE	3604	4835	2	60	32
TC 50 - CM 3 PUNTE	3605	4836	3	65	40
TC 50 - CM 4 PUNTE	3645	4837	4	95	48
TC 50 - CM 5 PUNTE	3646	4838	5	120	63

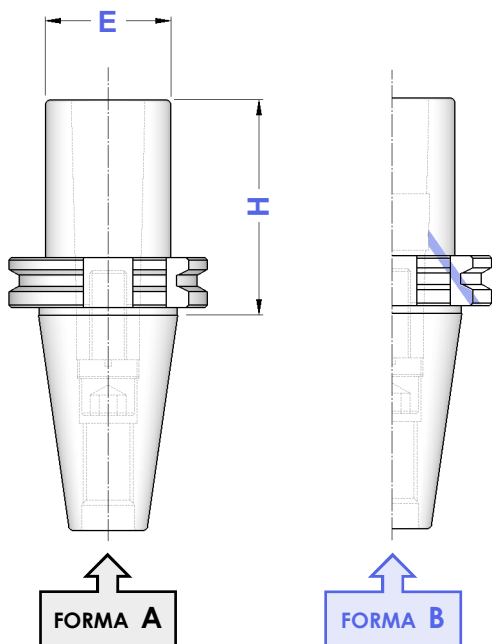
DIN 69871




RIDUZIONI A CONO MORSE PER FRESE MORSE TAPER ADAPTERS FOR MILLING CUTTERS DIN 228 FORM A SHANK

FORMA A

FORMA B

Balanced G 6,3
8.000 rpm



TIPO	FORMA A	FORMA B	CM	H	E			
	Art.	Art.						
TC 30 - CM 2 FRESE	3892	—	2	60	32	7448	7422	4569
TC 30 - CM 3 FRESE	3893	—	3	80	40	7402	7423	4570
TC 40 - CM 2 FRESE	3681	4840	2	50	32	7448	7422	4569
TC 40 - CM 3 FRESE	3894	4841	3	70	40	7403	7423	4570
TC 40 - CM 4 FRESE	3895	4842	4	95	48	7404	7424	4571
TC 50 - CM 2 FRESE	3666	4848	2	60	32	7448	7422	4569
TC 50 - CM 3 FRESE	3897	4849	3	65	40	7403	7423	4570
TC 50 - CM 4 FRESE	3898	4850	4	95	48	7407	7424	4571
TC 50 - CM 5 FRESE	3899	4851	5	120	63	7408	7425	4572

DIN 69871

RIDUZIONI A CONO MORSE PUNTE+FRESE COMBINATE

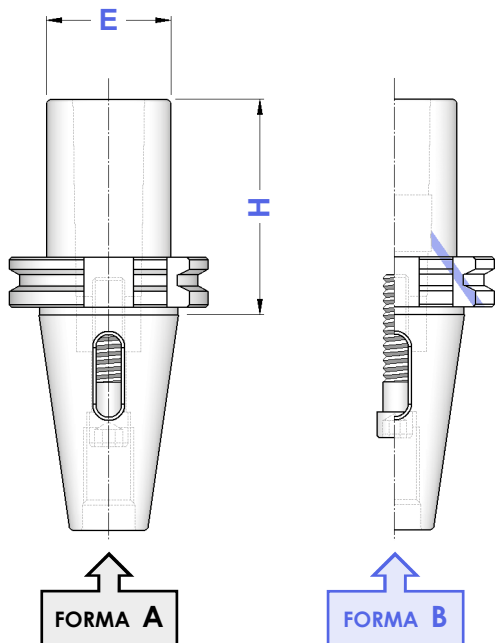
COMBI MORSE TAPER ADAPTERS: TWIST DRILLS + MILLING CUTTERS



FORMA A

FORMA B

Balanced G 6,3

8.000 rpm



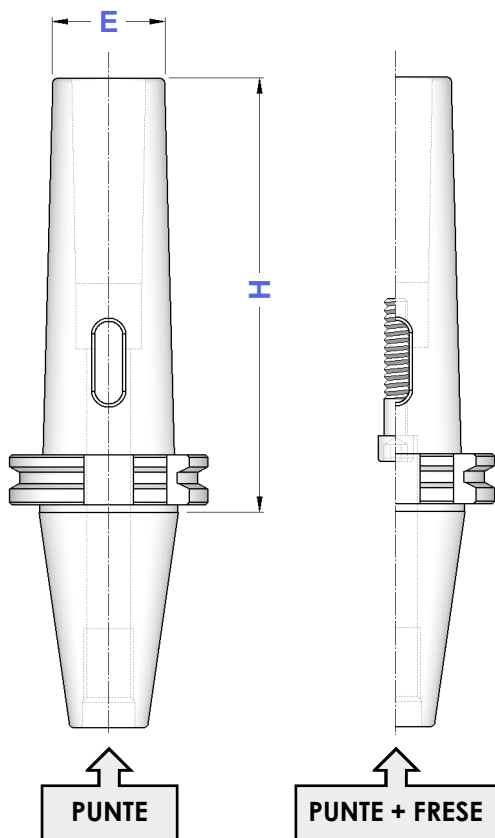
TIPO	FORMA A	FORMA B	CM	H	E		
	Art.	Art.					
TC 30 - CM 1 P+F	3630	—	1	55	25	7415	—
TC 30 - CM 2 P+F	3606	—	2	65	32	7400	0276
TC 30 - CM 3 P+F	3608	—	3	90	40	7418	0130
TC 40 - CM 1 P+F	3633	8740	1	50	25	7400	—
TC 40 - CM 2 P+F	3634	8741	2	60	32	7401	—
TC 40 - CM 3 P+F	3607	8742	3	70	40	7400	0130
TC 45 - CM 1 P+F	3637	—	1	50	25	7400	—
TC 45 - CM 2 P+F	3638	—	2	60	32	7405	—
TC 45 - CM 3 P+F	3639	—	3	80	40	7455	—
TC 45 - CM 4 P+F	3641	—	4	100	48	0056	0129
TC 50 - CM 1 P+F	3642	—	1	45	25	7400	—
TC 50 - CM 2 P+F	3643	8743	2	60	32	7405	—
TC 50 - CM 3 P+F	3644	8744	3	65	40	7406	—
TC 50 - CM 4 P+F	3682	8745	4	95	48	7409	—
TC 50 - CM 5 P+F	3683	8746	5	120	63	7406	0131



DIN 69871

RIDUZIONI A CONO MORSE PER PUNTE E PUNTE+FRESE TIPO PROLUNGATO

EXTENDED MORSE TAPER ADAPTERS: TWIST DRILLS + MILLING CUTTERS

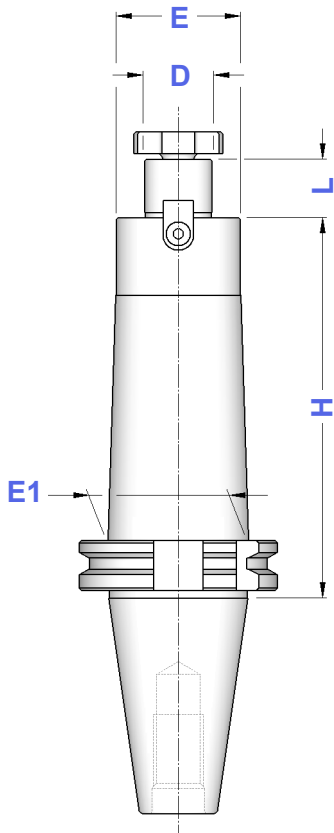
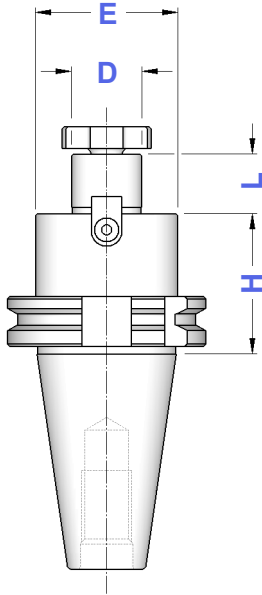
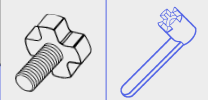
FORMA A



TIPO	PUNTE	PUNTE + FRESE	CM	H	E		
	Art.	Art.					
TC 40 - CM 1	3778	4238	1	115	18	7400	—
TC 40 - CM 2	3779	4239	2	125	25	7401	—
TC 40 - CM 3	3780	4240	3	140	33	7400	0130
TC 40 - CM 4	4241	—	4	165	40	—	—
TC 45 - CM 1	—	3684	1	120	18	7400	—
TC 45 - CM 2	—	3685	2	130	25	7405	—
TC 45 - CM 3	—	3686	3	140	33	7455	—
TC 45 - CM 4	—	3687	4	160	40	0056	0129
TC 50 - CM 1	3745	4248	1	120	18	7400	—
TC 50 - CM 2	3746	4249	2	140	25	7405	—
TC 50 - CM 3	3747	4250	3	150	33	7406	—
TC 50 - CM 4	3748	4251	4	180	40	7409	—
TC 50 - CM 5	3749	4252	5	220	55	0055	0131

Balanced G 6,3
8.000 rpm

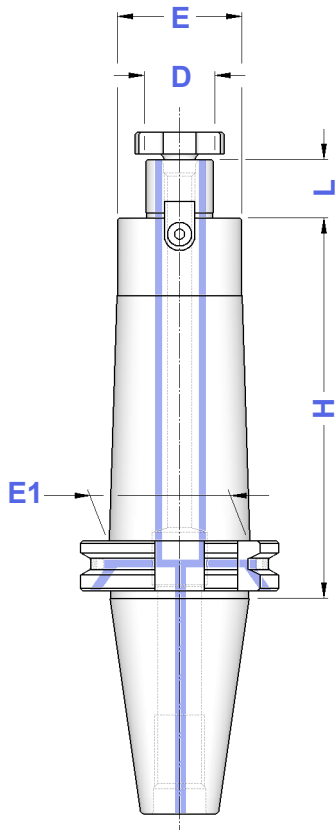
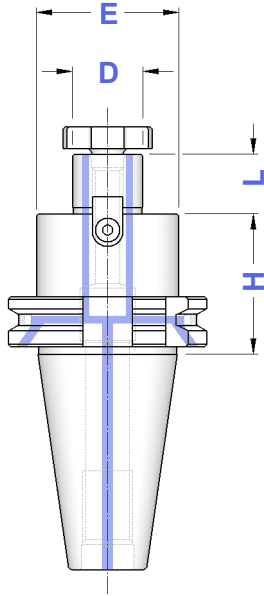
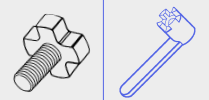
FORMA
A



TIPO	Art.	D	L	E	E1		
TC 30 - D. 13 FISSO / H 35	3940	13	12	28	28	0482	—
TC 30 - D. 16 FISSO / H 35	4122	16	17	38	38	4985	4562
TC 30 - D. 22 FISSO / H 50	4124	22	19	48	48	4986	4563
TC 30 - D. 27 FISSO / H 50	4126	27	21	58	58	4987	4564
TC 30 - D. 32 FISSO / H 55	4143	32	24	58	58	4988	4565
TC 40 - D. 13 FISSO / H 45	8363	13	12	28	28	0482	—
TC 40 - D. 16 FISSO / H 45	4127	16	17	38	38	4985	4562
TC 40 - D. 16 FISSO / H 100	5537						
TC 40 - D. 16 FISSO / H 130	9400						
TC 40 - D. 16 FISSO / H 160	8364						
TC 40 - D. 16 FISSO / H 200	8365						
TC 40 - D. 22 FISSO / H 45	4652	22	19	48	48	4986	4563
TC 40 - D. 22 FISSO / H 100	5538						
TC 40 - D. 22 FISSO / H 130	9401						
TC 40 - D. 22 FISSO / H 160	5539						
TC 40 - D. 22 FISSO / H 200	8366						
TC 40 - D. 27 FISSO / H 50	4653	27	21	58	58	4987	4564
TC 40 - D. 27 FISSO / H 100	5540						
TC 40 - D. 27 FISSO / H 130	9402						
TC 40 - D. 27 FISSO / H 160	5541						
TC 40 - D. 27 FISSO / H 200	8367						
TC 40 - D. 32 FISSO / H 55	4654	32	24	78	78	4988	4565
TC 40 - D. 32 FISSO / H 100	5542						
TC 40 - D. 32 FISSO / H 160	8368						
TC 40 - D. 40 FISSO / H 55	4655	40	27	88	88	4989	4566
TC 40 - D. 40 FISSO / H 100	4694						
TC 40 - D. 40 FISSO / H 160	8369						
TC 50 - D. 16 FISSO / H 45	4661	16	17	38	38	4985	4562
TC 50 - D. 16 FISSO / H 100	4695						
TC 50 - D. 16 FISSO / H 130	9405						
TC 50 - D. 16 FISSO / H 160	8370						
TC 50 - D. 16 FISSO / H 200	8371						
TC 50 - D. 22 FISSO / H 45	4662	22	19	48	48	4986	4563
TC 50 - D. 22 FISSO / H 100	5544						
TC 50 - D. 22 FISSO / H 130	9406						
TC 50 - D. 22 FISSO / H 160	5545						
TC 50 - D. 22 FISSO / H 200	8372						
TC 50 - D. 22 FISSO / H 250	8373						
TC 50 - D. 22 FISSO / H 300	8374						
TC 50 - D. 27 FISSO / H 45	4663	27	21	58	58	4987	4564
TC 50 - D. 27 FISSO / H 100	5546						
TC 50 - D. 27 FISSO / H 130	9407						
TC 50 - D. 27 FISSO / H 160	5547						
TC 50 - D. 27 FISSO / H 200	8375						
TC 50 - D. 27 FISSO / H 250	8376						
TC 50 - D. 27 FISSO / H 300	8377						
TC 50 - D. 32 FISSO / H 50	4664	32	24	78	78	4988	4565
TC 50 - D. 32 FISSO / H 100	5548						
TC 50 - D. 32 FISSO / H 130	9408						
TC 50 - D. 32 FISSO / H 160	5549						
TC 50 - D. 32 FISSO / H 200	8378						
TC 50 - D. 32 FISSO / H 250	8379						
TC 50 - D. 32 FISSO / H 300	8380						
TC 50 - D. 40 FISSO / H 55	4665	40	27	88	88	4989	4566
TC 50 - D. 40 FISSO / H 100	5550						
TC 50 - D. 40 FISSO / H 160	8381						
TC 50 - D. 40 FISSO / H 200	8382						

Balanced G 6,3
8.000 rpm

FORMA
B



TIPO	Art.	D	L	E	E1		
TCB 40 - D.16 FISSO/H 45	5844	16	17	38	38	4985	4562
TCB 40 - D.16 FISSO/H 100	5845						
TCB 40 - D.16 FISSO/H 130	9410						
TCB 40 - D.16 FISSO/H 160	8385						
TCB 40 - D.16 FISSO/H 200	8386						
TCB 40 - D.22 FISSO/H 45	5846	22	19	46	48	4986	4563
TCB 40 - D.22 FISSO/H 100	5847						
TCB 40 - D.22 FISSO/H 130	9411						
TCB 40 - D.22 FISSO/H 160	8387						
TCB 40 - D.22 FISSO/H 200	8388						
TCB 40 - D.27 FISSO/H 50	5848	27	21	48	48	4987	4564
TCB 40 - D.27 FISSO/H 100	5849						
TCB 40 - D.27 FISSO/H 130	9412						
TCB 40 - D.27 FISSO/H 160	8389						
TCB 40 - D.27 FISSO/H 200	8390						
TCB 40 - D.32 FISSO/H 55	5850	32	24	58	78	4988	4565
TCB 40 - D.32 FISSO/H 100	5851						
TCB 40 - D.32 FISSO/H 160	8391						
TCB 40 - D.40 FISSO/H 55	5852	40	27	70	88	4989	4566
TCB 40 - D.40 FISSO/H 100	8392						
TCB 40 - D.40 FISSO/H 160	8393						
TCB 50 - D.16 FISSO/H 45	5853	16	17	38	38	4985	4562
TCB 50 - D.16 FISSO/H 100	5854						
TCB 50 - D.16 FISSO/H 130	9415						
TCB 50 - D.16 FISSO/H 160	8394						
TCB 50 - D.16 FISSO/H 200	8395						
TCB 50 - D.22 FISSO/H 45	5855	22	19	46	48	4986	4563
TCB 50 - D.22 FISSO/H 100	5856						
TCB 50 - D.22 FISSO/H 130	9416						
TCB 50 - D.22 FISSO/H 160	8396						
TCB 50 - D.22 FISSO/H 200	8397						
TCB 50 - D.22 FISSO/H 250	8398						
TCB 50 - D.22 FISSO/H 300	8399						
TCB 50 - D.27 FISSO/H 45	5857	27	21	55	78	4987	4564
TCB 50 - D.27 FISSO/H 100	5858						
TCB 50 - D.27 FISSO/H 130	9417						
TCB 50 - D.27 FISSO/H 160	8400						
TCB 50 - D.27 FISSO/H 200	8401						
TCB 50 - D.27 FISSO/H 250	8402						
TCB 50 - D.27 FISSO/H 300	8403						
TCB 50 - D.32 FISSO/H 50	5859	32	24	66	78	4988	4565
TCB 50 - D.32 FISSO/H 100	5860						
TCB 50 - D.32 FISSO/H 130	9418						
TCB 50 - D.32 FISSO/H 160	8404						
TCB 50 - D.32 FISSO/H 200	8405						
TCB 50 - D.32 FISSO/H 250	8406						
TCB 50 - D.32 FISSO/H 300	8407						
TCB 50 - D.40 FISSO/H 55	5861	40	27	70	88	4989	4566
TCB 50 - D.40 FISSO/H 100	5862						
TCB 50 - D.40 FISSO/H 160	8408						
TCB 50 - D.40 FISSO/H 200	8409						

	Tasselli - pag. 195 Dowels - page 195		Viti testa a croce - pag. 194 Cross head screws - page 194
	Viti per tassello - pag. 198 Dowel screws - page 198		Chiavi testa a croce - pag. 194 Wrenches cross head - page 194

DIN 69871

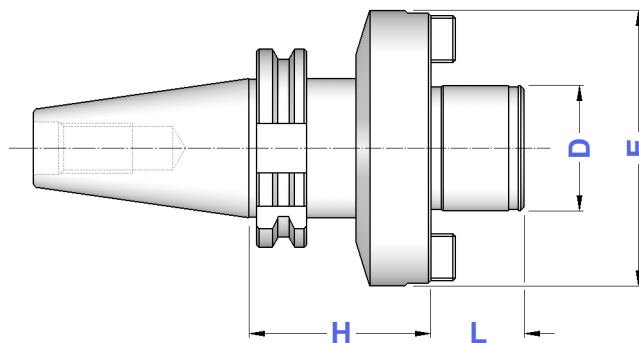
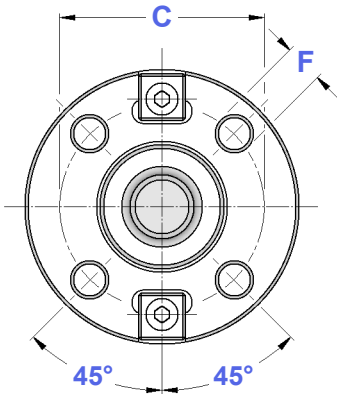
ATTACCHI PER FRESE AD INSERTI FACE MILL HOLDERS FOR FACE MILLING CUTTERS

FORMA A

Balanced G 6,3
8.000 rpm

FORMA A

TIPO	Art.	D	H	L	E	C	F
TC 40 - D. 40 FM	4181	40	60	30	89	66,7	M12
TC 50 - D. 40 FM	4184	40	70	30	89	66,7	M12
TC 50 - D. 60 FM	4185	60	70	40	129	101,6	M16






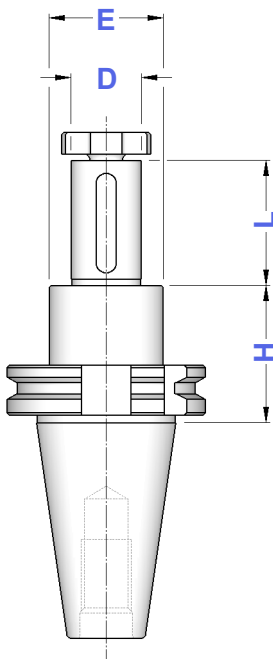
DIN 69871

PORTAFRESE CON CHIAVETTA DI TRASCINAMENTO MILL HOLDERS WITH FEATHER KEY





FORMA A

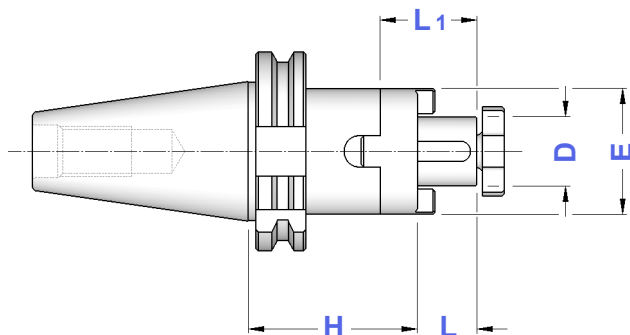
FORMA A

TIPO	Art.	D	H	L	E			
TC 40 - D. 16 CHT	8493	16	45	30	28	0147	4985	4562
TC 40 - D. 22 CHT	8494	22	45	40	36	0148	4986	4563
TC 40 - D. 27 CHT	8495	27	45	60	43	0149	4987	4564
TC 40 - D. 32 CHT	8496	32	45	60	48	0150	4988	4565
TC 40 - D. 40 CHT	8497	40	45	60	56	0151	4989	4566

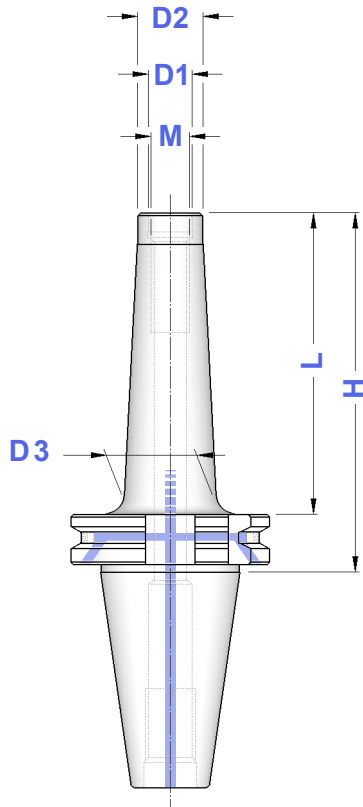


Balanced G 6,3
8.000 rpm

TIPO	FORMA A				D	L1	L	E				
	Art.											
TC 30 - D.16 C/H 50	3828	16	27	17	32	4090	0115	4985	4562			
TC 30 - D.22 C/H 50	3829	22	31	19	40	4091	0116	4986	4563			
TC 30 - D.27 C/H 55	3830	27	33	21	48	4092	0122	4987	4564			
TC 40 - D.16 C/H 55 TC 40 - D.16 C/H 100 TC 40 - D.16 C/H 150	3831 4100 8474	16	27	17	32	4090	0115	4985	4562			
TC 40 - D.22 C/H 55 TC 40 - D.22 C/H 100 TC 40 - D.22 C/H 150	3832 4101 8475	22	31	19	40	4091	0116	4986	4563			
TC 40 - D.27 C/H 55 TC 40 - D.27 C/H 100 TC 40 - D.27 C/H 150	3833 4102 8476	27	33	21	48	4092	0122	4987	4564			
TC 40 - D.32 C/H 60 TC 40 - D.32 C/H 100 TC 40 - D.32 C/H 150	3834 4103 8477	32	38	24	58	4093	0125	4988	4565			
TC 40 - D.40 C/H 60 TC 40 - D.40 C/H 100	3835 3863	40	41	27	70	4094	0133	4989	4566			
TC 45 - D.16 C/H 60	3836	16	27	17	32	4090	0115	4985	4562			
TC 45 - D.22 C/H 65 TC 45 - D.22 C/H 100	3837 4105	22	31	19	40	4091	0116	4986	4563			
TC 45 - D.27 C/H 65 TC 45 - D.27 C/H 100	3838 4106	27	33	21	48	4092	0122	4987	4564			
TC 45 - D.32 C/H 65	3839	32	38	24	58	4093	0125	4988	4565			
TC 45 - D.40 C/H 70	3840	40	41	27	70	4094	0133	4989	4566			
TC 50 - D.16 C/H 55 TC 50 - D.16 C/H 100	3841 4108	16	27	17	32	4090	0115	4985	4562			
TC 50 - D.22 C/H 55 TC 50 - D.22 C/H 100	3842 4109	22	31	19	40	4091	0116	4986	4563			
TC 50 - D.27 C/H 55 TC 50 - D.27 C/H 100	3843 4110	27	33	21	48	4092	0122	4987	4564			
TC 50 - D.32 C/H 55 TC 50 - D.32 C/H 100	3844 4111	32	38	24	58	4093	0125	4988	4565			
TC 50 - D.40 C/H 55 TC 50 - D.40 C/H 100	3845 4112	40	41	27	70	4094	0133	4989	4566			
TC 50 - D.50 C/H 70	4522	50	46	30	90	4095	0137	4990	4567			



Balanced G 6,3
12.000 rpm

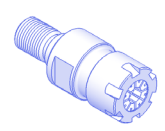
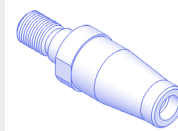
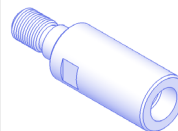


FORMA B

TIPO	Art.	M	D1	D2	D3	H	L
TC 40 - M 6/H 55	7767	M 6	6,5	10	13	55	36
TC 40 - M 6/H 69	7768						
TC 40 - M 6/H 94	7769						
TC 40 - M 8/H 55	7800	M 8	8,5	13	15	55	36
TC 40 - M 8/H 69	7801						
TC 40 - M 8/H 94	7802						
TC 40 - M 8/H 119	7803						
TC 40 - M 10/H 55	7804	M 10	10,5	18	20	55	36
TC 40 - M 10/H 69	7805						
TC 40 - M 10/H 94	7806						
TC 40 - M 10/H 119	7807						
TC 40 - M 10/H 145	7808						
TC 40 - M 10/H 145	7808						
TC 40 - M 12/H 55	7809	M 12	12,5	21	24	55	36
TC 40 - M 12/H 69	7810						
TC 40 - M 12/H 94	7811						
TC 40 - M 12/H 119	7812						
TC 40 - M 12/H 145	7813						
TC 40 - M 12/H 145	7813						
TC 40 - M 12/H 175	7814						
TC 40 - M 16/H 55	7815	M 16	17,0	29	32	55	36
TC 40 - M 16/H 69	7816						
TC 40 - M 16/H 94	7817						
TC 40 - M 16/H 119	7818						
TC 40 - M 16/H 145	7819						
TC 40 - M 16/H 145	7819						
TC 40 - M 16/H 175	7820						
TC 40 - M 16/H 175	7820						
TC 40 - M 16/H 195	7999						
TC 50 - M 10/H 69	8713	M 10	10,5	18	19,5	69	50
TC 50 - M 10/H 119	8714						
TC 50 - M 10/H 169	8715						
TC 50 - M 12/H 69	7821	M 12	12,5	21	24	69	50
TC 50 - M 12/H 119	7822						
TC 50 - M 12/H 169	7823						
TC 50 - M 12/H 235	8716						
TC 50 - M 16/H 69	7824	M 16	17,0	29	34	69	50
TC 50 - M 16/H 119	7825						
TC 50 - M 16/H 169	7826						
TC 50 - M 16/H 169	7826						
TC 50 - M 16/H 235	8717						

Prolunghe, Riduzioni, Portapinze ER con attacco filettato a pag. 43 del Catalogo Generale

Extensions, Reductions, ER Collet Chucks with threaded shank from page 43 on General Catalogue

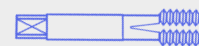


DIN 69871

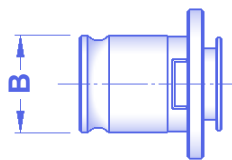
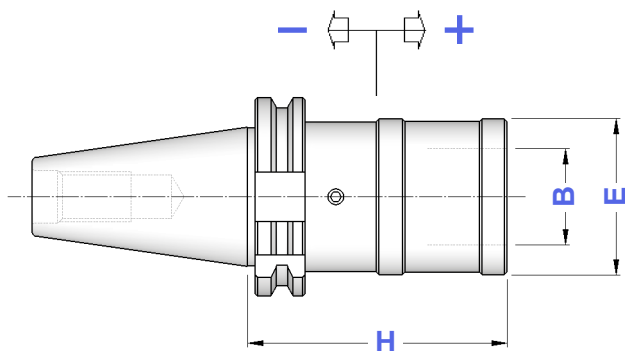
**MASCHIATORI A CAMBIO RAPIDO CON
DOPPIA COMPENSAZIONE**
DOUBLE COMPENSATION QUICK CHANGE TAP HOLDERS

FORMA A**FORMA
A**

TIPO	Art.	H	E	B	COMPENSAZIONE	
TC 30 - B.1	2995	74	38	19	- 7,5 + 7,5	M 3 ÷ M 12 (*M16)
TC 30 - B.2	2996	98	55	31	- 12,5 + 12,5	M 6 ÷ M 20 (*M30)
TC 40 - B.1	3377	60	38	19	- 7,5 + 7,5	M 3 ÷ M 12 (*M16)
TC 40 - B.2	3378	98	55	31	- 12,5 + 12,5	M 6 ÷ M 20 (*M30)
TC 40 - B.3	3379	138	79	48	- 20,0 + 20,0	M14 ÷ M 33 (*M48)
TC 45 - B.1	3380	60	38	19	- 7,5 + 7,5	M 3 ÷ M 12 (*M16)
TC 45 - B.2	3381	84	55	31	- 12,5 + 12,5	M 6 ÷ M 20 (*M30)
TC 50 - B.1	4151	60	38	19	- 7,5 + 7,5	M 3 ÷ M 12 (*M16)
TC 50 - B.2	3383	83	55	31	- 12,5 + 12,5	M 6 ÷ M 20 (*M30)
TC 50 - B.3	3384	133	79	48	- 20,0 + 20,0	M14 ÷ M 33 (*M48)



* Bussole con grani
Adapters with screws



**Bussole a Maschiare da pag. 172
a pag. 175 del Catalogo Generale**
*Tap Adapters on General Catalogue
from page 172 to page 175*

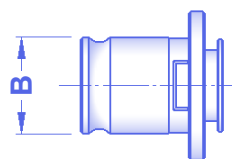
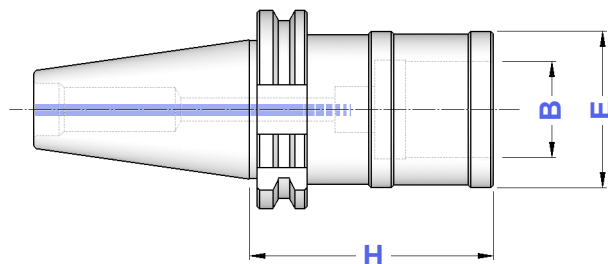
DIN 69871

**MASCHIATORI A CAMBIO RAPIDO
SENZA COMPENSAZIONE**
QUICK CHANGE TAP HOLDERS WITHOUT COMPENSATION

FORMA A (AD)**FORMA
A**

TIPO	Art.	H	E	B	
TC 30 - B.1 FISSO	4946	72	33	19	M 3 ÷ M 12 (*M16)
TC 30 - B.2 FISSO	4947	91	50	31	M 6 ÷ M 20 (*M30)
TC 40 - B.1 FISSO	4948	59	33	19	M 3 ÷ M 12 (*M16)
TC 40 - B.2 FISSO	4949	86	50	31	M 6 ÷ M 20 (*M30)
TC 40 - B.3 FISSO	4991	122	72	48	M14 ÷ M 33 (*M48)
TC 50 - B.1 FISSO	3062	75	33	19	M 3 ÷ M 12 (*M16)
TC 50 - B.2 FISSO	4950	98	50	31	M 6 ÷ M 20 (*M30)
TC 50 - B.3 FISSO	4992	122	72	48	M14 ÷ M 33 (*M48)

* Bussole con grani
Adapters with screws



**Bussole a Maschiare da pag. 172
a pag. 175 del Catalogo Generale**
*Tap Adapters on General Catalogue
from page 172 to page 175*

I maschiatori sono fornibili anche con la sola compensazione a trazione (SFILAMENTO)
Tap holders are also available with traction compensation only (TENSION ONLY)