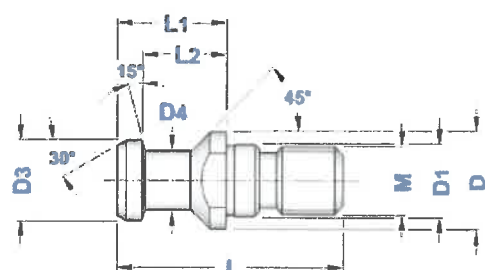
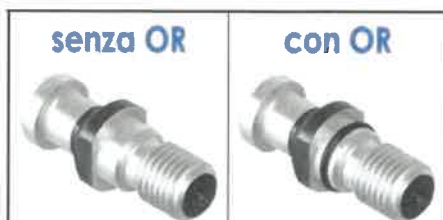




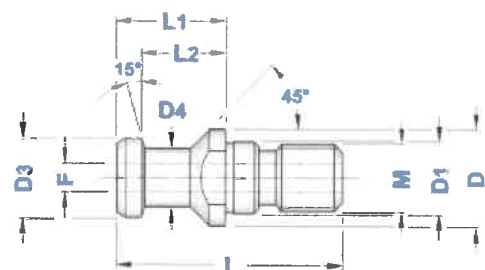
<b>DIN 69872</b>	<b>CODOLI DIN 69872</b> DIN 69872 PULL STUD BOLTS
----------------------	--



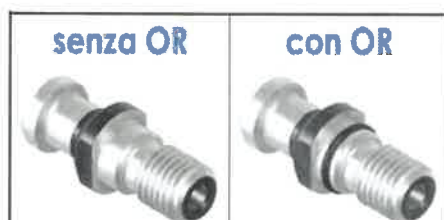
WITHOUT COOLANT BORE



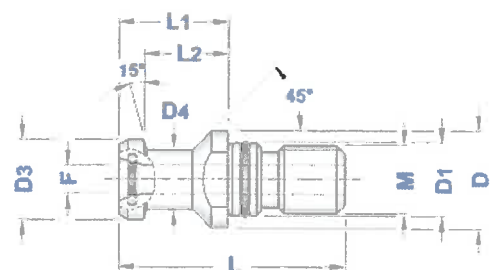
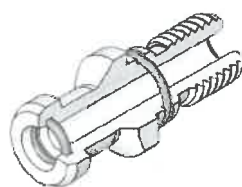
TIPO	Art.	Art.	M	D	D1	D3	D4	L	L1	L2
69872 ISO 30 - NON FORATO	3489	—	M12	17	13	13	9	44	24	19
69872 ISO 40 - NON FORATO	4573	3268	M16	23	17	19	14	54	26	20
69872 ISO 45 - NON FORATO	4574	—	M20	30	21	23	17	65	30	23
69872 ISO 50 - NON FORATO	4575	3270	M24	36	25	28	21	74	34	25



WITH COOLANT BORE



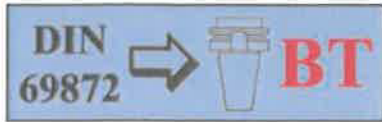
TIPO	Art.	Art.	M	D	D1	D3	D4	L	L1	L2	F
69872 ISO 30 - FORATO	3423	—	M12	17	13	13	9	44	24	19	3
69872 ISO 40 - FORATO	3476	3040	M16	23	17	19	14	54	26	20	7
69872 ISO 45 - FORATO	3477	—	M20	30	21	23	17	65	30	23	9,5
69872 ISO 50 - FORATO	3478	3042	M24	36	25	28	21	74	34	25	11,5



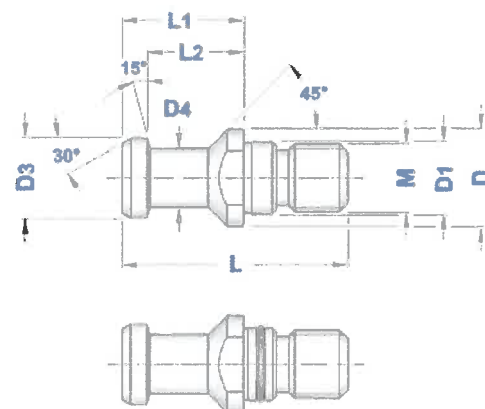
WITH COOLANT BORE  
and DOUBLE O-Ring

TIPO	Art.	M	D	D1	D3	D4	L	L1	L2	F
69872 ISO 40 - FORATO con DOPPIO OR	3222	M16	23	17	19	14	54	26	20	7
69872 ISO 50 - FORATO con DOPPIO OR	3223	M24	36	25	28	21	74	34	25	11,5

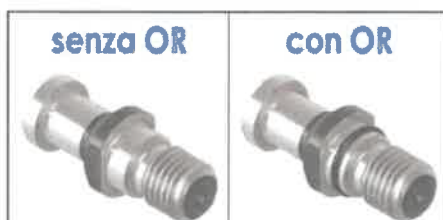




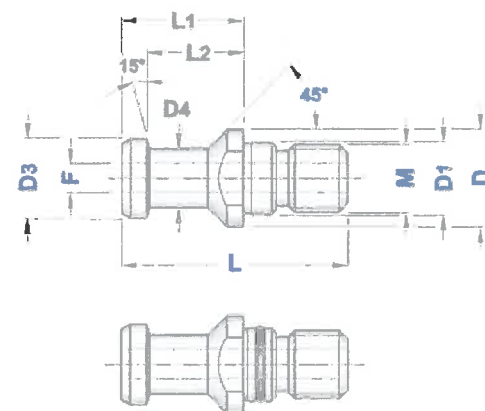
**CODOLI TIPO DIN 69872 ADATTI per CONI BT**  
 DIN 69872 TYPE PULL STUD BOLTS suitable for BT SHANKS



WITHOUT COOLANT BORE



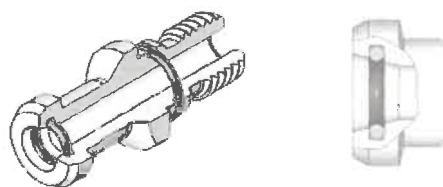
TIPO	Art.	Art.	M	D	D1	D3	D4	L	L1	L2
69872/ <b>BT 40</b> - NON FORATO	3157	3158	M16	23	17	19	14	54	29	23



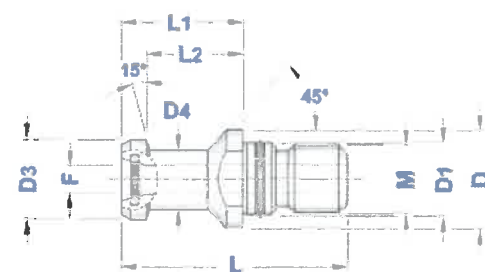
WITH COOLANT BORE



TIPO	Art.	Art.	M	D	D1	D3	D4	L	L1	L2	F
69872/ <b>BT 40</b> - FORATO	3191	3192	M16	23	17	19	14	54	29	23	7



WITH COOLANT BORE  
 and DOUBLE O-Ring

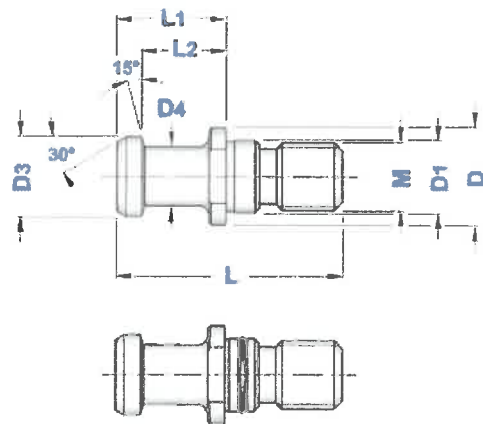


TIPO	Art.	M	D	D1	D3	D4	L	L1	L2	F
69872/ <b>BT 40</b> - FORATO con DOPIO OR	3403	M16	23	17	19	14	54	29	23	7





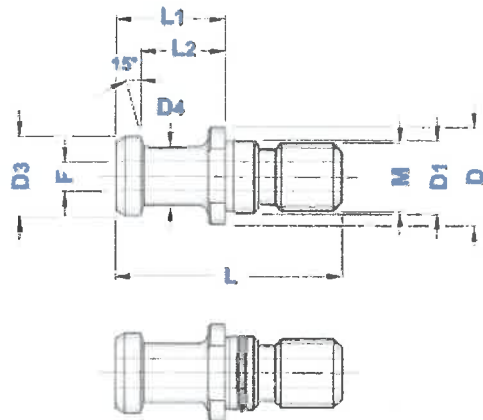
<b>ISO 7388/2-A</b>	<b>CODOLI ISO 7388/2A</b> ISO 7388/2A PULL STUD BOLTS
-------------------------	--



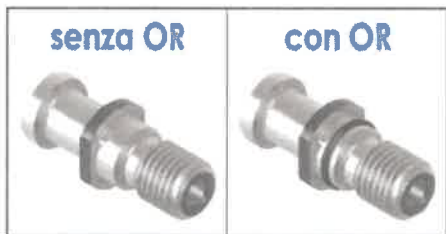
WITHOUT COOLANT BORE



TIPO	Art.	Art.	M	D	D1	D3	D4	L	L1	L2
7388/2A ISO30 - NON FORATO	3479	—	M12	16	13	12	8	44	24	19
7388/2A ISO40 - NON FORATO	4576	4582	M16	23	17	19	14	54	26	20
7388/2A ISO45 - NON FORATO	4577	—	M20	30	21	23	17	65	30	23
7388/2A ISO50 - NON FORATO	4578	4584	M24	36	25	28	21	74	34	25

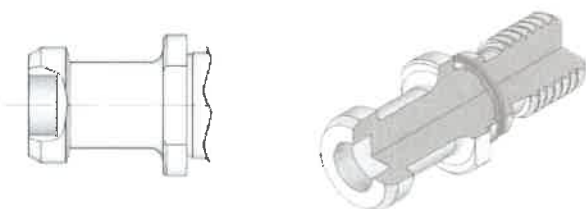


WITH COOLANT BORE



TIPO	Art.	Art.	M	D	D1	D3	D4	L	L1	L2	F
7388/2A ISO40 - FORATO	3480	3047	M16	23	17	19	14	54	26	20	7,0
7388/2A ISO45 - FORATO	3481	—	M20	30	21	23	17	65	30	23	9,5
7388/2A ISO50 - FORATO	3482	3049	M24	36	25	28	21	74	34	25	11,5

ID COUNTERBORE



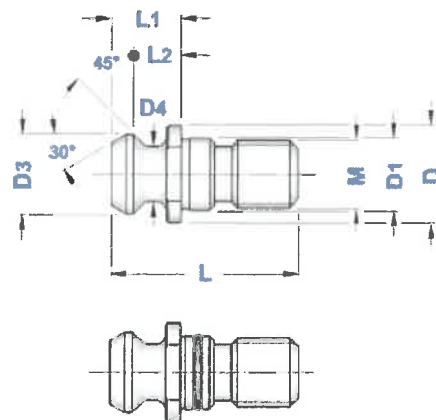
**Si esegue sede chip  
su specifica del cliente**  
*ID counterbore is carried out  
upon customer specification*





**ISO  
7388/2-B**

**CODOLI ISO 7388/2B**  
ISO 7388/2B PULL STUD BOLTS



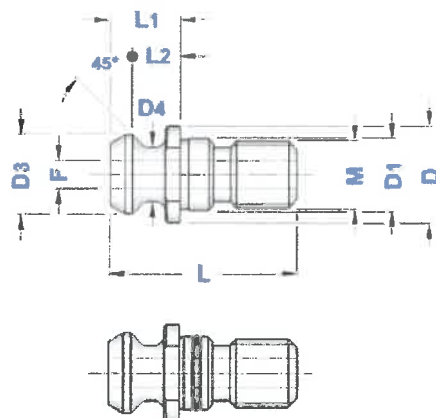
WITHOUT COOLANT BORE

senza OR

con OR



TIPO	Art.	Art.	M	D	D1	D3	D4	L	L1	L2
7388/2B ISO30 - NON FORATO	3483	—	M12	17	12,5	13,3	9,3	34	11,8	8,1
7388/2B ISO40 - NON FORATO	4579	4585	M16	22,5	17	18,9	12,9	44,5	16,4	11,1
7388/2B ISO45 - NON FORATO	4580	—	M20	30	21	24	16,3	56	20,9	14,8
7388/2B ISO50 - NON FORATO	4581	4587	M24	37	25	29,1	19,6	65,5	25,5	17,9



WITH COOLANT BORE

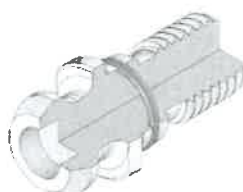
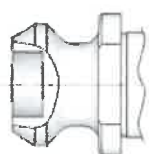
senza OR

con OR



TIPO	Art.	Art.	M	D	D1	D3	D4	L	L1	L2	F
7388/2B ISO40 - FORATO	3484	3050	M16	22,5	17	18,9	12,9	44,5	16,4	11,1	7,3
7388/2B ISO45 - FORATO	3485	—	M20	30	21	24	16,3	56	20,9	14,8	9,2
7388/2B ISO50 - FORATO	3486	3052	M24	37	25	29,1	19,6	65,5	25,5	17,9	11,5

ID COUNTERBORE

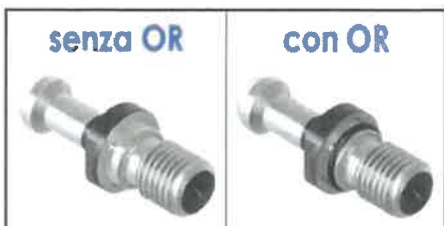
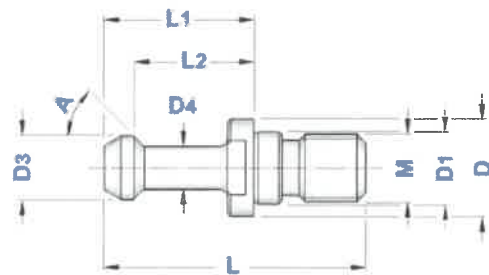


**Si esegue sede chip  
su specifica del cliente**

ID counterbore is carried out  
upon customer specification

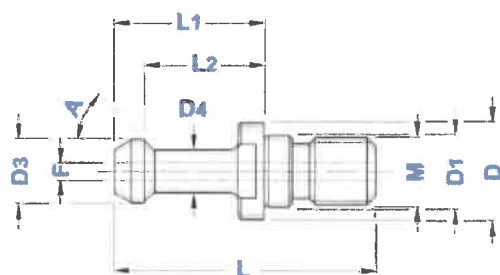


<b>BT MAS</b>	<b>CODOLI BT BT PULL STUD BOLTS</b>
-------------------	---



WITHOUT COOLANT BORE

TIPO	Art.	Art.	A	M	D	D1	D3	D4	L	L1	L2
BT 30 - 45° NON FORATO	3288	—	45°	M12	16,5	12,5	11	7	43	23	18
BT 30 - 60° NON FORATO	3287	—	60°	M12	16,5	12,5	11	7	43	23	18
BT 35 - 45° NON FORATO	3290	—	45°	M12	20	13	13	8,5	48	28	22,5
BT 40 - 45° NON FORATO	3292	3316	45°	M16	23	17	15	10	60	35	28
BT 40 - 60° NON FORATO	3293	3315	60°	M16	23	17	15	10	60	35	28
BT 40 - 90° NON FORATO	3294	3318	90°	M16	23	17	15	10	60	35	28
BT 45 - 45° NON FORATO	3297	—	45°	M20	31	21	19	14	70	40	31
BT 45 - 60° NON FORATO	3298	—	60°	M20	31	21	19	14	70	40	31
BT 50 - 45° NON FORATO	3300	3325	45°	M24	38	25	23	17	85	45	35
BT 50 - 60° NON FORATO	3301	3322	60°	M24	38	25	23	17	85	45	35
BT 50 - 90° NON FORATO	3302	3326	90°	M24	38	25	23	17	85	45	35



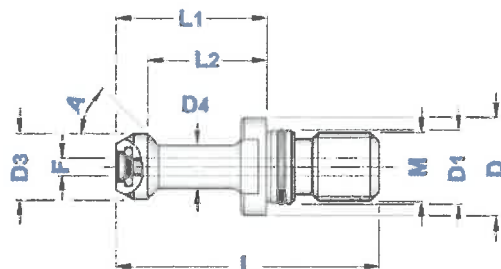
WITH COOLANT BORE

TIPO	Art.	Art.	A	M	D	D1	D3	D4	L	L1	L2	F
BT 30 - 45° FORATO	3225	—	45°	M12	16,5	12,5	11	7	43	23	18	2,5
BT 30 - 60° FORATO	3224	—	60°	M12	16,5	12,5	11	7	43	23	18	2,5
BT 40 - 45° FORATO	3328	3430	45°	M16	23	17	15	10	60	35	28	4
BT 40 - 60° FORATO	3327	3429	60°	M16	23	17	15	10	60	35	28	4
BT 40 - 90° FORATO	3330	3431	90°	M16	23	17	15	10	60	35	28	4
BT 50 - 45° FORATO	3332	3501	45°	M24	38	25	23	17	85	45	35	6
BT 50 - 60° FORATO	3331	3500	60°	M24	38	25	23	17	85	45	35	6
BT 50 - 90° FORATO	3333	3502	90°	M24	38	25	23	17	85	45	35	6



**BT  
MAS**

**CODOLI BT con DOPPIO OR**  
BT PULL STUD BOLTS with DOUBLE O-Ring

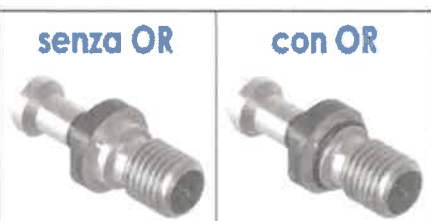


WITH COOLANT BORE  
and DOUBLE O-Ring

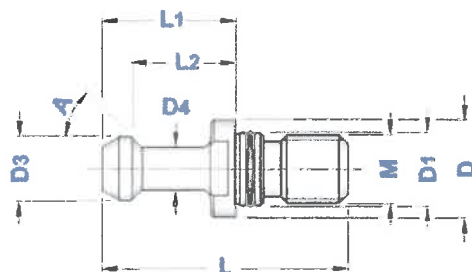
TIPO	Art.	A	M	D	D1	D3	D4	L	L1	L2	F
BT 40 - 45° FORATO con DOPPIO OR	3131	45°	M16	23	17	15	10	60	35	28	3
BT 40 - 60° FORATO con DOPPIO OR	3132	60°	M16	23	17	15	10	60	35	28	3
BT 50 - 45° FORATO con DOPPIO OR	3133	45°	M24	38	25	23	17	85	45	35	6
BT 50 - 60° FORATO con DOPPIO OR	3134	60°	M24	38	25	23	17	85	45	35	6
BT 50 - 90° FORATO con DOPPIO OR	3135	90°	M24	38	25	23	17	85	45	35	6

**BT** → **DIN  
69871**

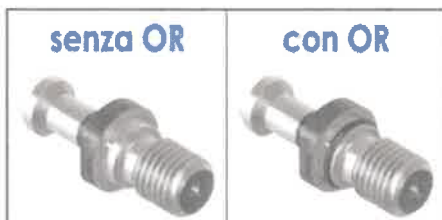
**CODOLI TIPO BT ADATTI per CONI DIN 69871**  
BT TYPE PULL STUD BOLTS suitable for DIN 69871 SHANKS



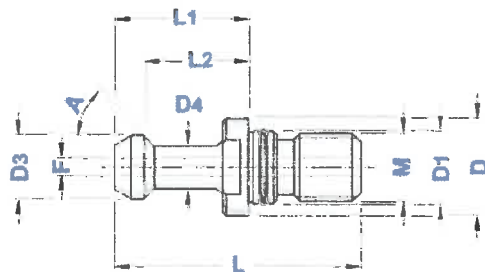
WITHOUT COOLANT BORE



TIPO	Art.	Art.	A	M	D	D1	D3	D4	L	L1	L2
SK 40 - 45° NON FORATO	3291	4632	45°	M16	23	17	15	10	57	32	25
SK 40 - 60° NON FORATO	3286	4631	60°	M16	23	17	15	10	57	32	25
SK 40 - 90° NON FORATO	3296	4633	90°	M16	23	17	15	10	57	32	25



WITH COOLANT BORE

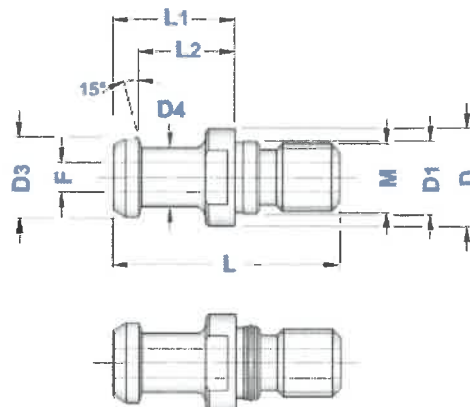


TIPO	Art.	Art.	A	M	D	D1	D3	D4	L	L1	L2	F
SK 40 - 45° FORATO	4635	4638	45°	M16	23	17	15	10	57	32	25	4
SK 40 - 60° FORATO	4634	4637	60°	M16	23	17	15	10	57	32	25	4
SK 40 - 90° FORATO	4636	4639	90°	M16	23	17	15	10	57	32	25	4

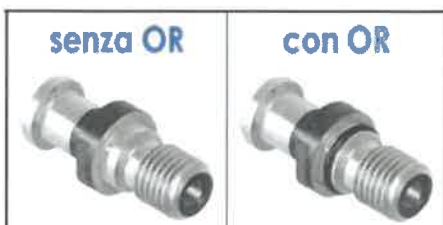


**JIS B 6339**

**CODOLI JIS B 6339**  
JIS B 6339 PULL STUD BOLTS

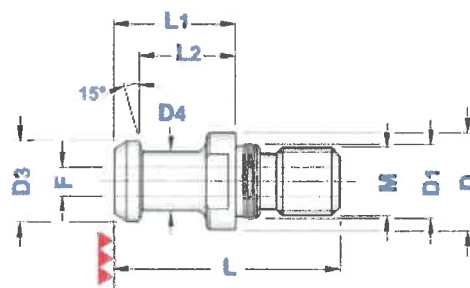


WITH COOLANT BORE



TIPO	Art.	Art.	M	D	D1	D3	D4	L	L1	L2	F
6339 ISO 30 - FORATO	3334	—	M12	16,5	12,5	12	8	43	23,4	18,4	4
6339 ISO 40 - FORATO	3084	3097	M16	23	17	19	14	54	29	23	4
6339 ISO 40 - FORATO	4588	3317	M16	23	17	19	14	54	29	23	7
6339 ISO 50 - FORATO	—	3335	M24	38	25	28	21	74	34	25	10

WITH COOLANT BORE  
and GRINDED HEAD

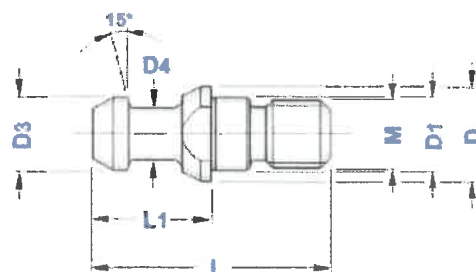


TIPO	Art.	M	D	D1	D3	D4	L	L1	L2	F
6339 ISO 40 - FORATO con RASAMENTO RETTIFICATO	4549	M16	23	17	19	14	54	29	23	4



**ISO 20**

**CODOLI per ISO 20**  
PULL STUD BOLTS for ISO 20 SHANK



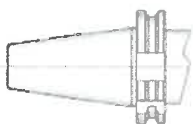
TIPO	Art.	M	D	D1	D3	D4	L	L1
ISO 20 - M 8 / L 28	3491	M 8	11	8,5	8,5	6	28	14



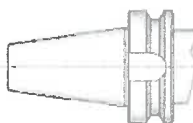


<b>OTT</b>	<b>CODOLI ADATTATORI OTT</b> OTT ADAPTER PULL STUD BOLTS
------------	---

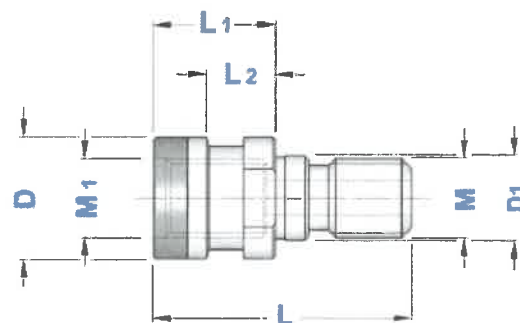
TIPO	Art.	M	M1	D	D1	L	L1	L2
OTT M16 - TC 40	<b>3487</b>	M16	M16	25,3	17	53	25	13,6
OTT M16 - BT 40	<b>3466</b>	M16	M16	25,3	17	56	28	16,6
OTT M24	<b>0087</b>	M24	M24	39,6	25	65	25	13



DIN 69871 → DIN 2080

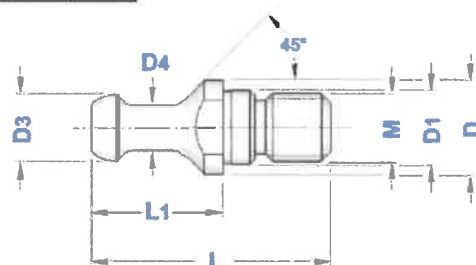


BT → DIN 2080



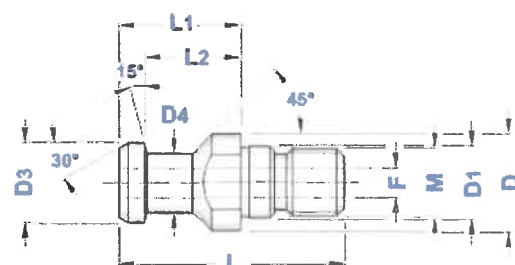
<b>BIESSE</b>	<b>CODOLI TIPO BIESSE</b> PULL STUD BOLTS BIESSE TYPE
---------------	--

TIPO	Art.	M	D	D1	D3	D4	L	L1
BIESSE ISO 30 - M12	<b>3492</b>	M12	17	13	12	8	44	24



<b>BRIDGEPORT</b>	<b>CODOLI TIPO BRIDGEPORT</b> PULL STUD BOLTS BRIDGEPORT TYPE
-------------------	--

TIPO	Art.	M	D	D1	D3	D4	L	L1	L2	F
BRIDGEPORT ISO 40 - M16	<b>3359</b>	M16	23	17	19	14	54	29	23	7

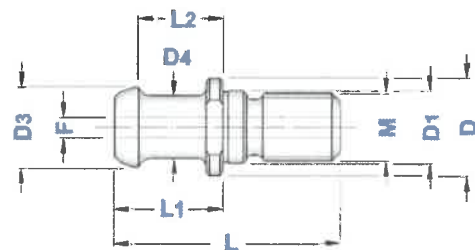






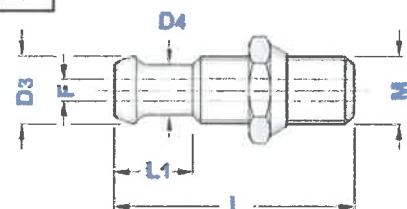
<b>C.B. FERRARI</b>	<b>CODOLI TIPO C.B. FERRARI</b> <i>PULL STUD BOLTS C.B. FERRARI TYPE</i>
---------------------	---

TIPO	Art.	M	D	D1	D3	D4	L	L1	L2	F
C.B. FERRARI ISO40 - M16	<b>4597</b>	M16	23	17	19	15	54	26	20,31	5



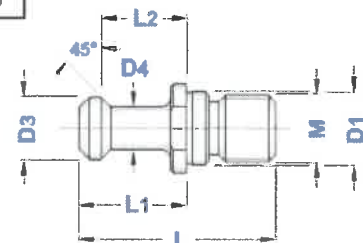
**C.B. FERRARI con DADO**  
*C.B. FERRARI WITH NUT*

TIPO	Art.	M	D3	D4	L	L1	F
C.B. FERRARI ISO40 - M16/DADO	<b>3493</b>	M16	16	12	57	18,5	5



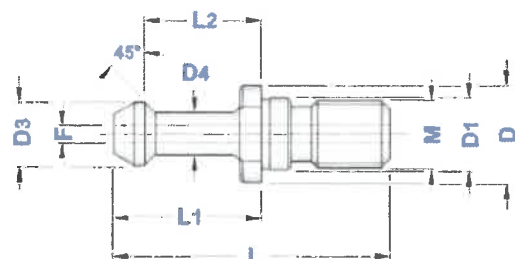
<b>CHIRON</b>	<b>CODOLI TIPO CHIRON</b> <i>PULL STUD BOLTS CHIRON TYPE</i>
---------------	---

TIPO	Art.	M	D1	D3	D4	L	L1	L2
CHIRON ISO30 - M12	<b>4593</b>	M12	13	10	6	36	20	16



<b>CINCINNATI</b>	<b>CODOLI TIPO CINCINNATI</b> <i>PULL STUD BOLTS CINCINNATI TYPE</i>
-------------------	---

TIPO	Art.	M	L	L1	L2	D	D1	D3	D4	F
CINCINNATI ISO40 - M16/L1=36,6	<b>4583</b>	M16	67,3	36,6	29	22,2	17	15	10,3	3,8
CINCINNATI ISO40 - M16/L1=39,4	<b>4586</b>	M16	67,3	39,4	31,75	22,2	17	15	10,3	3,8

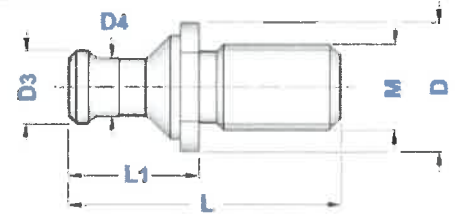




## CORREA

### CODOLI TIPO CORREA CORREA TYPE PULL STUD BOLTS CORREA TYPE

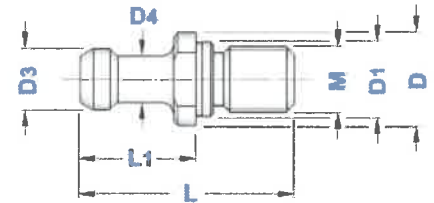
TIPO	Art.	M	D	D3	D4	L	L1
CORREA ISO 50 - M 24	4594	M 24	36	20	16	76	36



## CORTINI

### CODOLI TIPO MECCANICA CORTINI PULL STUD BOLTS MECCANICA CORTINI TYPE

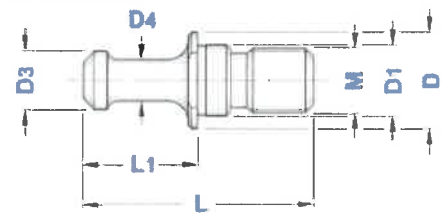
TIPO	Art.	M	D	D1	D3	D4	L	L1
CORTINI ISO 30 - M12	0064	M12	16	13	10	7	39	21



## FAMUP

### CODOLI TIPO FAMUP PULL STUD BOLTS FAMUP TYPE

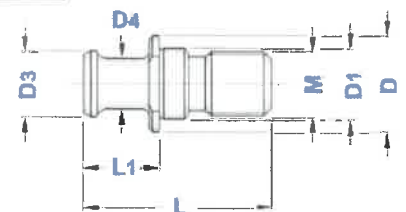
TIPO	Art.	M	D	D1	D3	D4	L	L1
FAMUP ISO 30 - M12	2756	M 12	16	13	9,8	5,8	40	20
FAMUP ISO 40 - M16/L=55	3527	M 16	23	17	13,8	9,8	55	27
FAMUP ISO 40 - M16/L=58	4590	M 16	23	17	13,8	9,8	58	30



## GLORIA

### CODOLI TIPO GLORIA PULL STUD BOLTS GLORIA TYPE

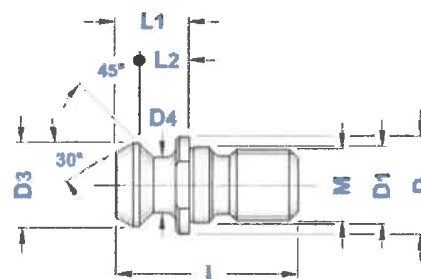
TIPO	Art.	M	D	D1	D3	D4	L	L1
GLORIA ISO 40 - M16	3471	M 16	23	17	16	12	45	18





**MAZAK**

**CODOLI TIPO MAZAK**  
PULL STUD BOLTS MAZAK TYPE

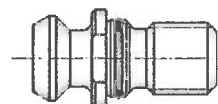


senza OR

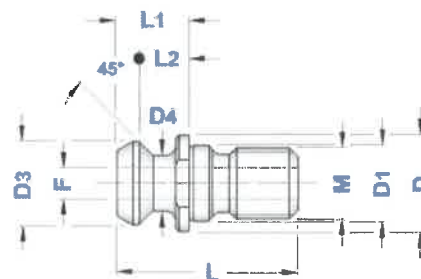
con OR



WITHOUT COOLANT BORE



TIPO	Art.	Art.	M	D	D1	D3	D4	L	L1	L2	
MAZAK SK 40 NON FORATO	4541	4542	M16	21,8	17	18,79	12,44	41,25	16,25	11,17	DIN69871/CAT
MAZAK BT 40 NON FORATO	4543	4544	M16	22	17	18,79	12,44	44,10	19,10	14,02	BT

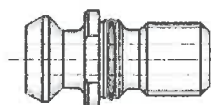


senza OR

con OR



WITH COOLANT BORE

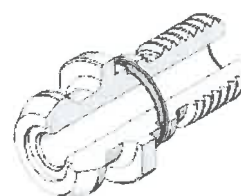
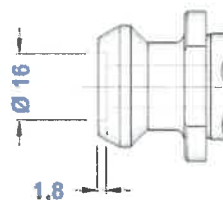


TIPO	Art.	Art.	M	D	D1	D3	D4	L	L1	L2	F	
MAZAK SK 40 FORATO	4589	4772	M16	21,8	17	18,79	12,44	41,25	16,25	11,17	7	DIN69871/CAT
MAZAK BT 40 FORATO	4592	4773	M16	22	17	18,79	12,44	44,10	19,10	14,02	7	BT
MAZAK SK 50 FORATO	4776	4777	M24	35,5	25	28,95	20,82	65,40	25,40	17,78	10	DIN69871/CAT
MAZAK BT 50 FORATO	4778	4779	M24	37	25	28,95	20,82	65,20	25,20	17,58	10	BT

WITH COOLANT BORE  
and COUNTERBORE

senza OR

con OR



TIPO	Art.	Art.	M	D	D1	D3	D4	L	L1	L2	F	
MAZAK SK 50 con LAMATURA	3269	4774	M24	35,5	25	28,95	20,82	65,40	25,40	17,78	10	DIN69871/CAT
MAZAK BT 50 con LAMATURA	3352	4775	M24	37	25	28,95	20,82	65,20	25,20	17,58	10	BT

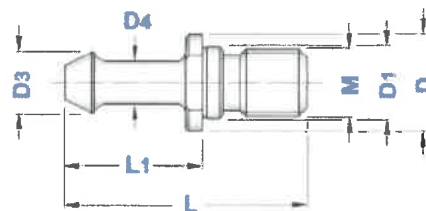




## OLIVETTI

### CODOLI TIPO OLIVETTI OCN PULL STUD BOLTS OLIVETTI OCN TYPE

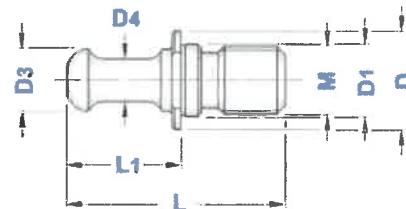
TIPO	Art.	M	D	D1	D3	D4	L	L1
OLIVETTI ISO 40 - M16	4591	M 16	23	17	14,3	10	58	33



## RAMBAUDI

### CODOLI TIPO RAMBAUDI PULL STUD BOLTS RAMBAUDI TYPE

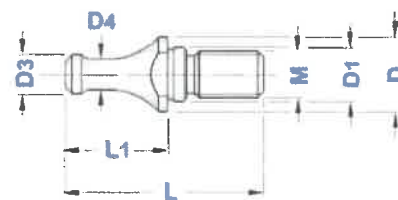
TIPO	Art.	M	D	D1	D3	D4	L	L1
RAMBAUDI ISO 40 - M 16	4595	M16	24	17	14,6	10	52	27
RAMBAUDI ISO 50 - M 24	4596	M24	35,8	25	20	16	79,5	39,5



## SCM MORBIDELLI

### CODOLI TIPO SCM / MORBIDELLI PULL STUD BOLTS SCM / MORBIDELLI TYPE

TIPO	Art.	M	D	D1	D3	D4	L	L1
SCM/MORBIDELLI ISO 30 - M10	3358	M10	15	11	8,5	6,5	42,5	21,9



## SECMU

### CODOLI TIPO SECMU PULL STUD BOLTS SECMU TYPE

TIPO	Art.	M	D	D1	D3	D4	L	L1	C
SECMU ISO 50 - M 24	3496	M24	40	25	17,5	9,8	64	29	36

