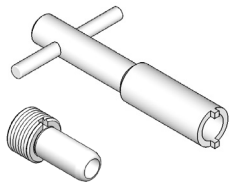


INDICE DELL' ATTACCO DIN 69893 - HSK "A+C"

INDEX OF DIN 69893 - HSK "A+C" SHANK

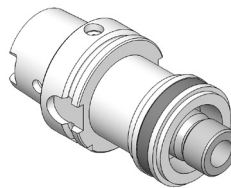
ADDUTTORI PER REFRIGERANTE COOLANT TUBES



Programma
completo
a pag.

142

RIDUZIONI A HSK A+C REDUCTIONS TO HSK A+C

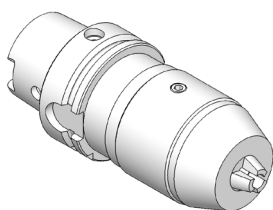


Programma
completo
a pag.

143

AUTOSERRANTI INTEGRALI

MONOLITHIC DRILL CHUCKS

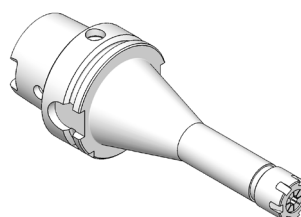


Programma
completo
a pag.

143

PORTAPINZA ER CON GHIERA MINI

ER-DIN 6499 COLLET CHUCKS
WITH MINI NUT

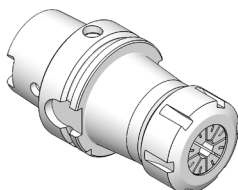


Programma
completo
a pag.

144

PORTAPINZA ER CON GHIERA STANDARD

ER-DIN 6499 COLLET CHUCKS
WITH STANDARD NUT

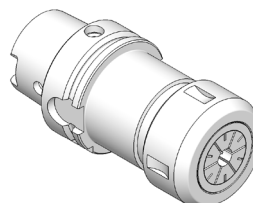


Programma
completo
a pag.

145

MANDRINI PER PINZE EOC DIN 6388

DIN 6388 COLLET CHUCKS

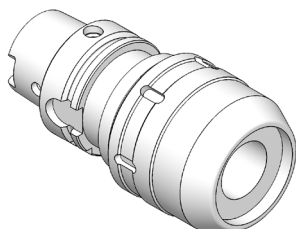


Programma
completo
a pag.

146

MANDRINI A FORTE SERRAGGIO

HIGH GRIP CHUCKS

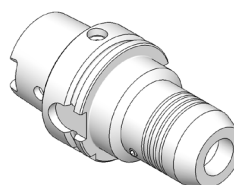


Programma
completo
a pag.

147

MANDRINI A SERRAGGIO IDRAULICO

HYDRAULIC CHUCKS

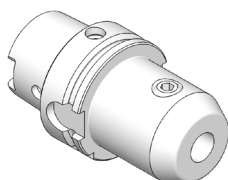


Programma
completo
a pag.

147

PORTAFRESE WELDON

END MILL HOLDERS
FOR DIN 1835-B SHANKS

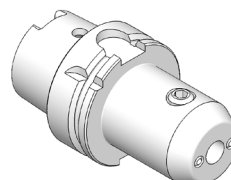


Programma
completo
da pag.

148

PORTAFRESE WELDON CON SFERE DI LUBRIFICAZIONE

END MILL HOLDERS FOR DIN 1835-B SHANKS
WITH FRONT COOLANT



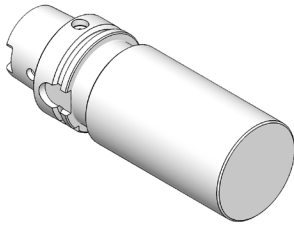
Programma
completo
a pag.

150

INDICE DELL' ATTACCO DIN 69893 - HSK "A+C"

INDEX OF DIN 69893 - HSK "A+C" SHANK

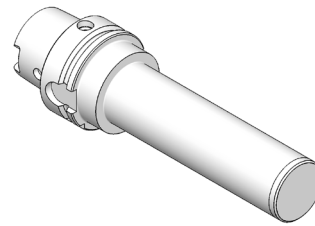
BARRE A STELO TENERO BLANK BARS



Programma
completo
a pag.

152

BARRE DI CONTROLLO TEST ARBORS

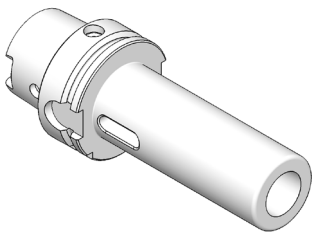


Programma
completo
a pag.

152

RIDUZIONI A CONO MORSE PER PUNTE

ADAPTERS TO MORSE TAPER
TWIST DRILLS

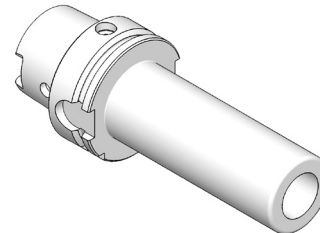


Programma
completo
a pag.

153

RIDUZIONI A CONO MORSE PER FRESE

ADAPTERS TO MORSE TAPER
MILLING CUTTERS

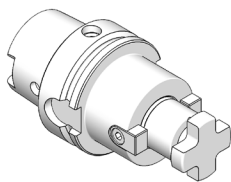


Programma
completo
a pag.

153

PORTAFRESE FISSI

DIN 6357
FACE MILL HOLDERS

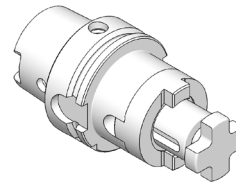


Programma
completo
a pag.

154

PORTAFRESE COMBINATI

DIN 6358 SHELL END
MILL HOLDERS

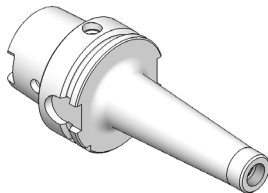


Programma
completo
a pag.

155

MANDRINI PER FRESE CON ATTACCO FILETTATO

CHUCKS FOR MILLING CUTTERS
WITH THREADED SHANK

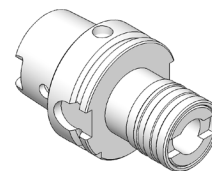


Programma
completo
a pag.

156

MASCHIATORI A CAMBIO RAPIDO

QUICK CHANGE TAP HOLDERS

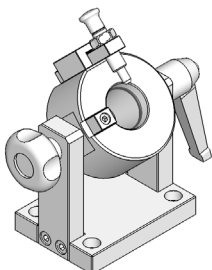


Programma
completo
a pag.

157

SUPPORTI DI MONTAGGIO

TIGHTENING FIXTURES

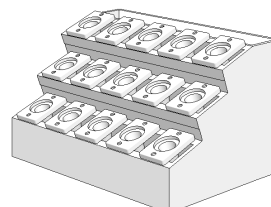


Programma
completo
a pag.

187

MAGAZZINI PORTACONI

TOOL STORES

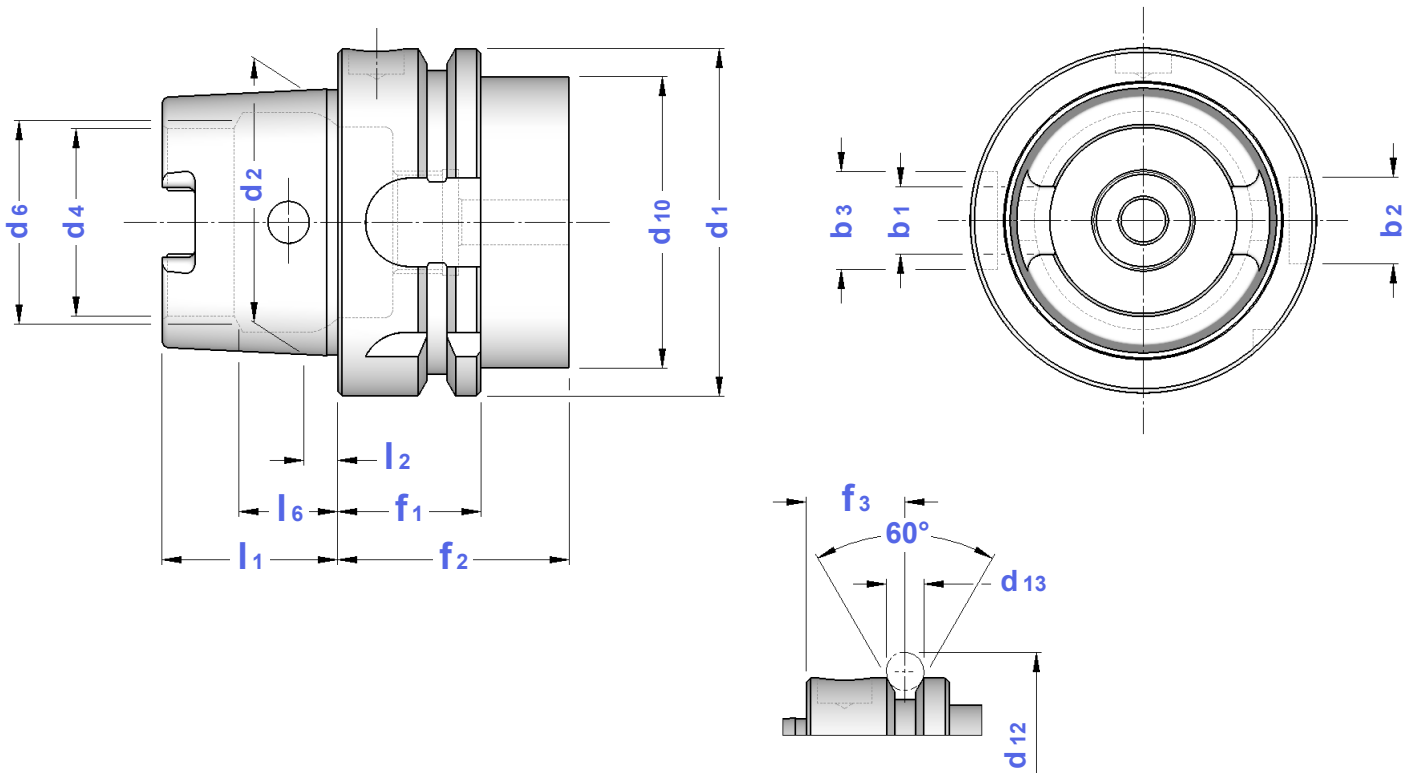


Programma
completo
a pag.

192

CARATTERISTICHE TECNICHE DIN 69893 - HSK A+C

DIN 69893 - HSK A+C STANDARD FEATURES



CONO	b1	b2	b3	d1	d2	d4	d6	d10	d12	d13	f1	f2	f3	l1	l2	l6	OR
HSK 32	7,05	7	9	32	24	17	19	26	37,00	4	20	35	16	16	3,2	8,92	6975
HSK 40	8,05	9	11	40	30	21	23	34	45,00	4	20	35	16	20	4,0	11,42	6976
HSK 50	10,54	12	14	50	38	26	29	42	59,30	7	26	42	18	25	5,0	14,13	6977
HSK 63	12,54	16	18	63	48	34	37	53	72,30	7	26	42	18	32	6,3	18,13	6978
HSK 100	20,02	20	22	100	75	53	58	85	109,75	7	29	45	20	50	10,0	28,56	6979

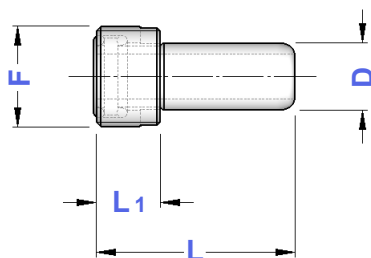
ADDUTTORI PER REFRIGERANTE COOLANT TUBES



OR
O-RING



CHIAVE
WRENCH

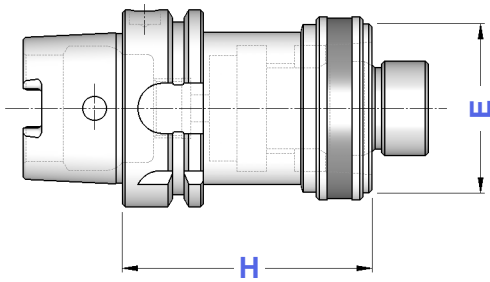


TIPO	Art.	F	D	L	L1	OR	CHIAVE
HSK 32 A+C	0413	M 10 x 1	6	26,0	5,5	5668	0470
HSK 40 A+C	0414	M 12 x 1	8	29,3	7,5	5672	0471
HSK 50 A+C	0415	M 16 x 1	10	33,0	9,5	5673	0472
HSK 63 A+C	0416	M 18 x 1	12	36,6	11,5	5674	0473
HSK 100 A+C	0418	M 24 x 1,5	16	44,0	15,5	5675	0474

HSK A + C

RIDUZIONI A HSK A+C REDUCTIONS TO HSK A+C

TIPO	Art.	H	E
HSK 50 A - HSK 32 A+C	6193	60	32
HSK 50 A - HSK 40 A+C	6194	70	40
HSK 63 A - HSK 32 A+C	6195	70	32
HSK 63 A - HSK 40 A+C	6196	70	40
HSK 63 A - HSK 50 A+C	6197	80	50
HSK100 A - HSK 50 A+C	6198	90	50
HSK100 A - HSK 63 A+C	6199	100	63



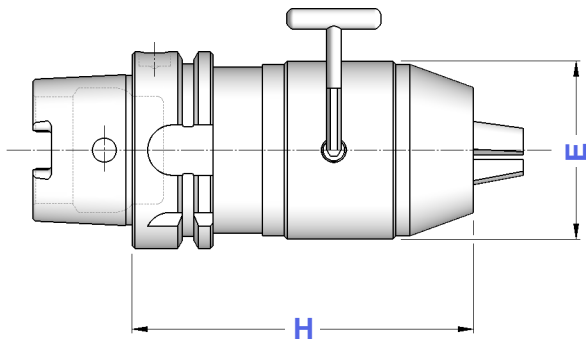
HSK A + C

MANDRINI AUTOSERRANTI INTEGRALI ROTAZIONE DESTRA E SINISTRA MONOLITHIC DRILL CHUCKS - RIGHT & LEFT SPIN



Balanced G 6,3
12.000 rpm

TIPO	Art.	CAPACITA'	E	H	
HSK 50 A - DCU 13	8830	1 ÷ 13	50	105	2372
HSK 63 A - DCU 13	8831	1 ÷ 13	50	130	2372
HSK 63 A - DCU 16	8832	3 ÷ 16	57	140	
HSK 100 A - DCU 13	8833	1 ÷ 13	50	108	2372
HSK 100 A - DCU 16	8834	3 ÷ 16	57	113	



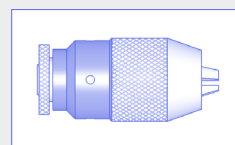
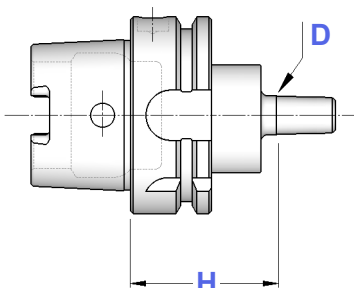
Precisione di rotazione: 0,05 mm
Runout accuracy: 0,05 mm

HSK A + C

ATTACCHI PER MANDRINI PORTAPUNTA DIN 238 SHANKS FOR DRILL CHUCKS DIN 238 TYPE

Balanced G 6,3
8.000 rpm

TIPO	Art.	D	H
HSK 63 A - B12	6014	12,065	45
HSK 63 A - B16	6015	15,733	45
HSK 63 A - B18	6016	17,780	45



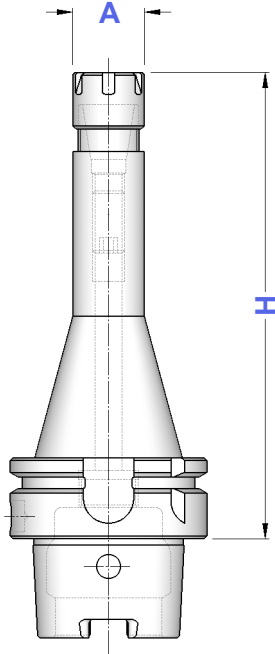
I Mandrini Autoserranti
si trovano a pagina 69
del Catalogo Generale

Keyless Drill Chucks
you can find on
General Catalogue page 69

HSK A + C

PORTAPINZA ER - GHIERA MINI ER - DIN 6499 COLLET CHUCKS WITH MINI NUT

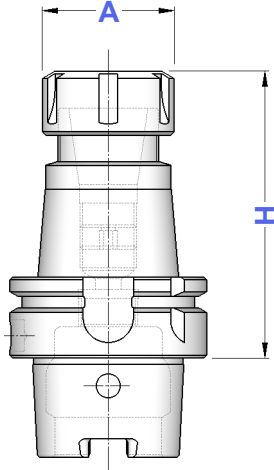
Balanced G 6,3
15.000 rpm



TIPO	Art.	A	CAPACITA'			
HSK 32 A - ER 16 GM/H 65	6000	22	1 ÷ 10	1229	5719	0364
HSK 32 A - ER 16 GM/H 90	6001					
HSK 32 A - ER 25 GM/H 70	6004	35	1 ÷ 16	1231	5721	0996
HSK 40 A - ER 11 GM/H 70	6027	16	1 ÷ 7	0432	5718	5573
HSK 40 A - ER 11 GM/H 100	6028					
HSK 40 A - ER 11 GM/H 160	6029					
HSK 40 A - ER 16 GM/H 70	6006	22	1 ÷ 10	1229	5719	0364
HSK 40 A - ER 16 GM/H 120	6007					
HSK 40 A - ER 25 GM/H 120	6011	35	1 ÷ 16	1231	5721	0996
HSK 50 A - ER 11 GM/H 100	6010	16	1 ÷ 7	0432	5718	5573
HSK 50 A - ER 16 GM/H 80	6012	22	1 ÷ 10	1229	5719	0364
HSK 50 A - ER 16 GM/H 100	6002					
HSK 50 A - ER 16 GM/H 150	6013					
HSK 50 A - ER 25 GM/H 150	6017	35	1 ÷ 16	1231	5721	0996
HSK 63 A - ER 11 GM/H 70	6003	16	1 ÷ 7	0432	5718	5573
HSK 63 A - ER 11 GM/H 100	6073					
HSK 63 A - ER 11 GM/H 130	6005					
HSK 63 A - ER 11 GM/H 160	6074					
HSK 63 A - ER 16 GM/H 70	6008	22	1 ÷ 10	1229	5719	0364
HSK 63 A - ER 16 GM/H 100	6018					
HSK 63 A - ER 16 GM/H 130	6009					
HSK 63 A - ER 16 GM/H 160	6019					
HSK 63 A - ER 16 GM/H 200	6109					
HSK 63 A - ER 20 GM/H 70	6119	28	1 ÷ 13	1230	5720	0787
HSK 63 A - ER 20 GM/H 100	6020					
HSK 63 A - ER 20 GM/H 130	6301					
HSK 63 A - ER 20 GM/H 160	6021					
HSK 63 A - ER 20 GM/H 200	6303					
HSK 63 A - ER 25 GM/H 70	6121	35	1 ÷ 16	1231	5721	0996
HSK 63 A - ER 25 GM/H 100	6022					
HSK 63 A - ER 25 GM/H 130	6123					
HSK 63 A - ER 25 GM/H 160	6023					
HSK 63 A - ER 25 GM/H 200	6129					
HSK100 A - ER 16 GM/H 100	6024	22	1 ÷ 10	1229	5719	0364
HSK100 A - ER 16 GM/H 160	6025					
HSK100 A - ER 16 GM/H 200	6305					
HSK100 A - ER 20 GM/H 100	6307	28	1 ÷ 13	1230	5720	0787
HSK100 A - ER 20 GM/H 160	6308					
HSK100 A - ER 20 GM/H 200	6310					
HSK100 A - ER 25 GM/H 100	6311	35	1 ÷ 16	1231	5721	0996
HSK100 A - ER 25 GM/H 160	6026					
HSK100 A - ER 25 GM/H 200	6313					

	Pinze ER da pag. 8 ER Collets from page 8		Ghiere ER - da pag. 20 ER Nuts - from page 20
	Grani di presettaggio da pag. 197 Presetting screws from page 197		Chiavi ER - pag. 25 ER Wrenches - page 25

Balanced G 6,3
15.000 rpm

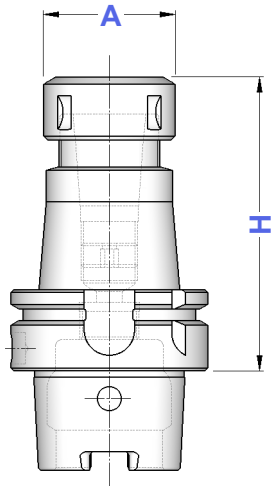





TIPO	Art.	A	CAPACITA'			
HSK 40 A - ER 25/H 65	6030	42	1 ÷ 16	4995	3669	0996
HSK 40 A - ER 25/H 80	6031					
HSK 40 A - ER 25/H 160	6075					
HSK 40 A - ER 32/H 65	6032	50	2 ÷ 20	4996	3670	0988
HSK 40 A - ER 32/H 100	6033					
HSK 40 A - ER 32/H 160	6034					
HSK 50 A - ER 16/H 70	6934	32	1 ÷ 10	4993	3698	0364
HSK 50 A - ER 16/H 100	6035					
HSK 50 A - ER 16/H 160	6935					
HSK 50 A - ER 20/H 70	6036	35	1 ÷ 13	4994	3699	0787
HSK 50 A - ER 20/H 100	6037					
HSK 50 A - ER 20/H 160	6936					
HSK 50 A - ER 25/H 70	6038	42	1 ÷ 16	4995	3669	0996
HSK 50 A - ER 25/H 100	6039					
HSK 50 A - ER 25/H 160	6042					
HSK 50 A - ER 32/H 70	6040	50	2 ÷ 20	4996	3670	0988
HSK 50 A - ER 32/H 100	6041					
HSK 50 A - ER 32/H 160	6043					
HSK 50 A - ER 40/H 75	6247	63	3 ÷ 30	4997	3671	0821
HSK 50 A - ER 40/H 100	6248					
HSK 50 A - ER 40/H 160	6249					
HSK 63 A - ER 16/H 70	6044	32	1 ÷ 10	4993	3698	0364
HSK 63 A - ER 16/H 100	6045					
HSK 63 A - ER 16/H 130	6046					
HSK 63 A - ER 16/H 160	6047	35	1 ÷ 13	4994	3699	0787
HSK 63 A - ER 16/H 200	6747					
HSK 63 A - ER 20/H 70	6048					
HSK 63 A - ER 20/H 100	6049	42	1 ÷ 16	4995	3669	0996
HSK 63 A - ER 20/H 130	6050					
HSK 63 A - ER 20/H 160	6051					
HSK 63 A - ER 20/H 200	6751	50	2 ÷ 20	4996	3670	0988
HSK 63 A - ER 25/H 70	6052					
HSK 63 A - ER 25/H 100	6053					
HSK 63 A - ER 25/H 130	6054	63	3 ÷ 30	4997	3671	0821
HSK 63 A - ER 25/H 160	6055					
HSK 63 A - ER 25/H 200	6755					
HSK 63 A - ER 32/H 75	6056	78	6 ÷ 34	4998	3668	4055
HSK 63 A - ER 32/H 100	6057					
HSK 63 A - ER 32/H 130	6058					
HSK 63 A - ER 32/H 160	6059	32	1 ÷ 10	4993	3698	0364
HSK 63 A - ER 32/H 200	6785					
HSK 63 A - ER 40/H 80	6060					
HSK 63 A - ER 40/H 120	6061	35	1 ÷ 13	4994	3699	0787
HSK 63 A - ER 40/H 160	6062					
HSK 63 A - ER 40/H 200	6790					
HSK 63 A - ER 50/H 105	6064	42	1 ÷ 16	4995	3669	0996
HSK 100 A - ER 16/H 100	6464					
HSK 100 A - ER 16/H 160	6465					
HSK 100 A - ER 16/H 200	6466	50	2 ÷ 20	4996	3670	0988
HSK 100 A - ER 20/H 100	6467					
HSK 100 A - ER 20/H 160	6468					
HSK 100 A - ER 20/H 200	6469	63	3 ÷ 30	4997	3671	0821
HSK 100 A - ER 25/H 100	6063					
HSK 100 A - ER 25/H 160	6065					
HSK 100 A - ER 25/H 200	6066	78	6 ÷ 34	4998	3668	4055
HSK 100 A - ER 32/H 100	6067					
HSK 100 A - ER 32/H 160	6069					
HSK 100 A - ER 32/H 200	6070	32	1 ÷ 10	4993	3698	0364
HSK 100 A - ER 40/H 120	6071					
HSK 100 A - ER 40/H 160	6072					
HSK 100 A - ER 40/H 200	6076	35	1 ÷ 13	4994	3699	0787
HSK 100 A - ER 50/H 130	6068					

HSK A + C

MANDRINI PER PINZE EOC DIN 6388 DIN 6388 COLLET CHUCKS

Balanced G 6,3
15.000 rpm



TIPO	Art.	A	CAPACITA'			
HSK 50 A - EOC 16 / H 100	6090	43	2 ÷ 16	4067	2883	0768
HSK 50 A - EOC 25 / H 100	6091	60	2 ÷ 25	4068	2909	0769
HSK 63 A - EOC 16 / H 100	6092	43	2 ÷ 16	4067	2883	0768
HSK 63 A - EOC 25 / H 100	6093	60	2 ÷ 25	4068	2909	0769
HSK 63 A - EOC 32 / H 120	6094	72	3 ÷ 32	4069	2910	0770
HSK 100 A - EOC 16 / H 110	6095	43	2 ÷ 16	4067	2883	0768
HSK 100 A - EOC 25 / H 120	6096	60	2 ÷ 25	4068	2909	0769
HSK 100 A - EOC 32 / H 130	6097	72	3 ÷ 32	4069	2910	0770

Dove trovare questi Articoli

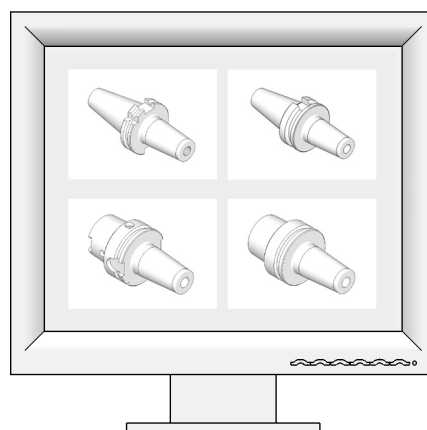
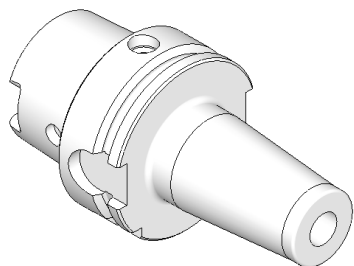
Where to find those Items

	Pinze EOC - DIN 6388 - pag. 28 EOC - DIN 6388 Collets - page 28
	Ghiere EOC - DIN 6388 - pag. 30 EOC - DIN 6388 Nuts - page 30
	Chiavi per ghiere EOC - pag. 30 EOC Wrenches - page 30

HSK A + C

MANDRINI CON CALETTAMENTO A CALDO SHRINK FIT CHUCKS

Balanced G 6,3
15.000 rpm

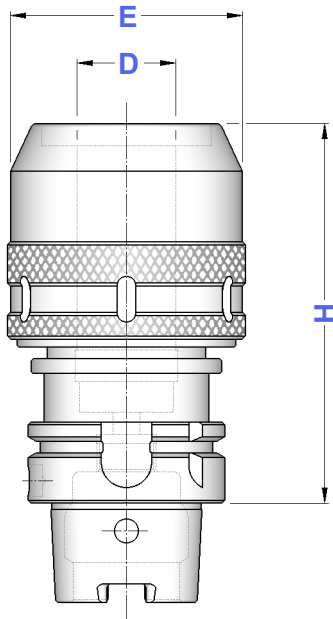


Brochure in preparazione
Brochure under preparation

HSK A + C

MANDRINI A FORTE SERRAGGIO HIGH GRIP CHUCKS

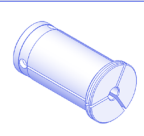
Balanced G 6,3
12.000 rpm



TIPO	Art.	H	D	E		
HSK 40 A - PC 20	6240	100	20	54	2900	0809
HSK 50 A - PC 20	6241	105	20	54	2900	0809
HSK 63 A - PC 20	6243	105	20	54	2900	0809
HSK 63 A - PC 32	6244	120	32	72	2910	0810
HSK 100 A - PC 20	6245	110	20	54	2900	0809
HSK 100 A - PC 32	6246	120	32	72	2910	0810

**Pinze cilindriche di riduzione
per Mandrini a Forte Serraggio
Pag. 31 del Catalogo Generale**

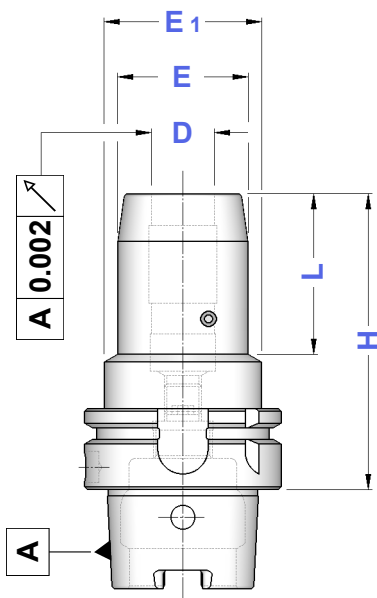
*Reduction cylindrical collets
for High Grip Chucks on
General Catalogue page 31*



HSK A + C

MANDRINI A SERRAGGIO IDRAULICO HYDRAULIC CHUCKS

Balanced G 2,5
20.000 rpm



TIPO	Art.	D	H	E	E1	L	
HSK 50 A - HYDRO 20	6411	20	90	42	60	29	0521
HSK 63 A - HYDRO 6	6412	6	70	26	50	24	—
HSK 63 A - HYDRO 8	6413	8	70	28	50	24	—
HSK 63 A - HYDRO 10	6414	10	80	30	50	32	—
HSK 63 A - HYDRO 12	6415	12	85	32	50	40	0520
HSK 63 A - HYDRO 16	6417	16	90	38	50	46	—
HSK 63 A - HYDRO 20	6419	20	90	42	50	48	0521
HSK 63 A - HYDRO 25	6420	25	120	57	53	63	—
HSK 63 A - HYDRO 32	6421	32	125	63	59	61	0522

Applicazioni: consente il bloccaggio ad alta precisione di utensili a gambo cilindrico DIN 1835 Forma A e B, con tolleranza di gambo h 6 e rugosità Ra < 0,3 micron

Attenzione: non azionare il sistema idraulico se l'utensile non è inserito nel mandrino

Applications: allows high precision locking of DIN 1835 shank tools Form A and B, with shank tolerance h 6 and surface roughness Ra < 0,3 micron.

Warning: do not start Hydraulic System without any tool fit inside



Balanced G 6,3
15.000 rpm

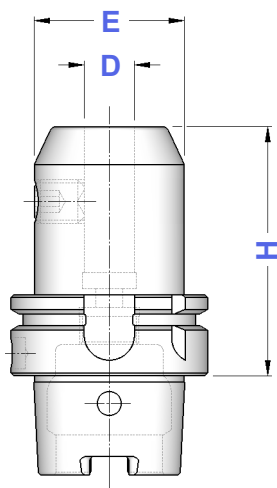


Figura 1

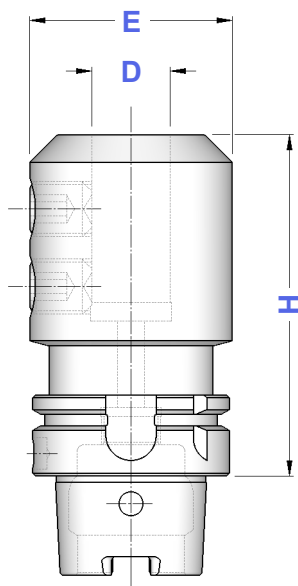


Figura 2

TIPO	Art.	D	H	E	Fig.		
HSK 32 A - WE 6/H 60	6100	6	60	25	1	4970	
HSK 32 A - WE 8/H 60	6101	8	60	28	1	4971	
HSK 32 A - WE 10/H 65	6102	10	65	35	1	4972	
HSK 32 A - WE 12/H 75	6103	12	75	42	1	4973	
HSK 32 A - WE 14/H 75	6104	14	75	44	1	4973	
HSK 32 A - WE 16/H 75	6105	16	75	48	1	4974	
HSK 40 A - WE 6/H 60	6110	6	60	25	1	4970	
HSK 40 A - WE 6/H 100	6111		100	18		0020	
HSK 40 A - WE 6/H 160	6125		160				
HSK 40 A - WE 8/H 60	6112	8	60	28	1	4971	
HSK 40 A - WE 8/H 100	6113		100	22		0021	
HSK 40 A - WE 8/H 160	6126		160				
HSK 40 A - WE 10/H 65	6114	10	65	35	1	4972	
HSK 40 A - WE 10/H 100	6127		100	30		0060	
HSK 40 A - WE 10/H 160	6115		160				
HSK 40 A - WE 12/H 70	6116	12	70	42	1	4973	
HSK 40 A - WE 12/H 100	6128		100	34		0260	
HSK 40 A - WE 12/H 160	6117		160				
HSK 40 A - WE 14/H 70	6118	14	70	44	1	4973	
HSK 40 A - WE 16/H 80	6120	16	80	48	1	4974	
HSK 40 A - WE 18/H 80	6122	18	80	50	1	4974	
HSK 40 A - WE 20/H 80	6124	20	80	52	1	4975	
HSK 50 A - WE 6/H 65	6130	6	65	25	1	4970	
HSK 50 A - WE 6/H 100	6131		100	18		0020	
HSK 50 A - WE 6/H 160	6937		160				
HSK 50 A - WE 8/H 65	6132	8	65	28	1	4971	
HSK 50 A - WE 8/H 100	6133		100	22		0021	
HSK 50 A - WE 8/H 160	6938		160				
HSK 50 A - WE 10/H 65	6134	10	65	35	1	4972	
HSK 50 A - WE 10/H 100	6939		100	30		0060	
HSK 50 A - WE 10/H 160	6135		160				
HSK 50 A - WE 12/H 80	6136	12	80	42	1	4973	
HSK 50 A - WE 12/H 100	6956		100	34		0260	
HSK 50 A - WE 12/H 160	6137		160				
HSK 50 A - WE 14/H 80	6138	14	80	44	1	4973	
HSK 50 A - WE 14/H 100	6139		100	36		0260	
HSK 50 A - WE 14/H 160	6957		160				
HSK 50 A - WE 16/H 80	6140	16	80	48	1	4974	
HSK 50 A - WE 16/H 100	6958		100	42		0261	
HSK 50 A - WE 16/H 160	6141		160				
HSK 50 A - WE 18/H 80	6142	18	80	50	1	4974	
HSK 50 A - WE 18/H 100	6143		100				
HSK 50 A - WE 18/H 160	6959		160				
HSK 50 A - WE 20/H 80	6144	20	80	52	1	4975	
HSK 50 A - WE 20/H 100	6145		100				
HSK 50 A - WE 20/H 160	6148		160				
HSK 50 A - WE 25/H 105	6146	25	105	65	2	4976	
HSK 50 A - WE 25/H 160	6149		160				
HSK 50 A - WE 32/H 120	6147	32	120	72	2	4977	

segue ➔

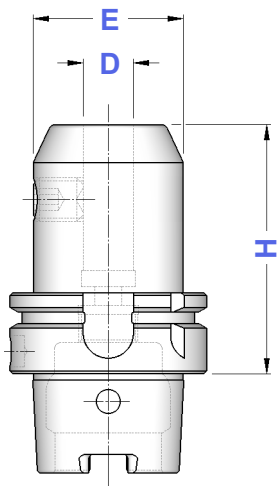


Figura 1

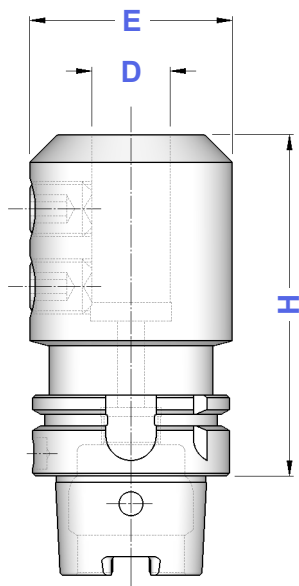


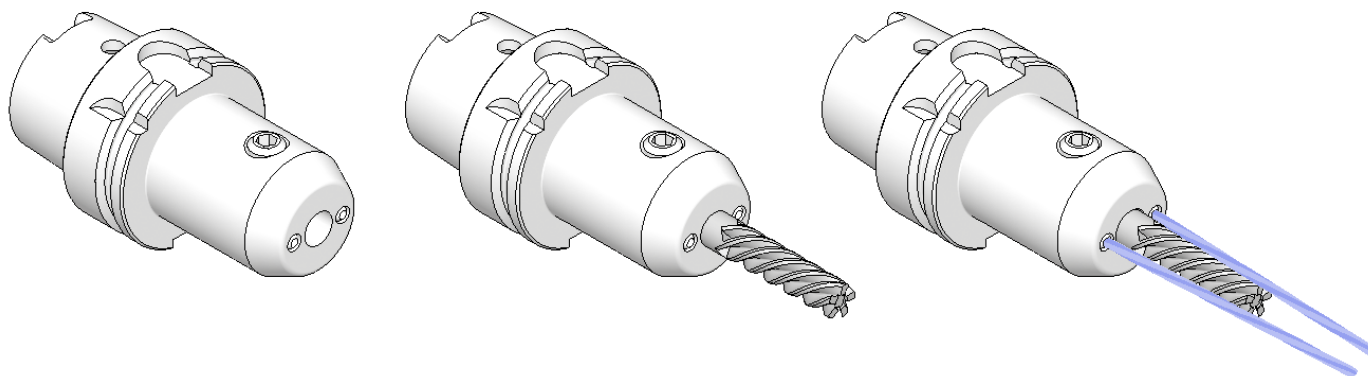
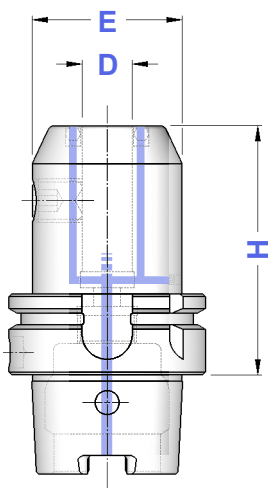
Figura 2

TIPO	Art.	D	H	E	Fig.			
HSK 63 A - WE 6/H 65	6150	6	65	25	1	4970		
HSK 63 A - WE 6/H 100	6966			18		0020		
HSK 63 A - WE 6/H 160	6151			160				
HSK 63 A - WE 8/H 65	6152	8	65	28	1	4971		
HSK 63 A - WE 8/H 100	6967			22		0021		
HSK 63 A - WE 8/H 160	6153			160				
HSK 63 A - WE 10/H 65	6154	10	65	35	1	4972		
HSK 63 A - WE 10/H 100	6968			30		0060		
HSK 63 A - WE 10/H 160	6155			160				
HSK 63 A - WE 12/H 80	6156	12	80	42	1	4973		
HSK 63 A - WE 12/H 100	6969			34		0260		
HSK 63 A - WE 12/H 160	6157			160				
HSK 63 A - WE 14/H 80	6158	14	80	44	1	4973		
HSK 63 A - WE 14/H 100	6159			36		0260		
HSK 63 A - WE 14/H 160	6970			160				
HSK 63 A - WE 16/H 80	6160	16	80	48	1	4974		
HSK 63 A - WE 16/H 100	6971			42		0261		
HSK 63 A - WE 16/H 160	6161			160				
HSK 63 A - WE 18/H 80	6162	18	80	50	1	4974		
HSK 63 A - WE 18/H 100	6163			44		0261		
HSK 63 A - WE 18/H 160	6972			160				
HSK 63 A - WE 20/H 80	6164	20	80	52	1	4975		
HSK 63 A - WE 20/H 100	6973			45		0070		
HSK 63 A - WE 20/H 160	6165			160				
HSK 63 A - WE 25/H 110	6166	25	110	65	2	4976		
HSK 63 A - WE 25/H 160	6167						160	
HSK 63 A - WE 32/H 110	6168	32	110	72	2	4977		
HSK 63 A - WE 32/H 160	6169						160	
HSK 63 A - WE 40/H 120	6974	40	120	80	2	4977		
HSK 63 A - WE 40/H 160	6980						160	
HSK 100 A - WE 6/H 80	6170	6	80	25	1	4970		
HSK 100 A - WE 6/H 160	6171						160	
HSK 100 A - WE 8/H 80	6172	8	80	28	1	4971		
HSK 100 A - WE 8/H 160	6173						160	
HSK 100 A - WE 10/H 80	6174	10	80	35	1	4972		
HSK 100 A - WE 10/H 160	6175						160	
HSK 100 A - WE 12/H 80	6176	12	80	42	1	4973		
HSK 100 A - WE 12/H 160	6177						160	
HSK 100 A - WE 14/H 80	6178	14	80	44	1	4973		
HSK 100 A - WE 14/H 160	6179						160	
HSK 100 A - WE 16/H 100	6180	16	100	48	1	4974		
HSK 100 A - WE 16/H 160	6181						160	
HSK 100 A - WE 18/H 100	6182	18	100	50	1	4974		
HSK 100 A - WE 18/H 160	6183						160	
HSK 100 A - WE 20/H 100	6184	20	100	52	1	4975		
HSK 100 A - WE 20/H 160	6185						160	
HSK 100 A - WE 20/H 200	6239						200	
HSK 100 A - WE 25/H 100	6186	25	100	65	2	4976		
HSK 100 A - WE 25/H 160	6187						160	
HSK 100 A - WE 25/H 200	6242						200	
HSK 100 A - WE 32/H 100	6188	32	100	72	2	4977		
HSK 100 A - WE 32/H 160	6189						160	
HSK 100 A - WE 32/H 200	6265						200	
HSK 100 A - WE 40/H 105	6190	40	105	80	2	4977		
HSK 100 A - WE 40/H 160	6192						160	
HSK 100 A - WE 40/H 200	6266						200	
HSK 100 A - WE 50/H 130	6191	50	130	95	2	4978		
HSK 100 A - WE 50/H 160	6285						160	



Balanced G 6,3
15.000 rpm

TIPO	Art.	D	H	E	
HSK 63A - WEC 6 / H 65	6912	6	65	25	4970
HSK 63A - WEC 8 / H 65	6913	8	65	28	4971
HSK 63A - WEC 10 / H 65	6914	10	65	35	4972
HSK 63A - WEC 12 / H 80	6915	12	80	42	4973
HSK 63A - WEC 14 / H 80	6916	14	80	44	4973
HSK 63A - WEC 16 / H 80	6917	16	80	48	4974
HSK 63A - WEC 18 / H 80	6918	18	80	50	4974
HSK 63A - WEC 20 / H 80	6919	20	80	52	4975
HSK 63A - WEC 25 / H 110	6920	25	110	65	4976
HSK 63A - WEC 32 / H 110	6921	32	110	72	4977



Dove trovare questi Articoli

Where to find those Items



Ugelli a sfera - pag. 263

Sphere coolant nozzles - page 263



Prolunghe per ugelli - pag. 263

Extensions for coolant nozzles - page 263



Balanced G 6,3
15.000 rpm

TIPO	Art.	D	H	E	Fig.	G1	G2
HSK 63 A - WN 6 / H 80	6218	6	80	25	1	0233	4970
HSK 63 A - WN 8 / H 80	6219	8	80	28	1	0235	4971
HSK 63 A - WN10 / H 80	6220	10	80	35	1	0238	4972
HSK 63 A - WN12 / H 90	6221	12	90	42	1	0240	4973
HSK 63 A - WN14 / H 90	6222	14	90	44	1	0240	4973
HSK 63 A - WN16 / H 100	6223	16	100	48	1	0245	4974
HSK 63 A - WN18 / H 100	6224	18	100	50	1	0245	4974
HSK 63 A - WN20 / H 100	6225	20	100	52	1	0245	4975
HSK 63 A - WN25 / H 110	6226	25	110	65	2	0247	4976
HSK 63 A - WN32 / H 115	6227	32	115	72	2	0247	4977
HSK 100 A - WN 6 / H 90	6228	6	90	25	1	0233	4970
HSK 100 A - WN 8 / H 90	6229	8	90	28	1	0235	4971
HSK 100 A - WN10 / H 90	6230	10	90	35	1	0238	4972
HSK 100 A - WN12 / H 100	6231	12	100	42	1	0240	4973
HSK 100 A - WN14 / H 100	6232	14	100	44	1	0240	4973
HSK 100 A - WN16 / H 100	6233	16	100	48	1	0245	4974
HSK 100 A - WN18 / H 100	6234	18	100	50	1	0245	4974
HSK 100 A - WN20 / H 110	6235	20	110	52	1	0245	4975
HSK 100 A - WN25 / H 120	6236	25	120	65	2	0247	4976
HSK 100 A - WN32 / H 120	6237	32	120	72	2	0247	4977
HSK 100 A - WN 40 / H 120	6238	40	120	80	2	0247	4977

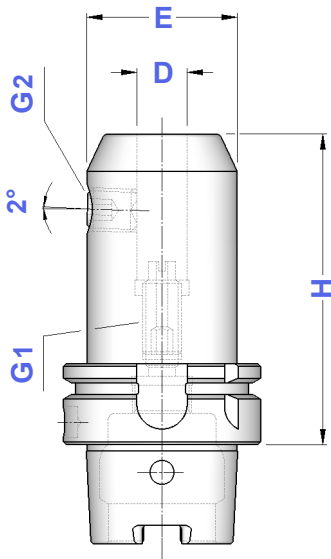


Figura 1

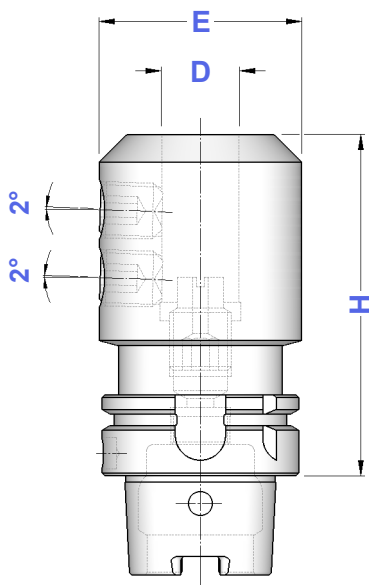
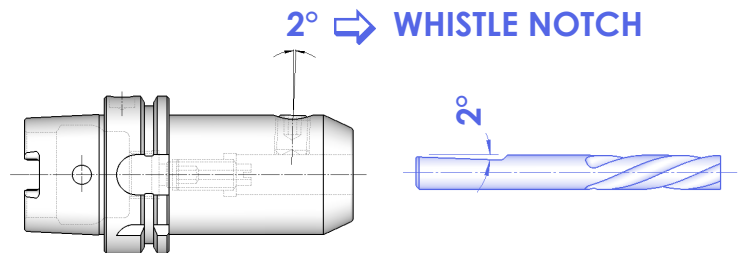


Figura 2



**Dove trovare questi Articoli
nel Catalogo Generale**

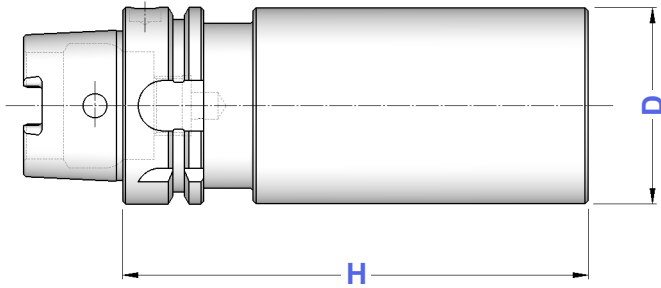
*Where to find those Items
on General Catalogue*



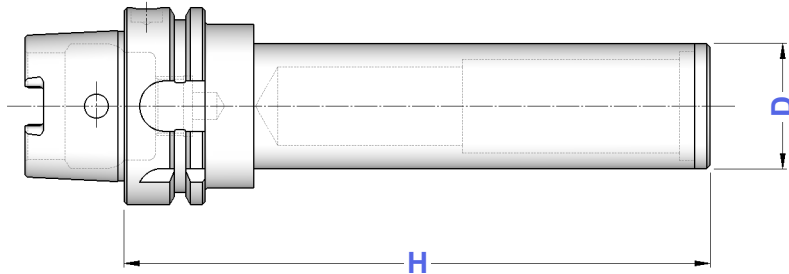
Grani di bloccaggio - pag. 197
Locking screws - page 197



Grani di bloccaggio - pag. 199
Locking screws - page 199

**HSK
A + C****BARRE A STELO TENERO**
BLANK BARS**HSK**

TIPO	Art.	H	D
HSK 32 A - D.35	6440	150	35
HSK 40 A - D.40	6441	150	40
HSK 40 A - D.52	6442	200	52
HSK 50 A - D.52	6443	200	52
HSK 50 A - D.63	6444	200	63
HSK 63 A - D.63	6445	250	63
HSK 63 A - D.80	6446	250	80
HSK 100 A - D.63	6447	200	63
HSK 100 A - D.80	6448	250	80
HSK 100 A - D.90	6449	300	90

**HSK
A + C****BARRE DI CONTROLLO**
TEST ARBORS

TIPO	Art.	H	D
HSK 32 A - D.32 SC	6495	300	32
HSK 40 A - D.32 SC	6496	300	32
HSK 50 A - D.40 SC	6497	300	40
HSK 63 A - D.40 SC	6498	380	40
HSK 100 A - D.40 SC	6499	350	40

Tolleranze della barra

- Rettilineità = 0,003
- Rotondità in rotazione = 0,003
- Cilindricità = 0,003

Bars tolerance

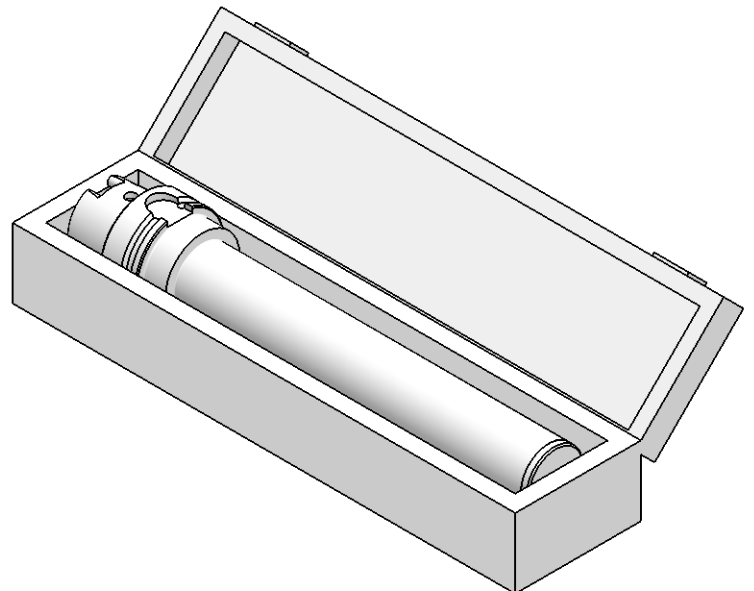
- Straightnes = 0,003
- Runout accuracy = 0,003
- Cylindricity = 0,003

Dati costruttivi

- Costruite in acciaio da cementazione certificato
- Cementate con profondità 0,4 - 0,5 mm
- Temprate, rinvenute, brunite
- Durezza HRC 58 \pm 2, resistenza 800-1000 N/mm²
- Finitura di rettifica esterna
- Collaudate 100% con strumenti di misura certificati

Constructive Features

- Manufactured with casehardening steel
- Casehardened with depth 0,4 - 0,5 mm
- Hardened, tempered, black oxidized
- Hardnes HRC 58 \pm 2, strenght 800-1000 N/mm²
- External grinding finish
- Tested 100% with certified measuring instruments

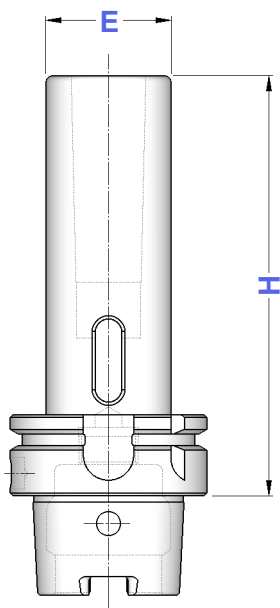


HSK A + C

RIDUZIONI A CONO MORSE PER PUNTE

MORSE TAPER ADAPTERS FOR TWIST DRILLS DIN 228 FORM B SHANK

Balanced G 6,3
8.000 rpm



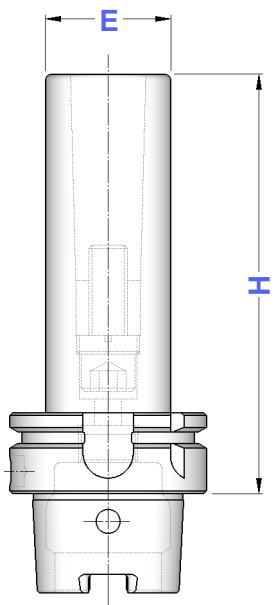
TIPO	Art.	CM	H	E
HSK 40 A - CM 1 PUNTE	6250	1	95	25
HSK 40 A - CM 2 PUNTE	6251	2	110	32
HSK 40 A - CM 3 PUNTE	6252	3	135	38
HSK 50 A - CM 1 PUNTE	6253	1	100	25
HSK 50 A - CM 2 PUNTE	6254	2	120	32
HSK 50 A - CM 3 PUNTE	6255	3	140	40
HSK 63 A - CM 1 PUNTE	6256	1	100	25
HSK 63 A - CM 2 PUNTE	6257	2	115	32
HSK 63 A - CM 3 PUNTE	6258	3	135	40
HSK 63 A - CM 4 PUNTE	6259	4	160	48
HSK 100 A - CM 1 PUNTE	6260	1	110	25
HSK 100 A - CM 2 PUNTE	6261	2	120	32
HSK 100 A - CM 3 PUNTE	6262	3	150	40
HSK 100 A - CM 4 PUNTE	6263	4	170	48
HSK 100 A - CM 5 PUNTE	6264	5	200	63

HSK A + C

RIDUZIONI A CONO MORSE PER FRESE

MORSE TAPER ADAPTERS FOR MILLING CUTTERS DIN 228 FORM A SHANK

Balanced G 6,3
8.000 rpm

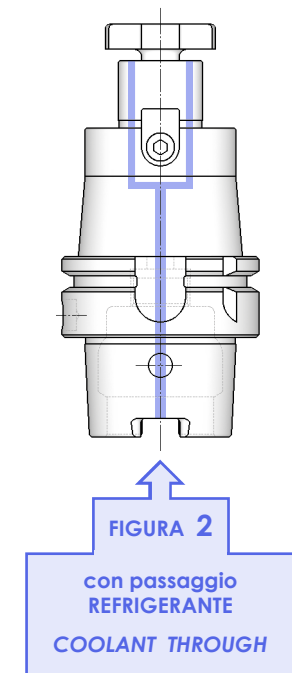
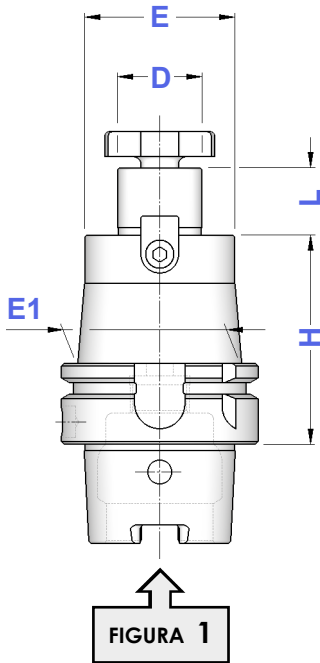


TIPO	Art.	CM	H	E
HSK 40 A - CM 1 FRESE	6275	1	95	25
HSK 40 A - CM 2 FRESE	6276	2	110	32
HSK 40 A - CM 3 FRESE	6277	3	135	38
HSK 50 A - CM 1 FRESE	6278	1	100	25
HSK 50 A - CM 2 FRESE	6279	2	120	32
HSK 50 A - CM 3 FRESE	6280	3	140	40
HSK 63 A - CM 1 FRESE	6281	1	100	25
HSK 63 A - CM 2 FRESE	6282	2	115	32
HSK 63 A - CM 3 FRESE	6283	3	135	40
HSK 63 A - CM 4 FRESE	6284	4	160	48
HSK 100 A - CM 2 FRESE	6286	2	120	32
HSK 100 A - CM 3 FRESE	6287	3	150	40
HSK 100 A - CM 4 FRESE	6288	4	170	48
HSK 100 A - CM 5 FRESE	6289	5	200	63

HSK A + C

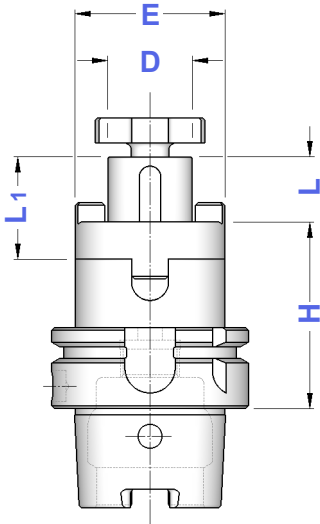
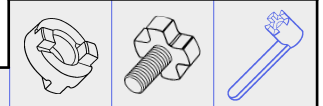
PORTAFRESE FISSI DIN 6357 FACE MILL HOLDERS

Balanced	G 6,3
≤ H160	15.000 rpm
> H160	8.000 rpm



TIPO	FIGURA		D	L	E	E1	4985	4562
	Art.	Art.						
HSK 32 A - D. 16 FISSO/ H 45	6298	—	16	17	38	38	4985	4562
HSK 32 A - D. 22 FISSO/ H 50	6299	—	22	19	48	48	4986	4563
HSK 40 A - D. 16 FISSO/ H 45	6300	6556	16	17	38	38	4985	4562
HSK 40 A - D. 22 FISSO/ H 50	6302	6557	22	19	48	48	4986	4563
HSK 40 A - D. 27 FISSO/ H 55	6304	6558	27	21	58	58	4987	4564
HSK 50 A - D. 16 FISSO/ H 50	6306	6559	16	17	38	38	4985	4562
HSK 50 A - D. 22 FISSO/ H 60	6309	6560	22	19	48	48	4986	4563
HSK 50 A - D. 27 FISSO/ H 60	6312	6561	27	21	58	58	4987	4564
HSK 50 A - D. 32 FISSO/ H 60	6315	6562	32	24	66	66	4988	4565
HSK 50 A - D. 40 FISSO/ H 70	6316	6540	40	27	80	80	4989	4566
HSK 63 A - D. 16 FISSO/ H 50	6317	6563	16	17	38	38	4985	4562
HSK 63 A - D. 16 FISSO/ H 100	6318	6547						
HSK 63 A - D. 16 FISSO/ H 160	6319	6549						
HSK 63 A - D. 16 FISSO/ H 200	6519	6811						
HSK 63 A - D. 22 FISSO/ H 50	6320	6564	22	19	48	48	4986	4563
HSK 63 A - D. 22 FISSO/ H 100	6321	6554						
HSK 63 A - D. 22 FISSO/ H 160	6322	6555						
HSK 63 A - D. 22 FISSO/ H 200	6522	6812						
HSK 63 A - D. 27 FISSO/ H 60	6323	6565	27	21	58	58	4987	4564
HSK 63 A - D. 27 FISSO/ H 100	6324	6601						
HSK 63 A - D. 27 FISSO/ H 160	6325	6603						
HSK 63 A - D. 27 FISSO/ H 200	6525	6813						
HSK 63 A - D. 32 FISSO/ H 60	6326	6566	32	24	66	66	4988	4565
HSK 63 A - D. 32 FISSO/ H 100	6327	6605						
HSK 63 A - D. 32 FISSO/ H 160	6328	6607						
HSK 63 A - D. 40 FISSO/ H 60	6329	6567						
HSK 63 A - D. 40 FISSO/ H 100	6330	6609	40	27	88	88	4989	4566
HSK 63 A - D. 40 FISSO/ H 160	6331	6611						
HSK 100 A - D. 16 FISSO/ H 50	6332	6568						
HSK 100 A - D. 16 FISSO/ H 100	6333	6613	43					
HSK 100 A - D. 16 FISSO/ H 160	6334	6615	47					
HSK 100 A - D. 16 FISSO/ H 200	6349	6617	48					
HSK 100 A - D. 16 FISSO/ H 250	6351	6618						
HSK 100 A - D. 22 FISSO/ H 50	6335	6569	22	19	48	48	4986	4563
HSK 100 A - D. 22 FISSO/ H 100	6336	6620				53		
HSK 100 A - D. 22 FISSO/ H 160	6337	6621				56		
HSK 100 A - D. 22 FISSO/ H 200	6353	6623				58		
HSK 100 A - D. 22 FISSO/ H 250	6355	6624						
HSK 100 A - D. 27 FISSO/ H 50	6338	6570	27	21	58	58	4987	4564
HSK 100 A - D. 27 FISSO/ H 100	6339	6626				66		
HSK 100 A - D. 27 FISSO/ H 160	6340	6627				67		
HSK 100 A - D. 27 FISSO/ H 200	6357	6629				68		
HSK 100 A - D. 27 FISSO/ H 250	6358	6630						
HSK 100 A - D. 32 FISSO/ H 50	6341	6571	32	24	66	66	4988	4565
HSK 100 A - D. 32 FISSO/ H 100	6342	6632				74		
HSK 100 A - D. 32 FISSO/ H 160	6343	6633				75		
HSK 100 A - D. 32 FISSO/ H 200	6360	6635				77		
HSK 100 A - D. 32 FISSO/ H 250	6361	6636						
HSK 100 A - D. 40 FISSO/ H 60	6344	6572	40	27	80	80	4989	4566
HSK 100 A - D. 40 FISSO/ H 100	6345	6638						
HSK 100 A - D. 40 FISSO/ H 160	6346	6639						
HSK 100 A - D. 40 FISSO/ H 200	6347	6642						
HSK 100 A - D. 40 FISSO/ H 250	6348	6644						

Balanced G 6,3
8.000 rpm



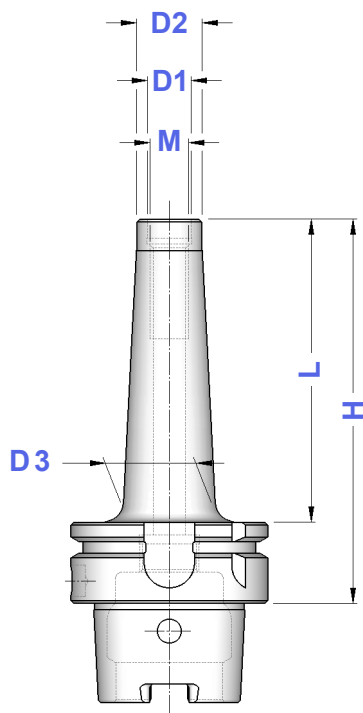
TIPO	Art.	D	L1	L	E			
HSK 40 A - D.16 C / H 45	6350	16	27	17	32	4090	4985	4562
HSK 40 A - D.22 C / H 55	6352	22	31	19	40	4091	4986	4563
HSK 40 A - D.27 C / H 65	6354	27	33	21	48	4092	4987	4564
HSK 50 A - D.16 C / H 50	6356	16	27	17	32	4090	4985	4562
HSK 50 A - D.22 C / H 50	6359	22	31	19	40	4091	4986	4563
HSK 50 A - D.27 C / H 65	6362	27	33	21	48	4092	4987	4564
HSK 50 A - D.32 C / H 65	6365	32	38	24	58	4093	4988	4565
HSK 50 A - D.40 C / H 75	6366	40	41	27	70	4094	4989	4566
HSK 63 A - D.16 C / H 60	6368	16	27	17	32	4090	4985	4562
HSK 63 A - D.16 C / H 100	6369							
HSK 63 A - D.16 C / H 160	6370							
HSK 63 A - D.22 C / H 60	6371	22	31	19	40	4091	4986	4563
HSK 63 A - D.22 C / H 100	6372							
HSK 63 A - D.22 C / H 160	6373							
HSK 63 A - D.27 C / H 60	6374	27	33	21	48	4092	4987	4564
HSK 63 A - D.27 C / H 100	6375							
HSK 63 A - D.27 C / H 160	6376							
HSK 63 A - D.32 C / H 65	6377	32	38	24	58	4093	4988	4565
HSK 63 A - D.32 C / H 100	6378							
HSK 63 A - D.32 C / H 160	6379							
HSK 63 A - D.40 C / H 70	6380	40	41	27	70	4094	4989	4566
HSK 63 A - D.40 C / H 100	6381							
HSK 63 A - D.40 C / H 160	6382							
HSK 100 A - D.16 C / H 60	6383	16	27	17	32	4090	4985	4562
HSK 100 A - D.16 C / H 100	6384							
HSK 100 A - D.16 C / H 160	6385							
HSK 100 A - D.22 C / H 60	6386	22	31	19	40	4091	4986	4563
HSK 100 A - D.22 C / H 100	6387							
HSK 100 A - D.22 C / H 160	6388							
HSK 100 A - D.27 C / H 60	6389	27	33	21	48	4092	4987	4564
HSK 100 A - D.27 C / H 100	6390							
HSK 100 A - D.27 C / H 160	6391							
HSK 100 A - D.32 C / H 60	6392	32	38	24	58	4093	4988	4565
HSK 100 A - D.32 C / H 100	6393							
HSK 100 A - D.32 C / H 160	6394							
HSK 100 A - D.40 C / H 70	6395	40	41	27	70	4094	4989	4566
HSK 100 A - D.40 C / H 100	6396							
HSK 100 A - D.40 C / H 160	6397							

Dove trovare questi Articoli nel Catalogo Generale

Where to find those Items
on General Catalogue

	Giunti di trascinamento - pag. 194 Clutch drive rings - page 194
	Viti testa a croce - pag. 194 Cross head screws - page 194
	Chiavi per testa a croce - pag. 194 Wrenches for cross head - page 194

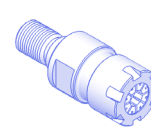
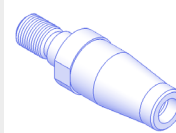
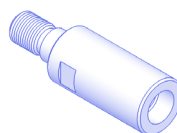
Balanced G 2,5
20.000 rpm

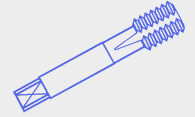


TIPO	Art.	M	D1	D2	D3	H	L
HSK 50 A - M 6 / H 59	6645	M 6	6,5	10	10	59	33
HSK 50 A - M 6 / H 84	6647				20	84	58
HSK 50 A - M 6 / H 109	6648				23	109	83
HSK 50 A - M 8 / H 59	6650	M 8	8,5	13	15	59	33
HSK 50 A - M 8 / H 84	6651				23	84	58
HSK 50 A - M 8 / H 109	6653				23	109	83
HSK 50 A - M 8 / H 134	6654				25	134	108
HSK 50 A - M 10 / H 59	6656	M 10	10,5	18	20	59	33
HSK 50 A - M 10 / H 84	6657				25	84	58
HSK 50 A - M 10 / H 109	6659				28	109	83
HSK 50 A - M 10 / H 134	6660				30	134	108
HSK 50 A - M 12 / H 59	6662	M 12	12,5	21	24	59	33
HSK 50 A - M 12 / H 84	6663				24	84	58
HSK 50 A - M 12 / H 109	6665				31	109	83
HSK 50 A - M 12 / H 134	6666				31	134	108
HSK 63 A - M 6 / H 59	6669	M 6	6,5	10	10	59	33
HSK 63 A - M 6 / H 84	6671				20	84	58
HSK 63 A - M 6 / H 109	6672				23	109	83
HSK 63 A - M 8 / H 59	6673	M 8	8,5	13	15	59	33
HSK 63 A - M 8 / H 76	6674				23	76	50
HSK 63 A - M 8 / H 101	6675				23	101	75
HSK 63 A - M 8 / H 126	6676				26	126	100
HSK 63 A - M 10 / H 59	6677	M 10	10,5	18	19,5	59	33
HSK 63 A - M 10 / H 76	6678				23	76	50
HSK 63 A - M 10 / H 101	6679				28	101	75
HSK 63 A - M 10 / H 126	6680				32	126	100
HSK 63 A - M 10 / H 159	6681				34	159	133
HSK 63 A - M 12 / H 59	6682	M 12	12,5	21	24	59	33
HSK 63 A - M 12 / H 76	6683				24	76	50
HSK 63 A - M 12 / H 101	6684				31	101	75
HSK 63 A - M 12 / H 126	6685				33	126	100
HSK 63 A - M 12 / H 159	6686				31	159	133
HSK 63 A - M 12 / H 184	6687				39	184	158
HSK 63 A - M 12 / H 209	6701				42	209	183
HSK 63 A - M 16 / H 59	6688				M 16	17,0	29
HSK 63 A - M 16 / H 76	6689	34	76	50			
HSK 63 A - M 16 / H 101	6690	34	101	75			
HSK 63 A - M 16 / H 126	6691	36	126	100			
HSK 63 A - M 16 / H 159	6692	39	159	133			
HSK 63 A - M 16 / H 184	6693	39	184	158			
HSK 63 A - M 16 / H 209	6703	42	209	183			
HSK 100 A - M 12 / H 87	6694	M 12	12,5	21	24	87	58
HSK 100 A - M 12 / H 137	6695				47	137	108
HSK 100 A - M 12 / H 187	6696				55	187	158
HSK 100 A - M 16 / H 87	6697	M 16	17,0	29	32	87	58
HSK 100 A - M 16 / H 137	6698				42	137	108
HSK 100 A - M 16 / H 187	6699				55	187	158
HSK 100 A - M 16 / H 237	6705				55	237	208

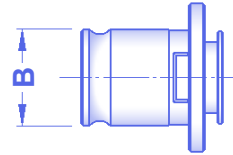
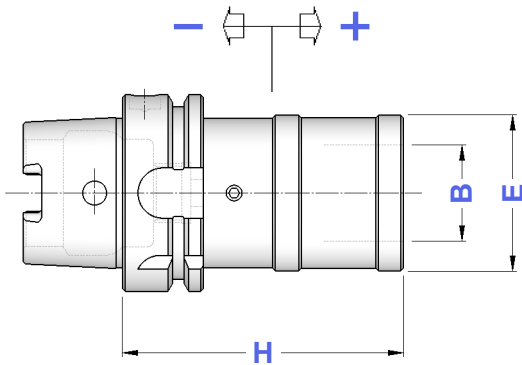
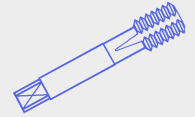
**Prolunghe, Riduzioni, Portapinze ER con
attacco filettato a pag. 43 del Catalogo Generale**

*Extensions, Reductions, ER Collet Chucks with
threaded shank from page 43 on General Catalogue*

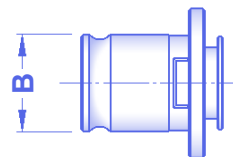
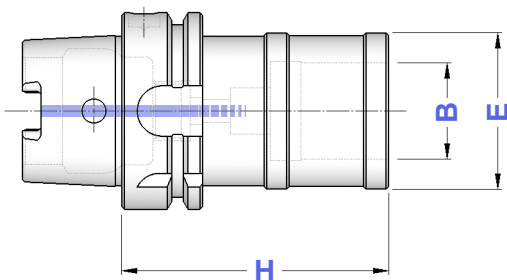


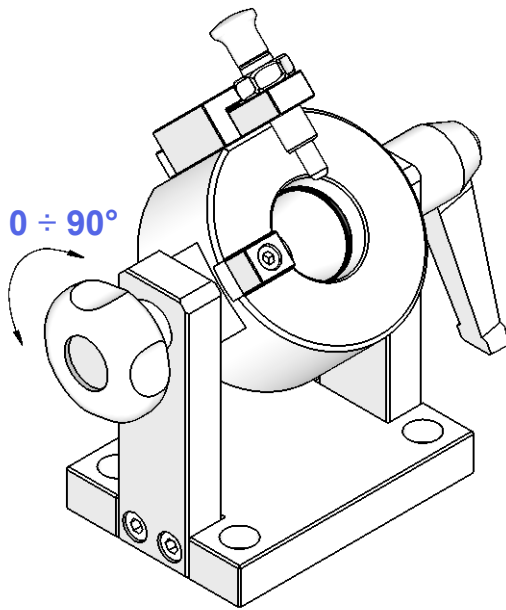
**HSK
A + C****MASCHIATORI A CAMBIO RAPIDO CON
DOPPIA COMPENSAZIONE**
DOUBLE COMPENSATION QUICK CHANGE TAP HOLDERS

TIPO	Art.	H	E	B	COMPENSAZIONE	
HSK 40 A - B. 1	6450	80	36	19	- 7,5 + 7,5	M 3 ÷ M 12 (*M16)
HSK 40 A - B. 2	6451	100	53	31	- 10,0 + 10,0	M 6 ÷ M 20 (*M30)
HSK 50 A - B. 1	6452	80	36	19	- 7,5 + 7,5	M 3 ÷ M 12 (*M16)
HSK 50 A - B. 2	6453	130	53	31	- 10,0 + 10,0	M 6 ÷ M 20 (*M30)
HSK 63 A - B. 1	6454	80	36	19	- 7,5 + 7,5	M 3 ÷ M 12 (*M16)
HSK 63 A - B. 2	6455	130	53	31	- 10,0 + 10,0	M 6 ÷ M 20 (*M30)
HSK 63 A - B. 3	6456	165	78	48	- 17,5 + 17,5	M14 ÷ M 33 (*M48)
HSK 100 A - B. 1	6457	80	36	19	- 7,5 + 7,5	M 3 ÷ M 12 (*M16)
HSK 100 A - B. 2	6458	110	53	31	- 10,0 + 10,0	M 6 ÷ M 20 (*M30)
HSK 100 A - B. 3	6459	160	78	48	- 17,5 + 17,5	M14 ÷ M 33 (*M48)


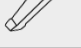

* Bussole con grani
Adapters with screws**Bussole a Maschiare da pag. 172
a pag. 175 del Catalogo Generale**
Tap Adapters on General Catalogue
from page 172 to page 175**HSK
A + C****MASCHIATORI A CAMBIO RAPIDO
SENZA COMPENSAZIONE**
QUICK CHANGE TAP HOLDERS WITHOUT COMPENSATION

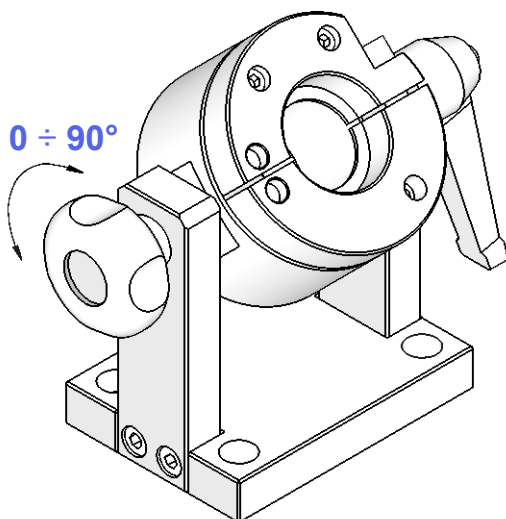
TIPO	Art.	H	E	B	
HSK 40 A - B. 1 FISSO	6470	55	33	19	M 3 ÷ M 12 (*M16)
HSK 40 A - B. 2 FISSO	6471	90	50	31	M 6 ÷ M 20 (*M30)
HSK 50 A - B. 1 FISSO	6472	60	33	19	M 3 ÷ M 12 (*M16)
HSK 50 A - B. 2 FISSO	6473	100	50	31	M 6 ÷ M 20 (*M30)
HSK 63 A - B. 1 FISSO	6474	60	33	19	M 3 ÷ M 12 (*M16)
HSK 63 A - B. 2 FISSO	6475	90	50	31	M 6 ÷ M 20 (*M30)
HSK 63 A - B. 3 FISSO	6476	130	72	48	M14 ÷ M 33 (*M48)
HSK 100 A - B. 1 FISSO	6477	70	33	19	M 3 ÷ M 12 (*M16)
HSK 100 A - B. 2 FISSO	6478	90	50	31	M 6 ÷ M 20 (*M30)
HSK 100 A - B. 3 FISSO	6479	115	72	48	M14 ÷ M 33 (*M48)

* Bussole con grani
Adapters with screws**Bussole a Maschiare da pag. 172
a pag. 175 del Catalogo Generale**
Tap Adapters on General Catalogue
from page 172 to page 175





ISO DIN 2080 - DIN 69871 - BT
ISO SHANKS



TIPO	Art.	L x P x H			
SMU - CONO 30	4438	135 x 100 x 155	1031	1032	1033
SMU - CONO 40	4439				
SMU - CONO 45	4440	135 x 100 x 160			
SMU - CONO 50	4441	135 x 100 x 195			



HSK DIN 69893 (A+C - B+D - E - F)
HSK DIN 69893 SHANKS

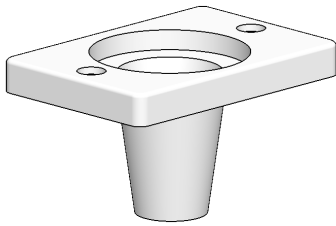
TIPO	Art.	L x P x H		
SMU - HSK 25	4598	135 x 100 x 175	1032	1033
SMU - HSK 32	4599			
SMU - HSK 40	4600			
SMU - HSK 50	4601			
SMU - HSK 63	4602			
SMU - HSK 80	4603	135 x 100 x 205		
SMU - HSK 100	4604			

POLYGON-SHANK (ISO 26623-1) - KM
POLYGON and KM SHANKS

TIPO	Art.	L x P x H		
SMU - KM 25	4598	135 x 100 x 175	1032	1033
SMU - KM 32 - PSC 32	4599			
SMU - KM 40 - PSC 40	4600			
SMU - KM 50 - PSC 50	4601			
SMU - KM 63 - PSC 63	4602			
SMU - KM 80 - PSC 80	4603	135 x 100 x 205		
SMU - KM 100 - PSC 100	4604			

SUPPORTI

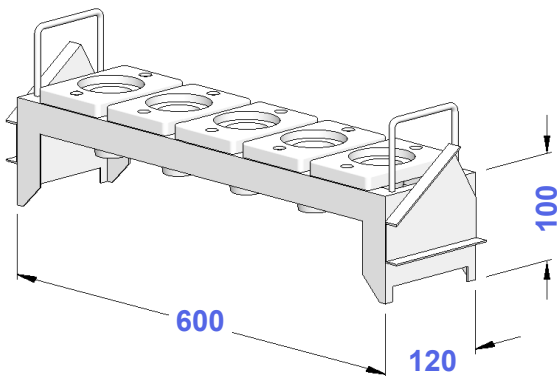
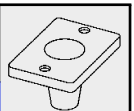
BOCCOLE PLASTIC BUSHES



TIPO	Art.	
BOCCOLA ISO 30	4416	0033
BOCCOLA ISO 40	4417	0033
BOCCOLA ISO 45	4418	0033
BOCCOLA ISO 50	4419	0033
BOCCOLA HSK 50 - KM 50 - PSC 50	4430	0033
BOCCOLA HSK 63 - KM 63 - PSC 63	4431	0033
BOCCOLA HSK100 - KM 100 - PSC 100	5543	0033
BOCCOLA CM 4	4400	0033
BOCCOLA CM 5	4418	0033
BOCCOLA Ø 32 - VDI 30	5531	0033
BOCCOLA Ø 40 - VDI 40	5532	0033
BOCCOLA Ø 50 - VDI 50	5533	0033

SUPPORTI

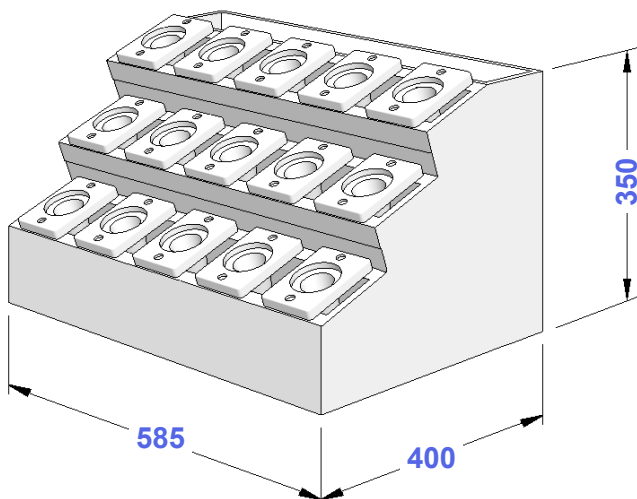
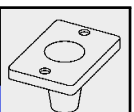
UNITA' DA BANCO BENCH UNITIES



TIPO	Art.	N° SEDI	
UNITA' ISO 30	4404	6	4416
UNITA' ISO 40	4405	6	4417
UNITA' ISO 45	4330	6	4418
UNITA' ISO 50	4406	5	4419
UNITA' HSK 50 - KM 50 - PSC 50	4428	6	4430
UNITA' HSK 63 - KM 63 - PSC 63	4429	6	4431
UNITA' HSK100 - KM 100 - PSC 100	4794	5	5543
UNITA' CM 4	4329	6	4400
UNITA' CM 5	4330	6	4418
UNITA' Ø 32 - VDI 30	5369	6	5531
UNITA' Ø 40 - VDI 40	5370	6	5532
UNITA' Ø 50 - VDI 50	5371	5	5533

SUPPORTI

MAGAZZINI PORTACONI TOOLS STORES



TIPO	Art.	N° SEDI	
MAG. ISO 30	3700	15	4416
MAG. ISO 40	3701	15	4417
MAG. ISO 45	3702	15	4418
MAG. ISO 50	3703	12	4419
MAG. HSK 50 - KM 50 - PSC 50	3750	15	4430
MAG. HSK 63 - KM 63 - PSC 63	3751	15	4431
MAG. HSK100 - KM 100 - PSC 100	3875	12	5543
MAG. CM 4	3696	15	4400
MAG. CM 5	3702	15	4418
MAG. Ø 32 - VDI 30	3705	15	5531
MAG. Ø 40 - VDI 40	3706	15	5532
MAG. Ø 50 - VDI 50	5557	12	5533