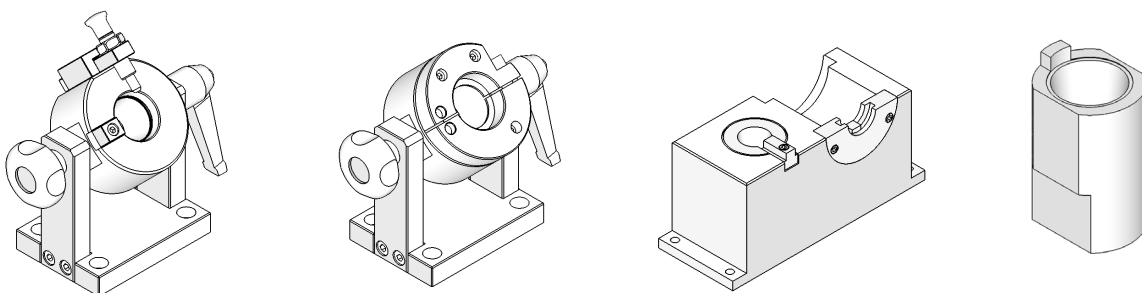


# INDICE RICAMBI ED ACCESSORI MANDRINERIA

## INDEX OF SPARES AND ACCESORIES FOR CHUCKS

### SMONTACONI ORIENTABILI E SUPPORTI DI MONTAGGIO

ADJUSTABLE MOUNTING AND ASSEMBLY SUPPORTS

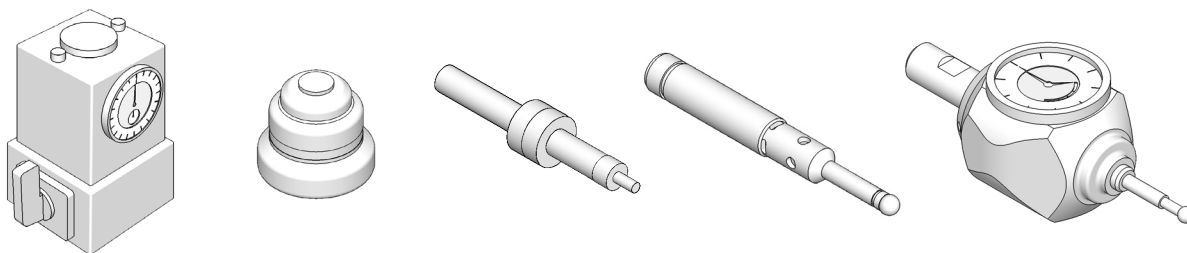


Programma completo da pag.

**186**

### STRUMENTI - AZZERATORI E CENTRATORI

INSTRUMENTS - ZERO SETTINGS AND EDGE-FINDERS

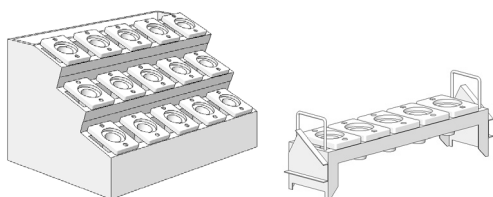


Programma completo da pag.

**188**

### MAGAZZINI PORTACONI

TOOL STORES

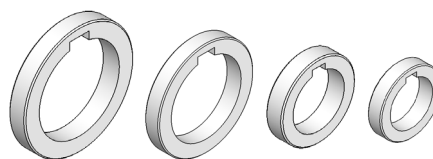


Programma completo a pag.

**192**

### DISTANZIALI

SPACERS

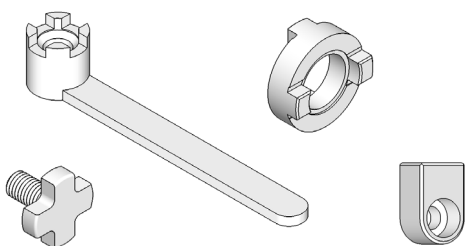


Programma completo a pag.

**193**

### RICAMBI PER PORTAFRESA

SPARES FOR MILL HOLDERS

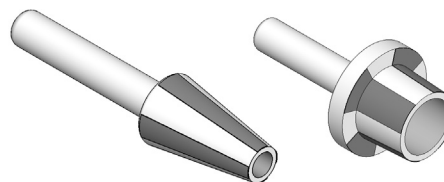


Programma completo da pag.

**194**

### TAMPONI PULITORI

TAPER CLEANERS

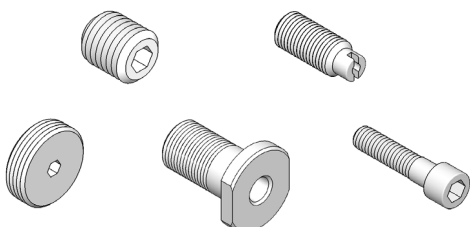


Programma completo a pag.

**196**

### GRANI E VITI

SCREWS

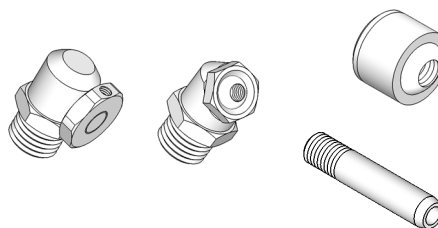


Programma completo da pag.

**197**

### UGELLI E PROLUNGHE

NOZZLES AND EXTENSIONS

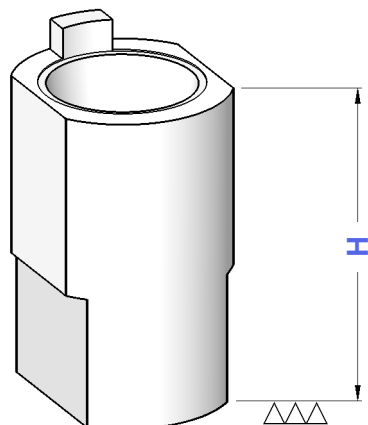


Programma completo a pag.

**263**

## ATTREZZI BMU

### BOCCOLE DI MONTAGGIO in ACCIAIO STEEL TOOLING CLAMPERS



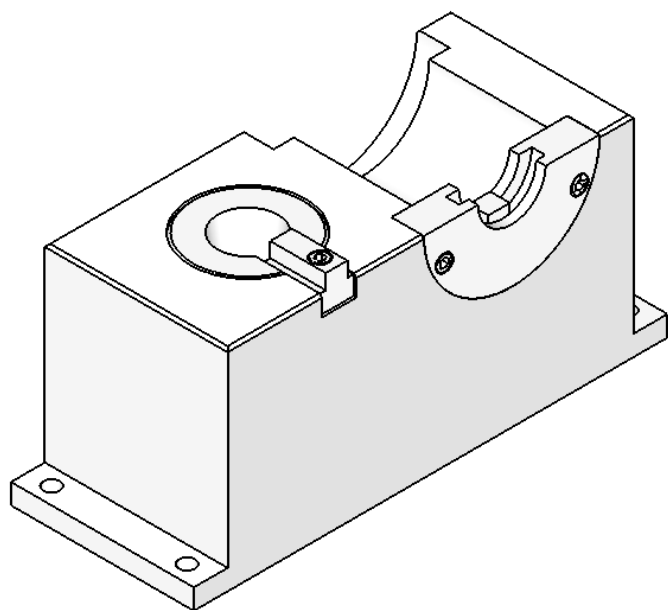
TIPO	Art.	H
BMU - CONO 30	<b>2190</b>	70
BMU - CONO 40	<b>2191</b>	95
BMU - CONO 50	<b>2193</b>	130

Costruiti in acciaio temperato,  
bruniti e rettificati

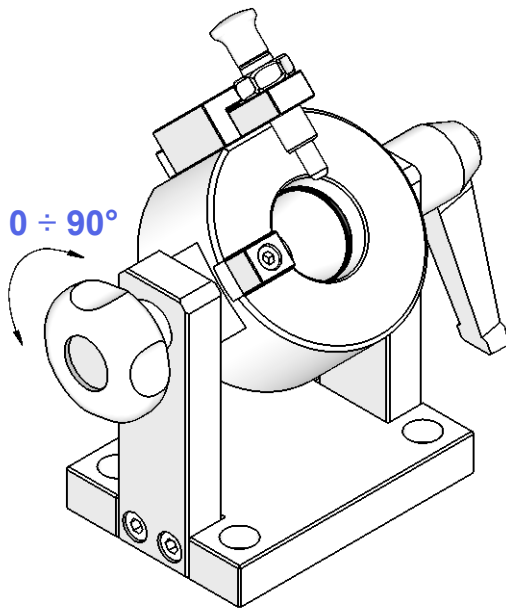
Made with hardened steel,  
bluing and grinded

## ATTREZZI SMD


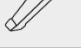

### SUPPORTI DI MONTAGGIO A 2 POSIZIONI DOUBLE POSITION TIGHTENING FIXTURES

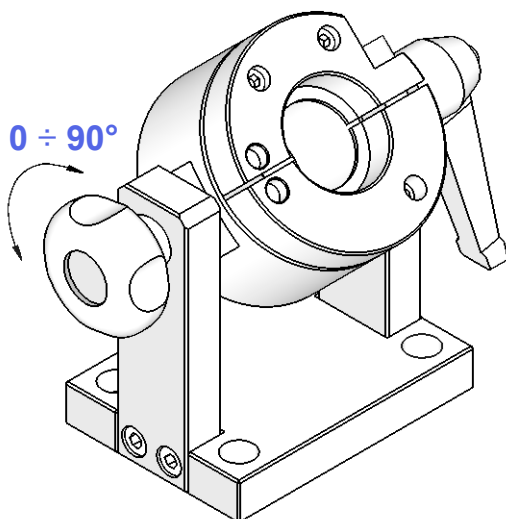


TIPO	Art.	L x P x H
SMD - ISO 30/DIN 2080	<b>4605</b>	350 x 135 x 155
SMD - ISO 40/DIN 2080	<b>4606</b>	
SMD - ISO 50/DIN 2080	<b>4607</b>	
SMD - TC 30/DIN 69871	<b>4608</b>	
SMD - TC 40/DIN 69871	<b>4609</b>	
SMD - TC 50/DIN 69871	<b>4610</b>	
SMD - BT 30/MAS 403	<b>4611</b>	
SMD - BT 40/MAS 403	<b>4612</b>	
SMD - BT 50/MAS 403	<b>4613</b>	
SMD - HSK 32 A+C	<b>4618</b>	350 x 135 x 155
SMD - HSK 40 A+C	<b>4619</b>	
SMD - HSK 50 A+C	<b>4620</b>	
SMD - HSK 63 A+C	<b>4621</b>	
SMD - HSK 100 A+C	<b>4622</b>	
SMD - HSK 40 E	<b>4623</b>	
SMD - HSK 50 E+F	<b>4624</b>	
SMD - HSK 63 E+F	<b>4625</b>	
SMD - VDI 16/DIN 69880	<b>9341</b>	350 x 135 x 155
SMD - VDI 20/DIN 69880	<b>4614</b>	
SMD - VDI 30/DIN 69880	<b>4615</b>	
SMD - VDI 40/DIN 69880	<b>4616</b>	
SMD - VDI 50/DIN 69880	<b>4617</b>	
SMD - VDI 60/DIN 69880	<b>9342</b>	





**ISO DIN 2080 - DIN 69871 - BT**  
ISO SHANKS



TIPO	Art.	L x P x H			
SMU - CONO 30	<b>4438</b>	135 x 100 x 155	1031	1032	1033
SMU - CONO 40	<b>4439</b>				
SMU - CONO 45	<b>4440</b>	135 x 100 x 160			
SMU - CONO 50	<b>4441</b>	135 x 100 x 195			



**HSK DIN 69893 (A+C - B+D - E - F)**  
HSK DIN 69893 SHANKS

TIPO	Art.	L x P x H		
SMU - HSK 25	<b>4598</b>	135 x 100 x 175	1032	1033
SMU - HSK 32	<b>4599</b>			
SMU - HSK 40	<b>4600</b>			
SMU - HSK 50	<b>4601</b>			
SMU - HSK 63	<b>4602</b>			
SMU - HSK 80	<b>4603</b>	135 x 100 x 205		
SMU - HSK 100	<b>4604</b>			

**POLYGON-SHANK (ISO 26623-1) - KM**  
POLYGON and KM SHANKS

TIPO	Art.	L x P x H		
SMU - KM 25	<b>4598</b>	135 x 100 x 175	1032	1033
SMU - KM 32 - PSC 32	<b>4599</b>			
SMU - KM 40 - PSC 40	<b>4600</b>			
SMU - KM 50 - PSC 50	<b>4601</b>			
SMU - KM 63 - PSC 63	<b>4602</b>			
SMU - KM 80 - PSC 80	<b>4603</b>	135 x 100 x 205		
SMU - KM 100 - PSC 100	<b>4604</b>			

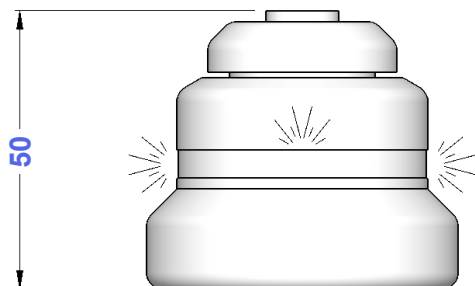
**STRUMENTI  
ZOP**

**AZZERATORE MAGNETICO LUMINOSO**  
BRIGHT MAGNETIC RESETTER

BATTERY

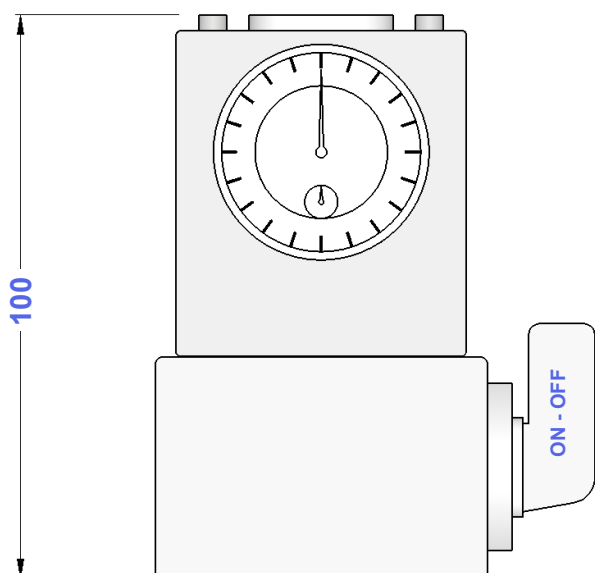


TIPO	Art.	
ZOP 50	0351	0266

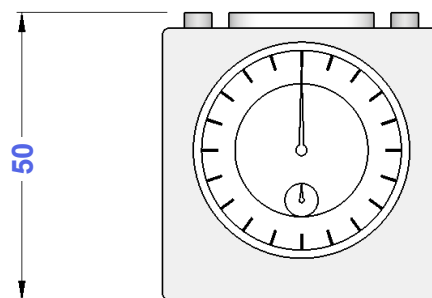


**STRUMENTI  
ZDI**

**AZZERATORI MAGNETICI CON COMPARATORE**  
BUILD-IN MAGNETIC RESETTERS WITH COMPARATOR



TIPO	Art.
ZDI 100	0354



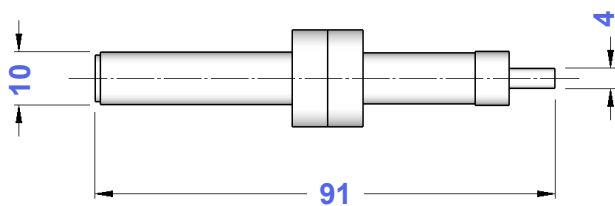
TIPO	Art.
ZDI 50	0349

## STRUMENTI CMP

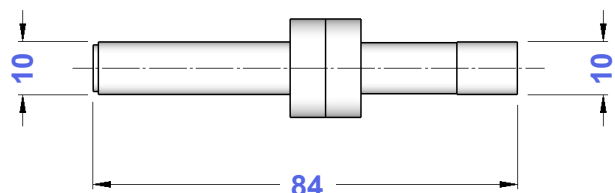
### CENTRATORI MECCANICI FLOTTANTI FLOATING POSITION DETECTORS



TIPO	Art.	
CMP 10 - 4	<b>0356</b>	0333



Nella confezione dei CMP è compresa una molla di ricambio  
In CMP wrapping is included one spare spring



TIPO	Art.	
CMP 10 - 10	<b>0357</b>	0333

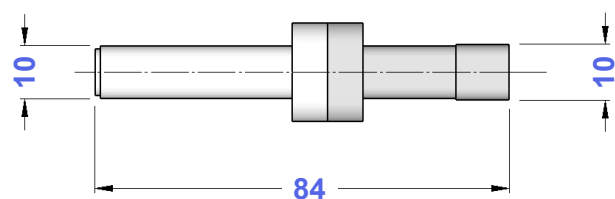
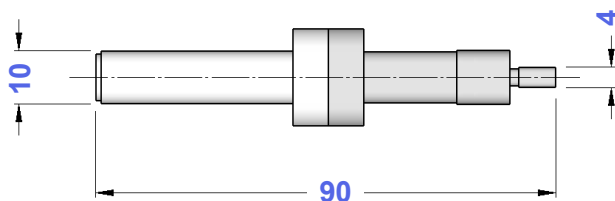


## STRUMENTI CMA

### CENTRATORI MECCANICI FLOTTANTI ANTIMAGNETICI ANTIMAGNETIC FLOATING POSITION DETECTORS



TIPO	Art.	
CMA 10 - 4	<b>0445</b>	0444



TIPO	Art.	
CMA 10 - 10	<b>0447</b>	0444

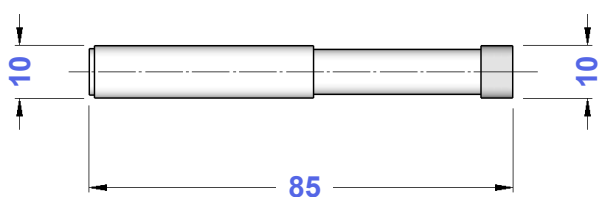


## STRUMENTI CMC

### CENTRATORE MECCANICO FLOTTANTE ANTIMAGNETICO CON TESTINA CERAMICA ANTIMAGNETIC FLOATING POSITION DETECTOR WITH EARTHENWARE HEAD






TIPO	Art.	
CMC 10 - 10	<b>0457</b>	0458

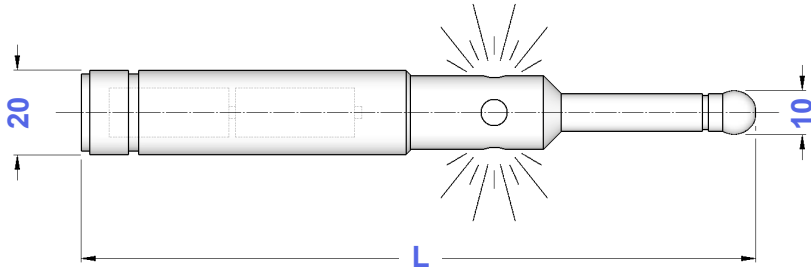


**STRUMENTI  
CSL**

**CENTRATORI A SFERA LUMINOSI**  
BRIGHT ELECTRONIC POSITION DETECTORS




SPHERE	LED	BATTERY
		

TIPO	Art.	L	SPHERE	LED	BATTERY
CSL 125	<b>0355</b>	125	0587	0545	0562
CSL 160	<b>0358</b>	160	0587	0545	0562

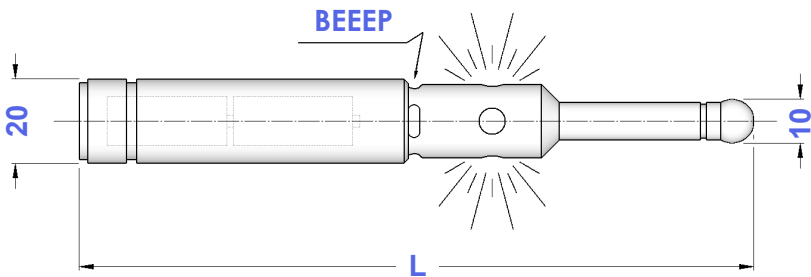


**STRUMENTI  
ES**

**CENTRATORE A SFERA LUMINOSO E SONORO**  
BRIGHT-SONOROUS ELECTRONIC POSITION DETECTOR




SPHERE	LED	BATTERY
		

TIPO	Art.	L	SPHERE	LED	BATTERY
ES 20 - 10	<b>0359</b>	160	0587	0549	0562

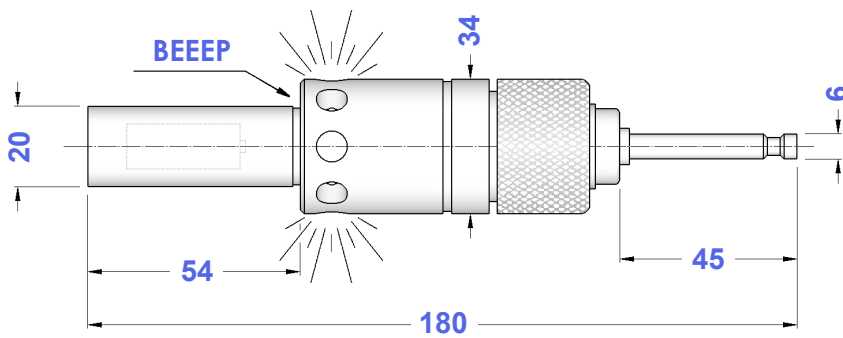


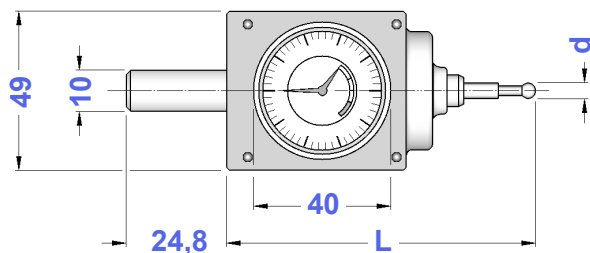
**STRUMENTI  
CTL**

**CENTRATORE 3D LUMINOSO E SONORO**  
BRIGHT-SONOROUS 3D ELECTRONIC POSITION DETECTOR


TASTER	LED	BATTERY
		

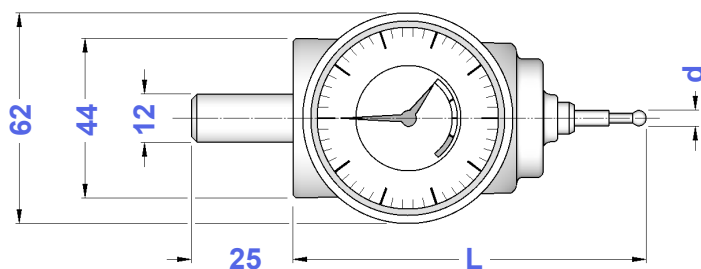
TIPO	Art.	TASTER	LED	BATTERY
CTL 20 - 6	<b>0350</b>	0322	0328	0595






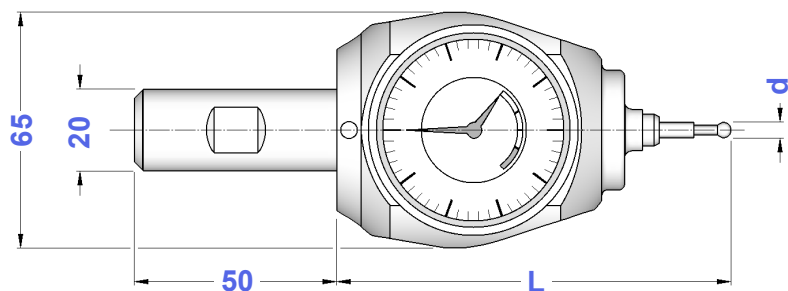
**ATTACCO D.10**  
D.10 SHANK

TIPO	Art.	d	L	
CTZ 10 - 04	<b>0541</b>	4	96	0619
CTZ 10 - 08	<b>0542</b>	8	136	0629




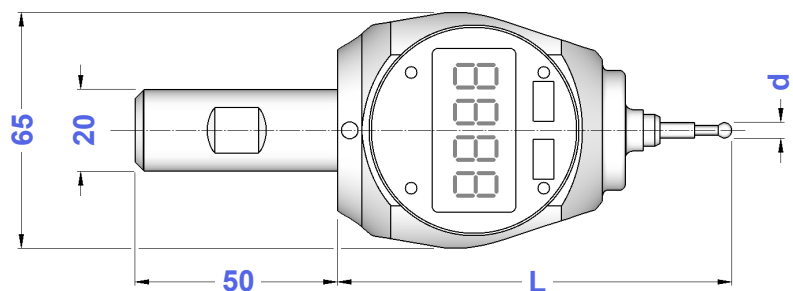
**ATTACCO D.12**  
D.12 SHANK

TIPO	Art.	d	L	
CTN 12 - 04	<b>0543</b>	4	100	0619
CTN 12 - 08	<b>0544</b>	8	140	0629




**ATTACCO D.20**  
D.20 SHANK

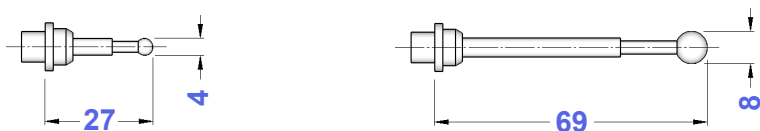
TIPO	Art.	d	L	
CTA 20 - 04	<b>0584</b>	4	113	0619
CTA 20 - 08	<b>0585</b>	8	153	0629



**DIGITALE - ATTACCO D.20**  
DIGITAL - D.20 SHANK

TIPO	Art.	d	L	
CTD 20 - 04	<b>0581</b>	4	113	0619
CTD 20 - 08	<b>0582</b>	8	153	0629

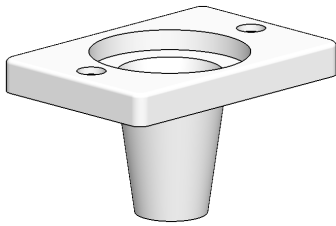
**ASTINE CERAMICHE**  
EARTHENWARE TASTERS



TIPO	Art.
ASTINA CORTA d. 4	<b>0619</b>
ASTINA LUNGA d. 8	<b>0629</b>

## SUPPORTI

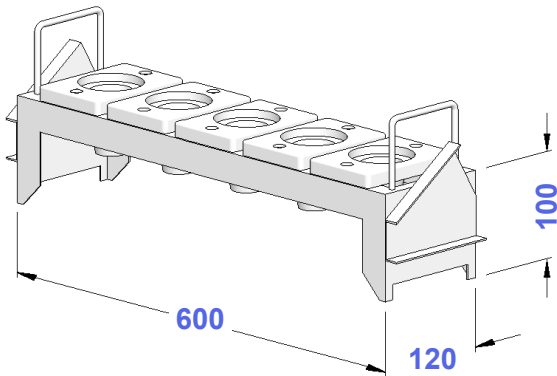
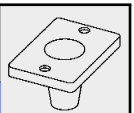
### BOCCOLE PLASTIC BUSHES



TIPO	Art.	
BOCCOLA ISO 30	4416	0033
BOCCOLA ISO 40	4417	0033
BOCCOLA ISO 45	4418	0033
BOCCOLA ISO 50	4419	0033
BOCCOLA HSK 50 - KM 50 - PSC 50	4430	0033
BOCCOLA HSK 63 - KM 63 - PSC 63	4431	0033
BOCCOLA HSK100 - KM 100 - PSC 100	5543	0033
BOCCOLA CM 4	4400	0033
BOCCOLA CM 5	4418	0033
BOCCOLA Ø 32 - VDI 30	5531	0033
BOCCOLA Ø 40 - VDI 40	5532	0033
BOCCOLA Ø 50 - VDI 50	5533	0033

## SUPPORTI

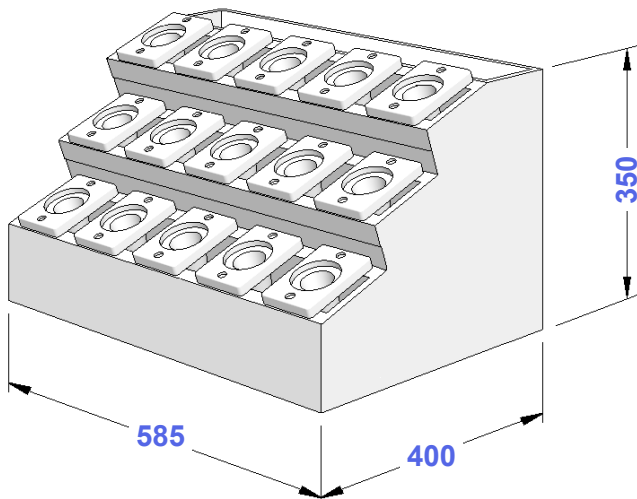
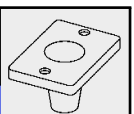
### UNITA' DA BANCO BENCH UNITIES



TIPO	Art.	N° SEDI	
UNITA' ISO 30	4404	6	4416
UNITA' ISO 40	4405	6	4417
UNITA' ISO 45	4330	6	4418
UNITA' ISO 50	4406	5	4419
UNITA' HSK 50 - KM 50 - PSC 50	4428	6	4430
UNITA' HSK 63 - KM 63 - PSC 63	4429	6	4431
UNITA' HSK100 - KM100 - PSC100	4794	5	5543
UNITA' CM 4	4329	6	4400
UNITA' CM 5	4330	6	4418
UNITA' Ø 32 - VDI 30	5369	6	5531
UNITA' Ø 40 - VDI 40	5370	6	5532
UNITA' Ø 50 - VDI 50	5371	5	5533

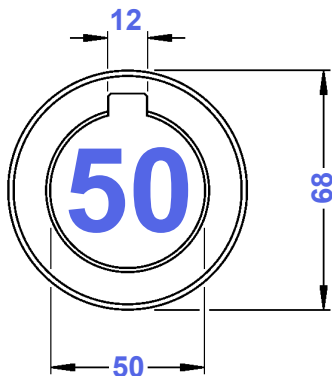
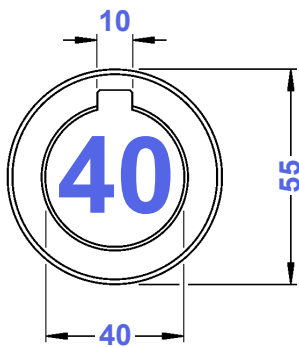
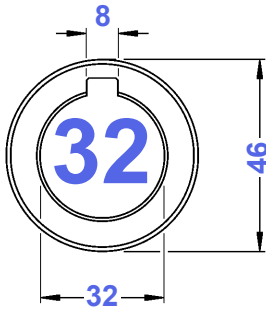
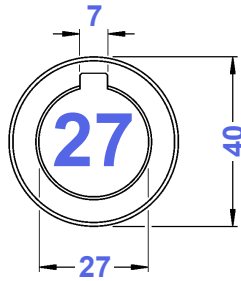
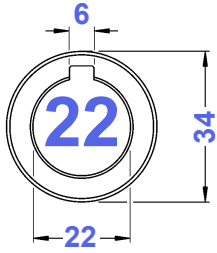
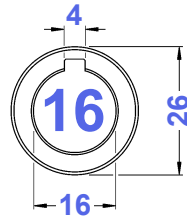
## SUPPORTI

### MAGAZZINI PORTACONI TOOLS STORES



TIPO	Art.	N° SEDI	
MAG. ISO 30	3700	15	4416
MAG. ISO 40	3701	15	4417
MAG. ISO 45	3702	15	4418
MAG. ISO 50	3703	12	4419
MAG. HSK 50 - KM 50 - PSC 50	3750	15	4430
MAG. HSK 63 - KM 63 - PSC 63	3751	15	4431
MAG. HSK100 - KM100 - PSC 100	3875	12	5543
MAG. CM 4	3696	15	4400
MAG. CM 5	3702	15	4418
MAG. Ø 32 - VDI 30	3705	15	5531
MAG. Ø 40 - VDI 40	3706	15	5532
MAG. Ø 50 - VDI 50	5557	12	5533

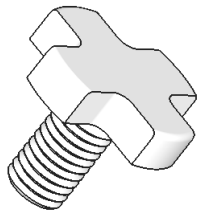




TIPO	Articolo	Spessori - Thickness
AD - D.16	<b>4084</b>	0,03 - 0,04 - 0,05 - 0,06 0,1 - 0,2 - 0,3 - 0,4 - 0,5 - 0,6 1,0 - 2,0 - 3,0 - 4,0 - 5,0 - 6,0 10,0 - 20,0 - 30,0
AD - D.22	<b>4085</b>	0,03 - 0,04 - 0,05 - 0,06 0,1 - 0,2 - 0,3 - 0,4 - 0,5 - 0,6 1,0 - 2,0 - 3,0 - 4,0 - 5,0 - 6,0 10,0 - 20,0 - 30,0 ————— 60,0 100,0
AD - D.27	<b>4086</b>	0,03 - 0,04 - 0,05 - 0,06 0,1 - 0,2 - 0,3 - 0,4 - 0,5 - 0,6 1,0 - 2,0 - 3,0 - 4,0 - 5,0 - 6,0 10,0 - 20,0 - 30,0 ————— 60,0 100,0
AD - D.32	<b>4087</b>	0,03 - 0,04 - 0,05 - 0,06 0,1 - 0,2 - 0,3 - 0,4 - 0,5 - 0,6 1,0 - 2,0 - 3,0 - 4,0 - 5,0 - 6,0 10,0 - 20,0 - 30,0 ————— 60,0 100,0
AD - D.40	<b>4088</b>	0,03 - 0,04 - 0,05 - 0,06 0,1 - 0,2 - 0,3 - 0,4 - 0,5 - 0,6 1,0 - 2,0 - 3,0 - 4,0 - 5,0 - 6,0 10,0 - 20,0 - 30,0 ————— 60,0 100,0
AD - D.50	<b>4089</b>	0,05 - 0,06 0,1 - 0,2 - 0,3 - 0,4 - 0,5 - 0,6 1,0 - 2,0 - 3,0 - 4,0 - 5,0 - 6,0 10,0 - 20,0 - 30,0 ————— 60,0 100,0

# VTC

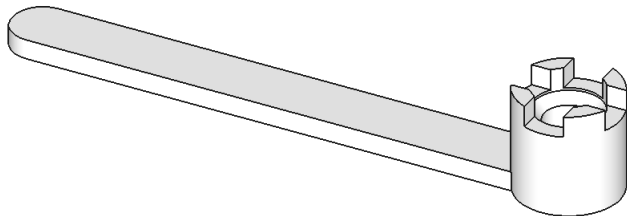
## VITI DI FISSAGGIO FRESA CON TESTA A CROCE MILL LOCKING CROSS HEAD SCREWS



TIPO	Art.	
VTC M 8/D. 16	<b>4985</b>	4562
VTC M 10/D. 22	<b>4986</b>	4563
VTC M 12/D. 27	<b>4987</b>	4564
VTC M 16/D. 32	<b>4988</b>	4565
VTC M 20/D. 40	<b>4989</b>	4566
VTC M 24/D. 50	<b>4990</b>	4567

# CH-VTC

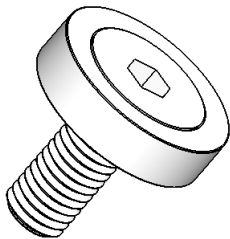
## CHIAVI PER VITI TESTA A CROCE WRENCHES FOR CROSS HEAD SCREWS



TIPO	Art.	
CH 16 VTC	<b>4562</b>	4985
CH 22 VTC	<b>4563</b>	4986
CH 27 VTC	<b>4564</b>	4987
CH 32 VTC	<b>4565</b>	4988
CH 40 VTC	<b>4566</b>	4989
CH 50 VTC	<b>4567</b>	4990

# VTT

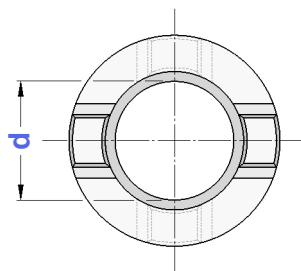
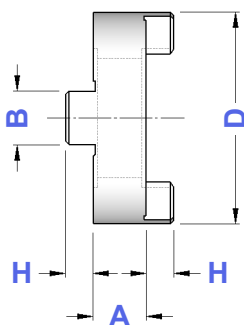
## VITI DI FISSAGGIO FRESA A TESTA TONDA MILL LOCKING ROUND HEAD SCREWS



TIPO	Art.	
VTT M 10/D. 22	<b>4980</b>	E. 6
VTT M 12/D. 27	<b>4981</b>	E. 8
VTT M 16/D. 32	<b>4982</b>	E. 10
VTT M 20/D. 40	<b>4983</b>	E. 12

# AT

## GIUNTI DI TRASCINAMENTO PER PORTAFRESA COMBINATI CLUTCH DRIVE RINGS FOR DIN 6358 SHELL END MILL HOLDERS



TIPO	Art.	D	H	A	B
AT - d. 16	<b>4090</b>	32	5,0	10	8
AT - d. 22	<b>4091</b>	40	5,6	12	10
AT - d. 27	<b>4092</b>	48	6,3	12	12
AT - d. 32	<b>4093</b>	58	7,0	14	14
AT - d. 40	<b>4094</b>	70	8,0	14	16
AT - d. 50	<b>4095</b>	90	9,0	16	18

# TPF

## TASSELLI PER PORTAFRESE FISSI DOWELS FOR FACE MILL HOLDERS

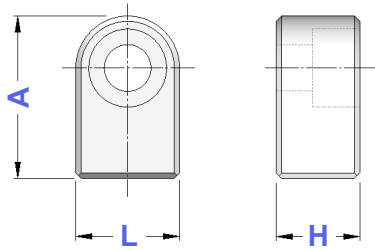


Figura 1

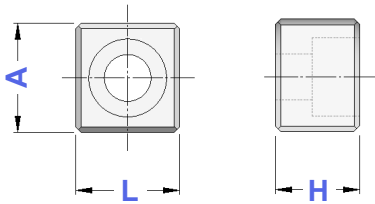
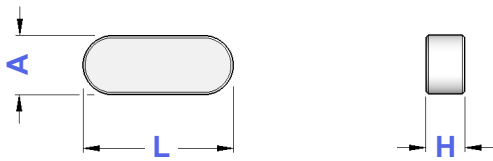


Figura 2

TIPO	Art.	H	L	A	Fig.	
TPF - D. 13	7433	6,5	8,0	13,0	1	0201
TPF - D. 16	7434	7,0	8,0	13,0	1	0201
	7421	10,5	8,0	13,0	1	0255
TPF - D. 22	7435	8,0	10,0	15,6	1	0203
	7427	11,6	10,0	15,6	1	0256
TPF - D. 27	7436	9,0	12,0	18,3	1	0205
	7428	13,3	12,0	18,3	1	7414
TPF - D. 32	7437	11,0	14,0	21,0	1	0482
	7439	15,0	14,0	21,0	1	0099
	7429	20,5	14,0	21,0	1	0099
TPF - D. 40	7438	13,0	16,0	24,0	1	0207
	0210	16,0	15,9	15,5	2	0207
TPF - D. 60	7430	20,5	16,0	24,0	1	0099
	0211	25,0	25,4	28,0	2	0407

# CHIAVETTE

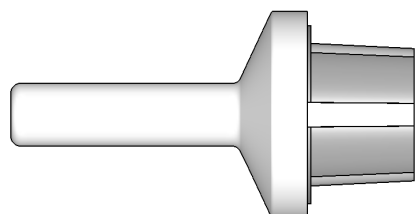
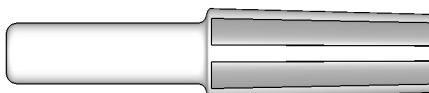
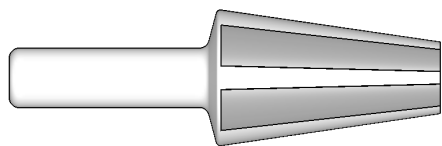
## CHIAVETTE KEYS



Art.	A	H	L
0101	3,7	2	9,66
0103	3	4	10
0041	4	4	12
0115	4	4	20
0147	4	4	22
0258	5	4	18
0107	5	4	20
0044	6	6	15
0108	6	6	20
0116	6	6	25
0148	6	6	32
0045	7	7	16
0122	7	7	25
0149	7	7	50
0047	8	7	16
0111	8	7	25
0125	8	7	28
0150	8	7	50
0114	10	8	30
0133	10	8	32
0151	10	8	50
0137	12	8	36
0152	12	8	50

# TP

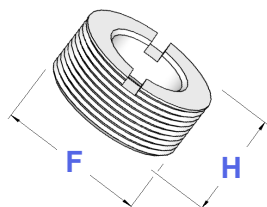
## TAMPONI PULITORI TAPER CLEANER



TIPO	Art.
TP - ISO 30	<b>4407</b>
TP - ISO 40	<b>4408</b>
TP - ISO 45	<b>4409</b>
TP - ISO 50	<b>4410</b>
TP - CM. 1	<b>4411</b>
TP - CM. 2	<b>4412</b>
TP - CM. 3	<b>4413</b>
TP - CM. 4	<b>4414</b>
TP - CM. 5	<b>4415</b>
TP - CM. 6	<b>5065</b>
TP - HSK 32 A/C/E	<b>5205</b>
TP - HSK 40 A/C/E	<b>5206</b>
TP - HSK 50 A/C/E	<b>5207</b>
TP - HSK 63 A/C/E	<b>5208</b>
TP - HSK 80 A/C/E	<b>5209</b>
TP - HSK100 A/C/E	<b>5210</b>

# GS-CM

## GHIERE SINISTRE PER RIDUZIONI A CONO MORSE LEFT THREADED NUTS FOR MORSE TAPER ADAPTERS

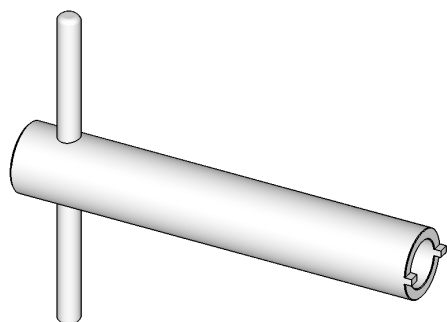


TIPO	Art.	F	H	
GS - CM 1	<b>7420</b>	M 12 x 1 SX	6,5	4568
GS - CM 2	<b>7422</b>	M 15 x 1,5 SX	6,0	4569
GS - CM 3	<b>7423</b>	M 20 x 1,5 SX	6,0	4570
GS - CM 4	<b>7424</b>	M 24 x 1,5 SX	8,5	4571
GS - CM 5	<b>7425</b>	M 36 x 2 SX	11,0	4572



# CH-CM

## CHIAVI PER RIDUZIONI A CONO MORSE WRENCHES FOR MORSE TAPER ADAPTERS

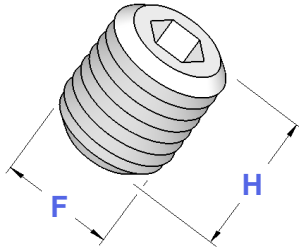


TIPO	Art.	
CH - CM 1	<b>4568</b>	7420
CH - CM 2	<b>4569</b>	7422
CH - CM 3	<b>4570</b>	7423
CH - CM 4	<b>4571</b>	7424
CH - CM 5	<b>4572</b>	7425



# G-WE

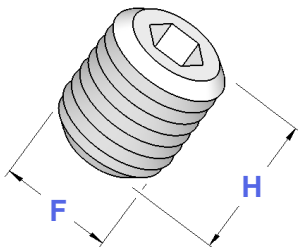
## GRANI DI FISSAGGIO PER MANDRINI WELDON WELDON END MILL SCREWS



TIPO	Art.	F x H	Passo
G - WE 6	4970	M 6 x 10	1
G - WE 8	4971	M 8 x 10	1,25
G - WE 10	4972	M 10 x 12	1,5
G - WE 12	4973	M 12 x 16	1,75
G - WE 14	4973	M 12 x 16	1,75
G - WE 16	4974	M 14 x 16	2
G - WE 18	4974	M 14 x 16	2
G - WE 20	4975	M 16 x 16	2
G - WE 25	4976	M 18 x 2 x 20	2
G - WE 32	4977	M 20 x 2 x 20	2
G - WE 40	4977	M 20 x 2 x 20	2
G - WE 50	4978	M 24 x 2 x 20	2

# GRANI

## GRANI DI REGOLAZIONE E DI FISSAGGIO DIN 913 - DIN 916 SETTING AND LOCKING SCREWS IN ACCORDING WITH DIN 913 - DIN 916



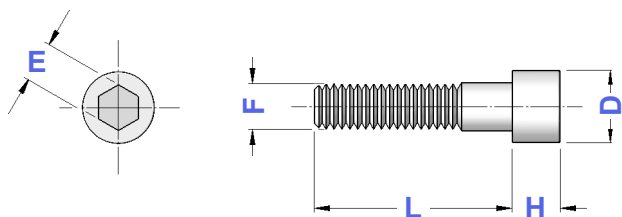
Art.	F x H	Passo
0011	M 4 x 4	0,7
0380	M 4 x 8	0,7
0173	M 4 x 14	0,7
0017	M 5 x 4	0,8
0019	M 5 x 5	0,8
0365	M 5 x 6	0,8
0366	M 5 x 10	0,8
0285	M 5 x 30	0,8
0388	M 5 x 40	0,8
0367	M 6 x 4	1
0368	M 6 x 5	1
0020	M 6 x 6	1
0370	M 6 x 8	1
4970	M 6 x 10	1
0371	M 6 x 12	1
0181	M 6 x 14	1
0208	M 6 x 16	1
0248	M 6 x 20	1
0253	M 6 x 40	1
0372	M 8 x 6	1,25
0021	M 8 x 8	1,25
4971	M 8 x 10	1,25
0375	M 8 x 12	1,25
0382	M 8 x 16	1,25
0183	M 8 x 20	1,25
0249	M 8 x 25	1,25
0284	M 8 x 40	1,25
0223	M 10 x 1 x 8	1
0409	M 10 x 1 x 10	1
0403	M 10 x 1 x 12	1
0385	M 10 x 8	1,5

Art.	F x H	Passo
0060	M 10 x 10	1,5
4972	M 10 x 12	1,5
0376	M 10 x 14	1,5
0377	M 10 x 16	1,5
0186	M 10 x 20	1,5
0250	M 10 x 25	1,5
0417	M 12 x 1 x 12	1
0200	M 12 x 10	1,75
0260	M 12 x 12	1,75
0390	M 12 x 14	1,75
4973	M 12 x 16	1,75
0277	M 12 x 20	1,75
0257	M 12 x 25	1,75
0188	M 12 x 30	1,75
0074	M 14 x 1 x 6	1
0401	M 14 x 1,5 x 16	1,5
0082	M 14 x 10	2
0261	M 14 x 12	2
0068	M 14 x 14	2
4974	M 14 x 16	2
0493	M 16 x 1 x 12	1
0420	M 16 x 1 x 16	1
0404	M 16 x 1,5 x 12	1,5
0073	M 16 x 10	2
0070	M 16 x 12	2
0400	M 16 x 14	2
4975	M 16 x 16	2
0076	M 18 x 2 x 12	2
0075	M 18 x 2 x 17	2
4976	M 18 x 2 x 20	2
0259	M 20 x 2 x 17	2
4977	M 20 x 2 x 20	2
4978	M 24 x 2 x 20	2

segue M10 ➡

# VITI

# VITI SCREWS



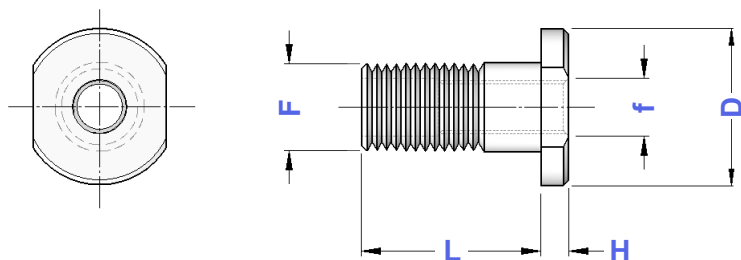
Art.	F	L	D	H	E	Passo
0201	M 3	8	5,5	3	2,5	0,5
0255	M 3	10	5,5	3	2,5	0,5
0203	M 4	10	7,0	4	3	0,7
0256	M 4	12	7,0	4	3	0,7
0205	M 5	12	8,5	5	4	0,8
7414	M 5	18	8,5	5	4	0,8
0484	M 6	10	10,0	6	5	1
0482	M 6	12	10,0	6	5	1
0206	M 6	14	10,0	6	5	1
0207	M 6	18	10,0	6	5	1
7447	M 6	20	8,5	4	4	1
0099	M 6	20	10,0	6	5	1
7415	M 6	25	10,0	6	5	1
0031	M 6	30	10,0	6	5	1
7400	M 6	35	10,0	6	5	1
7418	M 6	50	10,0	6	5	1
0035	M 6	55	10,0	6	5	1

segue ➡

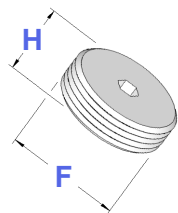
Art.	F	L	D	H	E	Passo
0297	M 8	12	13,0	8	6	1,25
0491	M 8	16	13,0	8	6	1,25
0023	M 8	20	13,0	8	6	1,25
0586	M 8	30	10,0	8	6	1,25
0533	M 8	30	13,0	8	6	1,25
7412	M10	20	16,0	10	8	1,5
7448	M10	30	13,0	10	8	1,5
0120	M10	30	16,0	10	8	1,5
7413	M10	35	16,0	10	8	1,5
7401	M10	45	13,5	10	8	1,5
7405	M10	45	16,0	10	8	1,5
0056	M10	50	16,0	10	8	1,5
0038	M10	70	16,0	10	8	1,5
0407	M12	25	18,0	12	10	1,75
7410	M12	30	18,0	12	10	1,75
7402	M12	35	17,0	12	8	1,75
7403	M12	35	18,0	12	10	1,75
7416	M12	45	18,0	12	10	1,75
0177	M12	50	18,0	12	10	1,75
7455	M12	55	17,0	12	10	1,75
7406	M12	55	18,0	12	10	1,75
0040	M12	70	18,0	12	10	1,75
0055	M12	85	18,0	12	10	1,75
7404	M16	40	20,0	16	10	2
7407	M16	40	21,5	16	14	2
7450	M16	40	24,0	16	14	2
7411	M16	45	21,5	9	12	2
7409	M16	60	20,5	16	14	2
0179	M16	60	21,5	9	12	2
7451	M16	60	24,0	16	14	2
0042	M16	80	20,5	16	14	2
7408	M20	55	30,0	20	17	2,5
7417	M24	60	36,0	13	17	3
0254	M24	90	36,0	13	17	3

# RIDUTTORI

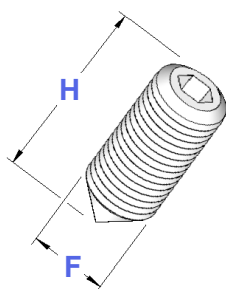
# RIDUTTORI REDUCTIONS



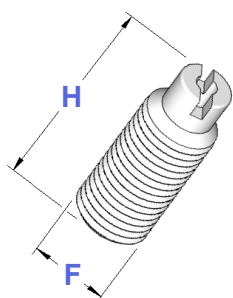
Art.	F	f	L	H	D
0276	M10	M 6	19	3	14
0130	M12	M 6	25	3	19
0129	M16	M10	27	3	25
0131	M20	M12	37	6	35



Art.	F x H	Passo
0190	M18 x1,5 x 8	1,5
0191	M22 x1,5 x 8	1,5
0195	M27 x1,5 x 8	1,5

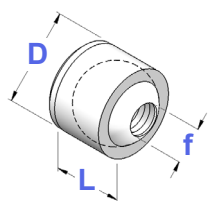


Art.	F x H	Passo
0510	M 4 x 4	0,7
0015	M 4 x14	0,7
0513	M 5 x 5	0,8
0529	M 5 x 6	0,8
0016	M 5 x10	0,8
0036	M 5 x16	0,8
0531	M 6 x 6	1
0557	M 6 x10	1
0037	M 8 x 8	1,25



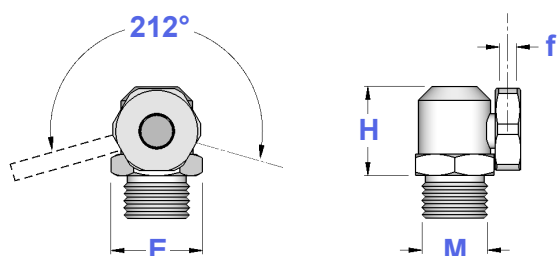
Art.	F x H	Passo
0233	M 5 x16	0,8
0235	M 6 x16	1
0238	M 8 x20	1,25
0240	M10 x25	1,5
0245	M12 x30	1,75
0212	M20 x 20	2,5
0247	M20 x 30	2,5

**UGELLI A SFERA**  
SPHERE COOLANT NOZZLES



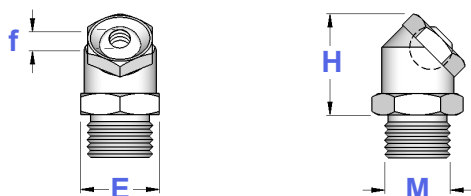
Art.	D	L	f
9200	6	5	M 2,5
9201	8	6	M 4
9202	10	7	M 5
9203	12	8	M 5
9204	12	8	M 6
9205	14	9	M 8
9206	16	10	M 10x1

**UGELLI PER ALTA PRESSIONE ORIENTABILI**  
ORIENTABLE COOLANT NOZZLES FOR HIGH PRESSURE



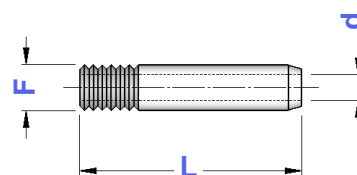
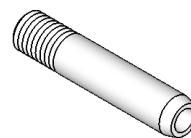
Art.	f	E	M	H
9240	M 4	12	1/8	17
9241	M 5	14	1/8	18
9242	M 6	17	1/4	21

**UGELLI A SFERA PER ALTA PRESSIONE**  
SPHERE COOLANT NOZZLES FOR HIGH PRESSURE



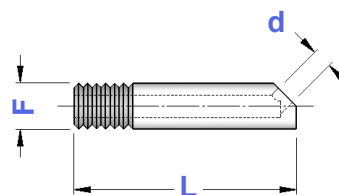
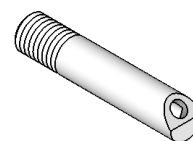
Art.	f	E	M	H
9235	M 3	16	1/8	19
9236	M 5	18	1/4	21
9237	M 6	20	3/8	23
9238	M 8	23	3/8	27

**PROLUNGHE PER UGELLI**  
EXTENSIONS FOR COOLANT NOZZLES



Art.	F	d	L
9210	M 3	1,5	25
9211	M 4	1	30
9212	M 4	2	30
9213	M 5	2	30
9214	M 5	3	40
9215	M 6	2	35
9216	M 6	3	50
9217	M 6	4	50
9218	M 8	2	40
9219	M 8	3	40
9220	M 8	4	40
9221	M 8	5	50
9222	M10x1	2	40
9223	M10x1	4	40
9224	M10x1	6	50
9225	M10x1	8	50

**PROLUNGHE PER UGELLI A 45°**  
45° EXTENSIONS FOR COOLANT NOZZLES



Art.	F	d	L
9230	M 5	2,5	23
9231	M 6	3	30
9232	M 8	4	35