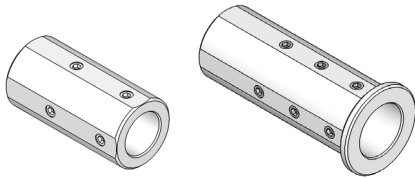


INDICE DELLE BUSSOLE DI RIDUZIONE

INDEX OF REDUCTION SLEEVES

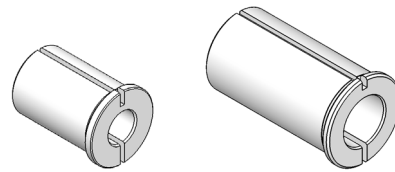
UNIVERSALI UNIVERSAL



Programma
completo
da
pagina

217

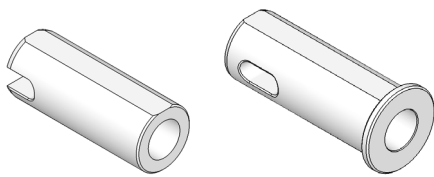
TIPO RZ RZ TYPE



Programma
completo
a
pagina

220

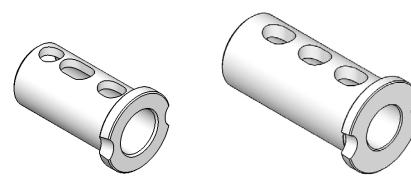
A CONO MORSE MORSE TAPER



Programma
completo
da
pagina

222

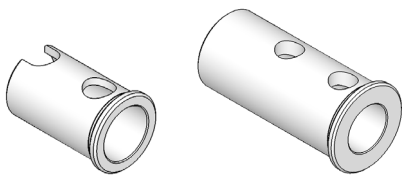
RIDUZIONI PER PORTABARENI REDUCTIONS FOR BORING BAR HOLDERS



Programma
completo
da
pagina

224

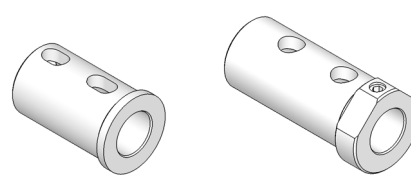
TIPO BIGLIA etc. BIGLIA TYPE etc.



Programma
completo
da
pagina

226

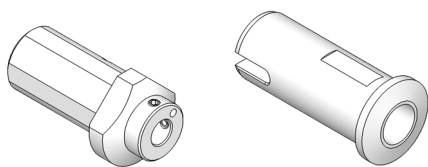
TIPO DAEWOO etc. DAEWOO TYPE etc.



Programma
completo
da
pagina

228

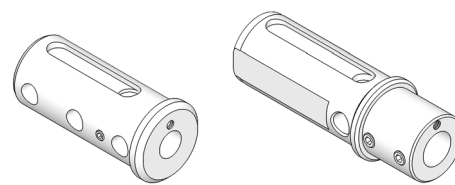
TIPO MAZAK etc. MAZAK TYPE etc.



Programma
completo
da
pagina

230

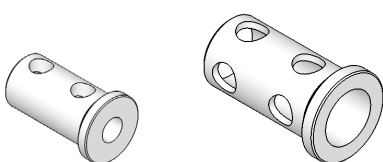
TIPO MORI SEIKI etc. MORI SEIKI TYPE etc.



Programma
completo
da
pagina

232

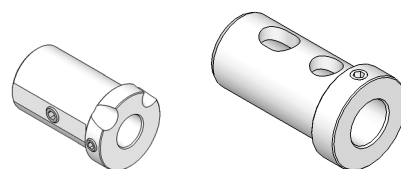
TIPO NAKAMURA TOME etc. NAKAMURA TOME TYPE etc.



Programma
completo
a
pagina

229

TIPO OKUMA etc. OKUMA TYPE etc.



Programma
completo
da
pagina

236

E 2.1
E 2.2

BUSSOLE DI RIDUZIONE UNIVERSALI SENZA BATTUTA
UNIVERSAL REDUCTION SLEEVES

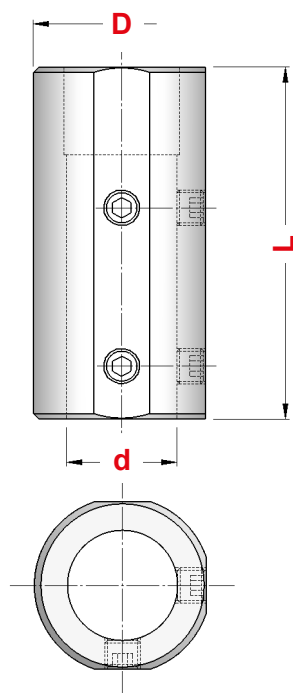
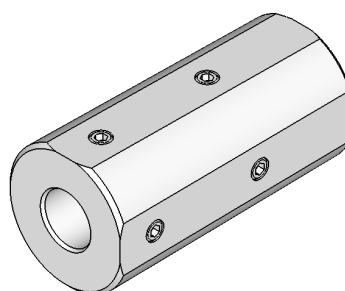


Figura 1

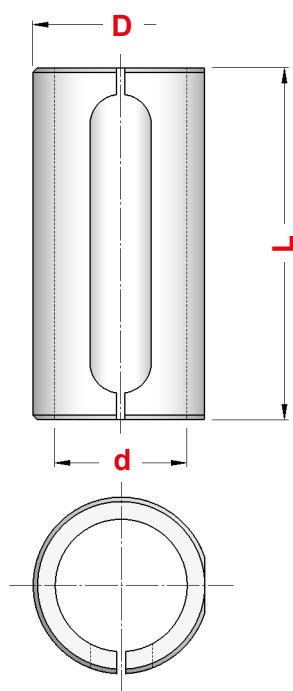


Figura 2



TIPO	Art.	D	d	L	Fig.	
E 2.1 - 20 x 6	2770	20	6	60	1	0365
E 2.1 - 20 x 8	2778	20	8	60	1	0368
E 2.1 - 20 x 10	2779	20	10	60	1	0367
E 2.1 - 20 x 12	2780	20	12	60	1	0367
E 2.1 - 25 x 6	2837	25	6	60	1	0365
E 2.1 - 25 x 8	4300	25	8	60	1	0020
E 2.1 - 25 x 10	4301	25	10	60	1	0020
E 2.1 - 25 x 12	4302	25	12	60	1	0368
E 2.1 - 25 x 14	2771	25	14	60	1	0367
E 2.2 - 25 x 16	4318	25	16	60	2	—
E 2.1 - 32 x 6	2838	32	6	70	1	0366
E 2.1 - 32 x 8	4303	32	8	70	1	4970
E 2.1 - 32 x 10	4304	32	10	70	1	4970
E 2.1 - 32 x 12	4305	32	12	70	1	0370
E 2.1 - 32 x 14	2839	32	14	70	1	0020
E 2.1 - 32 x 16	4306	32	16	70	1	0020
E 2.1 - 32 x 18	2841	32	18	70	1	0020
E 2.1 - 32 x 20	4307	32	20	70	1	0372
E 2.2 - 32 x 25	4319	32	25	70	2	—
E 2.1 - 40 x 6	7059	40	6	80	1	0366
E 2.1 - 40 x 8	4308	40	8	80	1	0181
E 2.1 - 40 x 10	4309	40	10	80	1	0371
E 2.1 - 40 x 12	4310	40	12	80	1	0371
E 2.1 - 40 x 14	2845	40	14	80	1	0371
E 2.1 - 40 x 16	4311	40	16	80	1	4970
E 2.1 - 40 x 18	2847	40	18	80	1	4970
E 2.1 - 40 x 20	4312	40	20	80	1	0021
E 2.1 - 40 x 25	4313	40	25	80	1	0372
E 2.2 - 40 x 32	4320	40	32	80	2	—
E 2.1 - 50 x 12	7061	50	12	90	1	0181
E 2.1 - 50 x 14	7062	50	14	90	1	0181
E 2.1 - 50 x 16	4314	50	16	90	1	0375
E 2.1 - 50 x 18	2792	50	18	90	1	0375
E 2.1 - 50 x 20	4315	50	20	90	1	0375
E 2.1 - 50 x 25	4316	50	25	90	1	4971
E 2.1 - 50 x 32	4317	50	32	90	1	0021
E 2.2 - 50 x 40	4321	50	40	90	2	—
E 2.1 - 60 x 16	8886	60	16	160	1	0183
E 2.1 - 60 x 20	8887	60	20	160	1	0183
E 2.1 - 60 x 25	8888	60	25	160	1	0377
E 2.1 - 60 x 32	8889	60	32	160	1	4972
E 2.1 - 60 x 40	8890	60	40	160	1	0385

EG.1
EG.2

BUSSOLE DI RIDUZIONE UNIVERSALI CON BATTUTA
HEADED REDUCTION SLEEVES

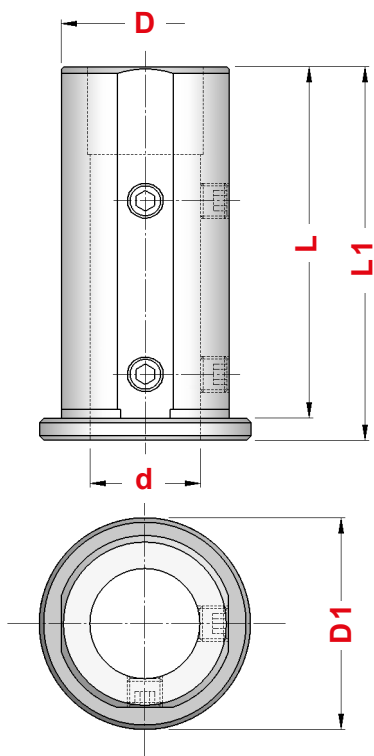
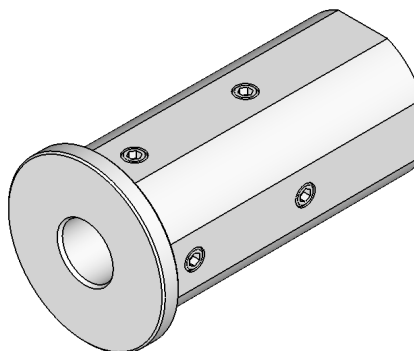


Figura 1

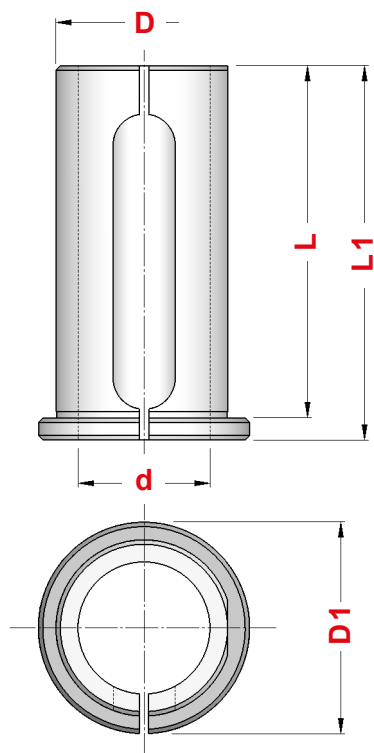



Figura 2

TIPO	Art.	D	d	L	L1	D1	Fig.	
EG.1 - 20 x 6	5964	20	6	50	55	28	1	0365
EG.1 - 20 x 8	5965	20	8	50	55	28	1	0368
EG.1 - 20 x 10	5966	20	10	50	55	28	1	0367
EG.1 - 20 x 12	5967	20	12	50	55	28	1	0367
EG.2 - 20 x 14	5994	20	14	50	55	28	2	—
EG.1 - 25 x 6	5968	25	6	60	65	33	1	0365
EG.1 - 25 x 8	5969	25	8	60	65	33	1	0020
EG.1 - 25 x 10	5970	25	10	60	65	33	1	0020
EG.1 - 25 x 12	5971	25	12	60	65	33	1	0368
EG.1 - 25 x 14	5972	25	14	60	65	33	1	0367
EG.2 - 25 x 16	5995	25	16	60	65	33	2	—
EG.2 - 25 x 18	5996	25	18	60	65	33	2	—
EG.1 - 32 x 6	5973	32	6	70	75	40	1	0366
EG.1 - 32 x 8	5974	32	8	70	75	40	1	4970
EG.1 - 32 x 10	5975	32	10	70	75	40	1	4970
EG.1 - 32 x 12	5976	32	12	70	75	40	1	0370
EG.1 - 32 x 14	5977	32	14	70	75	40	1	0020
EG.1 - 32 x 16	5978	32	16	70	75	40	1	0020
EG.1 - 32 x 18	5979	32	18	70	75	40	1	0020
EG.1 - 32 x 20	5980	32	20	70	75	40	1	0372
EG.2 - 32 x 25	5997	32	25	70	75	40	2	—
EG.1 - 40 x 6	5960	40	6	80	85	48	1	0366
EG.1 - 40 x 8	5981	40	8	80	85	48	1	0181
EG.1 - 40 x 10	5982	40	10	80	85	48	1	0371
EG.1 - 40 x 12	5983	40	12	80	85	48	1	0371
EG.1 - 40 x 14	5984	40	14	80	85	48	1	0371
EG.1 - 40 x 16	5985	40	16	80	85	48	1	4970
EG.1 - 40 x 18	5986	40	18	80	85	48	1	4970
EG.1 - 40 x 20	5987	40	20	80	85	48	1	0021
EG.1 - 40 x 25	5988	40	25	80	85	48	1	0372
EG.2 - 40 x 32	5998	40	32	80	85	48	2	—
EG.1 - 50 x 16	5989	50	16	90	95	58	1	0375
EG.1 - 50 x 18	5990	50	18	90	95	58	1	0375
EG.1 - 50 x 20	5991	50	20	90	95	58	1	0375
EG.1 - 50 x 25	5992	50	25	90	95	58	1	4971
EG.1 - 50 x 32	5993	50	32	90	95	58	1	0021
EG.2 - 50 x 40	5999	50	40	90	95	58	2	—

**EG.3
EG.4**

BUSSOLE DI RIDUZIONE UNIVERSALI LUNGHE CON BATTUTA
EXTENDED HEADED REDUCTION SLEEVES

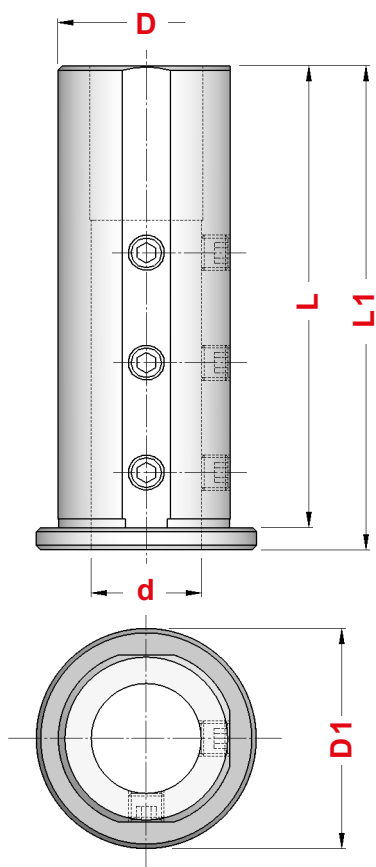


Figura 1

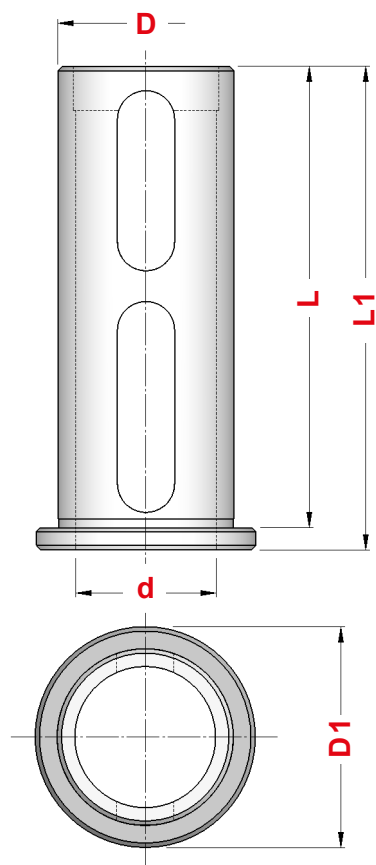
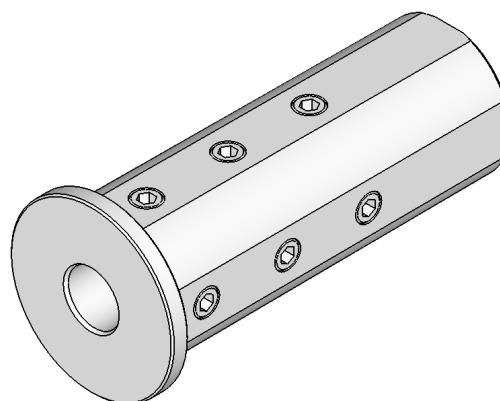

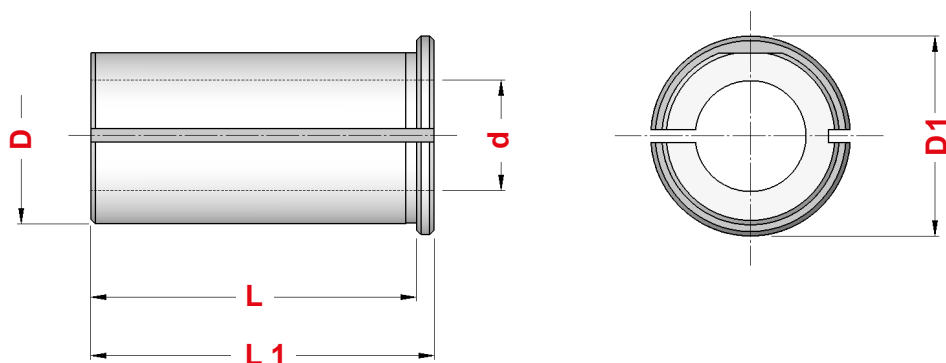


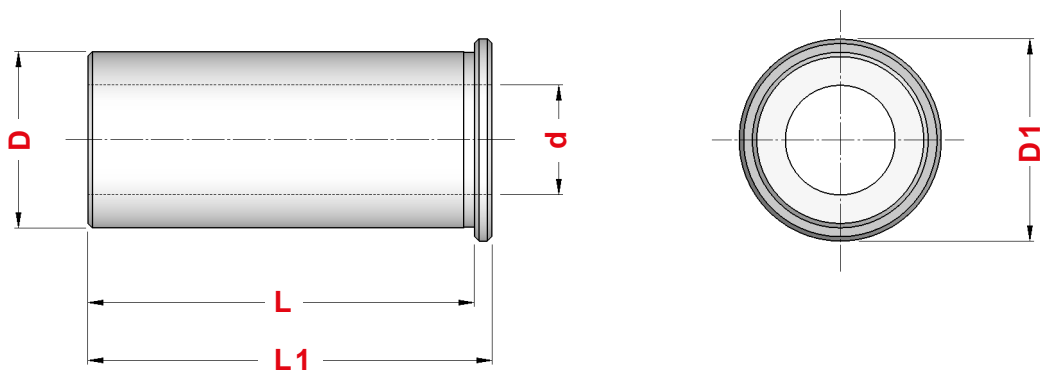
Figura 2



TIPO	Art.	D	d	L	L1	D1	Fig.	
EG.3-32 x 6	5315	32	6	85	90	40	1	0366
EG.3-32 x 8	5316	32	8	85	90	40	1	4970
EG.3-32 x 10	5317	32	10	85	90	40	1	0370
EG.3-32 x 12	5318	32	12	85	90	40	1	0370
EG.3-32 x 14	7042	32	14	85	90	40	1	0370
EG.3-32 x 16	5319	32	16	85	90	40	1	0020
EG.3-32 x 18	7043	32	18	85	90	40	1	0020
EG.3-32 x 20	5320	32	20	85	90	40	1	0367
EG.4-32 x 25	5333	32	25	85	90	40	2	—
EG.3-40 x 6	5321	40	6	105	110	50	1	0366
EG.3-40 x 8	5322	40	8	105	110	50	1	0181
EG.3-40 x 10	5323	40	10	105	110	50	1	0371
EG.3-40 x 12	5324	40	12	105	110	50	1	0371
EG.3-40 x 14	5918	40	14	105	110	50	1	0371
EG.3-40 x 16	5325	40	16	105	110	50	1	4971
EG.3-40 x 18	5919	40	18	105	110	50	1	4971
EG.3-40 x 20	5326	40	20	105	110	50	1	0021
EG.3-40 x 25	5327	40	25	105	110	50	1	0372
EG.4-40 x 32	5334	40	32	105	110	50	2	—
EG.3-50 x 12	5328	50	12	125	130	60	1	0382
EG.3-50 x 14	7044	50	14	125	130	60	1	0382
EG.3-50 x 16	5329	50	16	125	130	60	1	0375
EG.3-50 x 18	7045	50	18	125	130	60	1	0375
EG.3-50 x 20	5330	50	20	125	130	60	1	0375
EG.3-50 x 25	5331	50	25	125	130	60	1	4971
EG.3-50 x 32	5332	50	32	125	130	60	1	0021
EG.4-50 x 40	5335	50	40	125	130	60	2	—
EG.3-60 x 20	8840	60	20	135	140	70	1	0186
EG.3-60 x 25	8841	60	25	135	140	70	1	0377
EG.3-60 x 32	8842	60	32	135	140	70	1	4972
EG.3-60 x 40	8843	60	40	135	140	70	1	0385
EG.4-60 x 50	8844	60	50	135	140	70	2	—
EG.3-80 x 25	8845	80	25	145	150	90	1	4973
EG.3-80 x 32	8846	80	32	145	150	90	1	4973
EG.3-80 x 40	8847	80	40	145	150	90	1	4973
EG.3-80 x 50	8848	80	50	145	150	90	1	4973
EG.4-80 x 60	8849	80	60	145	150	90	2	—



TIPO	Art.	D	d	L	L1	D1
RZ - 20 x 8	5920	20	8	26	30	25
RZ - 20 x 10	5921	20	10	26	30	25
RZ - 20 x 12	5922	20	12	26	30	25
RZ - 20 x 14	5923	20	14	26	30	25
RZ - 20 x 16	5924	20	16	26	30	25
RZ - 25 x 8	5925	25	8	36	40	30
RZ - 25 x 10	5926	25	10	36	40	30
RZ - 25 x 12	5927	25	12	36	40	30
RZ - 25 x 14	5928	25	14	36	40	30
RZ - 25 x 16	5929	25	16	36	40	30
RZ - 25 x 18	5930	25	18	36	40	30
RZ - 25 x 20	5931	25	20	36	40	30
RZ - 32 x 8	5932	32	8	46	50	37
RZ - 32 x 10	5933	32	10	46	50	37
RZ - 32 x 12	5934	32	12	46	50	37
RZ - 32 x 14	5935	32	14	46	50	37
RZ - 32 x 16	5936	32	16	46	50	37
RZ - 32 x 18	5937	32	18	46	50	37
RZ - 32 x 20	5938	32	20	46	50	37
RZ - 32 x 25	5939	32	25	46	50	37
RZ - 40 x 10	5941	40	10	74	78	45
RZ - 40 x 12	5942	40	12	74	78	45
RZ - 40 x 14	5943	40	14	74	78	45
RZ - 40 x 16	5944	40	16	74	78	45
RZ - 40 x 18	5945	40	18	74	78	45
RZ - 40 x 20	5946	40	20	74	78	45
RZ - 40 x 25	5947	40	25	74	78	45
RZ - 40 x 32	5948	40	32	74	78	45
RZ - 50 x 20	5951	50	20	84	88	55
RZ - 50 x 25	5952	50	25	84	88	55
RZ - 50 x 32	5953	50	32	84	88	55
RZ - 50 x 40	5954	50	40	84	88	55
RZ - 60 x 25	5956	60	25	88	92	65
RZ - 60 x 32	5957	60	32	88	92	65
RZ - 60 x 40	5958	60	40	88	92	65
RZ - 60 x 50	5959	60	50	88	92	65



TIPO	Art.	D	d	L	L1	D1
E2.LAV - 25 x 8	1509	25	8	70	74	32
E2.LAV - 25 x 10	1511	25	10	70	74	32
E2.LAV - 25 x 12	1513	25	12	70	74	32
E2.LAV - 25 x 14	1516	25	14	70	74	32
E2.LAV - 25 x 16	1517	25	16	70	74	32
E2.LAV - 25 x 18	1518	25	18	70	74	32
E2.LAV - 25 x 20	1519	25	20	70	74	32
E2.LAV - 32 x 8	2283	32	8	88	92	36
E2.LAV - 32 x 10	2284	32	10	88	92	36
E2.LAV - 32 x 12	2286	32	12	88	92	36
E2.LAV - 32 x 14	2287	32	14	88	92	36
E2.LAV - 32 x 16	2289	32	16	88	92	36
E2.LAV - 32 x 18	2290	32	18	88	92	36
E2.LAV - 32 x 20	2291	32	20	88	92	36
E2.LAV - 32 x 25	2293	32	25	88	92	36
E2.LAV - 40 x 10	2439	40	10	88	92	46
E2.LAV - 40 x 12	2440	40	12	88	92	46
E2.LAV - 40 x 14	2441	40	14	88	92	46
E2.LAV - 40 x 16	2442	40	16	88	92	46
E2.LAV - 40 x 18	2445	40	18	88	92	46
E2.LAV - 40 x 20	2446	40	20	88	92	46
E2.LAV - 40 x 25	2460	40	25	88	92	46
E2.LAV - 40 x 32	2466	40	32	88	92	46

Figura 1

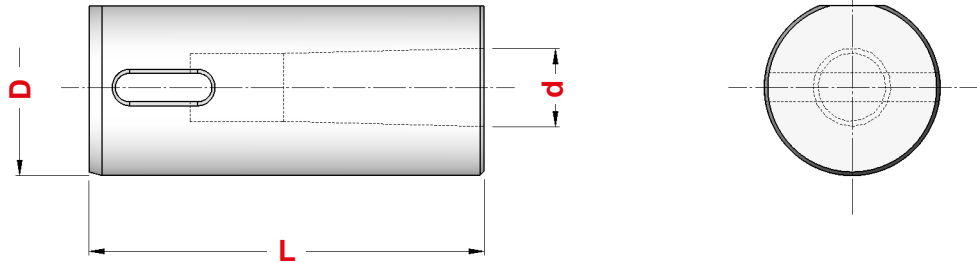
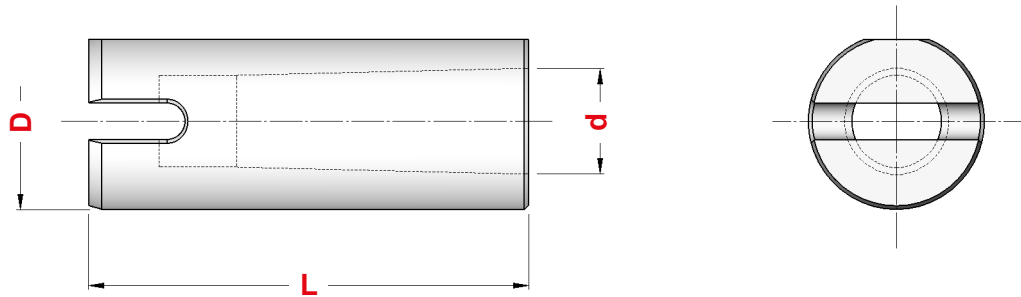


Figura 2



TIPO	Art.	D	CM	d	L	Fig.
E 2.3 - 20 x 1	5217	20	1	12,065	60	2
E 2.3 - 20 x 2	5218	20	2	17,780	90	1
E 2.3 - 25 x 1	5219	25	1	12,065	60	2
E 2.3 - 25 x 2	5220	25	2	17,780	90	1
E 2.3 - 32 x 1	5221	32	1	12,065	60	2
E 2.3 - 32 x 2	4322	32	2	17,780	90	1
E 2.3 - 32 x 3	4323	32	3	23,825	100	2
E 2.3 - 40 x 2	4324	40	2	17,780	90	1
E 2.3 - 40 x 3	4325	40	3	23,825	100	2
E 2.3 - 40 x 4	2857	40	4	31,267	120	2
E 2.3 - 50 x 2	4326	50	2	17,780	90	1
E 2.3 - 50 x 3	4327	50	3	23,825	100	2
E 2.3 - 50 x 4	4328	50	4	31,267	120	2
E 2.3 - 60 x 3	8891	60	3	23,825	160	1
E 2.3 - 60 x 4	8892	60	4	31,267	160	1
E 2.3 - 60 x 5	8893	60	5	44,399	160	2

Figura 1

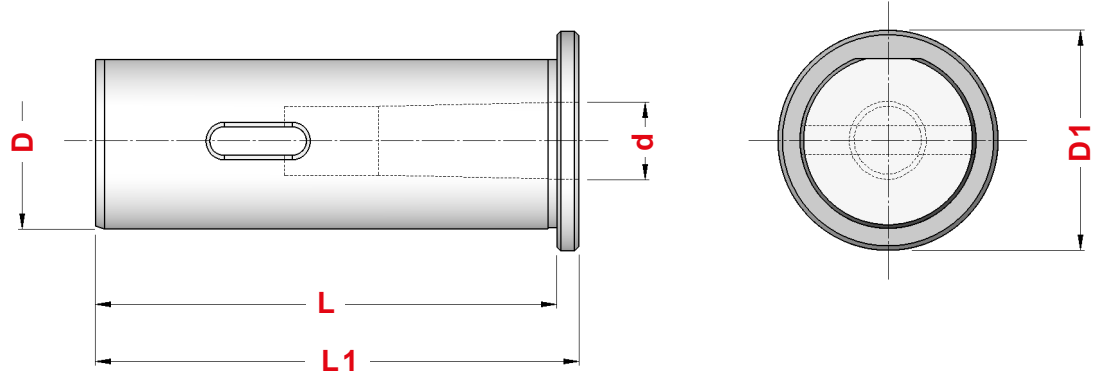
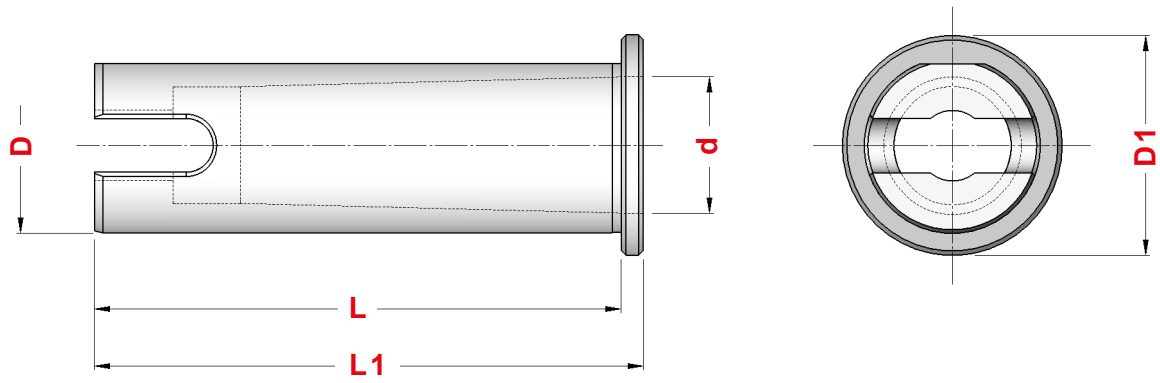
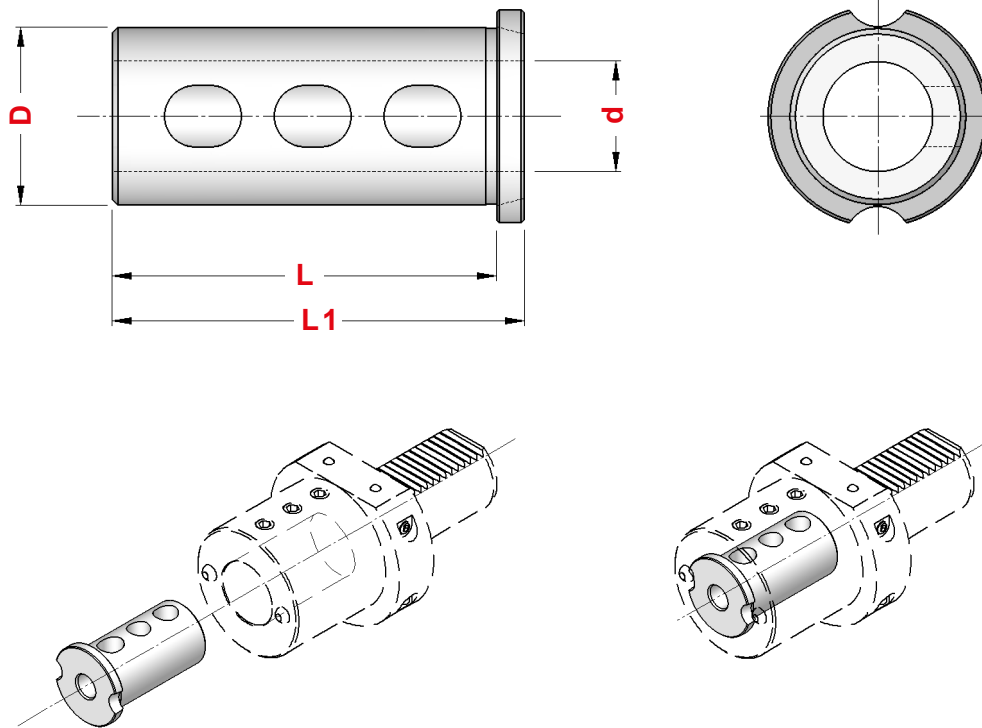


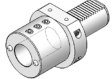
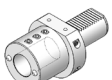
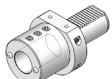
Figura 2



TIPO	Art.	D	CM	d	L	L1	D1	Fig.
E2.G6 - 20 x 1	1722	20	1	12,065	65	70	28	2
E2.G6 - 20 x 2	1723	20	2	17,780	70	75	28	2
E2.G6 - 25 x 1	1786	25	1	12,065	70	75	33	2
E2.G6 - 25 x 2	1787	25	2	17,780	70	75	33	2
E2.G6 - 25 x 3	1788	25	3	23,825	79	98	33	2
E2.G6 - 32 x 1	1376	32	1	12,065	85	90	40	1
E2.G6 - 32 x 2	1377	32	2	17,780	85	90	40	1
E2.G6 - 32 x 3	1378	32	3	23,825	95	100	40	2
E2.G6 - 40 x 2	3245	40	2	17,780	105	110	50	1
E2.G6 - 40 x 3	1232	40	3	23,825	105	110	50	1
E2.G6 - 40 x 4	5603	40	4	31,267	120	125	50	2
E2.G6 - 50 x 2	5961	50	2	17,780	125	130	63	1
E2.G6 - 50 x 3	5962	50	3	23,825	125	130	63	1
E2.G6 - 50 x 4	5963	50	4	31,267	125	130	63	1
E2.G6 - 60 x 3	8894	60	3	23,825	130	140	70	1
E2.G6 - 60 x 4	8895	60	4	31,267	130	140	70	1
E2.G6 - 60 x 5	8896	60	5	44,399	145	155	70	2

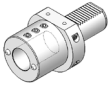
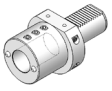
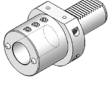


Bussole di riduzione per Portabareni tipo "E2" con attacco VDI 20 - VDI 25 - VDI 30 Headed reduction sleeves for Boring bar Holders "E2" type with shanks VDI 20 - VDI 25 - VDI 30

TIPO	Art.	D	d	L	L1	TIPO E2
E2 .R1 - 25 x 8	5436	25	8	47	52	 E2 - 20x25 E2 - 25x25 E2 - 30x25
E2 .R1 - 25 x 10	5437	25	10	47	52	
E2 .R1 - 25 x 12	5438	25	12	47	52	
E2 .R1 - 25 x 14	5439	25	14	47	52	
E2 .R1 - 25 x 16	5440	25	16	47	52	
E2 .R1 - 25 x 18	5441	25	18	47	52	
E2 .R1 - 25 x 20	5442	25	20	47	52	
E2 .R2 - 32 x 8	5457	32	8	57	62	 E2 - 25x32 E2 - 30x32
E2 .R2 - 32 x 10	5458	32	10	57	62	
E2 .R2 - 32 x 12	5459	32	12	57	62	
E2 .R2 - 32 x 14	5460	32	14	57	62	
E2 .R2 - 32 x 16	5461	32	16	57	62	
E2 .R2 - 32 x 18	5462	32	18	57	62	
E2 .R2 - 32 x 20	5463	32	20	57	62	
E2 .R2 - 32 x 25	5464	32	25	57	62	
E2 .R2 - 40 x 8	5473	40	8	57	62	 E2 - 30x40
E2 .R2 - 40 x 10	5474	40	10	57	62	
E2 .R2 - 40 x 12	5475	40	12	57	62	
E2 .R2 - 40 x 14	5476	40	14	57	62	
E2 .R2 - 40 x 16	5477	40	16	57	62	
E2 .R2 - 40 x 18	5478	40	18	57	62	
E2 .R2 - 40 x 20	5479	40	20	57	62	
E2 .R2 - 40 x 25	5480	40	25	57	62	
E2 .R2 - 40 x 32	5481	40	32	57	62	

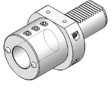
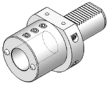
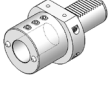
Bussole di riduzione per Portabareni tipo "E2" con attacco VDI 40

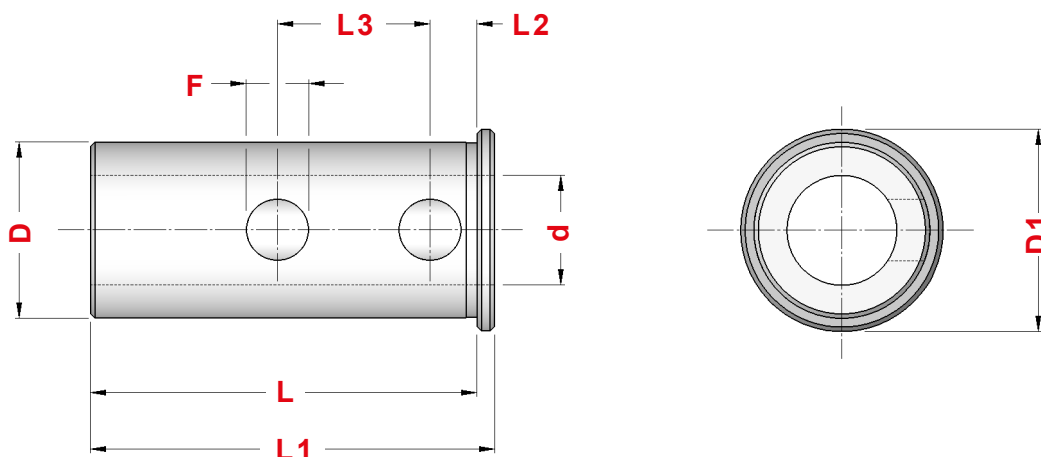
Headed reduction sleeves for Boring bar Holders "E2" type with shank VDI 40

TIPO	Art.	D	d	L	L1	TIPO E2
E2.R2 - 25 x 8	5443	25	8	57	62	 E2 - 40x25
E2.R2 - 25 x 10	5444	25	10	57	62	
E2.R2 - 25 x 12	5445	25	12	57	62	
E2.R2 - 25 x 14	5446	25	14	57	62	
E2.R2 - 25 x 16	5447	25	16	57	62	
E2.R2 - 25 x 18	5448	25	18	57	62	
E2.R2 - 25 x 20	5449	25	20	57	62	 E2 - 40x32
E2.R2 - 32 x 8	5457	32	8	57	62	
E2.R2 - 32 x 10	5458	32	10	57	62	
E2.R2 - 32 x 12	5459	32	12	57	62	
E2.R2 - 32 x 14	5460	32	14	57	62	
E2.R2 - 32 x 16	5461	32	16	57	62	
E2.R2 - 32 x 18	5462	32	18	57	62	 E2 - 40x40
E2.R2 - 32 x 20	5463	32	20	57	62	
E2.R2 - 32 x 25	5464	32	25	57	62	
E2.R3 - 40 x 8	5482	40	8	70	75	
E2.R3 - 40 x 10	5483	40	10	70	75	
E2.R3 - 40 x 12	5484	40	12	70	75	
E2.R3 - 40 x 14	5485	40	14	70	75	
E2.R3 - 40 x 16	5486	40	16	70	75	
E2.R3 - 40 x 18	5487	40	18	70	75	
E2.R3 - 40 x 20	5488	40	20	70	75	
E2.R3 - 40 x 25	5489	40	25	70	75	
E2.R3 - 40 x 32	5490	40	32	70	75	

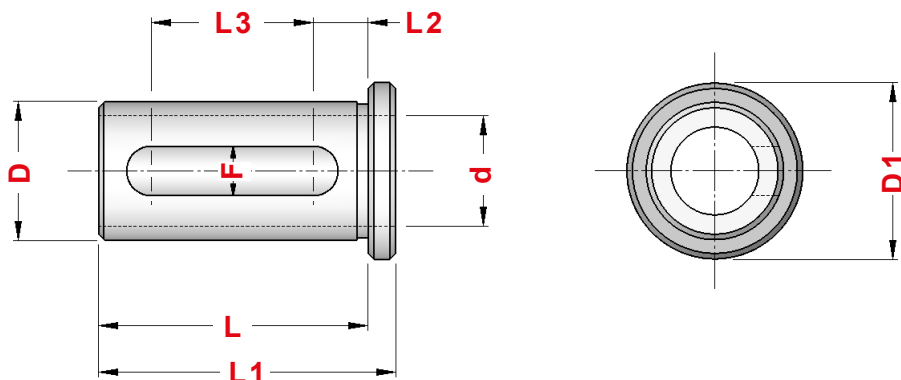
Bussole di riduzione per Portabareni tipo "E2" con attacco VDI 50 - VDI 60 - VDI 80

Headed reduction sleeves for Boring bar Holders "E2" type with shanks VDI 50 - VDI 60 - VDI 80

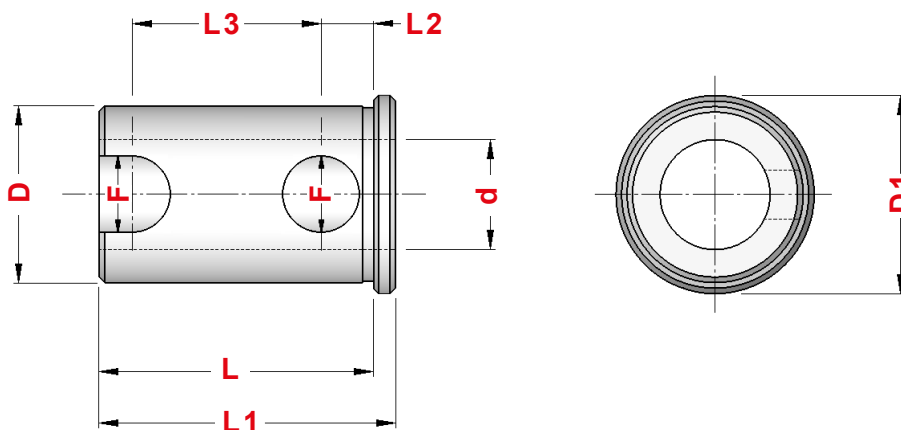
TIPO	Art.	D	d	L	L1	TIPO E2
E2.R3 - 25 x 8	5450	25	8	70	75	 E2 - 50x25 E2 - 60x25 E2 - 80x25
E2.R3 - 25 x 10	5451	25	10	70	75	
E2.R3 - 25 x 12	5452	25	12	70	75	
E2.R3 - 25 x 14	5453	25	14	70	75	
E2.R3 - 25 x 16	5454	25	16	70	75	
E2.R3 - 25 x 18	5455	25	18	70	75	
E2.R3 - 25 x 20	5456	25	20	70	75	 E2 - 50x32 E2 - 60x32 E2 - 80x32
E2.R3 - 32 x 8	5465	32	8	70	75	
E2.R3 - 32 x 10	5466	32	10	70	75	
E2.R3 - 32 x 12	5467	32	12	70	75	
E2.R3 - 32 x 14	5468	32	14	70	75	
E2.R3 - 32 x 16	5469	32	16	70	75	
E2.R3 - 32 x 18	5470	32	18	70	75	 E2 - 50x40 E2 - 60x40 E2 - 80x40
E2.R3 - 32 x 20	5471	32	20	70	75	
E2.R3 - 32 x 25	5472	32	25	70	75	
E2.R3 - 40 x 8	5482	40	8	70	75	
E2.R3 - 40 x 10	5483	40	10	70	75	
E2.R3 - 40 x 12	5484	40	12	70	75	
E2.R3 - 40 x 14	5485	40	14	70	75	
E2.R3 - 40 x 16	5486	40	16	70	75	
E2.R3 - 40 x 18	5487	40	18	70	75	
E2.R3 - 40 x 20	5488	40	20	70	75	
E2.R3 - 40 x 25	5489	40	25	70	75	
E2.R3 - 40 x 32	5490	40	32	70	75	



TIPO	Art.	D	d	L	L1	L2	L3	F	D1
BG.1 - 25 x 8	2823	25	8	70	74	7	28	9	32
BG.1 - 25 x 10	2824	25	10	70	74	7	28	9	32
BG.1 - 25 x 12	1064	25	12	70	74	7	28	9	32
BG.1 - 25 x 14	2722	25	14	70	74	7	28	9	32
BG.1 - 25 x 16	2198	25	16	70	74	7	28	9	32
BG.1 - 25 x 18	2723	25	18	70	74	7	28	9	32
BG.1 - 25 x 20	1212	25	20	70	74	7	28	9	32
BG.1 - 32 x 8	3229	32	8	88	92	9	35	14	36
BG.1 - 32 x 10	3230	32	10	88	92	9	35	14	36
BG.1 - 32 x 12	3231	32	12	88	92	9	35	14	36
BG.1 - 32 x 14	2726	32	14	88	92	9	35	14	36
BG.1 - 32 x 16	3232	32	16	88	92	9	35	14	36
BG.1 - 32 x 18	2737	32	18	88	92	9	35	14	36
BG.1 - 32 x 20	3233	32	20	88	92	9	35	14	36
BG.1 - 32 x 25	3234	32	25	88	92	9	35	14	36
BG.1 - 40 x 10	3240	40	10	88	92	9	35	14	46
BG.1 - 40 x 12	3239	40	12	88	92	9	35	14	46
BG.1 - 40 x 14	2757	40	14	88	92	9	35	14	46
BG.1 - 40 x 16	3238	40	16	88	92	9	35	14	46
BG.1 - 40 x 18	2762	40	18	88	92	9	35	14	46
BG.1 - 40 x 20	3235	40	20	88	92	9	35	14	46
BG.1 - 40 x 25	3236	40	25	88	92	9	35	14	46
BG.1 - 40 x 32	3237	40	32	88	92	9	35	14	46



TIPO	Art.	D	d	L	L1	L2	L3	F	D1
BG.2 - 25 x 8	0022	25	8	49	54	10	29,5	9	32
BG.2 - 25 x 10	0024	25	10	49	54	10	29,5	9	32
BG.2 - 25 x 12	0025	25	12	49	54	10	29,5	9	32
BG.2 - 25 x 14	0091	25	14	49	54	10	29,5	9	32
BG.2 - 25 x 16	0026	25	16	49	54	10	29,5	9	32
BG.2 - 25 x 18	0092	25	18	49	54	10	29,5	9	32
BG.2 - 25 x 20	0034	25	20	49	54	10	29,5	9	32



TIPO	Art.	D	d	L	L1	L2	L3	F	D1
BG.2 - 32 x 8	1083	32	8	50	54	9	35,0	14	36
BG.2 - 32 x 10	1236	32	10	50	54	9	35,0	14	36
BG.2 - 32 x 12	3246	32	12	50	54	9	35,0	14	36
BG.2 - 32 x 14	2604	32	14	50	54	9	35,0	14	36
BG.2 - 32 x 16	3247	32	16	50	54	9	35,0	14	36
BG.2 - 32 x 18	2605	32	18	50	54	9	35,0	14	36
BG.2 - 32 x 20	3248	32	20	50	54	9	35,0	14	36
BG.2 - 32 x 25	3249	32	25	50	54	9	35,0	14	36

Figura 1

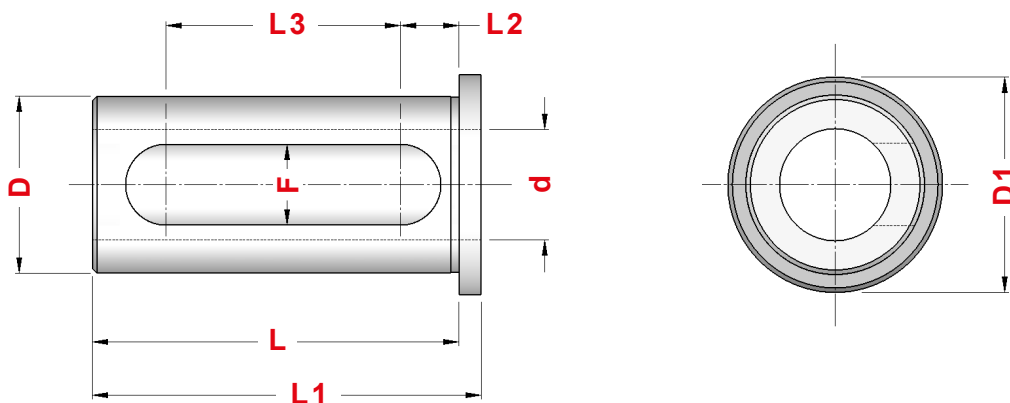


Figura 2

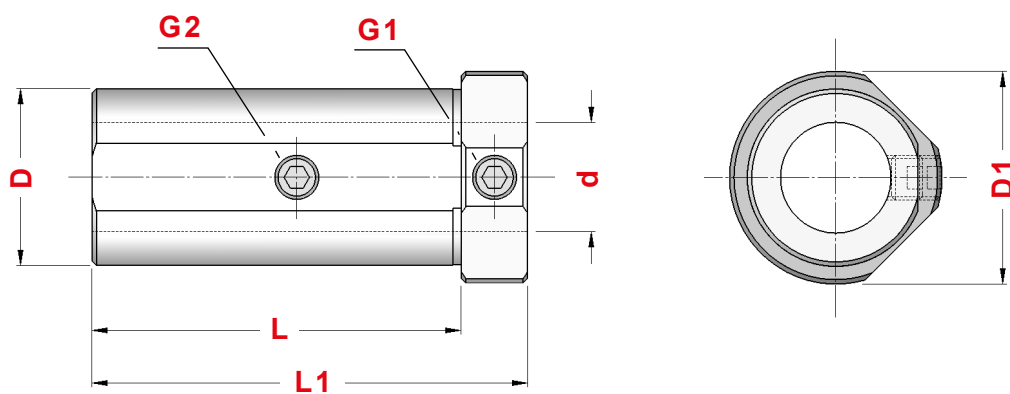
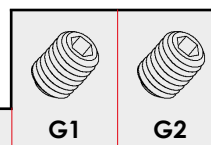
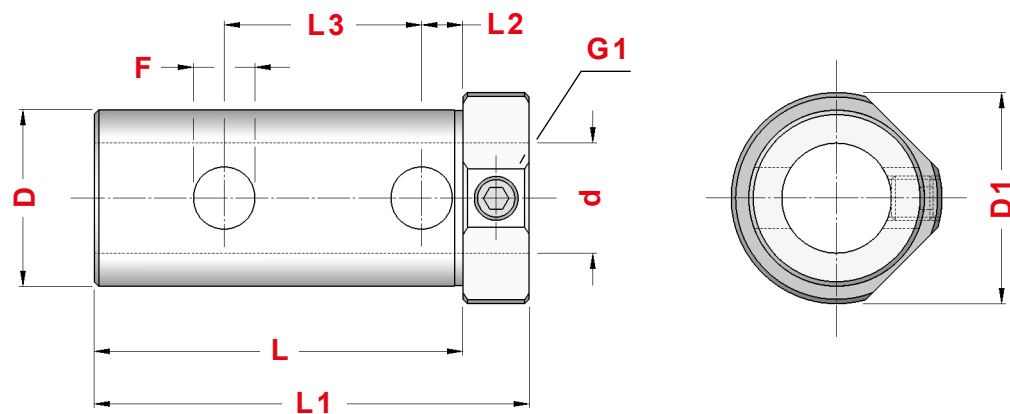
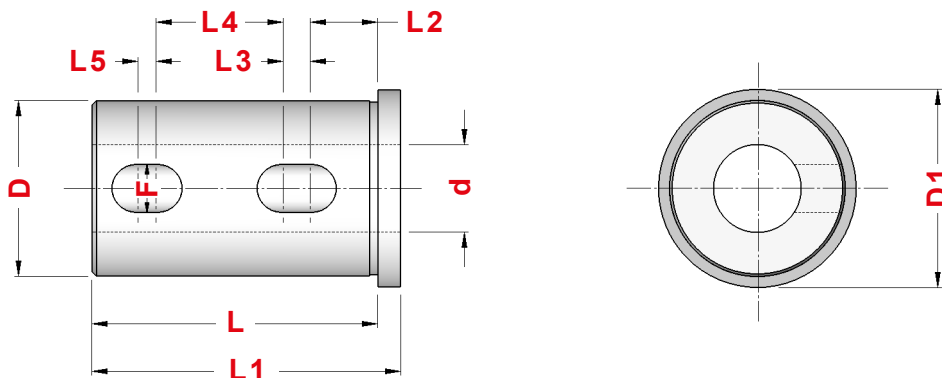


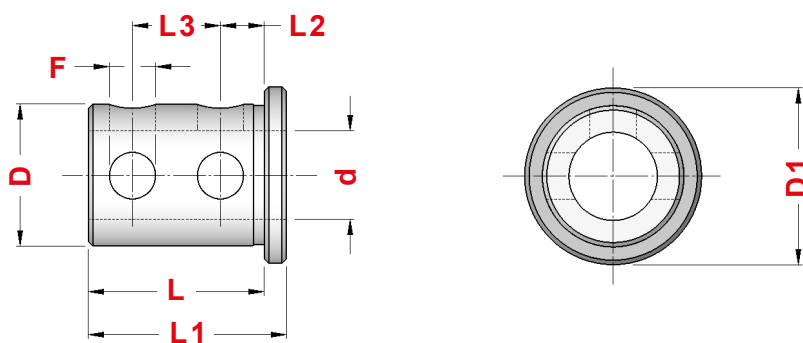
Figura 3



TIPO	Art.	D	d	L	L1	L2	L3	F	D1	Fig.	G1	G2
DW.1 - 20 x 8	8796	20	8	44	47	8,5	27	9	25	1	—	—
DW.1 - 20 x 10	8797	20	10	44	47	8,5	27	9	25	1	—	—
DW.1 - 20 x 12	8798	20	12	44	47	8,5	27	9	25	1	—	—
DW.1 - 20 x 16	8799	20	16	44	47	8,5	27	9	25	1	—	—
DW.1 - 40 x 10	8916	40	10	84	99	—	—	—	48	2	0377	4972
DW.1 - 40 x 12	8917	40	12	84	99	—	—	—	48	2	0377	4972
DW.1 - 40 x 16	8918	40	16	84	99	—	—	—	48	2	0377	0060
DW.1 - 40 x 20	8919	40	20	84	99	9,5	45	14	48	3	4972	—
DW.1 - 40 x 25	8920	40	25	84	99	9,5	45	14	48	3	4972	—
DW.1 - 40 x 32	8921	40	32	84	99	9,5	45	14	48	3	0385	—

DW.2**BUSSOLE DI RIDUZIONE CORTE PER MACCHINE TIPO DAEWOO etc.**
SHORT REDUCTION SLEEVES FOR DAEWOO MACHINES TYPE etc.

TIPO	Art.	D	d	L	L1	L2	L3	L4	L5	F	D1
DW.2 - 40 x 20	8897	40	20	65	70	15	7	28	5	11	45
DW.2 - 40 x 25	8898	40	25	65	70	15	7	28	5	11	45
DW.2 - 40 x 32	8899	40	32	65	70	15	7	28	5	11	45

NT.1**BUSSOLE DI RIDUZIONE PER MACCHINE TIPO NAKAMURA TOME etc.**
REDUCTION SLEEVES FOR NAKAMURA TOME MACHINES TYPE etc.

TIPO	Art.	D	d	L	L1	L2	L3	F	D1
NT.1 - 25 x 6	8874	25	6	40	45	10	20	10,5	32
NT.1 - 25 x 8	8875	25	8	40	45	10	20	10,5	32
NT.1 - 25 x 10	8876	25	10	40	45	10	20	10,5	32
NT.1 - 25 x 12	8877	25	12	40	45	10	20	10,5	32
NT.1 - 25 x 16	8878	25	16	40	45	10	20	10,5	32
NT.1 - 25 x 20	8879	25	20	40	45	10	20	10,5	32

Figura 1

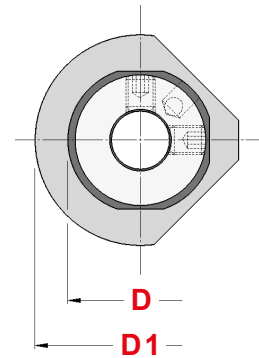
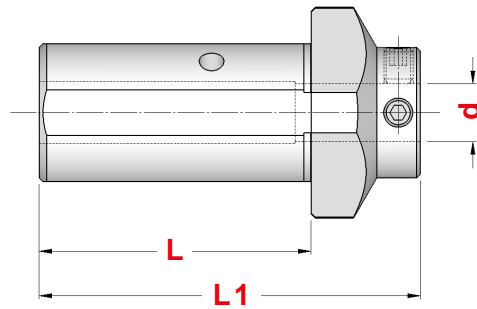


Figura 2

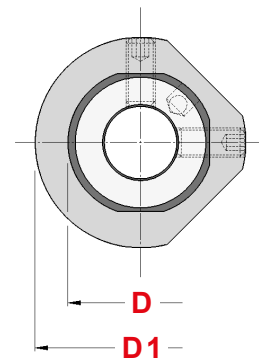
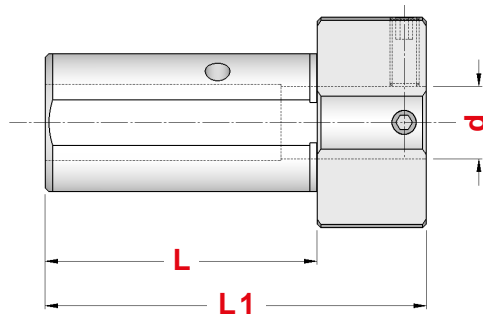
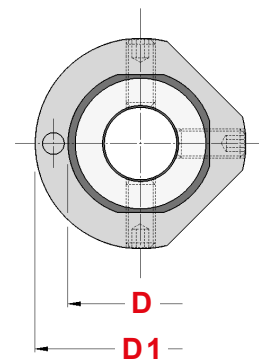
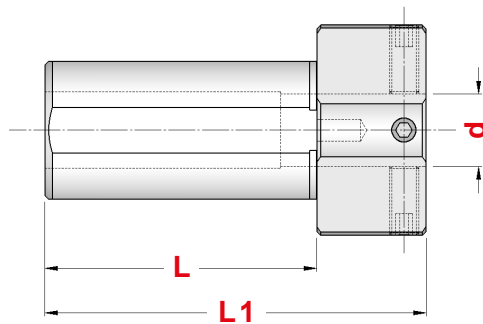



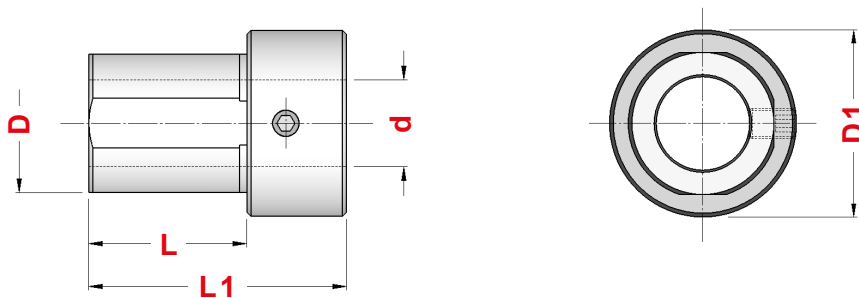
Figura 3



TIPO	Art.	D	d	L	L1	D1	Fig.	
MZ.1 - 32 x 8	8926	32	8	60	85	50	1	0371
MZ.1 - 32 x 10	8927	32	10	60	85	50	1	0371
MZ.1 - 32 x 12	8928	32	12	60	85	50	1	0375
MZ.1 - 32 x 16	8929	32	16	60	85	50	1	4971
MZ.1 - 32 x 20	8930	32	20	60	85	50	3	0375
MZ.1 - 32 x 25	8931	32	25	60	85	50	3	0375
MZ.1 - 40 x 8	5581	40	8	75	105	58	1	0371
MZ.1 - 40 x 10	5582	40	10	75	105	58	1	0371
MZ.1 - 40 x 12	5583	40	12	75	105	58	1	0375
MZ.1 - 40 x 16	5585	40	16	75	105	58	1	4971
MZ.1 - 40 x 20	5587	40	20	75	105	58	2	0183
MZ.1 - 40 x 25	5594	40	25	75	105	58	3	0021
MZ.1 - 40 x 32	5595	40	32	75	105	58	3	0021

MZ.2

BUSSOLE DI RIDUZIONE CORTE PER MACCHINE TIPO MAZAK etc. SHORT REDUCTION SLEEVES FOR MAZAK MACHINES TYPE etc.



TIPO	Art.	D	d	L	L1	D1	
MZ.2 - 32 x 20	8932	32	20	40	65	42	4971
MZ.2 - 32 x 25	8933	32	25	40	65	42	0021
MZ.2 - 40 x 20	5596	40	20	40	65	50	0382
MZ.2 - 40 x 25	5597	40	25	40	65	50	0375
MZ.2 - 40 x 32	5598	40	32	40	65	50	4971



MZ.3

BUSSOLE DI RIDUZIONE A CONO MORSE PER MACCHINE TIPO MAZAK etc. MORSE TAPER REDUCTION SLEEVES FOR MAZAK MACHINES TYPE etc.

Figura 1

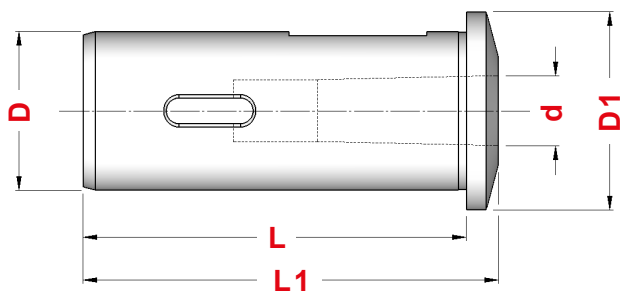
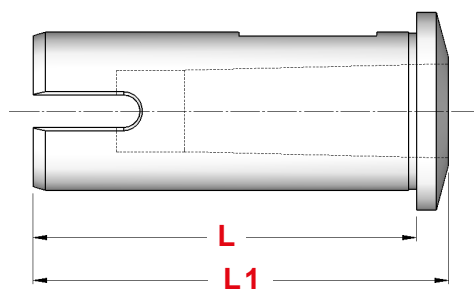


Figura 2



TIPO	Art.	D	CM	d	L	L1	D1	Fig.
MZ.3 - 32 x 1	8983	32	1	12,065	54	66	42	2
MZ.3 - 32 x 2	8984	32	2	17,780	58	70	42	2
MZ.3 - 40 x 1	8985	40	1	12,065	97	105	50	1
MZ.3 - 40 x 2	8986	40	2	17,780	97	105	50	1
MZ.3 - 40 x 3	8987	40	3	23,825	97	105	50	2

Figura 1

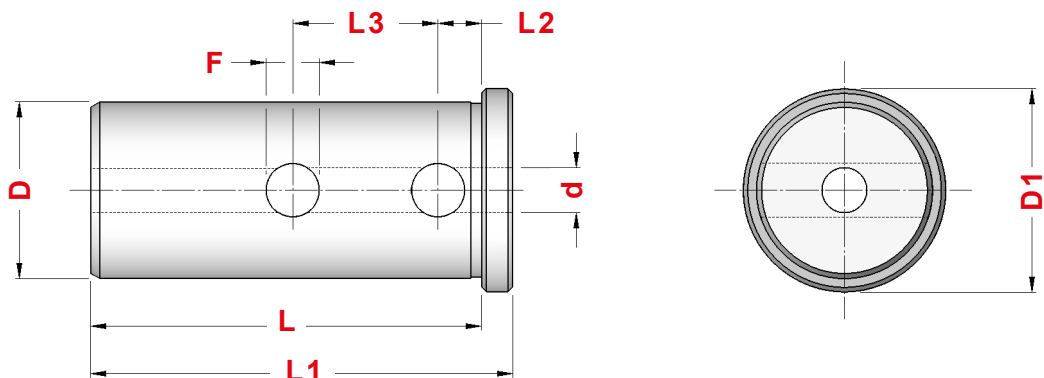
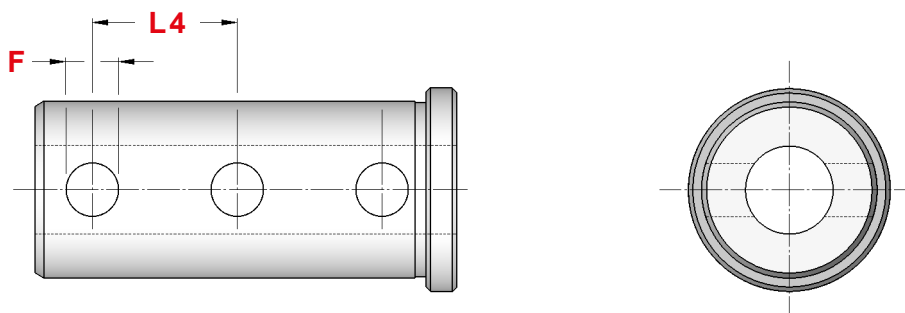


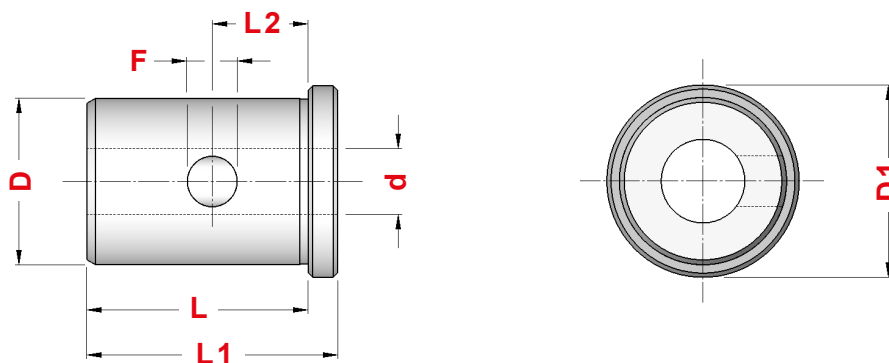
Figura 2



TIPO	Art.	D	d	L	L1	L2	L3	L4	F	D1	Fig.
MS.1 - 25 x 8	8934	25	8	78	83	9	31	30	11	30	2
MS.1 - 25 x 10	8935	25	10	78	83	9	31	30	11	30	2
MS.1 - 25 x 12	8936	25	12	78	83	9	31	30	11	30	2
MS.1 - 25 x 16	8938	25	16	78	83	9	31	30	11	30	2
MS.1 - 25 x 20	8940	25	20	78	83	9	31	30	11	30	2
MS.1 - 32 x 6	7035	32	6	79	86	10	29,5	—	10	38	1
MS.1 - 32 x 8	8941	32	8	79	86	10	29,5	—	10	38	1
MS.1 - 32 x 10	8942	32	10	79	86	10	29,5	—	10	38	1
MS.1 - 32 x 12	8943	32	12	79	86	10	29,5	29,5	10	38	2
MS.1 - 32 x 16	8944	32	16	79	86	10	29,5	29,5	10	38	2
MS.1 - 32 x 20	8945	32	20	79	86	10	29,5	29,5	10	38	2
MS.1 - 32 x 25	8946	32	25	79	86	10	29,5	29,5	10	38	2
MS.1 - 40 x 8	5900	40	8	89	96	10	33	—	12	46	1
MS.1 - 40 x 10	5901	40	10	89	96	10	33	—	12	46	1
MS.1 - 40 x 12	5902	40	12	89	96	10	33	—	12	46	1
MS.1 - 40 x 16	5903	40	16	89	96	10	33	33	12	46	2
MS.1 - 40 x 20	5904	40	20	89	96	10	33	33	12	46	2
MS.1 - 40 x 25	5905	40	25	89	96	10	33	33	12	46	2
MS.1 - 40 x 32	5906	40	32	89	96	10	33	33	12	46	2

MS.2

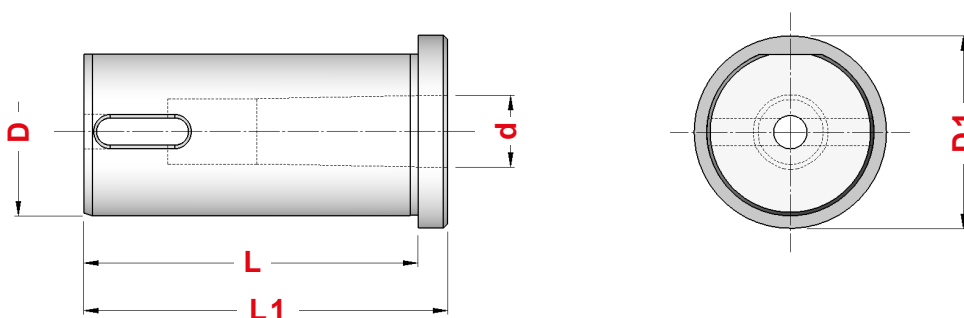
BUSSOLE DI RIDUZIONE CORTE PER MACCHINE TIPO MORI SEIKI etc. SHORT REDUCTION SLEEVES FOR MORI SEIKI MACHINES TYPE etc.



TIPO	Art.	D	d	L	L1	L2	F	D1
MS.2 - 32 x 16	8947	32	16	53	60	20	12	38
MS.2 - 32 x 20	8948	32	20	53	60	20	12	38
MS.2 - 32 x 25	8949	32	25	53	60	20	12	38
MS.2 - 40 x 16	8950	40	16	53	60	23	12	46
MS.2 - 40 x 20	8951	40	20	53	60	23	12	46
MS.2 - 40 x 25	8952	40	25	53	60	23	12	46
MS.2 - 40 x 32	8953	40	32	53	60	23	12	46

MS.4

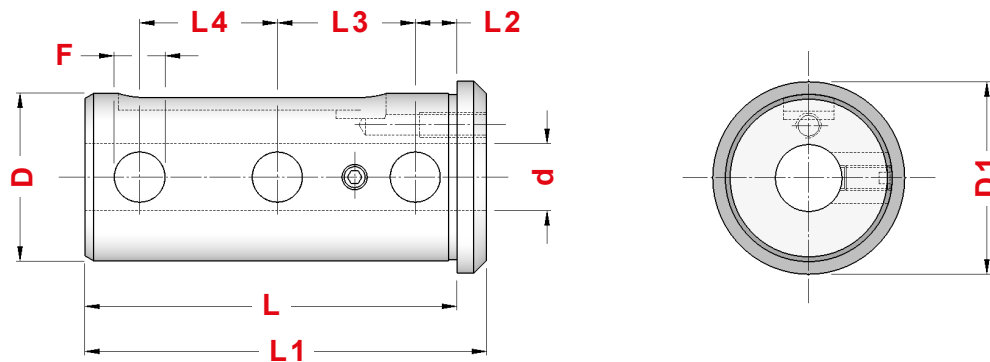
BUSSOLE DI RIDUZIONE A CM PER MACCHINE TIPO MORI SEIKI etc. MORSE TAPER REDUCTION SLEEVES FOR MORI SEIKI MACHINES TYPE etc.



TIPO	Art.	D	CM	d	L	L1	D1
MS.4 - 40 x 1	8958	40	1	12,065	89	96	46
MS.4 - 40 x 2	8959	40	2	17,780	89	96	46
MS.4 - 40 x 3	8960	40	3	23,825	89	108	46
MS.4 - 50 x 4	8961	50	4	31,267	89	135	56

MS.1A

BUSSOLE DI RIDUZIONE CON PASSAGGIO REFRIGERANTE PER MACCHINE TIPO MORI SEIKI etc. THROUGH COOLANT REDUCTION SLEEVES FOR MORI SEIKI MACHINES TYPE etc.

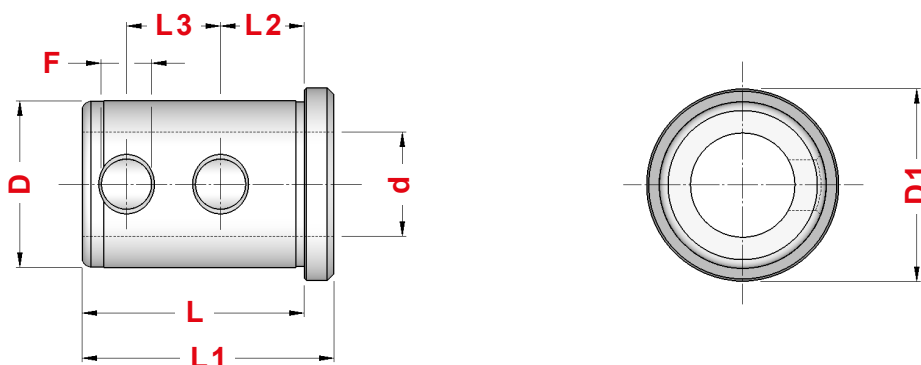


TIPO	Art.	D	d	L	L1	L2	L3	L4	F	D1	
MS.1A - 32 x 8	8850	32	8	78	85	10	29,5	—	10	40	—
MS.1A - 32 x 10	8851	32	10	78	85	10	29,5	—	10	40	—
MS.1A - 32 x 12	8852	32	12	78	85	10	29,5	—	10	40	—
MS.1A - 32 x 16	8853	32	16	78	85	10	29,5	29,5	10	40	—
MS.1A - 32 x 20*	8854	32	20	78	85	10	29,5	29,5	10	40	—
MS.1A - 32 x 25*	8855	32	25	78	85	10	29,5	29,5	10	40	—
MS.1A - 40 x 8	8856	40	8	89	96	10	33	—	12	46	0020
MS.1A - 40 x 10	8857	40	10	89	96	10	33	—	12	46	0020
MS.1A - 40 x 12	8858	40	12	89	96	10	33	—	12	46	0020
MS.1A - 40 x 16	8859	40	16	89	96	10	33	33	12	46	0020
MS.1A - 40 x 20	8860	40	20	89	96	10	33	33	12	46	0020
MS.1A - 40 x 25*	8861	40	25	89	96	10	33	33	12	46	0020
MS.1A - 40 x 32*	8862	40	32	89	96	10	33	33	12	46	—

* = senza foro di refrigerazione - without coolant hole

MS.2A

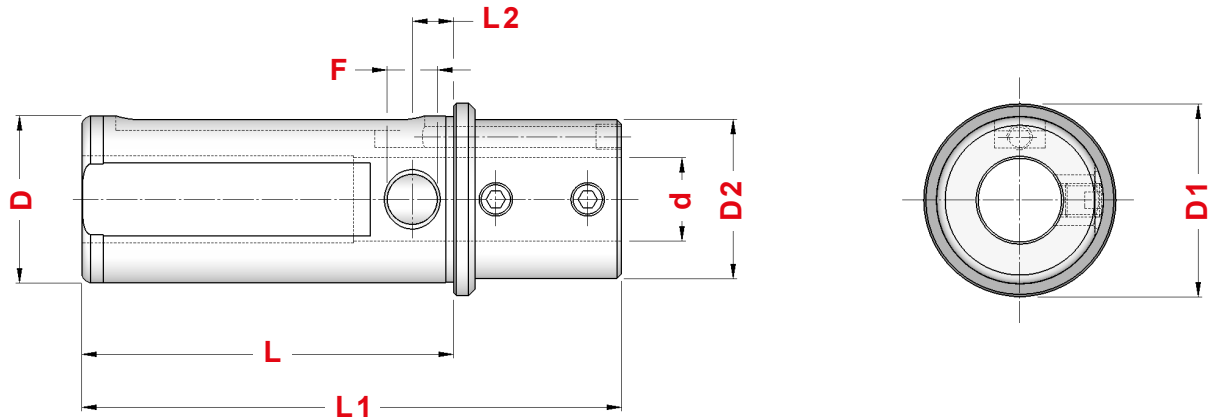
BUSSOLE DI RIDUZIONE CORTE CON PASSAGGIO REFRIGERANTE PER MACCHINE TIPO MORI SEIKI etc. THROUGH COOLANT SHORT REDUCTION SLEEVES FOR MORI SEIKI MACHINES TYPE etc.




TIPO	Art.	D	d	L	L1	L2	L3	F	D1
MS.2A - 40 x 16	8922	40	16	53	60	20	22,5	12	46
MS.2A - 40 x 20	8923	40	20	53	60	20	22,5	12	46
MS.2A - 40 x 25	8924	40	25	53	60	20	22,5	12	46
MS.2A - 40 x 32	8925	40	32	53	60	20	22,5	12	46

MS.3A

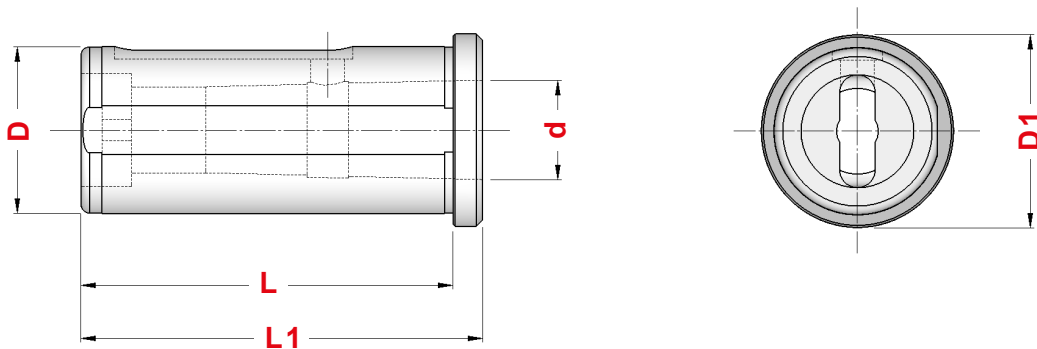
BUSSOLE DI RIDUZIONE PROLUNGATE CON PASSAGGIO REFRIGERANTE PER MACCHINE TIPO MORI SEIKI etc. THROUGH COOLANT EXTENDED REDUCTION SLEEVES FOR MORI SEIKI MACHINES TYPE etc.



TIPO	Art.	D	d	L	L1	L2	F	D1	D2	
MS.3A - 40 x 8	8863	40	8	89	129	10	12	46	38	0375
MS.3A - 40 x 10	8864	40	10	89	129	10	12	46	38	0375
MS.3A - 40 x 12	8865	40	12	89	129	10	12	46	38	0375
MS.3A - 40 x 16	8866	40	16	89	129	10	12	46	38	4971
MS.3A - 40 x 20	8867	40	20	89	129	10	12	46	38	0021

MS.4A

BUSSOLE DI RIDUZIONE A CONO MORSE CON PASSAGGIO REFRIGERANTE PER MACCHINE TIPO MORI SEIKI etc. THROUGH COOLANT MORSE TAPER REDUCTION SLEEVES FOR MORI SEIKI MACHINES TYPE etc.



TIPO	Art.	D	CM	d	L	L1	D1
MS.4A - 32 x 1	8868	32	1	12,065	78	85	40
MS.4A - 32 x 2	8869	32	2	17,780	78	85	40
MS.4A - 40 x 1	8870	40	1	12,065	89	96	46
MS.4A - 40 x 2	8871	40	2	17,780	89	96	46
MS.4A - 40 x 3	8872	40	3	23,825	89	96	46
MS.4A - 40 x 4	8873	40	4	31,267	109	116	46

OK.1

BUSSE DI RIDUZIONE PER MACCHINE TIPO OKUMA LT 10M / LT 200M etc. REDUCTION SLEEVES FOR OKUMA LT 10M / LT 200M MACHINES TYPE etc.

Figura 1

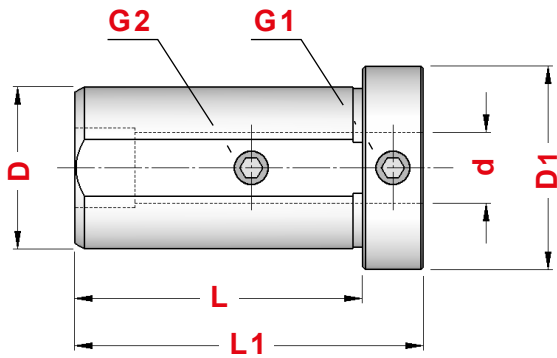
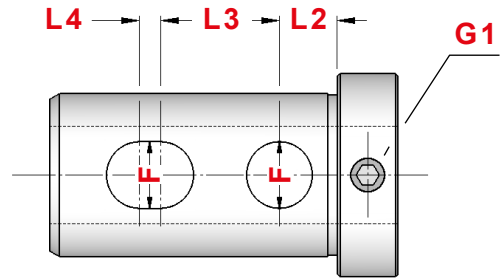


Figura 2



TIPO	Art.	D	d	L	L1	L2	L3	L4	F	D1	Fig.	G1	G2
OK.1 - 32 x 8	8900	32	8	57	69	—	—	—	—	40	1	0382	4971
OK.1 - 32 x 10	8901	32	10	57	69	—	—	—	—	40	1	0382	4971
OK.1 - 32 x 12	8902	32	12	57	69	—	—	—	—	40	1	0375	0021
OK.1 - 32 x 16	8904	32	16	59	71	11,5	35	4	13	40	2	0375	—
OK.1 - 32 x 20	8906	32	20	59	71	11,5	35	4	13	40	2	4971	—
OK.1 - 32 x 25	8907	32	25	59	71	11,5	35	4	13	40	2	0021	—

OK.2

BUSSE DI RIDUZIONE PER MACCHINE TIPO OKUMA LT 15M / LT 300M etc. REDUCTION SLEEVES FOR OKUMA LT 15M / LT 300M MACHINES TYPE etc.

Figura 1

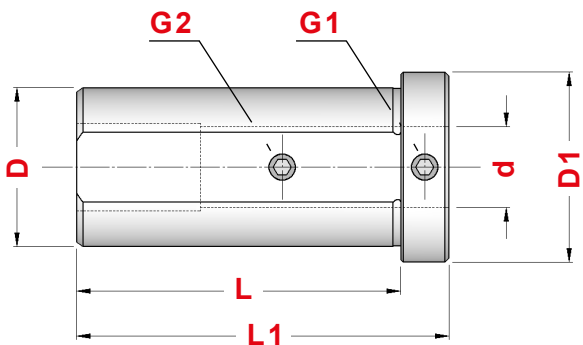
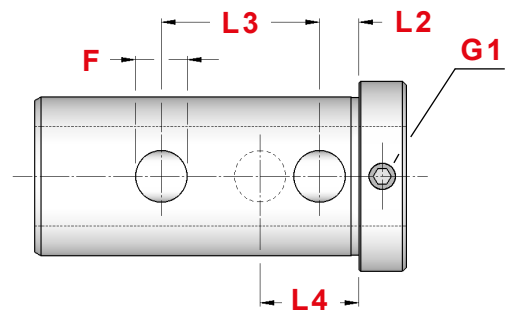


Figura 2



TIPO	Art.	D	d	L	L1	L2	L3	L4	F	D1	Fig.	G1	G2
OK.2 - 40 x 10	8962	40	10	82	94	—	—	—	—	48	1	0183	0375
OK.2 - 40 x 12	8963	40	12	82	94	—	—	—	—	48	1	0382	0375
OK.2 - 40 x 16	8964	40	16	82	94	—	—	—	—	48	1	0382	4971
OK.2 - 40 x 20	8965	40	20	82	94	—	—	—	—	48	1	0375	0021
OK.2 - 40 x 25	8966	40	25	82	94	10	40	25	13	48	2	0375	—
OK.2 - 40 x 32	8967	40	32	82	94	10	40	25	13	48	2	0021	—

OK.4
OK.5

BUSSOLE DI RIDUZIONE PER MACCHINE
TIPO OKUMA LB 15II / LB 15IIMW etc.
REDUCTION SLEEVES FOR OKUMA LB 15II / LB 15IIMW MACHINES TYPE etc.

Figura 1

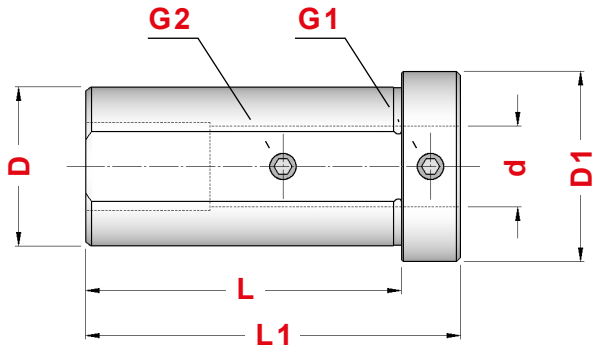
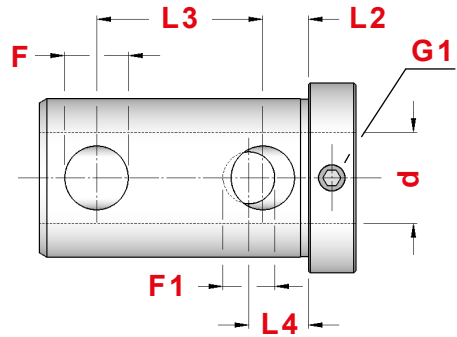


Figura 2



TIPO	Art.	D	d	L	L1	L2	L3	L4	F	F1	D1	Fig.	G1	G2
OK.4 - 40 x 10	8971	40	10	80	95	—	—	—	—	—	48	1	0183	0375
OK.4 - 40 x 12	8972	40	12	80	95	—	—	—	—	—	48	1	0377	4972
OK.4 - 40 x 16	8973	40	16	80	95	—	—	—	—	—	48	1	0377	0060
OK.4 - 40 x 20	8974	40	20	80	95	—	—	—	—	—	48	1	4972	0385
OK.4 - 40 x 25	8975	40	25	68	80	11,5	42	15	16	13	48	2	4971	—
OK.4 - 40 x 32	8976	40	32	68	80	11,5	42	15	16	13	48	2	0021	—

Figura 1

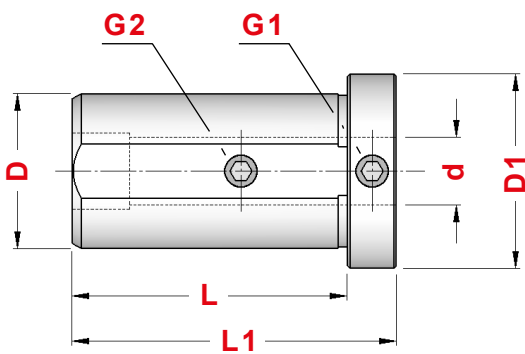
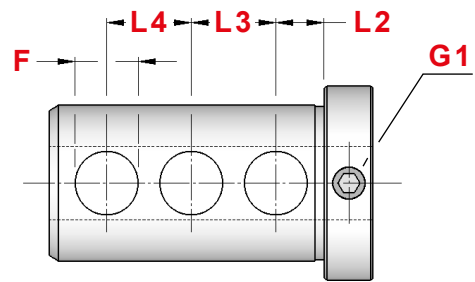


Figura 2



TIPO	Art.	D	d	L	L1	L2	L3	L4	F	D1	Fig.	G1	G2
OK.5 - 40 x 10	8977	40	10	77	89	—	—	—	—	48	1	0183	0375
OK.5 - 40 x 12	8978	40	12	77	89	—	—	—	—	48	1	0382	0375
OK.5 - 40 x 16	8979	40	16	77	89	—	—	—	—	48	1	0382	4971
OK.5 - 40 x 20	8980	40	20	77	89	—	—	—	—	48	1	0382	0021
OK.5 - 40 x 25	8981	40	25	77	89	10	29	29	12	48	2	0375	—
OK.5 - 40 x 32	8982	40	32	77	89	10	29	29	12	48	2	0021	—

OK.7

BUSSOLE DI RIDUZIONE PER MACCHINE TIPO OKUMA MACTURN 250 / MULTUS etc. REDUCTION SLEEVES FOR OKUMA MACTURN 250 / MULTUS MACHINES TYPE etc.

Figura 1

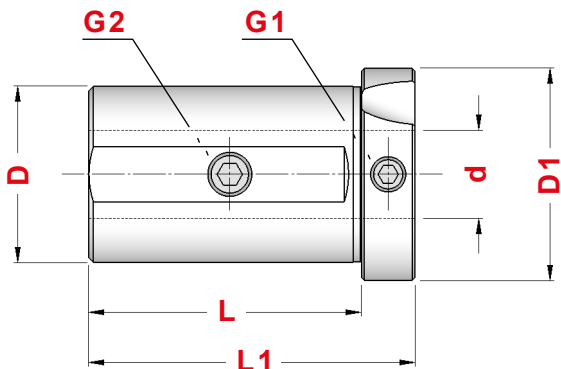
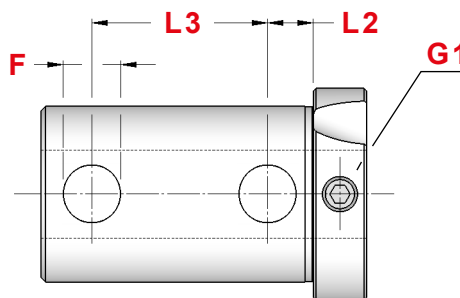
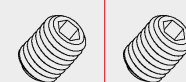


Figura 2

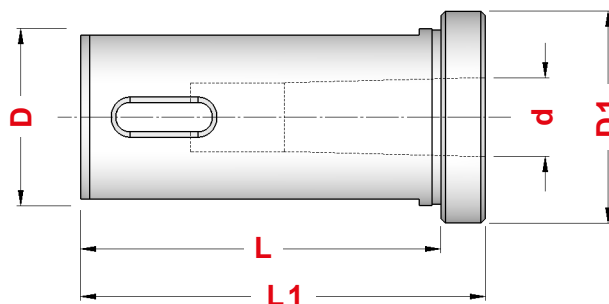


TIPO	Art.	D	d	L	L1	L2	L3	F	D1	Fig.	G1	G2
OK.7 - 40 x 10	8910	40	10	62	74	—	—	—	48	1	0382	0375
OK.7 - 40 x 12	8911	40	12	62	74	—	—	—	48	1	0382	0375
OK.7 - 40 x 16	8912	40	16	62	74	—	—	—	48	1	0382	0060
OK.7 - 40 x 20	8913	40	20	62	74	—	—	—	48	1	0375	0060
OK.7 - 40 x 25	8914	40	25	62	74	11,5	40	13	48	2	0375	—
OK.7 - 40 x 32	8915	40	32	62	74	11,5	40	13	48	2	0021	—



OK.6

BUSSOLE DI RIDUZIONE A CONO MORSE PER MACCHINE TIPO OKUMA etc. MORSE TAPER REDUCTION SLEEVES FOR OKUMA MACHINES TYPE etc.



TIPO	Art.	D	CM	d	L	L1	D1
OK.6 - 40 x 1	8968	40	1	12,065	82	87	48
OK.6 - 40 x 2	8969	40	2	17,780	82	92	48
OK.6 - 40 x 3	8970	40	3	23,825	82	112	48