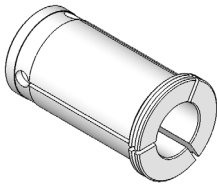


INDICE DI ALTRE PINZE PORTAUTENSILI

INDEX OF OTHER COLLETS FOR TOOLS

PINZE CILINDRICHE PER MANDRINI A FORTE SERRAGGIO

CYLINDRICAL COLLETS FOR
HIGH GRIP DEVICES

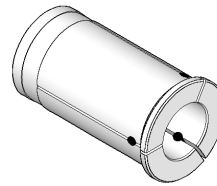


Programma
completo
a pag.

31

PINZE CILINDRICHE PER MANDRINI IDRAULICI

CYLINDRICAL COLLETS FOR
HYDRAULIC CHUCKS



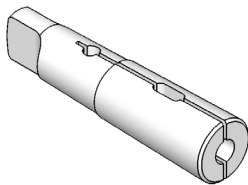
Programma
completo
a pag.

31

PINZE CONO MORSE

DIN 6328 E DIN 6329

MORSE TAPER COLLETS



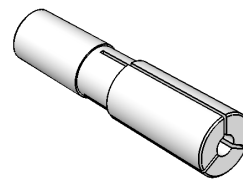
Programma
completo
a pag.

55

PINZE CONO MORSE

CON FILETTO

MORSE TAPER COLLETS
WITH THREAD

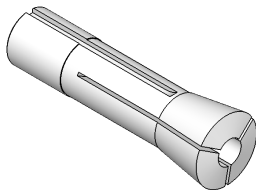


Programma
completo
a pag.

55

PINZE BRIDGEPORT R8

BRIDGEPORT R8 COLLETS

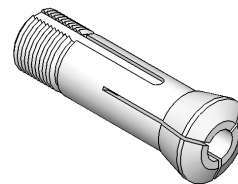


Programma
completo
a pag.

70

PINZE TIPO "5C"

"5C" TYPE COLLETS

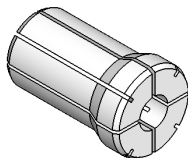


Programma
completo
a pag.

209

PINZE TIPO "DA"

"DA" TYPE COLLETS

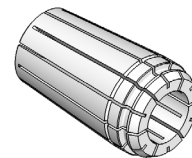


Programma
completo
a pag.

213

PINZE TIPO "TG"

"TG" TYPE COLLETS

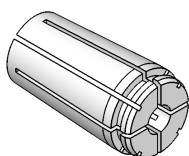


Programma
completo
a pag.

213

PINZE TIPO BAKUER

BAKUER TYPE COLLETS

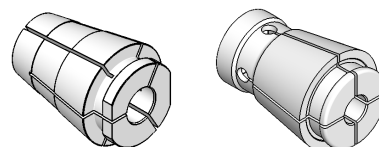


Programma
completo
a pag.

213

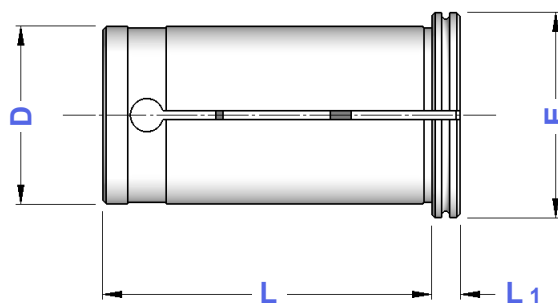
ALTRE PINZE PORTAUTENSILI

OTHER TOOL COLLETS

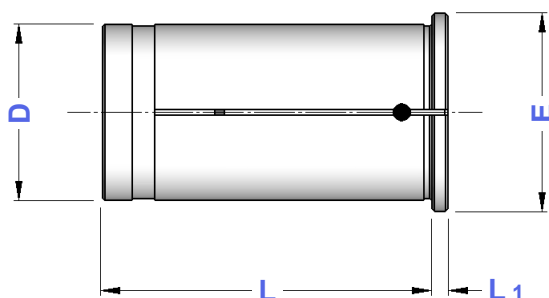


Programma
completo
a pag.

212

PC
PINZE CILINDRICHE PER MANDRINI A FORTE SERRAGGIO
 CYLINDRICAL COLLETS FOR HIGH GRIP DEVICES


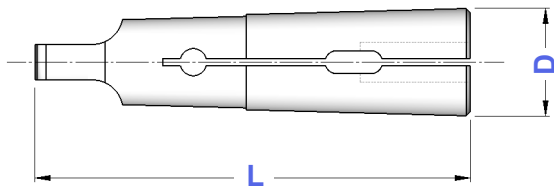
| TIPO | Art. | D | E | L | L1 | CAPACITA' |
|------|-------------|----|----|----|----|---|
| PC20 | 0809 | 20 | 25 | 50 | 5 | ∅ 3 - 4 - 5 - 6 - 7 - 8 - 9 - 10 - 11 - 12 - 13 - 14 - 15 - 16 - 17 - 18 |
| PC25 | 0820 | 25 | 30 | 55 | 5 | ∅ 3 - 4 - 5 - 6 - 7 - 8 - 9 - 10 - 11 - 12 - 13 - 14 - 15 - 16 - 17 - 18 19 - 20 - 21 - 22 - 23 |
| PC32 | 0810 | 32 | 37 | 60 | 5 | ∅ 3 - 4 - 5 - 6 - 7 - 8 - 9 - 10 - 11 - 12 - 13 - 14 - 15 - 16 - 17 - 18 19 - 20 - 21 - 22 - 23 - 24 - 25 - 26 - 27 - 28 - 29 - 30 |

PH
PINZE CILINDRICHE A TENUTA STAGNA PER MANDRINI IDRAULICI
 WATERTIGHT CYLINDRICAL COLLETS FOR HYDRAULIC CHUCKS


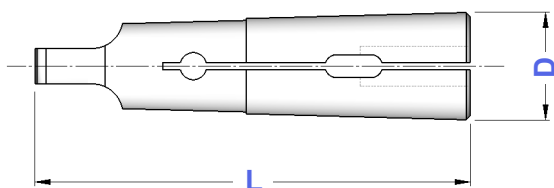
| TIPO | Art. | D | E | L | L1 | CAPACITA' |
|-------|-------------|----|----|------|----|---|
| PH 12 | 0520 | 12 | 16 | 44,5 | 2 | ∅ 3 - 4 - 5 - 6 - 7 - 8 - 9 - 10 |
| PH 20 | 0521 | 20 | 24 | 50,5 | 2 | ∅ 3 - 4 - 5 - 6 - 7 - 8 - 9 - 10 - 11 - 12 - 13 - 14 - 15 - 16 - 17 - 18 |
| PH 25 | 0676 | 25 | 30 | 56,5 | 3 | ∅ 3 - 4 - 5 - 6 - 7 - 8 - 9 - 10 - 11 - 12 - 13 - 14 - 15 - 16 - 17 - 18 19 - 20 - 21 - 22 |
| PH 32 | 0522 | 32 | 36 | 60,5 | 3 | ∅ 4 - 5 - 6 - 7 - 8 - 9 - 10 - 11 - 12 - 13 - 14 - 15 - 16 - 17 - 18 19 - 20 - 21 - 22 - 23 - 24 - 25 - 26 - 27 - 28 |

**DIN
6329****PINZE CONO MORSE PER PUNTE**
MT COLLETS FOR TWIST DRILLS

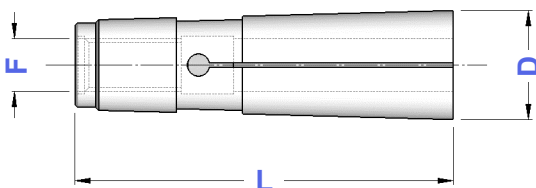
| TIPO | Art. | CAPACITA' | D | L | Einheits |
|--------------|---------------|-------------|------|-------|----------|
| CM 0 - PUNTE | 5570 P | 1,5 ÷ 5,5 | 9,0 | 59,5 | 510E |
| CM 1 - PUNTE | 0640 P | 1,5 ÷ 10,0 | 12,2 | 65,5 | 511E |
| CM 2 - PUNTE | 0641 P | 3,0 ÷ 15,0 | 18,0 | 80,0 | 514E |
| CM 3 - PUNTE | 0642 P | 8,0 ÷ 20,0 | 24,0 | 99,0 | 545E |
| CM 4 - PUNTE | 0643 P | 12,0 ÷ 25,0 | 31,5 | 124,0 | 548E |
| CM 5 - PUNTE | 5571 P | 20,0 ÷ 36,0 | 44,5 | 156,2 | 599E |

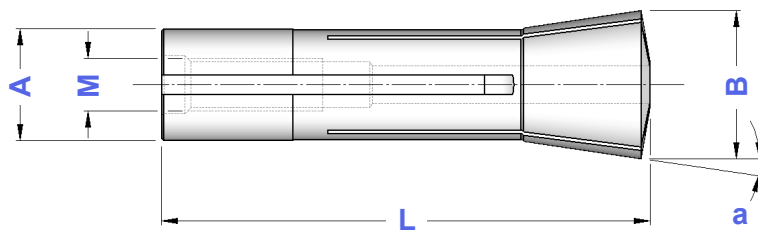
**DIN
6328****PINZE CONO MORSE PER MASCHI**
MT COLLETS FOR MILLING CUTTERS

| TIPO | Art. | CAPACITA' | D | L | Einheits |
|---------------|---------------|-------------|------|-------|----------|
| CM 0 - MASCHI | 5570 M | 2,5 ÷ 4,5 | 9,0 | 59,5 | 500E |
| CM 1 - MASCHI | 0640 M | 2,5 ÷ 10,0 | 12,2 | 65,5 | 501E |
| CM 2 - MASCHI | 0641 M | 4,5 ÷ 14,0 | 18,0 | 80,0 | 504E |
| CM 3 - MASCHI | 0642 M | 8,0 ÷ 18,0 | 24,0 | 99,0 | 535E |
| CM 4 - MASCHI | 0643 M | 12,0 ÷ 25,0 | 31,5 | 124,0 | 538E |
| CM 5 - MASCHI | 5571 M | 18,0 ÷ 36,0 | 44,5 | 156,2 | 589E |

**UNI
4702****PINZE CONO MORSE CON FILETTO**
THREADED MT COLLETS

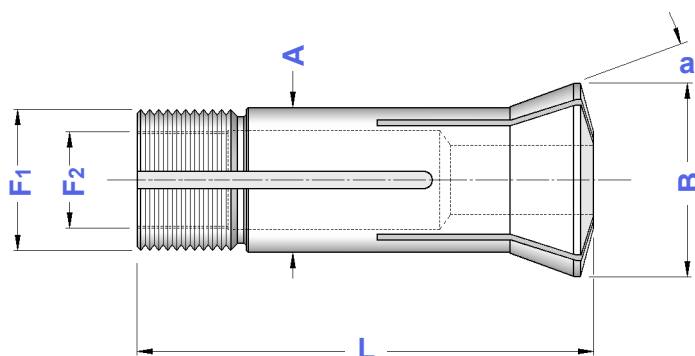
| TIPO | Art. | F | CAPACITA' | D | L | Einheits |
|------|-------------|------|-----------|------|-------|----------|
| CM 2 | 0752 | M 10 | 1 ÷ 14 | 18,0 | 69,0 | 503E |
| CM 3 | 0712 | M 12 | 3 ÷ 18 | 24,1 | 85,5 | 536E |
| CM 4 | 0865 | M 16 | 4 ÷ 25 | 31,6 | 108,5 | 539E |



R8**PINZA BRIDGEPORT R8**
BRIDGEPORT R8 COLLET

| TIPO | Art. | CAPACITA' | A | B | L | α | M | Einheits |
|----------|-------------|--------------------------|-------|----|-----|----------|------------|----------|
| PINZA R8 | 0716 | 2,0 ÷ 22 1/16" ÷ 7/8" | 24,12 | 32 | 106 | 8° 35' | 7/16 - 20" | 369E |

Gait 15

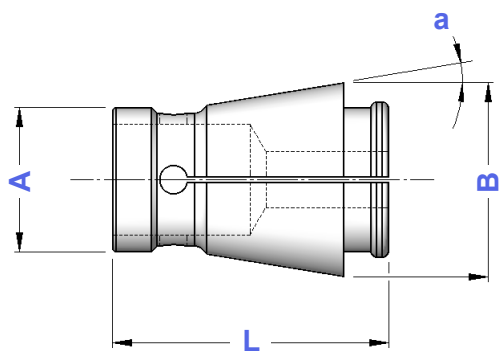
Catalogo Generale **pag. 70** on General Catalogue**5 C****PINZE TIRATE CON FILETTO ESTERNO ED INTERNO**
DRAWBACK COLLETS WITH EXTERNAL AND INTERNAL THREAD

| Art. | A | B | L | α | F1 | F2 | \varnothing max | Tipo |
|-------------|-------|------|------|----------|------------------|---------------|-------------------|-----------|
| 5523 | 31,75 | 37,3 | 87,0 | 10°03' | 31,4 x 20 f" 60° | 26,59 x 24 f" | 26,0 | 5C |

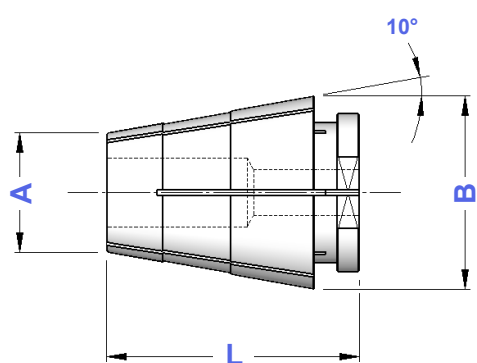
Gait 15

Catalogo Generale **pag. 209** on General Catalogue

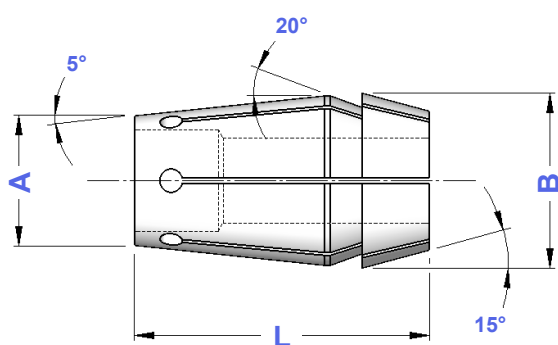
ALTRE PINZE PORTA UTENSILI OTHER TOOL COLLETS



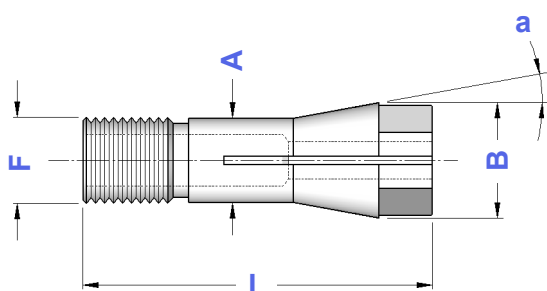
| Art. | A | B | L | α | CAPACITA' | Einheits |
|------|----|------|----|----------|-----------|----------|
| 0771 | 18 | 27,0 | 45 | 9° 15' | 2,0 ÷ 15 | 413E |
| 0772 | 26 | 35,0 | 50 | 9° 15' | 3,0 ÷ 20 | 443E |
| 0969 | 32 | 40,5 | 52 | 10° | 4,0 ÷ 26 | 448E |
| 0773 | 36 | 45,0 | 60 | 9° 15' | 4,0 ÷ 30 | — |



| Art. | A | B | L | CAPACITA' | Einheits |
|------|------|------|------|-----------|----------|
| 0963 | 10,0 | 15,5 | 20,0 | 2,0 ÷ 6 | 402E |
| 0486 | 10,0 | 17,5 | 24,0 | 2,0 ÷ 8 | 405E |
| 0438 | 11,0 | 19,0 | 30,0 | 2,0 ÷ 9 | — |
| 0971 | 11,0 | 20,0 | 31,0 | 2,0 ÷ 10 | — |
| 0527 | 13,0 | 22,0 | 36,0 | 2,0 ÷ 12 | — |
| 0321 | 14,0 | 22,5 | 32,0 | 2,0 ÷ 12 | — |
| 0439 | 13,5 | 24,0 | 36,0 | 3,0 ÷ 12 | 408E |
| 1151 | 21,0 | 34,0 | 45,0 | 3,0 ÷ 20 | 441E |



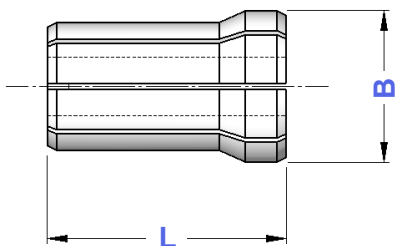
| Art. | A | B | L | CAPACITA' |
|------|------|------|------|-----------|
| 0720 | 23,5 | 30,0 | 52,5 | 2,0 ÷ 20 |



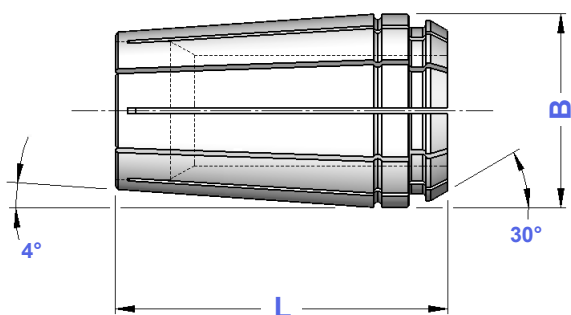
| Art. | A | B | L | α | F | Ø max | Einheits |
|------|----|----|------|----------|-------------|-------|----------|
| 0890 | 6 | 9 | 28,5 | 10° | M 6 x 0,75 | 5,00 | 600E |
| 0947 | 8 | 11 | 33,0 | 10° | M 8 x 0,75 | 6,00 | 601E |
| 0537 | 10 | 14 | 34,0 | 15° | M 10 x 0,75 | 8,00 | 6314E |
| 0898 | 16 | 21 | 52,0 | 15° | M 16 x 1,00 | 12,00 | — |

DA**PINZE PORTA UTENSILI - TIPO "DA"**
TOOL COLLETS - "DA" TYPE

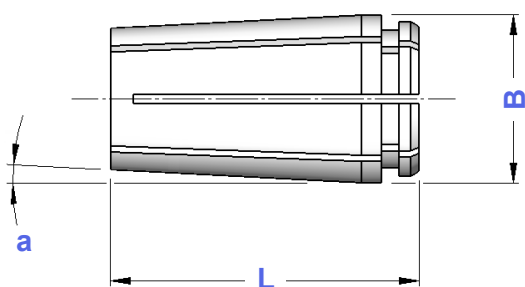
| Art. | Tipo | B | L | CAPACITA' | ESPANSIONE | Einheits |
|------|--------|------|------|-----------|------------|----------|
| 5118 | DA.300 | 9,5 | 25,4 | 1 ÷ 6,5 | 0,5 | 416E |
| 5119 | DA.200 | 13,6 | 30,3 | 1 ÷ 10,0 | 0,5 | 417E |
| 5120 | DA.100 | 19,4 | 36,7 | 1 ÷ 15,0 | 0,5 | 418E |
| 5121 | DA.180 | 26,2 | 41,6 | 1 ÷ 20,0 | 0,5 | 419E |
| 5129 | DA.400 | 36,9 | 51,0 | 6 ÷ 25,5 | 0,5 | 465E |

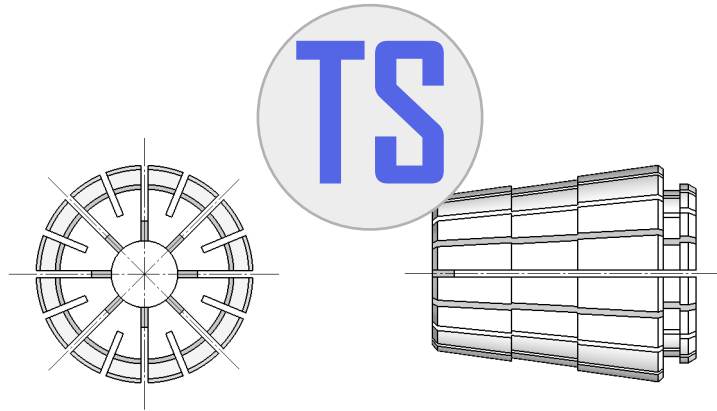
**TG****PINZE PORTAUTENSILI - TIPO "TG"**
TOOL COLLETS - "TG" TYPE

| Art. | Tipo | B | L | CAPACITA' | ESPANSIONE | Einheits |
|------|---------|------|------|-----------|------------|----------|
| 1250 | TG. 75 | 27,0 | 46,9 | 2,5 ÷ 20 | 0,5 | 420E |
| 1251 | TG. 100 | 35,0 | 60,4 | 3 ÷ 26 | 0,5 | 464E |
| 1252 | TG. 150 | 50,8 | 76,2 | 12 ÷ 40 | 0,5 | 466E |

**BAKUER****PINZE PORTA UTENSILI - TIPO BAKUER**
TOOL COLLETS - BAKUER TYPE

| Art. | Tipo | B | L | α | CAPACITA' | ESPANSIONE |
|------|----------|------|------|----------|-------------|------------|
| 0896 | M 2 - 6 | 11,1 | 23,0 | 4° | 2,0 ÷ 6,0 | 0,5 |
| 0895 | M 3 - 10 | 15,6 | 35,0 | 4° | 3,0 ÷ 10,0 | 0,5 |
| 0736 | P 4 - 16 | 25,6 | 48,0 | 3° | 4,0 ÷ 16,0 | 0,5 |
| 0737 | P 6 - 20 | 29,6 | 54,0 | 3° | 6,0 ÷ 20,0 | 0,5 |
| 0738 | P 8 - 25 | 35,7 | 60,0 | 3° | 8,0 ÷ 25,0 | 0,1 |
| 0774 | P10 - 32 | 44,7 | 67,0 | 3° | 10,0 ÷ 32,0 | 0,1 |





**Pinze, ghiera e chiavi
del sistema TS (ER compatibile),
le potete trovare a pagina 26 e 27
del Catalogo Generale**

***TS system collets, nuts and wrenches
(ER compatible)
you will find
on General Catalogue
page 26 and 27***