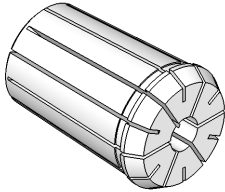


INDICE DEL SISTEMA EOC - DIN 6388

INDEX OF EOC SYSTEM - DIN 6388

PINZE EOC - DIN 6388

EOC COLLETS - DIN 6388

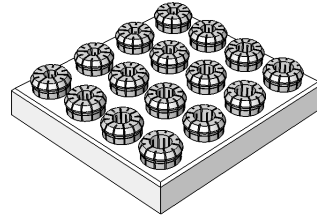


Programma completo da pag.

28

SERIE DI PINZE EOC

SERIES OF EOC COLLETS

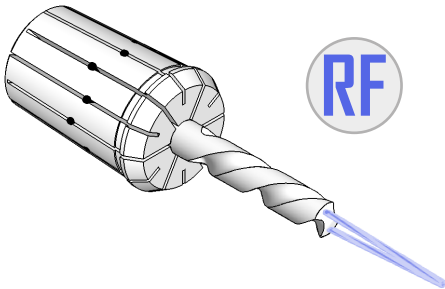


Programma completo da pag.

28

A TENUTA STAGNA

WATERTIGHT TYPE



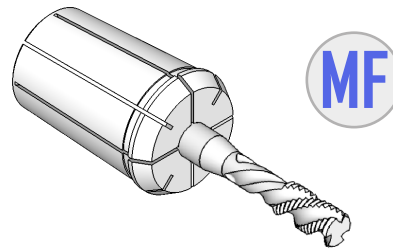
RF

Programma completo a pag.

29

CON QUADRO PER MASCHI

WITH SQUARE FOR TAPS



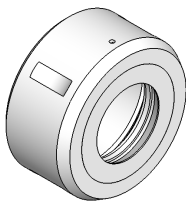
MF

Programma completo a pag.

29

GHIERE DI SERRAGGIO

CLAMPING NUTS

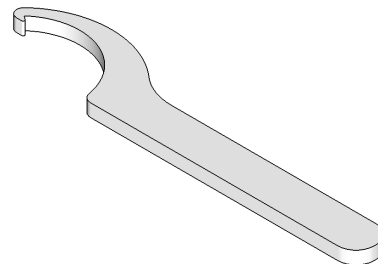


Programma completo a pag.

30

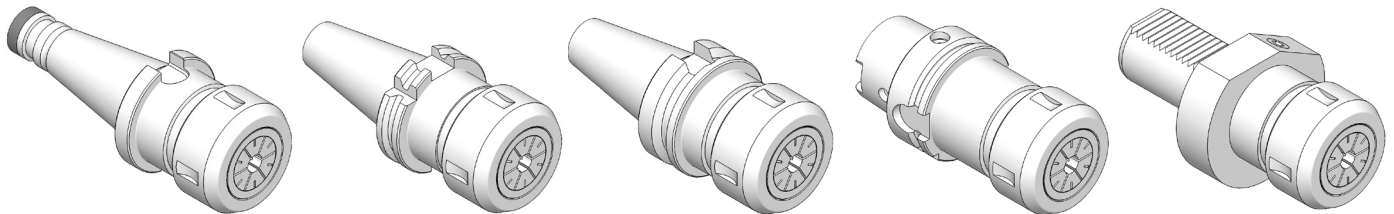
CHIAVI

WRENCHES



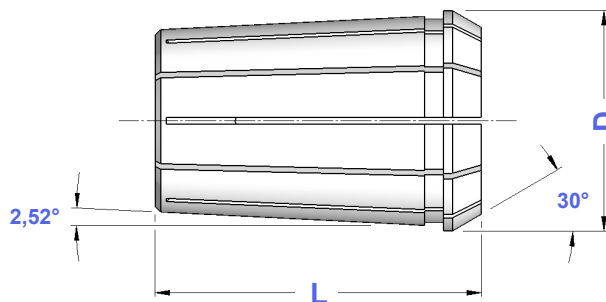
Programma completo a pag.

30



Trovate i portapinza EOC nei paragrafi degli attacchi
DIN 2080 - DIN 69871 - BT - HSK - VDI

You will find EOC collet chucks in
DIN 2080 - DIN 69871 - BT - HSK - VDI shanks paragraphs



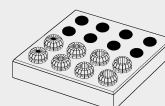
TIPO	Art.	CAPACITA'	PROGRESSIONE	D	L	Einheits
EOC 6	0578	1 ÷ 6	mm 0,5	11,50	21	400E
EOC 8	0624	1 ÷ 8	mm 0,5	14,50	26	401E
EOC 10	0633	1 ÷ 10	mm 0,5	17,20	30	404E
EOC 12	0645	1 ÷ 12	mm 0,5	19,80	34	407E
EOC 16	0768	2 ÷ 16	mm 0,5	25,50	40	415E
EOC 20	0783	2 ÷ 20	mm 0,5	29,80	45	4541E
EOC 25	0769	2 ÷ 25	mm 0,5	35,05	52	462E
EOC 32	0770	3 ÷ 32	mm 0,5	43,70	60	467E
EOC 40	0802	8 ÷ 40	mm 0,5	52,20	68	468E



SERIE RIDOTTA DI PINZE EOC
REDUCED SETS OF EOC COLLETS

TIPO	DIAMETRI	N° PINZE	ARTICOLO	ARTICOLO
EOC 16 - Ridotto	∅ 4 - 6 - 8 - 10 - 12 - 16	6	7010	7016
EOC 25 - Ridotto	∅ 6 - 8 - 10 - 12 - 16 - 20 - 25	7	7011	7017
EOC 32 - Ridotto	∅ 6 - 8 - 10 - 12 - 16 - 20 - 25 - 32	8	7012	7018

IN CONTENITORE
DI CARTONE
IN CARTON BOX



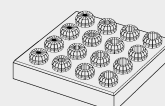
IN CASSETTA
IN CASE



SERIE COMPLETA DI PINZE EOC
COMPLETE SETS OF EOC COLLETS

TIPO	DIAMETRI	N° PINZE	ARTICOLO	ARTICOLO
EOC 16 - Completo	da ∅ 2 a ∅ 16	15	7013	7019
EOC 25 - Completo	da ∅ 2 a ∅ 25	24	7014	7020
EOC 32 - Completo	da ∅ 4 a ∅ 32	29	7015	7021

IN CONTENITORE
DI CARTONE
IN CARTON BOX



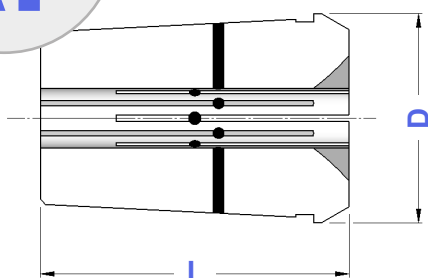
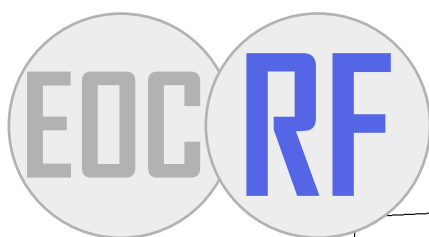
IN CASSETTA
IN CASE



E' possibile completare tutte le cassette di corredo con il portapinza e la chiave di vostro interesse
It is possible to complete all sets in case with collet chuck and wrench you need

**DIN
6388**

PINZE EOC A TENUTA STAGNA
WATERTIGHT EOC COLLETS



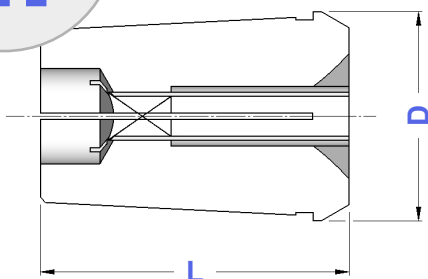
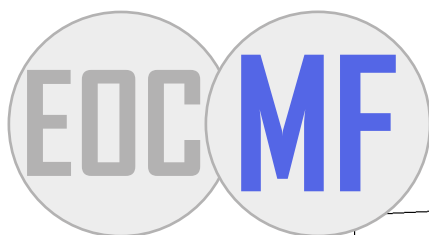
**Pinze con inserti in neoprene
e passaggio centrale del refrigerante.**
Pressione di esercizio: max 40 Bar / 600 PSI
Bloccano solo il diametro nominale.

*Collets with neoprene insertions and
coolant only through the collet hole.
Working pressure: max 40 Bar / 600 PSI
Those collets clamp only nominal diameter.*

TIPO	Art.	CAPACITA'	D	L	PROGRESSIONE
EOC 12 RF	0645 RF	1 ÷ 12	19,90	34	mm 0,5
EOC 16 RF	0768 RF	2 ÷ 16	25,50	40	mm 0,5
EOC 20 RF	0783 RF	3 ÷ 20	30,00	45	mm 0,5
EOC 25 RF	0769 RF	3 ÷ 25	35,05	52	mm 0,5
EOC 32 RF	0770 RF	4 ÷ 32	44,00	60	mm 0,5

**DIN
6388**

PINZE EOC CON QUADRO PER MASCHIATURA
EOC TAPPING COLLETS WITH SQUARE



**Il quadro di trascinamento per il maschio
è ricavato sul fondo della pinza.**

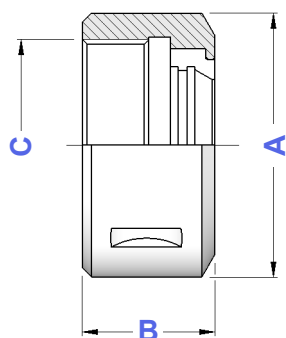
*Tap drag square got out
on the bottom of the collet.*

TIPO	Art.	CAPACITA'	D	L
EOC 16 - con Quadro	0768 MF	da Ø3,5 a Ø12,0	25,50	40
EOC 20 - con Quadro	0783 MF	da Ø3,5 a Ø16,0	30,00	45
EOC 25 - con Quadro	0769 MF	da Ø3,5 a Ø20,0	35,05	52
EOC 32 - con Quadro	0770 MF	da Ø3,5 a Ø28,0	44,00	60

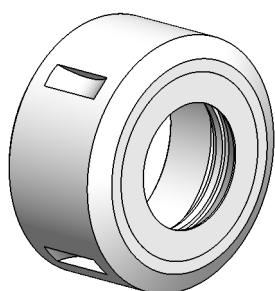
DIN 6388

GHIERE GOC PER PINZE EOC

GOC CLAMPING NUTS FOR EOC COLLETS

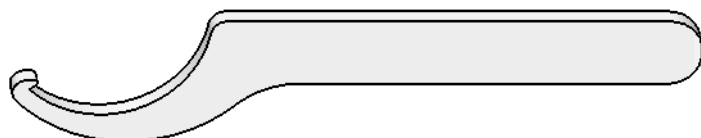


TIPO	Art.	A	B	C		
GOC 6	8641	18	14,0	14 x 1,0	0578	2880
GOC 8	8642	26	19,0	20 x 1,5	0624	2820
GOC 10	8643	30	19,0	22 x 1,5	0633	2881
GOC 12	8644	35	20,0	27 x 1,5	0645	2882
GOC 16	4067	43	24,0	33 x 1,5	0768	2883
GOC 20	4008	50	28,0	42 x 2,0	0783	2908
GOC 25	4068	60	30,0	48 x 2,0	0769	2909
GOC 32	4069	72	33,5	60 x 2,5	0770	2910
GOC 40	8645	85	37,0	68 x 2,5	0802	2836

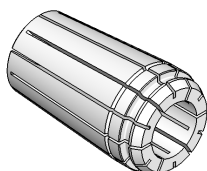


CHIAVI PER GHIERE GOC

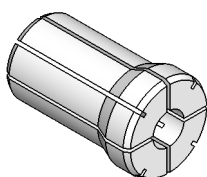
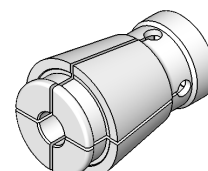
WRENCHES FOR GOC NUTS



TIPO	Art.	
CH 6 GOC	2880	8641
CH 8 GOC	2820	8642
CH 10 GOC	2881	8643
CH 12 GOC	2882	8644
CH 16 GOC	2883	4067
CH 20 GOC	2908	4008
CH 25 GOC	2909	4068
CH 32 GOC	2910	4069
CH 40 GOC	2836	8645



Tutti gli altri tipi di pinze
li potete trovare
nel paragrafo "Pinze"
da pag. 201 a pag. 215



All other types of collets
you will find
in "Collets" paragraph
from page 201 to 215

