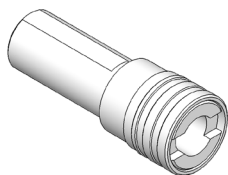


INDICE DEI MASCHIATORI A CAMBIO RAPIDO

INDEX OF QUICK CHANGE TAP HOLDERS

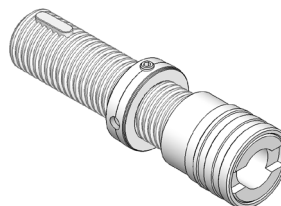
ATTACCO CILINDRICO DIN 1835 A - DIN 1835 B CYLINDRICAL SHANK



Programma completo da pag.

40

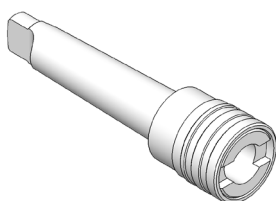
ATTACCO TRAPEZIO DIN 6327 AUTOMOTIVE SHANK



Programma completo a pag.

49

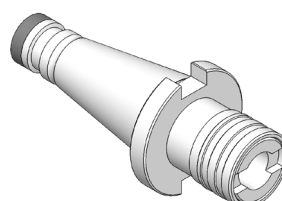
ATTACCO CONO MORSE DIN 228 A - DIN 228 B MORSE TAPER SHANK



Programma completo da pag.

58

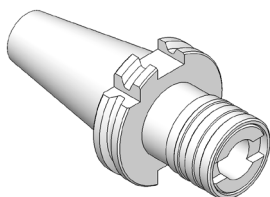
ATTACCO ISO DIN 2080 DIN 2080 ISO SHANK



Programma completo a pag.

87

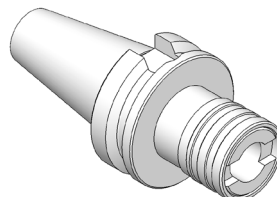
ATTACCO TC - DIN 69871 DIN 69871 - TC SHANK



Programma completo a pag.

113

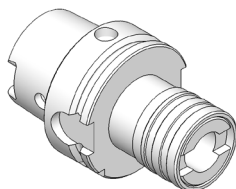
ATTACCO BT - MAS 403 BT - MAS 403 SHANK



Programma completo a pag.

141

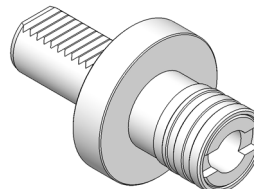
ATTACCO HSK - DIN 69893 DIN 69893 - HSK SHANK



Programma completo da pag.

157

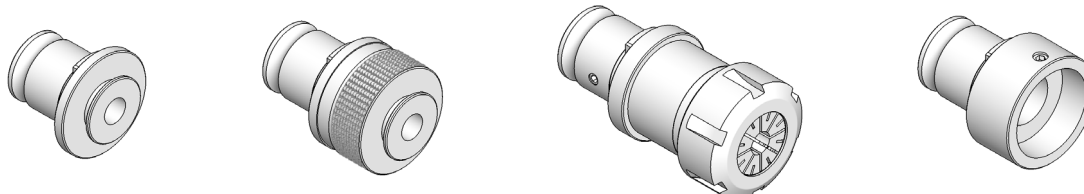
ATTACCO VDI - DIN 69880 DIN 69880 - VDI SHANK



Programma completo a pag.

261

BUSSOLE E RIDUZIONI A CAMBIO RAPIDO QUICK CHANGE TAP ADAPTERS AND REDUCTIONS

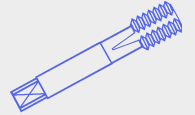


Programma completo da pag.

172

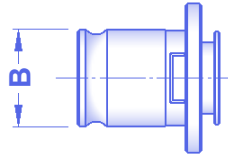
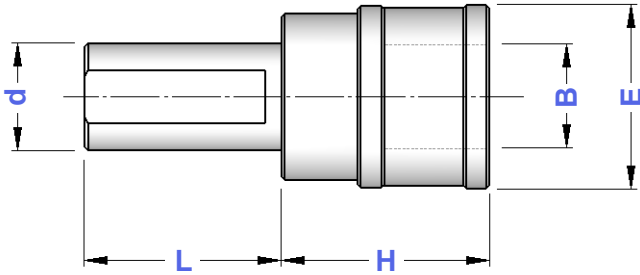
**DIN
1835 A**

**MASCHIATORI CON ATTACCO CILINDRICO
SENZA COMPENSAZIONE**
STRAIGHT SHANK TAP HOLDERS - WITHOUT COMPENSATION



TIPO	Art.	H	L	E	B	
d 20 - B.1 FISSO	2059	40	50	33	19	M 3 ÷ M 12 (*M16)
d 20 - B.2 FISSO	2060	60	50	50	31	M 6 ÷ M 20 (*M30)
d 25 - B.1 FISSO	2061	40	56	33	19	M 3 ÷ M 12 (*M16)
d 25 - B.2 FISSO	2062	60	56	50	31	M 6 ÷ M 20 (*M30)
d 32 - B.1 FISSO	2067	40	60	33	19	M 3 ÷ M 12 (*M16)
d 32 - B.2 FISSO	2068	60	60	50	31	M 6 ÷ M 20 (*M30)
d 40 - B.1 FISSO	2080	40	72	33	19	M 3 ÷ M 12 (*M16)
d 40 - B.2 FISSO	2081	60	72	50	31	M 6 ÷ M 20 (*M30)

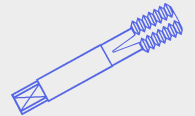
* Bussole tipo GR
Adapters GR type



**Bussole a Maschiare da pag. 172
a pag. 175 del Catalogo Generale**
Tap Adapters on General Catalogue
from page 172 to page 175

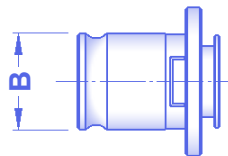
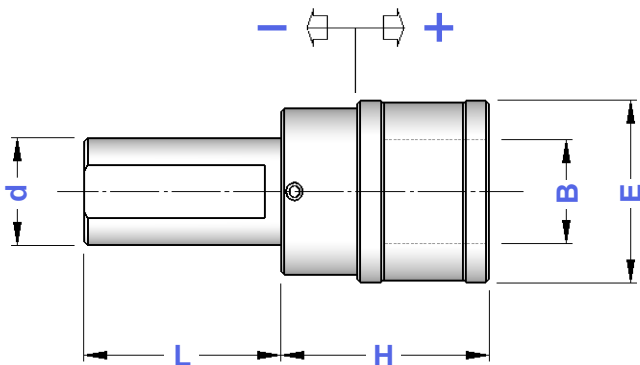
**DIN
1835 A**

**MASCHIATORI CON ATTACCO CILINDRICO
DOPPIA COMPENSAZIONE**
STRAIGHT SHANK TAP HOLDERS - DOUBLE COMPENSATION



TIPO	Art.	H	L	E	B	COMPENSAZIONE	
d 16 - B.0	3807	37	50	26	13	- 6,5 + 6,5	M 1 ÷ M 10
d 16 - B.1	3808	40	56	36	19	- 7,5 + 7,5	M 3 ÷ M 12 (*M16)
d 20 - B.0	3809	37	50	26	13	- 6,5 + 6,5	M 1 ÷ M 10
d 20 - B.1	3851	40	50	38	19	- 7,5 + 7,5	M 3 ÷ M 12 (*M16)
d 20 - B.2	3852	63	60	53	31	-15,0 + 15,0	M 6 ÷ M 20 (*M30)
d 25 - B.1	4451	40	56	38	19	- 7,5 + 7,5	M 3 ÷ M 12 (*M16)
d 25 - B.2	4452	60	60	53	31	-12,5 + 12,5	M 6 ÷ M 20 (*M30)
d 32 - B.1	4453	40	60	38	19	- 7,5 + 7,5	M 3 ÷ M 12 (*M16)
d 32 - B.2	4454	63	60	53	31	-12,5 + 12,5	M 6 ÷ M 20 (*M30)
d 32 - B.3	3598	120	60	79	48	-24,0 + 24,0	M14 ÷ M 33 (*M48)
d 40 - B.1	4455	40	72	38	19	- 7,5 + 7,5	M 3 ÷ M 12 (*M16)
d 40 - B.2	4456	63	72	53	31	-12,5 + 12,5	M 6 ÷ M 20 (*M30)
d 40 - B.3	3857	98	72	79	48	-24,0 + 24,0	M14 ÷ M 33 (*M48)

* Bussole tipo GR
Adapters GR type



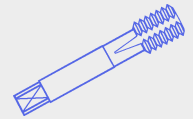
**Bussole a Maschiare da pag. 172
a pag. 175 del Catalogo Generale**
Tap Adapters on General Catalogue
from page 172 to page 175

I maschiatori sono fornibili anche con la sola compensazione a trazione (SFILAMENTO)
Tap holders are also available with traction compensation only (TENSION ONLY)

**DIN
1835 B**

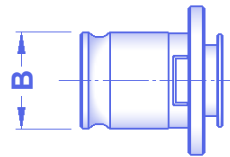
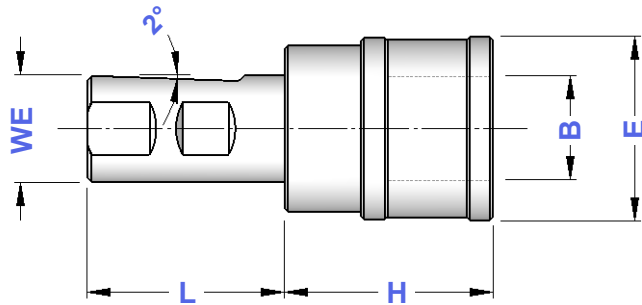
**MASCHIATORI CON ATTACCO WELDON
SENZA COMPENSAZIONE**

WELDON SHANK TAP HOLDERS - WITHOUT COMPENSATION



TIPO	Art.	H	L	E	B	
WE 20 - B. 1 FISSO	2059	40	50	33	19	M 3 ÷ M 12 (*M16)
WE 20 - B. 2 FISSO	2060	60	50	50	31	M 6 ÷ M 20 (*M30)
WE 25 - B. 1 FISSO	2061	40	56	33	19	M 3 ÷ M 12 (*M16)
WE 25 - B. 2 FISSO	2062	60	56	50	31	M 6 ÷ M 20 (*M30)
WE 32 - B. 1 FISSO	2067	40	60	33	19	M 3 ÷ M 12 (*M16)
WE 32 - B. 2 FISSO	2068	60	60	50	31	M 6 ÷ M 20 (*M30)
WE 40 - B. 1 FISSO	2080	40	72	33	19	M 3 ÷ M 12 (*M16)
WE 40 - B. 2 FISSO	2081	60	72	50	31	M 6 ÷ M 20 (*M30)

* Bussole con grani
Adapters with screws

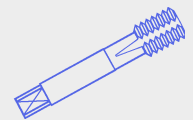


**Bussole a Maschiare da pag. 172
a pag. 175 del Catalogo Generale**
Tap Adapters on General Catalogue
from page 172 to page 175

**DIN
1835 B**

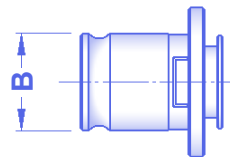
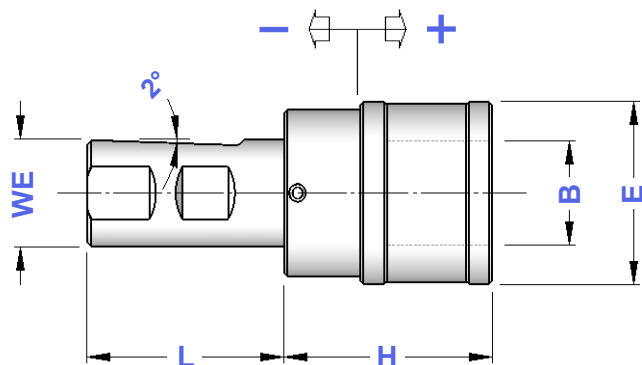
**MASCHIATORI CON ATTACCO WELDON
DOPPIA COMPENSAZIONE**

WELDON SHANK TAP HOLDERS - DOUBLE COMPENSATION



TIPO	Art.	H	L	E	B	COMPENSAZIONE	
WE 20 - B. 1	3176	41	50	38	19	- 9 + 9	M 3 ÷ M 12 (*M16)
WE 25 - B. 1	3963	41	56	38	19	- 9 + 9	M 3 ÷ M 12 (*M16)
WE 25 - B. 2	3964	63	56	53	31	-15 + 15	M 6 ÷ M 20 (*M30)
WE 32 - B. 1	3853	41	60	38	19	- 9 + 9	M 3 ÷ M 12 (*M16)
WE 32 - B. 2	3854	63	60	53	31	-15 + 15	M 6 ÷ M 20 (*M30)
WE 32 - B. 3	3598	120	60	79	48	-24 + 24	M14 ÷ M 33 (*M48)
WE 40 - B. 1	3855	41	72	38	19	- 9 + 9	M 3 ÷ M 12 (*M16)
WE 40 - B. 2	3856	63	72	55	31	-15 + 15	M 6 ÷ M 20 (*M30)
WE 40 - B. 3	3857	98	72	79	48	-24 + 24	M14 ÷ M 33 (*M48)

* Bussole con grani
Adapters with screws

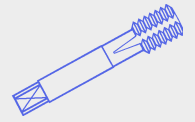


**Bussole a Maschiare da pag. 172
a pag. 175 del Catalogo Generale**
Tap Adapters on General Catalogue
from page 172 to page 175

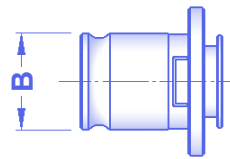
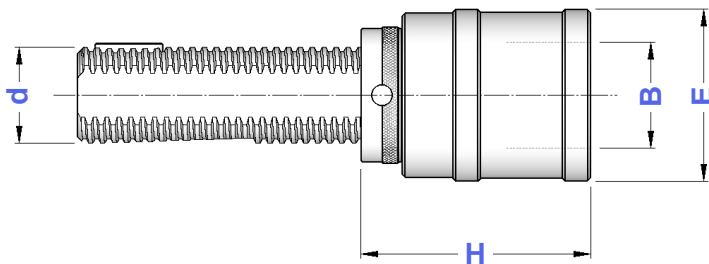
I maschiatori sono fornibili anche con la sola compensazione a trazione (SFILAMENTO)
Tap holders are also available with traction compensation only (TENSION ONLY)

**DIN
6327****MASCHIATORI ATTACCO TRAPEZIO A CAMBIO RAPIDO
SENZA COMPENSAZIONE**

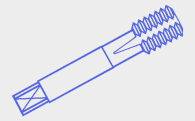
QUICK CHANGE TAP HOLDERS WITHOUT COMPENSATION



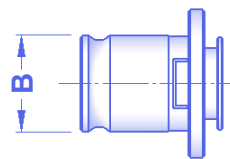
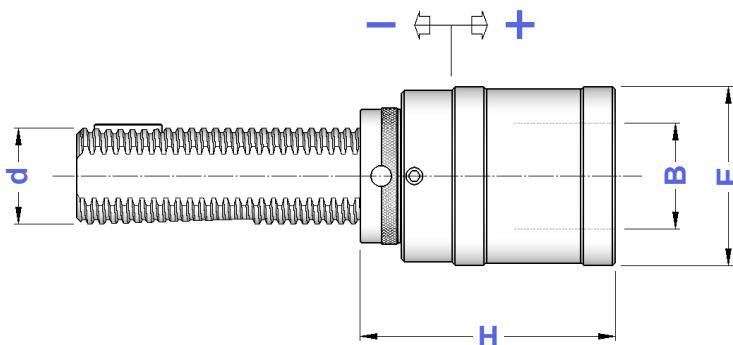
TIPO	Art.	d	H	E	B	
TR 16 - B.0 FISSO	5198	16	45	26	13	M 1 ÷ M 10
TR 16 - B.1 FISSO	5199	16	49	36	19	M 3 ÷ M 12 (*M16)
TR 20 - B.1 FISSO	5211	20	49	36	19	M 3 ÷ M 12 (*M16)
TR 20 - B.2 FISSO	5212	20	66	53	31	M 6 ÷ M 20 (*M30)
TR 28 - B.1 FISSO	5213	28	49	36	19	M 3 ÷ M 12 (*M16)
TR 28 - B.2 FISSO	5214	28	66	53	31	M 6 ÷ M 20 (*M30)
TR 36 - B.1 FISSO	5215	36	49	36	19	M 3 ÷ M 12 (*M16)
TR 36 - B.2 FISSO	5216	36	68	53	31	M 6 ÷ M 20 (*M30)

* Bussole con grani
Adapters with screws**Bussole a Maschiare
da pag. 172 a pag. 175
del Catalogo Generale**Tap Adapters
on General Catalogue
from page 172 to page 175**DIN
6327****MASCHIATORI ATTACCO TRAPEZIO A CAMBIO RAPIDO
DOPPIA COMPENSAZIONE**

DOUBLE COMPENSATION QUICK CHANGE TAP HOLDERS



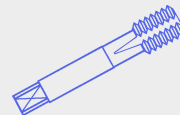
TIPO	Art.	d	H	E	B	COMPENSAZIONE	
TR 16 - B.0	3811	16	49	26	13	- 6,5 + 6,5	M 1 ÷ M 10
TR 16 - B.1	3564	16	51	36	19	- 7,5 + 7,5	M 3 ÷ M 12 (*M16)
TR 20 - B.0	3156	20	49	26	13	- 6,5 + 6,5	M 1 ÷ M 10
TR 20 - B.1	3565	20	51	36	19	- 7,5 + 7,5	M 3 ÷ M 12 (*M16)
TR 20 - B.2	3926	20	75	53	31	-12,5 +12,5	M 6 ÷ M 20 (*M30)
TR 28 - B.1	3566	28	51	36	19	- 7,5 + 7,5	M 3 ÷ M 12 (*M16)
TR 28 - B.2	3567	28	76	53	31	-12,5 +12,5	M 6 ÷ M 20 (*M30)
TR 28 - B.3	3220	28	108	78	48	-20,0 +20,0	M14 ÷ M 33 (*M48)
TR 36 - B.1	3568	36	53	36	19	- 7,5 + 7,5	M 3 ÷ M 12 (*M16)
TR 36 - B.2	3569	36	78	53	31	-12,5 +12,5	M 6 ÷ M 20 (*M30)
TR 36 - B.3	3570	36	110	78	48	-20,0 +20,0	M14 ÷ M 33 (*M48)
TR 48 - B.3	3571	48	114	78	48	20,0 +20,0	M14 ÷ M 33 (*M48)

* Bussole con grani
Adapters with screws**Bussole a Maschiare
da pag. 172 a pag. 175
del Catalogo Generale**Tap Adapters
on General Catalogue
from page 172 to page 175**I maschiatori sono fornibili anche con la sola compensazione a trazione (SFILAMENTO)**
Tap holders are also available with traction compensation only (TENSION ONLY)

DIN 228-A

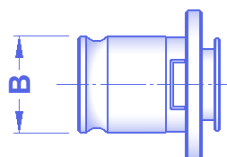
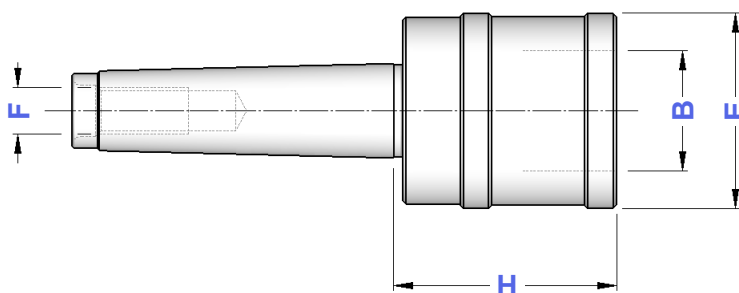
MASCHIATORI CAMBIO RAPIDO A CM CON FILETTO SENZA COMPENSAZIONE

QUICK CHANGE TAP HOLDERS WITH THREAD WITHOUT COMPENSATION



TIPO	Art.	H	E	B	F	
CM 2 A FISSO - B. 1	4696	44	36	19	M10	M 3 ÷ M 12 (*M16)
CM 2 A FISSO - B. 2	4697	61	53	31	M10	M 6 ÷ M 20 (*M30)
CM 3 A FISSO - B. 1	4698	44	36	19	M12	M 3 ÷ M 12 (*M16)
CM 3 A FISSO - B. 2	4699	61	53	31	M12	M 6 ÷ M 20 (*M30)

* Bussole con grani
Adapters with screws



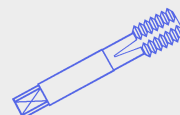
Bussole a Maschiare
da pag. 172 a pag. 175
del Catalogo Generale

Tap Adapters
on General Catalogue
from page 172 to page 175

DIN 228-B

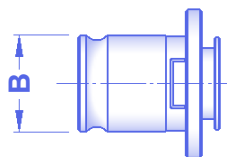
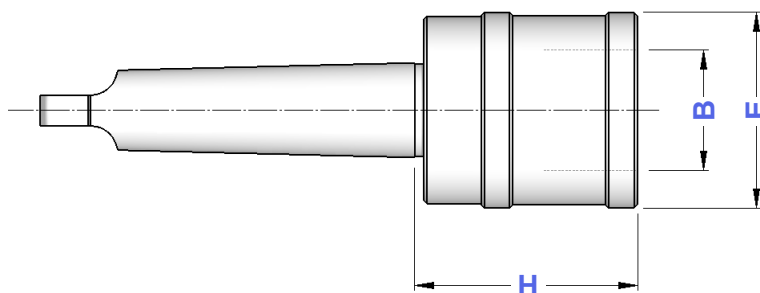
MASCHIATORI CAMBIO RAPIDO A CM CON TENONE SENZA COMPENSAZIONE

QUICK CHANGE TAP HOLDERS WITH TONQUE WITHOUT COMPENSATION



TIPO	Art.	H	E	B	
CM 1 FISSO - B. 0	4279	39	26	13	M 1 ÷ M 10
CM 2 FISSO - B. 0	4282	40	26	13	M 1 ÷ M 10
CM 2 FISSO - B. 1	4283	45	36	19	M 3 ÷ M 12 (*M16)
CM 2 FISSO - B. 2	4027	61	50	31	M 6 ÷ M 20 (*M30)
CM 3 FISSO - B. 1	4284	45	36	19	M 3 ÷ M 12 (*M16)
CM 3 FISSO - B. 2	4285	61	50	31	M 6 ÷ M 20 (*M30)
CM 4 FISSO - B. 2	4340	61	50	31	M 6 ÷ M 20 (*M30)

* Bussole con grani
Adapters with screws

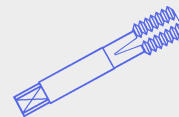


Bussole a Maschiare
da pag. 172 a pag. 175
del Catalogo Generale

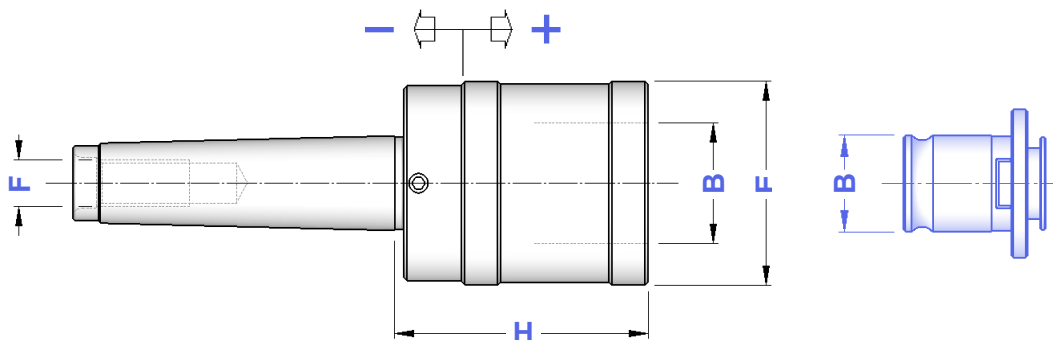
Tap Adapters
on General Catalogue
from page 172 to page 175

**DIN
228-A****MASCHIATORI CAMBIO RAPIDO A CM CON FILETTO
DOPPIA COMPENSAZIONE**

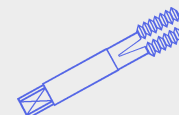
DOUBLE COMPENSATION QUICK CHANGE TAP HOLDERS WITH THREAD



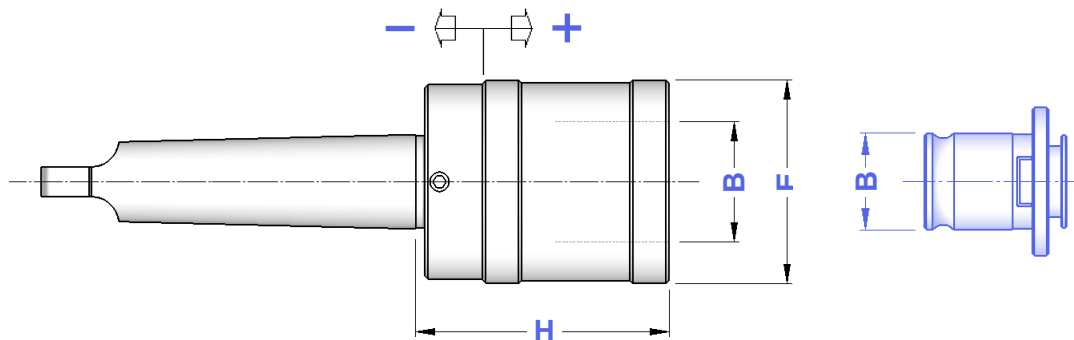
TIPO	Art.	H	E	B	F	COMPENSAZIONE	
CM 2 A - B. 0	4287	44	26	13	M10	- 6,5 + 6,5	M 1 ÷ M 10
CM 2 A - B. 1	4286	46	36	19	M10	- 7,5 + 7,5	M 3 ÷ M 12 (*M16)
CM 3 A - B. 1	4288	46	36	19	M12	- 7,5 + 7,5	M 3 ÷ M 12 (*M16)
CM 3 A - B. 2	4289	70	53	31	M12	- 12,5 + 12,5	M 6 ÷ M 20 (*M30)
CM 4 A - B. 2	4290	71	53	31	M16	- 12,5 + 12,5	M 6 ÷ M 20 (*M30)
CM 4 A - B. 3	4291	104	78	48	M16	- 20,0 + 20,0	M14 ÷ M 33 (*M48)
CM 5 A - B. 3	4426	104	78	48	M20	- 20,0 + 20,0	M14 ÷ M 33 (*M48)

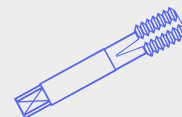
* Bussole con grani
Adapters with screws**Bussole a Maschiare
da pag. 172 a pag. 175
del Catalogo Generale**Tap Adapters
on General Catalogue
from page 172 to page 175I maschiatori sono fornibili anche con la sola compensazione a trazione (SFILAMENTO)
Tap holders are also available with traction compensation only (TENSION ONLY)**DIN
228-B****MASCHIATORI CAMBIO RAPIDO A CM CON TENONE
DOPPIA COMPENSAZIONE**

DOUBLE COMPENSATION QUICK CHANGE TAP HOLDERS WITH TONQUE

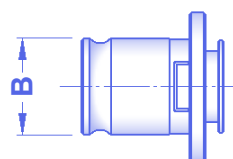
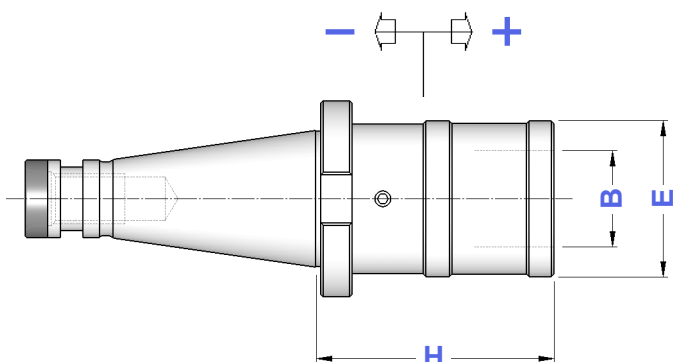
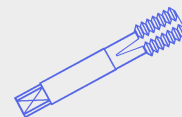


TIPO	Art.	H	E	B	COMPENSAZIONE	
CM 2 - B.0	4278	44	26	13	- 6,5 + 6,5	M 1 ÷ M 10
CM 2 - B.1	3846	46	36	19	- 7,5 + 7,5	M 3 ÷ M 12 (*M16)
CM 3 - B.1	3847	46	36	19	- 7,5 + 7,5	M 3 ÷ M 12 (*M16)
CM 3 - B.2	3848	69	53	31	- 12,5 + 12,5	M 6 ÷ M 20 (*M30)
CM 4 - B.2	3849	70	53	31	- 12,5 + 12,5	M 6 ÷ M 20 (*M30)
CM 4 - B.3	3850	104	78	48	- 20,0 + 20,0	M14 ÷ M 33 (*M48)
CM 5 - B.3	4427	104	78	48	- 20,0 + 20,0	M14 ÷ M 33 (*M48)

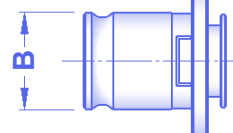
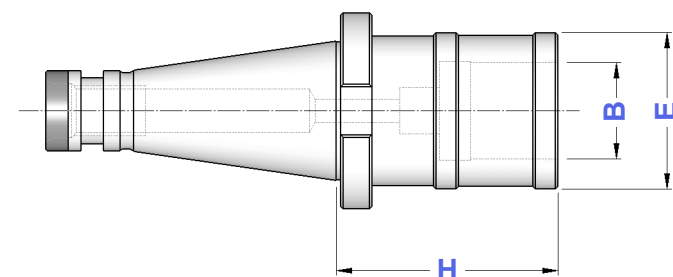
* Bussole con grani
Adapters with screws**Bussole a Maschiare
da pag. 172 a pag. 175
del Catalogo Generale**Tap Adapters
on General Catalogue
from page 172 to page 175I maschiatori sono fornibili anche con la sola compensazione a trazione (SFILAMENTO)
Tap holders are also available with traction compensation only (TENSION ONLY)

**DIN
2080****MASCHIATORI A CAMBIO RAPIDO CON
DOPPIA COMPENSAZIONE**
DOUBLE COMPENSATION QUICK CHANGE TAP HOLDERS

TIPO	Art.	H	E	B	COMPENSAZIONE	
ISO 30 - B. 1	3536	58	36	19	- 7,5 + 7,5	M 3 ÷ M 12 (*M16)
ISO 30 - B. 2	3537	85	53	31	- 15,0 + 15,0	M 6 ÷ M 20 (*M30)
ISO 40 - B. 1	3538	53	38	19	- 7,5 + 7,5	M 3 ÷ M 12 (*M16)
ISO 40 - B. 2	3539	77	55	31	- 15,0 + 15,0	M 6 ÷ M 20 (*M30)
ISO 40 - B. 3	3540	142	79	48	- 20,0 + 20,0	M 14 ÷ M 33 (*M48)
ISO 50 - B. 1	4199	57	38	19	- 9,0 + 9,0	M 3 ÷ M 12 (*M16)
ISO 50 - B. 2	3541	79	55	31	- 15,0 + 15,0	M 6 ÷ M 20 (*M30)
ISO 50 - B. 3	3542	125	79	48	- 20,0 + 20,0	M 14 ÷ M 33 (*M48)

* Bussole con grani
Adapters with screws**Bussole a Maschiare**
da pag. 172 a pag. 175
del Catalogo GeneraleTap Adapters
on General Catalogue
from page 172 to page 175**DIN
2080****MASCHIATORI A CAMBIO RAPIDO
SENZA COMPENSAZIONE**
QUICK CHANGE TAP HOLDERS WITHOUT COMPENSATION

TIPO	Art.	H	E	B	
ISO 30 - B. 1 FISSO	4941	59	33	19	M 3 ÷ M 12 (*M16)
ISO 30 - B. 2 FISSO	4942	84	50	31	M 6 ÷ M 20 (*M30)
ISO 40 - B. 1 FISSO	4943	52	33	19	M 3 ÷ M 12 (*M16)
ISO 40 - B. 2 FISSO	4944	74	50	31	M 6 ÷ M 20 (*M30)
ISO 50 - B. 1 FISSO	5108	55	33	19	M 3 ÷ M 12 (*M16)
ISO 50 - B. 2 FISSO	5109	78	50	31	M 6 ÷ M 20 (*M30)

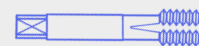
* Bussole con grani
Adapters with screws**Bussole a Maschiare**
da pag. 172 a pag. 175
del Catalogo GeneraleTap Adapters
on General Catalogue
from page 172 to page 175I maschiatori sono fornibili anche con la sola compensazione a trazione (SFILAMENTO)
Tap holders are also available with traction compensation only (TENSION ONLY)

DIN 69871

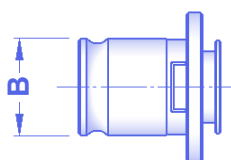
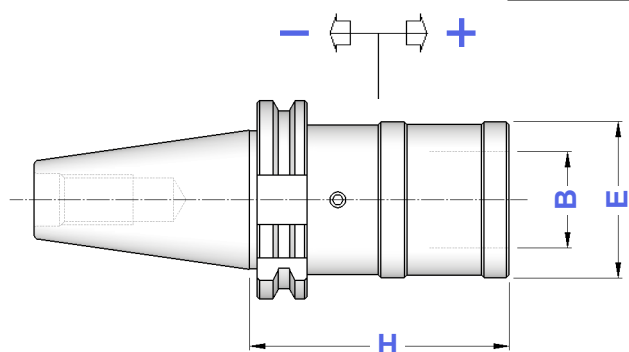
**MASCHIATORI A CAMBIO RAPIDO CON
DOPPIA COMPENSAZIONE**
DOUBLE COMPENSATION QUICK CHANGE TAP HOLDERS

FORMA A**FORMA
A**

TIPO	Art.	H	E	B	COMPENSAZIONE	
TC 30 - B.1	2995	74	38	19	- 7,5 + 7,5	M 3 ÷ M 12 (*M16)
TC 30 - B.2	2996	98	55	31	- 12,5 + 12,5	M 6 ÷ M 20 (*M30)
TC 40 - B.1	3377	60	38	19	- 7,5 + 7,5	M 3 ÷ M 12 (*M16)
TC 40 - B.2	3378	98	55	31	- 12,5 + 12,5	M 6 ÷ M 20 (*M30)
TC 40 - B.3	3379	138	79	48	- 20,0 + 20,0	M14 ÷ M 33 (*M48)
TC 45 - B.1	3380	60	38	19	- 7,5 + 7,5	M 3 ÷ M 12 (*M16)
TC 45 - B.2	3381	84	55	31	- 12,5 + 12,5	M 6 ÷ M 20 (*M30)
TC 50 - B.1	4151	60	38	19	- 7,5 + 7,5	M 3 ÷ M 12 (*M16)
TC 50 - B.2	3383	83	55	31	- 12,5 + 12,5	M 6 ÷ M 20 (*M30)
TC 50 - B.3	3384	133	79	48	- 20,0 + 20,0	M14 ÷ M 33 (*M48)



* Bussole con grani
Adapters with screws



**Bussole a Maschiare da pag. 172
a pag. 175 del Catalogo Generale**
Tap Adapters on General Catalogue
from page 172 to page 175

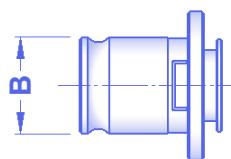
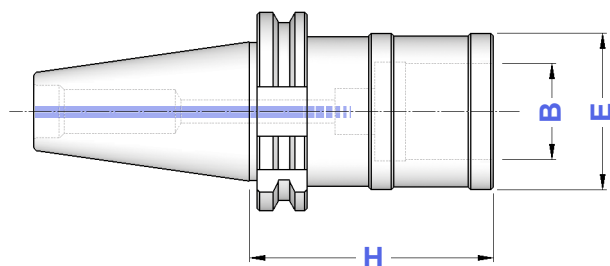
DIN 69871

**MASCHIATORI A CAMBIO RAPIDO
SENZA COMPENSAZIONE**
QUICK CHANGE TAP HOLDERS WITHOUT COMPENSATION

FORMA A (AD)**FORMA
A**

TIPO	Art.	H	E	B	
TC 30 - B.1 FISSO	4946	72	33	19	M 3 ÷ M 12 (*M16)
TC 30 - B.2 FISSO	4947	91	50	31	M 6 ÷ M 20 (*M30)
TC 40 - B.1 FISSO	4948	59	33	19	M 3 ÷ M 12 (*M16)
TC 40 - B.2 FISSO	4949	86	50	31	M 6 ÷ M 20 (*M30)
TC 40 - B.3 FISSO	4991	122	72	48	M14 ÷ M 33 (*M48)
TC 50 - B.1 FISSO	3062	75	33	19	M 3 ÷ M 12 (*M16)
TC 50 - B.2 FISSO	4950	98	50	31	M 6 ÷ M 20 (*M30)
TC 50 - B.3 FISSO	4992	122	72	48	M14 ÷ M 33 (*M48)

* Bussole con grani
Adapters with screws



**Bussole a Maschiare da pag. 172
a pag. 175 del Catalogo Generale**
Tap Adapters on General Catalogue
from page 172 to page 175

I maschiatori sono fornibili anche con la sola compensazione a trazione (SFILAMENTO)
Tap holders are also available with traction compensation only (TENSION ONLY)

BT

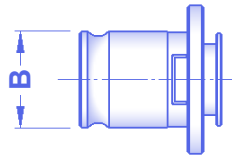
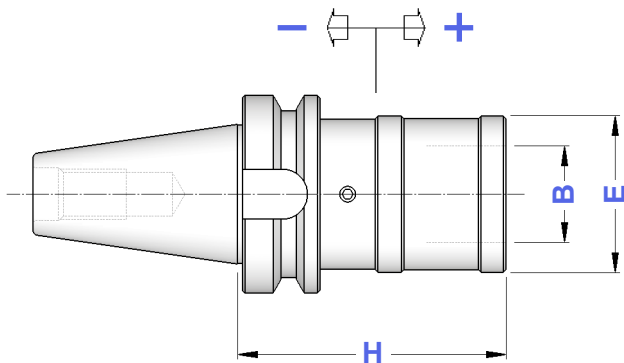
**MASCHIATORI A CAMBIO RAPIDO CON
DOPPIA COMPENSAZIONE**
DOUBLE COMPENSATION QUICK CHANGE TAP HOLDERS

FORMA A**FORMA
A**

TIPO	Art.	H	E	B	COMPENSAZIONE	
BT 30 - B.1	2863	63	38	19	- 7,5 + 7,5	M 3 ÷ M 12 (*M16)
BT 30 - B.2	2865	107	55	31	- 12,5 + 12,5	M 6 ÷ M 20 (*M30)
BT 40 - B.1	3524	67	38	19	- 7,5 + 7,5	M 3 ÷ M 12 (*M16)
BT 40 - B.2	3525	93	55	31	- 12,5 + 12,5	M 6 ÷ M 20 (*M30)
BT 40 - B.3	3526	164	79	48	- 20,0 + 20,0	M 14 ÷ M 33 (*M48)
BT 50 - B.1	3028	80	38	19	- 7,5 + 7,5	M 3 ÷ M 12 (*M16)
BT 50 - B.2	3530	102	55	31	- 12,5 + 12,5	M 6 ÷ M 20 (*M30)
BT 50 - B.3	3531	133	79	48	- 20,0 + 20,0	M 14 ÷ M 33 (*M48)



* Bussole con grani
Adapters with screws



**Bussole a Maschiare
da pag. 172 a pag. 175
del Catalogo Generale**

Tap Adapters
on General Catalogue
from page 172 to page 175

BT

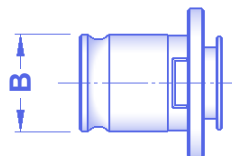
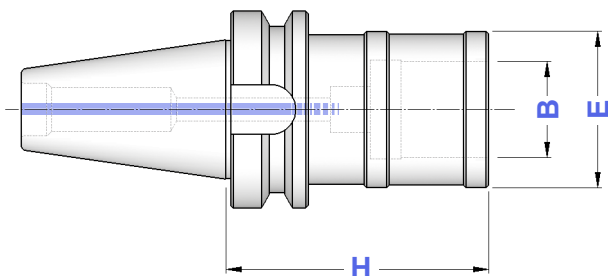
**MASCHIATORI A CAMBIO RAPIDO
SENZA COMPENSAZIONE**
QUICK CHANGE TAP HOLDERS WITHOUT COMPENSATION

FORMA A (AD)**FORMA
A**

TIPO	Art.	H	E	B	
BT 40 - B.1 FISSO	4951	67	33	19	M 3 ÷ M 12 (*M16)
BT 40 - B.2 FISSO	4952	90	50	31	M 6 ÷ M 20 (*M30)
BT 40 - B.3 FISSO	5711	117	72	48	M 14 ÷ M 33 (*M48)
BT 50 - B.1 FISSO	2999	78	33	19	M 3 ÷ M 12 (*M16)
BT 50 - B.2 FISSO	4953	101	50	31	M 6 ÷ M 20 (*M30)
BT 50 - B.3 FISSO	5712	125	72	48	M 14 ÷ M 33 (*M48)



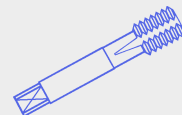
* Bussole con grani
Adapters with screws



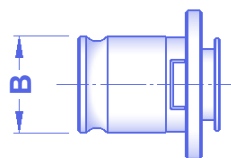
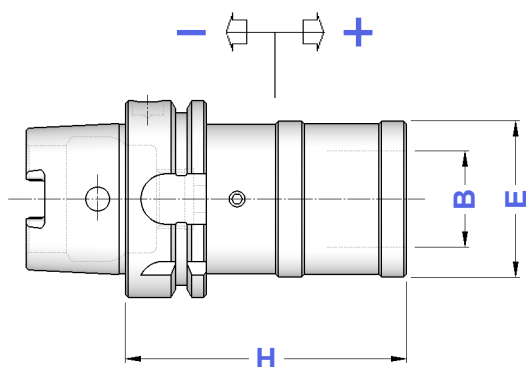
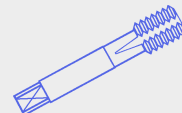
**Bussole a Maschiare
da pag. 172 a pag. 175
del Catalogo Generale**

Tap Adapters
on General Catalogue
from page 172 to page 175

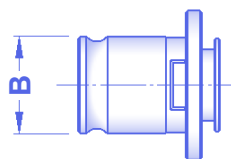
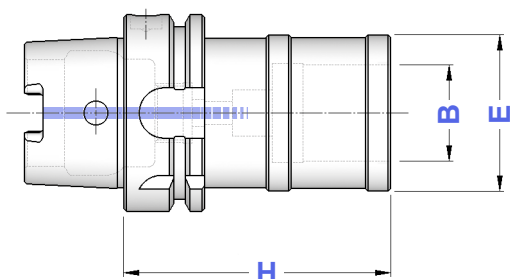
I maschiatori sono fornibili anche con la sola compensazione a trazione (SFILAMENTO)
Tap holders are also available with traction compensation only (TENSION ONLY)

**HSK
A + C****MASCHIATORI A CAMBIO RAPIDO CON
DOPPIA COMPENSAZIONE**
DOUBLE COMPENSATION QUICK CHANGE TAP HOLDERS

TIPO	Art.	H	E	B	COMPENSAZIONE	
HSK 40 A - B. 1	6450	80	36	19	- 7,5 + 7,5	M 3 ÷ M 12 (*M16)
HSK 40 A - B. 2	6451	100	53	31	- 10,0 + 10,0	M 6 ÷ M 20 (*M30)
HSK 50 A - B. 1	6452	80	36	19	- 7,5 + 7,5	M 3 ÷ M 12 (*M16)
HSK 50 A - B. 2	6453	130	53	31	- 10,0 + 10,0	M 6 ÷ M 20 (*M30)
HSK 63 A - B. 1	6454	80	36	19	- 7,5 + 7,5	M 3 ÷ M 12 (*M16)
HSK 63 A - B. 2	6455	130	53	31	- 10,0 + 10,0	M 6 ÷ M 20 (*M30)
HSK 63 A - B. 3	6456	165	78	48	- 17,5 + 17,5	M14 ÷ M 33 (*M48)
HSK 100 A - B. 1	6457	80	36	19	- 7,5 + 7,5	M 3 ÷ M 12 (*M16)
HSK 100 A - B. 2	6458	110	53	31	- 10,0 + 10,0	M 6 ÷ M 20 (*M30)
HSK 100 A - B. 3	6459	160	78	48	- 17,5 + 17,5	M14 ÷ M 33 (*M48)

* Bussole con grani
Adapters with screws**Bussole a Maschiare da pag. 172
a pag. 175 del Catalogo Generale**Tap Adapters on General Catalogue
from page 172 to page 175**HSK
A + C****MASCHIATORI A CAMBIO RAPIDO
SENZA COMPENSAZIONE**
QUICK CHANGE TAP HOLDERS WITHOUT COMPENSATION

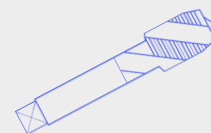
TIPO	Art.	H	E	B	
HSK 40 A - B. 1 FISSO	6470	55	33	19	M 3 ÷ M 12 (*M16)
HSK 40 A - B. 2 FISSO	6471	90	50	31	M 6 ÷ M 20 (*M30)
HSK 50 A - B. 1 FISSO	6472	60	33	19	M 3 ÷ M 12 (*M16)
HSK 50 A - B. 2 FISSO	6473	100	50	31	M 6 ÷ M 20 (*M30)
HSK 63 A - B. 1 FISSO	6474	60	33	19	M 3 ÷ M 12 (*M16)
HSK 63 A - B. 2 FISSO	6475	90	50	31	M 6 ÷ M 20 (*M30)
HSK 63 A - B. 3 FISSO	6476	130	72	48	M14 ÷ M 33 (*M48)
HSK 100 A - B. 1 FISSO	6477	70	33	19	M 3 ÷ M 12 (*M16)
HSK 100 A - B. 2 FISSO	6478	90	50	31	M 6 ÷ M 20 (*M30)
HSK 100 A - B. 3 FISSO	6479	115	72	48	M14 ÷ M 33 (*M48)

* Bussole con grani
Adapters with screws**Bussole a Maschiare da pag. 172
a pag. 175 del Catalogo Generale**Tap Adapters on General Catalogue
from page 172 to page 175

VDI DIN 69880

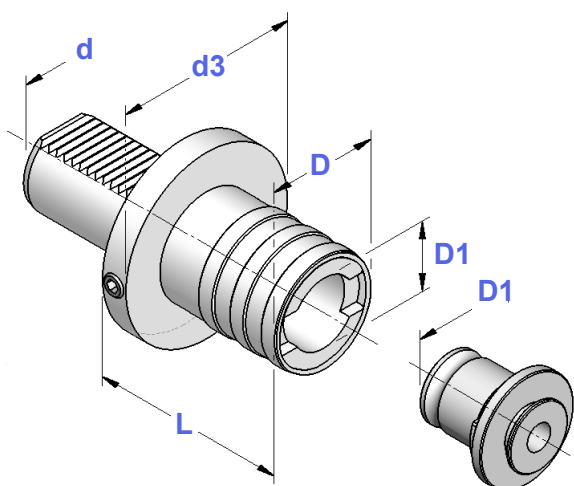
MASCHIATORI A CAMBIO RAPIDO CON DOPPIA COMPENSAZIONE

DOUBLE COMPENSATION QUICK CHANGE TAP HOLDERS



TIPO	Art.	d	d3	L	D	D1	COMPENSAZIONE	
VDI 20 - B.1	5760	20	50	55	38	19	- 9 + 9	M 3 ÷ M 12 (*M16)
VDI 20 - B.2	5761	20	50	77	55	31	-15 + 15	M 6 ÷ M 20 (*M30)
VDI 30 - B.1	5780	30	68	55	38	19	- 9 + 9	M 3 ÷ M 12 (*M16)
VDI 30 - B.2	5781	30	68	77	55	31	-15 + 15	M 6 ÷ M 20 (*M30)
VDI 40 - B.1	5782	40	83	55	38	19	- 9 + 9	M 3 ÷ M 12 (*M16)
VDI 40 - B.2	5783	40	83	77	55	31	-15 + 15	M 6 ÷ M 20 (*M30)
VDI 40 - B.3	5784	40	83	120	79	48	-24 + 24	M14 ÷ M 33 (*M48)
VDI 50 - B.2	5793	50	98	77	55	31	-15 + 15	M 6 ÷ M 20 (*M30)
VDI 50 - B.3	5794	50	98	108	79	48	-24 + 24	M14 ÷ M 33 (*M48)

* Bussole con grani
Adapters with screws



Bussole a Maschiare da pag. 172
a pag. 175 del Catalogo Generale
Tap Adapters on General Catalogue
from page 172 to page 175

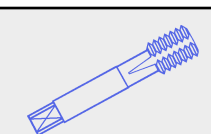
Gait 15

Catalogo Generale pag. 261 on General Catalogue

DIN 238

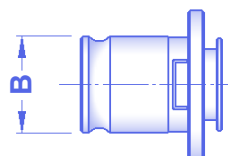
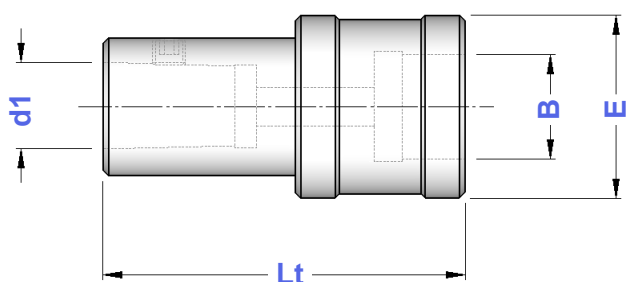
MASCHIATORI CON ATTACCO DIN 238 SENZA COMPENSAZIONE

DIN 238 SHANK TAP HOLDERS - WITHOUT COMPENSATION



TIPO	Art.	Lt	d1	E	B	
"B12" - B.0 FISSO	0244	55	12,06	26	13	M 1 ÷ M 10
"B12" - B.1 FISSO	0320	59	12,06	33	19	M 3 ÷ M 12 (*M16)
"B16" - B.1 FISSO	0340	65	15,73	33	19	M 3 ÷ M 12 (*M16)
"B16" - B.2 FISSO	0071	84	15,73	50	31	M 6 ÷ M 20 (*M30)
"B18" - B.1 FISSO	0384	73	17,78	33	19	M 3 ÷ M 12 (*M16)
"B18" - B.2 FISSO	0072	92	17,78	50	31	M 6 ÷ M 20 (*M30)

* Bussole con grani
Adapters with screws



Bussole a Maschiare da pag. 172
a pag. 175 del Catalogo Generale
Tap Adapters on General Catalogue
from page 172 to page 175

Gait 15

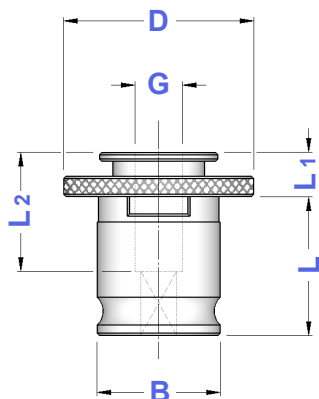
Catalogo Generale pag. 68 on General Catalogue

BUSSOLE A CAMBIO RAPIDO SENZA FRIZIONE

QUICK CHANGE TAP ADAPTERS WITHOUT CLUTCH

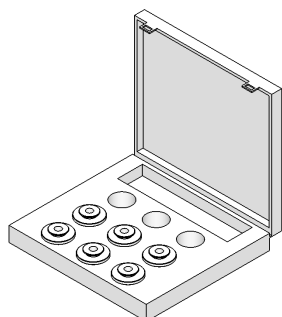
B.

TIPO	Art.	FILETTO	G	B	D	L	L1	L2
B.0	4077	M 2 ÷ M 10	∅ 2,5 ÷ ∅ 8	13	22	19,5	7	15
B.1	3390	M 2 ÷ M 12	∅ 2,5 ÷ ∅ 11	19	30	21,5	7	17
B.2	3391	M 5 ÷ M 20	∅ 6,0 ÷ ∅ 18	31	46	35,0	11	30
B.3	3392	M 14 ÷ M 36	∅ 11,0 ÷ ∅ 28	48	68	55,5	14	44



CASSETTE DI CORREDO CON BUSSOLE SENZA FRIZIONE

EQUIPMENT BOXES FOR TAP HOLDERS WITH TAP ADAPTERS WITHOUT CLUTCH



TIPO	Art.		
Corredo B.1	7532	3695	6 Bussole Art.3390: ∅ 3,5 (M3) - ∅ 4,5 (M 4) - ∅ 6 (M 6) ∅ 8 (M8) - ∅ 9 (M12) - ∅ 10 (M10)
Corredo B.2	7533	3695	7 Bussole Art.3391: ∅ 8 (M 8) - ∅ 9 (M12) - ∅ 10 (M10) ∅ 11 (M14) - ∅ 12 (M16) - ∅ 14 (M18) ∅ 16 (M20)

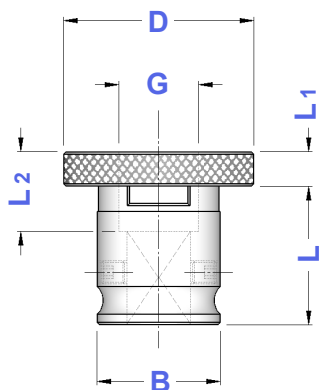
A richiesta è possibile completare il corredo aggiungendo il maschiatore di Vostro interesse.
On request is possible to complete the equipment adding the Tap Holder you are interested on.

BUSSOLE SENZA FRIZIONE CON GRANI

TAP ADAPTERS WITH SCREWS - WITHOUT CLUTCH

B.GR

TIPO	Art.	FILETTO	G	B	D	L	L1	L2
B.1 - GR	3390 GR	M 16	∅ 12	19	30	21,5	6,0	14,0
B.2 - GR	3391 GR	M 27 ÷ M 30	∅ 20 ÷ ∅ 22	31	46	35,0	8,5	22,5
B.3 - GR	3392 GR	M 39 ÷ M 48	∅ 32 ÷ ∅ 36	48	68	55,5	9,0	37,0

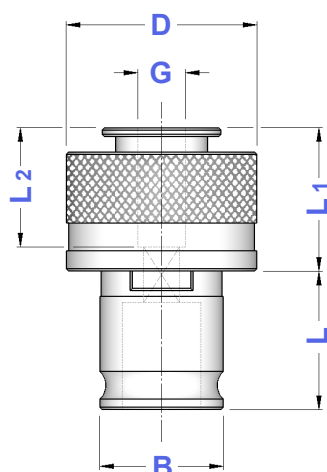


Nelle bussole tipo GR il fissaggio del maschio non avviene mediante sfere ma grazie a 2 grani situati sul diametro di guida.
On GR tap adapters, the tap is locked by 2 screws on guide diameter and not by balls.

BUSSOLE A CAMBIO RAPIDO CON FRIZIONE

QUICK CHANGE TAP ADAPTERS WITH CLUTCH

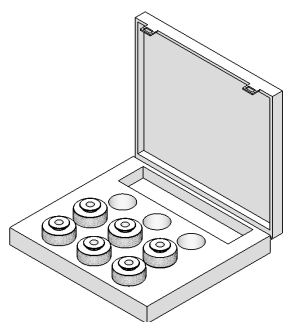
BF.



TIPO	Art.	FILETTO	G	B	D	L	L1	L2
BF.0	4078	M 2 ÷ M 10	∅2,5 ÷ ∅ 8	13	23	19,5	21	15
BF.1	3387	M 2 ÷ M 12	∅2,5 ÷ ∅ 11	19	32	21,5	25	17
BF.2	3388	M 5 ÷ M 20	∅6,0 ÷ ∅ 18	31	50	35,0	34	30
BF.3	3389	M14 ÷ M 36	∅11,0 ÷ ∅ 28	48	72	55,5	45	44

CASSETTE DI CORREDO CON BUSSOLE CON FRIZIONE

EQUIPMENT BOXES FOR TAP HOLDERS WITH TAP ADAPTERS WITH CLUTCH



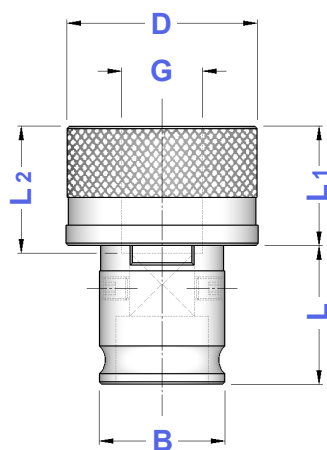
TIPO	Art.		
Corredo BF.1	7534	3695	6 Bussole Art.3387: ∅ 3,5 (M 3) - ∅ 4,5 (M 4) - ∅ 6 (M 6) ∅ 8 (M 8) - ∅ 9 (M12) - ∅ 10 (M10)
Corredo BF.2	7535	3695	7 Bussole Art.3388: ∅ 8 (M 8) - ∅ 9 (M12) - ∅ 10 (M10) ∅ 11 (M14) - ∅ 12 (M16) - ∅ 14 (M18) ∅ 16 (M20)

A richiesta è possibile completare il corredo aggiungendo il maschiatore di Vostro interesse.
On request is possible to complete the equipment adding the Tap Holder you are interested on.

BUSSOLE CON FRIZIONE CON GRANI

TAP ADAPTERS WITH SCREWS - WITH CLUTCH

BF.GR

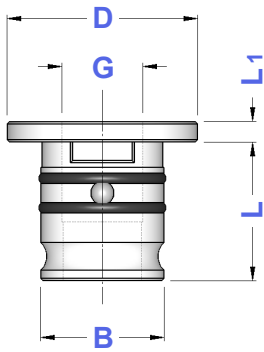


TIPO	Art.	FILETTO	G	B	D	L	L1	L2
BF.1 - GR	3387 GR	M 16	∅ 12	19	32	21,5	23	25,5
BF.2 - GR	3388 GR	M 27 ÷ M 30	∅ 20 ÷ ∅ 22	31	50	35,0	29	31,0
BF.3 - GR	3389 GR	M 39 ÷ M 48	∅ 32 ÷ ∅ 36	48	72	55,5	39	39,0

Nelle bussole tipo GR il fissaggio del maschio non avviene mediante sfere ma grazie a 2 grani situati sul diametro di guida.
On GR tap adapters, the tap is locked by 2 screws on guide diameter and not by balls.

RIDUZIONI

RIDUZIONI DA BUSSOLA A BUSSOLA REDUCTIONS FROM ADAPTER TO ADAPTER



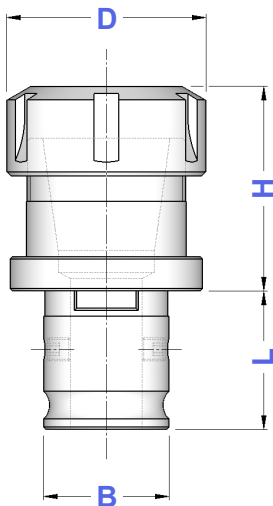
TIPO	Art.	B	G	D	L	L1
B.1/B.0	0202	19	13	30	21,5	4
B.2/B.1	0246	31	19	48	35,0	5
B.3/B.2	0399	48	31	70	55,5	6

PORTAPINZE

RIDUZIONI DA BUSSOLA A PINZA ER REDUCTIONS FROM ADAPTER TO ER COLLET



TIPO	Art.	B	D	H	L	CAPACITA'			
B.1 - ER 16	3385	19	32	29	21,5	∅ 1 ÷ 10	4993	3698	0364
B.2 - ER 25	3386	31	42	38	35,0	∅ 1 ÷ 16	4995	3669	0996
B.2 - ER 32	3160	31	50	62	35,0	∅ 2 ÷ 20	4996	3670	0988

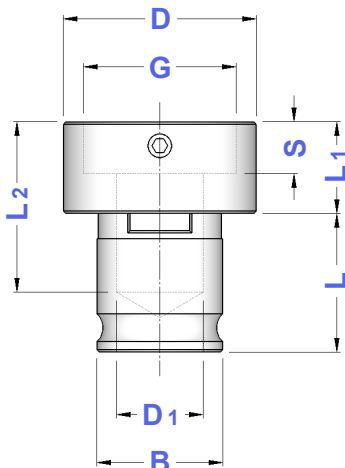


Il bloccaggio del quadro del maschio avviene mediante i grani posti sul diametro di guida.

Tap square is locked by the screws on guide diameter.

PORTA FILIERE

BUSSOLE PORTA FILIERE THREADING DIE ADAPTERS



TIPO	Art.	B	L	L1	G	S	D	D1	L2
B.1 - F / 16 x 5	0251	19	21,5	9	16	4,8	25	12,5	23
B.1 - F / 20 x 5				9	20	4,8	30	12,5	23
B.1 - F / 20 x 7				11	20	6,5	30	12,5	25
B.1 - F / 25 x 9				14	25	8,5	35	12,5	28
B.1 - F / 30 x 11				16	30	10,0	40	12,5	30
B.1 - F / 38 x 10				15	38	9,0	48	14,2	29
B.1 - F / 38 x 14				19	38	13,0	48	14,2	33
B.2 - F / 20 x 5	0252	31	35,0	22	20	4,8	30	15,0	57
B.2 - F / 20 x 7				22	20	6,5	30	15,0	57
B.2 - F / 25 x 9				22	25	8,5	35	15,0	57
B.2 - F / 30 x 11				22	30	10,0	40	22,0	57
B.2 - F / 38 x 10				22	38	9,0	48	22,0	57
B.2 - F / 38 x 14				25	38	13,0	48	22,0	60
B.2 - F / 45 x 14				29	45	13,0	57	22,0	64
B.2 - F / 45 x 18				29	45	17,0	57	22,0	64

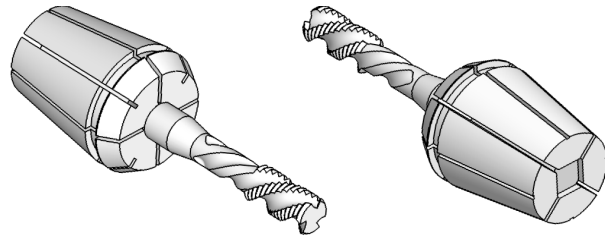
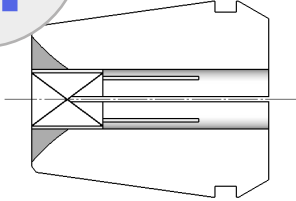
DIMENSIONAMENTO GAMBI PER MASCHI METRICI
TAP SHANKS METRIC SIZE DIMENTIONS

GAMBO ∅ x □	NORMALE DIN 352	RINFORZATO DIN 371	NORMALE DIN 376	NORMALE ISO	RINFORZATO ISO	TIPO BUSSOLA
2,50 x 2,10	M 1,0	M 1,0	M 3,5			0 - 1
	M 1,4	M 1,4				0 - 1
	M 1,6	M 1,6				0 - 1
	M 1,8	M 1,8				0 - 1
2,80 x 2,10	M 2,0	M 2,0	M 4,0			0 - 1
	M 2,2	M 2,2				0 - 1
	M 2,5	M 2,5				0 - 1
3,15 x 2,50				M 4,0	M 3,0	0 - 1
3,50 x 2,70	M 3,0	M 3,0	M 5,0			0 - 1
3,55 x 2,80				M 4,5	M 3,5	0 - 1
4,00 x 3,15	M 3,5	M 3,5		M 5,0	M 4,0	0 - 1
4,50 x 3,40	M 4,0	M 4,0	M 6,0			0 - 1
5,00 x 4,00					M 5,0	0 - 1
6,00 x 4,90	M 5,0	M 5,0				0 - 1 - 2
	M 6,0	M 6,0				0 - 1 - 2
	M 8,0		M 8,0			0 - 1 - 2
6,30 x 5,00				M 8,0	M 6,0	0 - 1 - 2
7,00 x 5,50	M 10,0		M 10,0			0 - 1 - 2
8,00 x 6,20		M 8,0		M 10,0	M 8,0	0 - 1 - 2
9,00 x 7,00	M 12,0		M 12,0	M 12,0		1 - 2
10,00 x 8,00		M 10,0			M 10,0	1 - 2
11,00 x 9,00	M 14,0		M 14,0			1 - 2 - 3
11,20 x 9,00				M 14,0		1 - 2 - 3
12,00 x 9,00	M 16,0		M 16,0			1 - 2 - 3
12,50 x 10,00				M 16,0		2 - 3
14,00 x 11,00	M 18,0		M 18,0			2 - 3
14,00 x 11,20				M 18,0		2 - 3
				M 20,0		2 - 3
16,00 x 12,00	M 20,0		M 20,0			2 - 3
16,00 x 12,50				M 22,0		2 - 3
18,00 x 14,00				M 24,0		2 - 3
18,00 x 14,50	M 22,0		M 22,0			2 - 3
	M 24,0		M 24,0			2 - 3
20,00 x 16,00	M 27,0		M 27,0	M 27,0		2 - 3
				M 30,0		2 - 3
22,00 x 18,00	M 30,0		M 30,0			2 - 3
25,00 x 20,00	M 33,0		M 33,0	M 36,0		3
28,00 x 22,00	M 36,0		M 36,0			3
32,00 x 24,00	M 39,0		M 39,0			3
	M 42,0		M 42,0			3
36,00 x 29,00	M 45,0		M 45,0			3
	M 48,0		M 48,0			3

**DIN
6499/A**

PINZE ER CON QUADRO PER MASCHIATURA
ER TAPPING COLLETS WITH SQUARE

**TIPO
MF**



Il quadro di trascinamento per il maschio è ricavato sul fondo della pinza.

Tap drag square got out on the bottom of the collet.

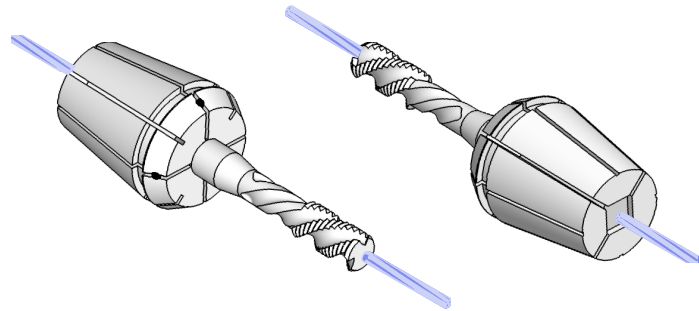
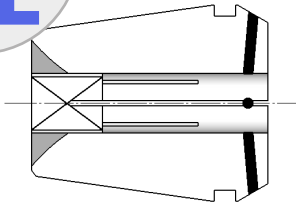
Gait 15

Catalogo Generale **pag. 18** on General Catalogue

**DIN
6499/A**

PINZE ER CON QUADRO PER MASCHIATURA A TENUTA STAGNA
WATERTIGHT ER TAPPING COLLETS WITH SQUARE

**TIPO
ML**



Con quadro e a tenuta stagna grazie agli inserti in neoprene.
Pressione di esercizio: max 40 Bar / 600 PSI

*With square and watertight due to neoprene insertions.
Working pressure: max 40 Bar / 600 PSI*

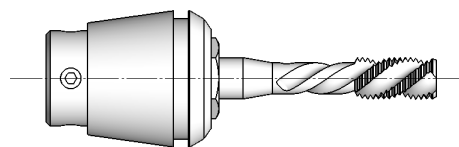
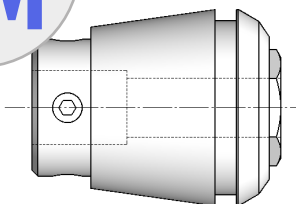
Gait 15

Catalogo Generale **pag. 19** on General Catalogue

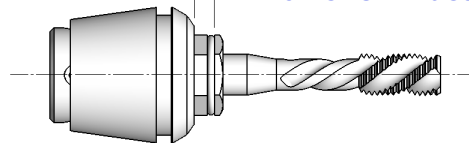
**DIN
6499**

PINZE ER - COMPENSATE A TRAZIONE
ER COLLETS - COMPENSATION WITH TRACTION

**TIPO
AM**



Trazione - Traction



Il maschio viene bloccato con i grani situati sulla parte mobile.

Tap clamped by the grain placed on the mobile part.

Gait 15

Catalogo Generale **pag. 17** on General Catalogue